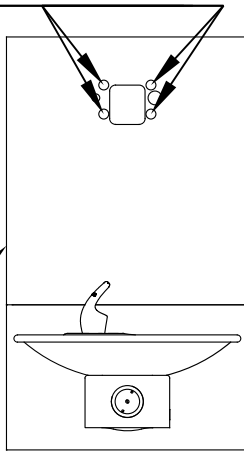


### STEP 1

PLACE BACKPLATE ON TOP OF INSTALLED DRINKING FOUNTAIN. MARK THE HOLE LOCATIONS ONTO THE WALL.

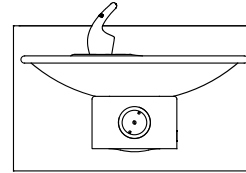
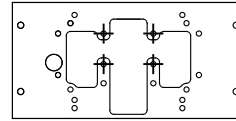
BP15 SHOWN

MARK THESE HOLE LOCATIONS



### STEP 2

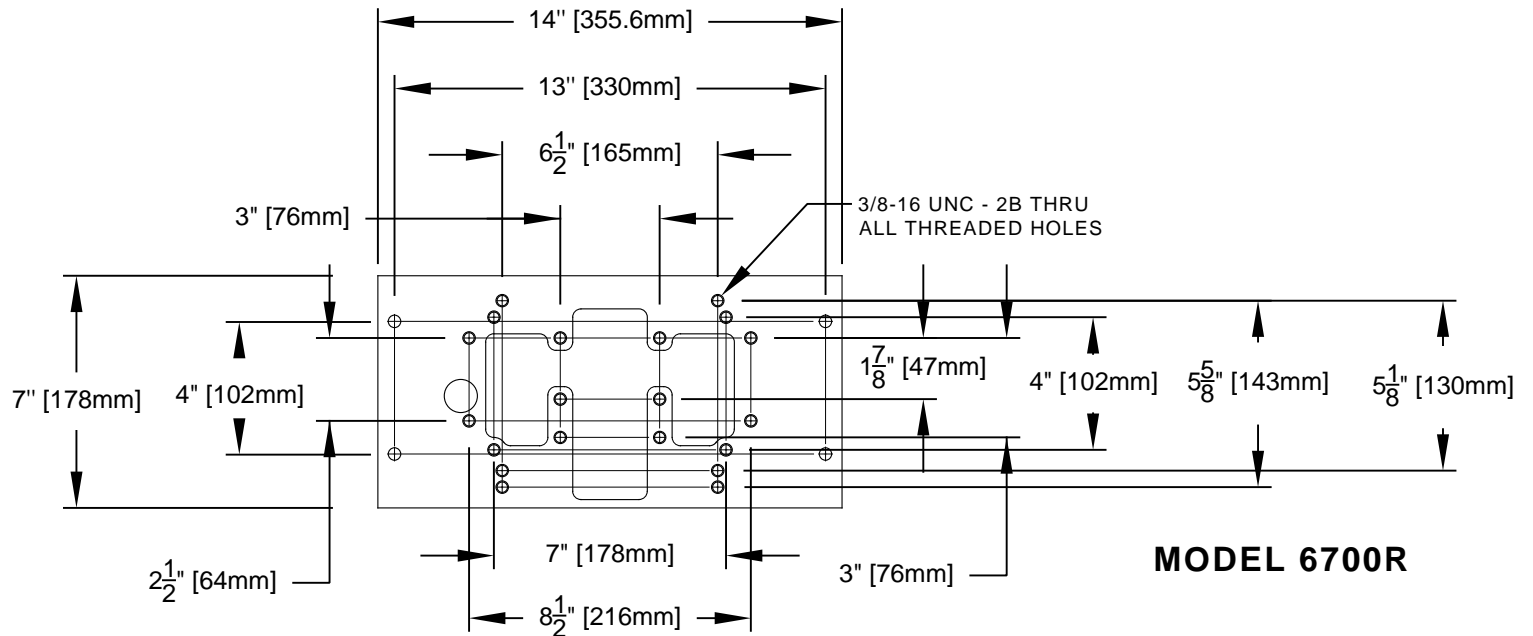
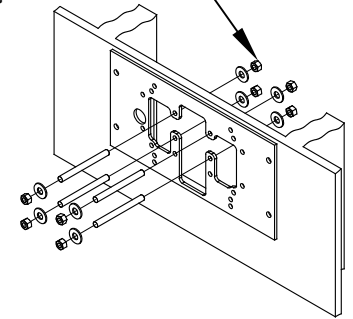
LINE UP THE 6700R MOUNTING PLATE OVER THE MARKED HOLES. ATTACHED THE PLATE TO THE WALL USING APPROPRIATE ANCHORS.



### STEP 3


INSTALL THE STUDS IN THE MOUNTING PLATE BY SECURING WITH NUTS AND WASHERS. RECESS FOR THE REAR NUTS MAY BE REQUIRED.

FULLY TIGHTEN NUTS TO SECURE STUDS IN PLACE.



### NOTES:

1. WHEN INSTALLING THIS UNIT, LOCAL, STATE OR FEDERAL CODES SHOULD BE ADHERED TO.
2. FOR CONCRETE/MASONRY WALLS, DO NOT INSTALL THE MOUNTING PLATE ON THE SAME SIDE OF WALL AS FOUNTAIN/BOTTLE FILLER. CALL TECHNICAL SUPPORT IF THERE ARE ANY QUESTIONS AS TO HOW TO OBTAIN A PROPER ANCHOR IN CONCRETE/MASONRY WALL. 1-800-766-5612

 <b>Haws®</b>		1455 KLEPPE LANE SPARKS, NEVADA 89431 (775) 359-4712 FAX (775) 359-7424 E-MAIL: HAWS@HAWS.CO.COM WEBSITE: WWW.HAWS.CO.COM	
		<b>MODEL(S)</b> <b>MODEL 6700R INSTALLATION</b>	
ECN NO. 5081	REVISED PER ECN: 5172	BY: MJ	PART NUMBER 0510000492.D
DRAWN: MJ	DATE: 06/27/16	CHK'D: FV	REVISION 2
APPROVED: FV	DATE: 02/27/17	SCALE: 1:1	DRAWING TYPE: INSTALLATION
		SIZE: A	SHEET 1 OF 1