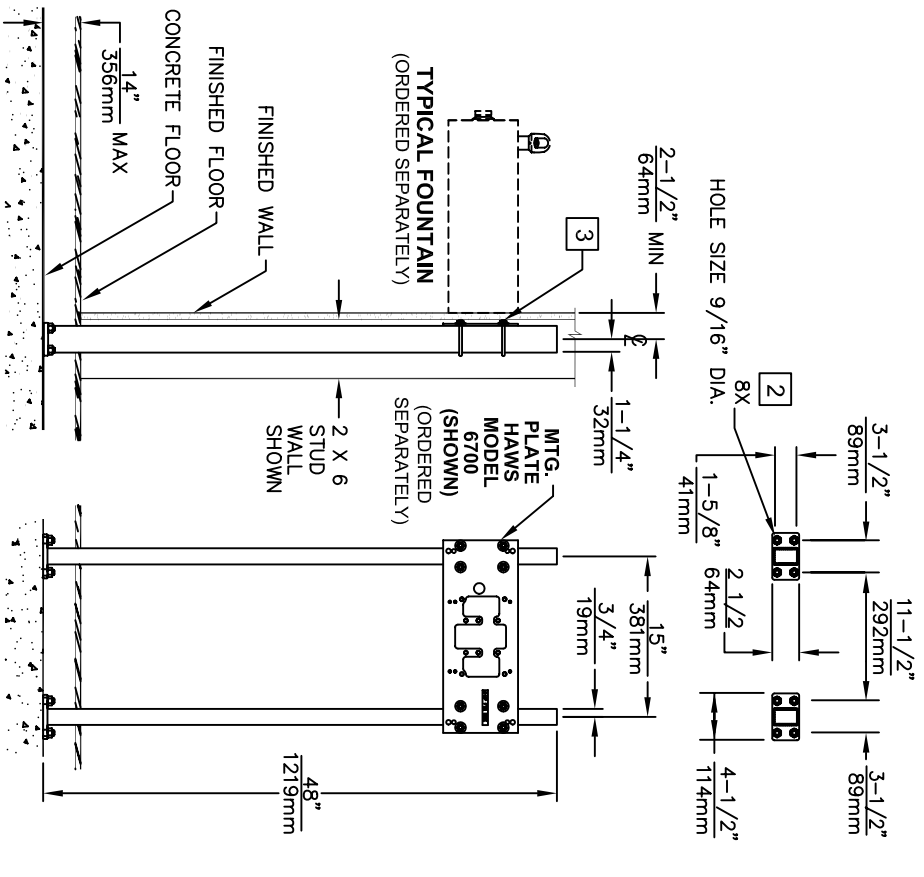
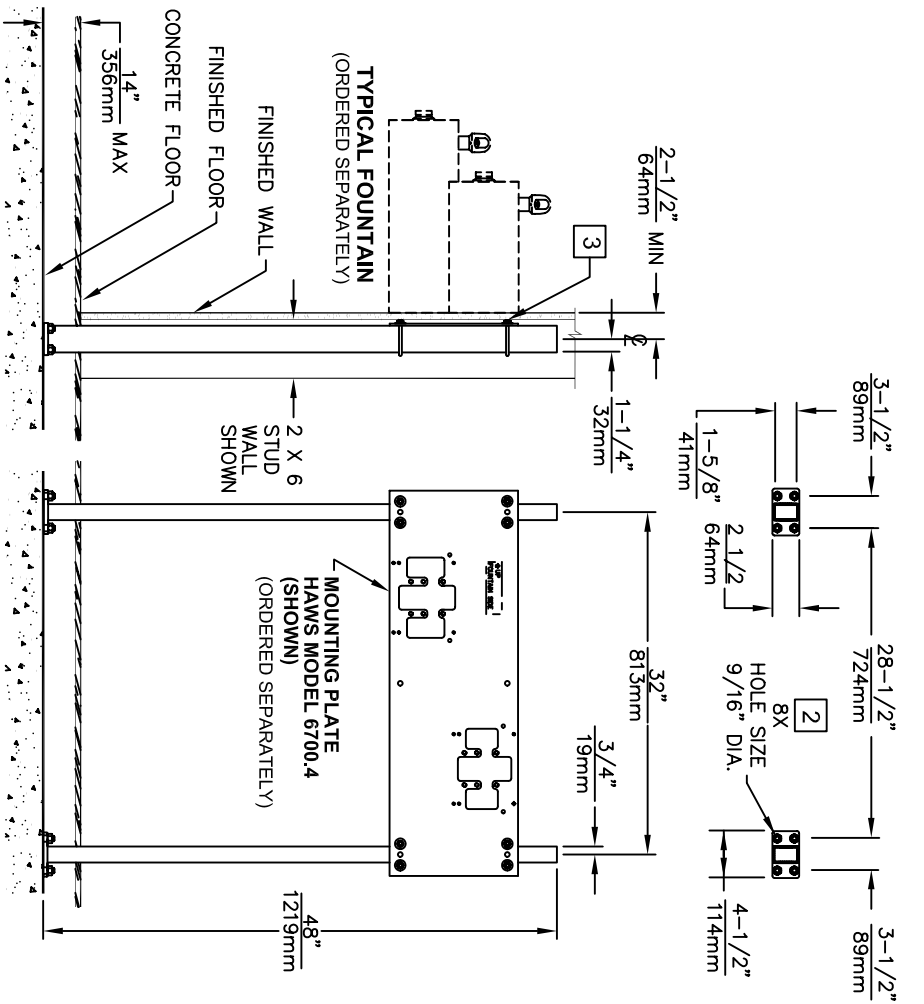


- NOTE:**
1. THE 6800 SUPPORT CARRIER CAN ALSO BE USED WITH MODELS 6705, 6710, 6715 AND 6717.
 2. RECOMMEND USING 1/2" UNC X 4" MIN. "L" ANCHORS (NOT SUPPLIED).
 3. WHEN PLACED IN A 2 X 4 STUD WALL, U-BOLTS MUST BE TRIMMED AFTER BACK PANEL HEIGHT IS ADJUSTED.

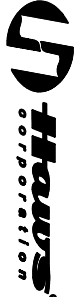


FOR MODELS: 1001, 1025 1047, 1075, 1105, 1107L, AND 1109



FOR MODELS: 1011, 1117L, 1119 AND 1119.14

THIS CHAIR CARRIER IS USED WITH SEVERAL DIFFERENT MODELS. SEE FIGURES ABOVE TO DETERMINE WHICH ROUGH-IN DIMENSIONS TO USE WITH YOUR MODEL. FOR FOUNTAIN ROUGH-IN HEIGHTS SEE THE INSTALLATION INSTRUCTIONS SUPPLIED WITH THE FOUNTAIN.



Haws Corporation

INFO FAX : 1-888-FAX-HAWS (1-888-329-4297)

1455 Kiappa Ln, Sparks NY 88431
 Phone: 775-359-4712 Fax: 775-359-7424
 Haws Ag Buehling 3 CH-3401 Burgdorf Switzerland
 Haws King Pte Ltd 74 Sungei Kodut Loop Singapore 729531
 e-TRUII Haws@hawsco.com Website: www.hawsco.com

REG. NO. 10/93	REG. NO. 10/93	MODEL(S): 6800
DATE 10/93	DATE 10/93	INFO FAX DOC # 26800
APPROVER	SCALE: 1/8"	DRAWING TYPE: INSTALLATION/FABRICK
DATE	SCALE: 1/8"	DRAWING TYPE: INSTALLATION/FABRICK
DATE	SCALE: 1/8"	DRAWING TYPE: INSTALLATION/FABRICK

PROJ. NO. 10406C00	DATE 10/93
REV. 1	DATE 10/93
REV. 1	DATE 10/93