

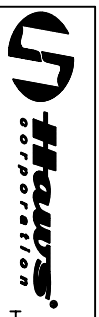
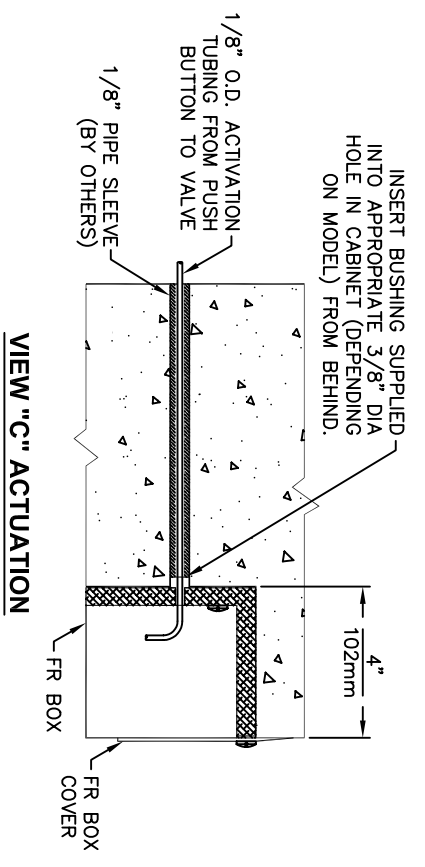
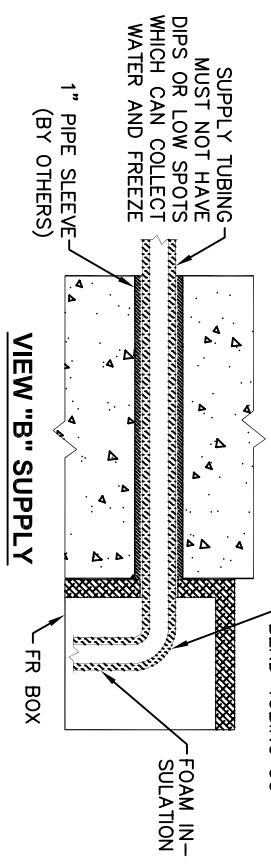
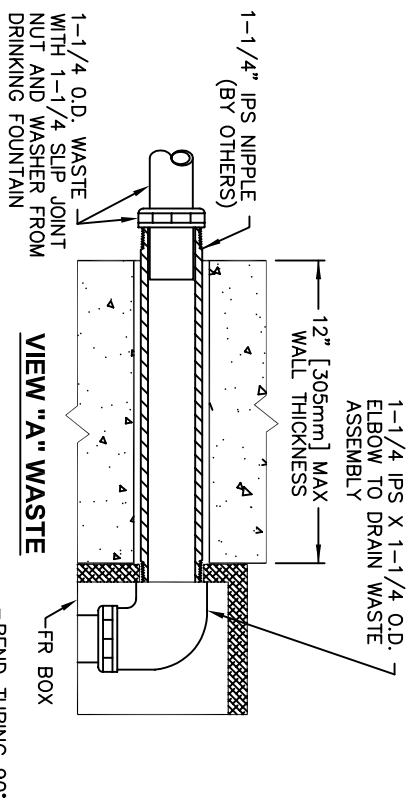
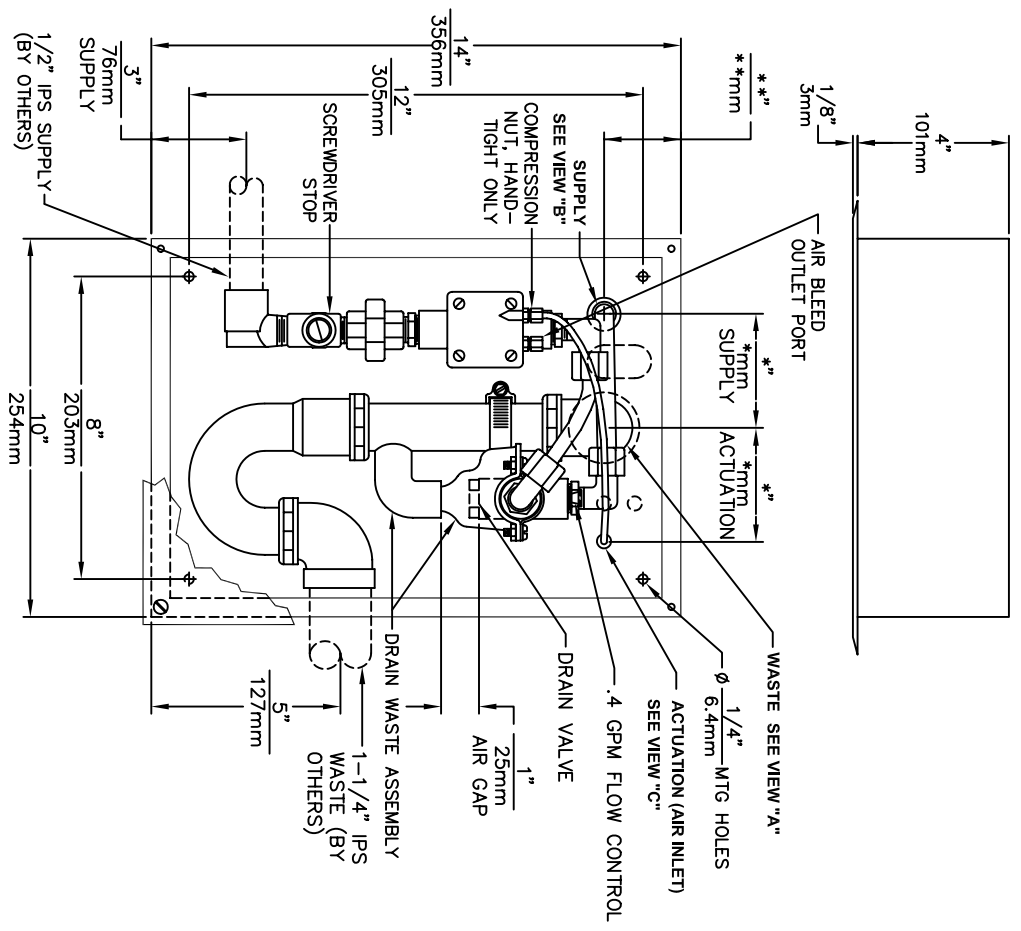
**NOTES:**

UNIT MAY BE RECESSED MOUNTED IN WALL AS SHOWN IN VIEW "C" OR SURFACE MOUNTED AS SHOWN IN VIEWS "A" AND "B".

\* FOR ALL MODELS OTHER THAN 1001FR THESE DIMENSIONS ARE 3" [76mm] SUPPLY & 3" [76mm] ACTUATION. FOR MODELS 1001FR THESE DIMENSIONS ARE 1-3/4" [44mm] SUPPLY AND 2" [51mm] ACTUATION.

\*\* FOR ALL MODELS OTHER THAN 1001FR THIS DIMENSION IS 2" [51mm] FOR 1001FR THIS DIMENSION IS 1-3/16" [30mm].

VALVE MUST BE INSTALLED IN SPACE THAT MAINTAINS A MINIMUM OF 50°F.



INFO FAX : 1-888-FAX-HAWS (1-888-329-4297)  
 1455 Kleppe Ln, Sparks NV, 89431  
 Phone: 775-359-4712 Fax: 775-359-7424  
 Haws Ag Bochiweg 3 CH-3401 Burgdorf Switzerland  
 Haws Mfg Pte Ltd 74 Sungei Kadut Loop Singapore 729531  
 e-mail: Haws@hawsco.com website: www.hawsco.com

EST. NO.	REVISION	DATE	BY	CHKD.	APPV.	MODEL(S)
09/92	01	09/92				6521FR
SCALE	DRAWING TYPE		INSTALLATION/BACK		SCALE	
1:5	1:5		1:5		1:5	
PART NUMBER	DRAWING NUMBER		REV.			
0007820.D	09306A00		11			