

WHEELER-REX PROFESSIONAL TOOLS

SOFT COPPER TUBING SHUT-OFF TOOLS



► Model 85/86 for 3/4"-1" & 1/2"-1" pipes



► Model 70 for 1-1/4"-2" pipes



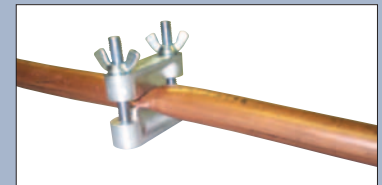
► Model 85/86 in Tool Box

WHEELER-REX Shut-Off Tools have proven to be invaluable both in the maintenance and installation of soft copper service lines and as "Emergency Valves" which eliminates needless time and money spent searching for inaccessible or non-existent shut-off cocks.

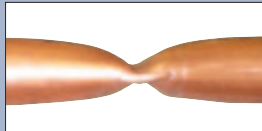
WHEELER-REX Shut-Off Tools are like "ever ready" valves: ready to shut-off, hold and restore the flow quickly and easily. And their modest cost makes them a toolbox must!!

Features:

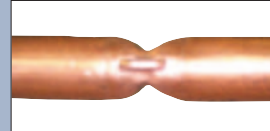
- Shuts-off, holds & restores flow
- Swing-out design - no die removal
- Corrosion resistant
- Compact & easy to use
- Does not overwork tube walls
- Complete with ratchet, socket, holding clamp and toolbox



Holding Clamp



Wheeler-Rex Shut-Off tools effectively compress soft copper tubing to shut off water flow.



Our unique reforming dies prevent flattened tube edges from overworking and cracking. The loss of head is no more than through a 90° elbow.

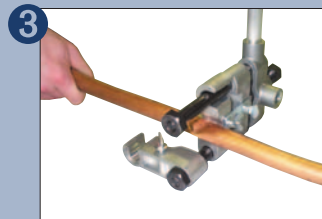
Operating Instructions



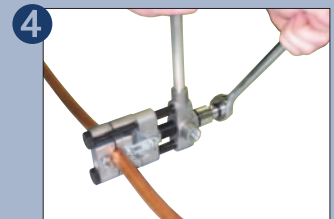
1 To shut off flow, place tool over tube, swing dies onto guide rods and latch. Tool handle can be repositioned for confined working spaces.



2 Use ratchet to compress Shut-Off dies. Needs only enough compression to stop flow. Watertight closure is maintained while the tool (or holding clamp) is affixed to the tube.



3 To restore flow, remove tool and rotate 90°. Using the bottom two dies, reattach tool so that the reforming dies are properly located around flattened tube edges.



4 Use ratchet to compress reforming dies. Die shape will prevent over-forming and fatiguing tube walls as flow is restored.



Wheeler Manufacturing, Division of Rex International U.S.A., Inc.

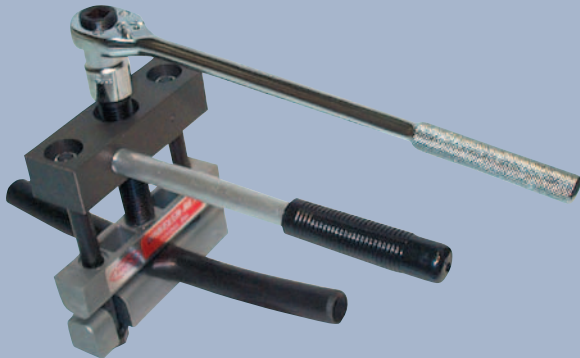
P.O. Box 688, 3744 Jefferson Road, Ashtabula, Ohio 44005

Phone: 440-998-2788 Fax: 440-992-2925 Toll-Free: 1-800-321-7950 www.wheelerrex.com

WHEELER-REX PROFESSIONAL TOOLS

PLASTIC PIPE SHUT-OFF TOOLS

“A TOOLBOX MUST FOR EVERYONE WHO SERVICES PLASTIC WATER AND GAS LINES”



Model 75 for 3/8" to 2" pipes



Model 77 for 3/8" to 2" pipes

PLASTIC WATER LINE

for 1/2" - 2" (12-50mm) Polyethylene or Polybutylene water pipe lines

Features:

- Swing-out construction for fast set-up
- Easily used in confined spaces
- Lightweight and compact
- Corrosion resistant finish

PLASTIC GAS LINE

for 1/2" - 2" (12-50mm) Polyethylene or Polybutylene gas pipe lines

Features:

- Adjustable cams for a variety of gas line sizes
- Swing-out construction for fast set-up
- Easily used in confined spaces
- Lightweight and compact
- Corrosion resistant finish

OPERATING INSTRUCTIONS FOR MODEL 77

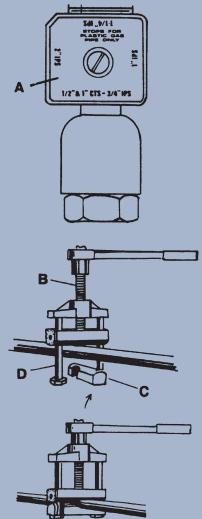
① Each end of the upper die is fitted with a closure stop cam (A). Rotate the cams to the size/type line to be shut-off. The cams restrict closure travel so as to limit compression cold flow.

DO NOT USE THIS SHUT-OFF TOOL ON METAL PIPE OR TUBING.

② Back off the compressor screw (B) to release the lower die (C) and engage the tool over the pipe as illustrated. Swing the lower die back over the guide rod (D) and seat it on the guide rod nuts.

③ Center the pipe between the guide rods and turn the compressor screw using the ratchet provided until flow has been shut-off. Wait 30 to 60 sec. and then tighten the compressor screw again. The unique flat compression faces result in positive shut-off with minimum cold flow.

Contact Wheeler-Rex for additional cautionary instructions before using these tools.



Wheeler Manufacturing, Division of Rex International U.S.A., Inc.
P.O. Box 688, 3744 Jefferson Road, Ashtabula, Ohio 44005

Phone: 440-998-2788 Fax: 440-992-2925 Toll-Free: 1-800-321-7950 www.wheelerrex.com