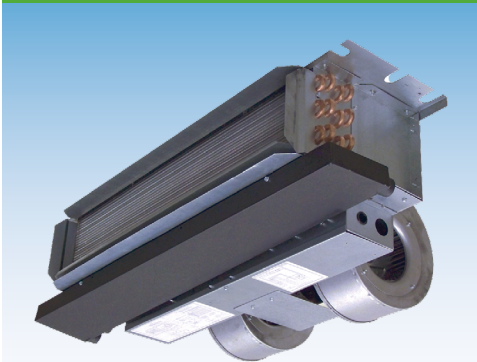


PES/T SERIES - AIR HANDLER

ELECTRIC CEILING MOUNT, COPPER COIL



Representative image only. Some models may vary in appearance.

LOW LEAKAGE CABINET

Sturdy, fully insulated galvanized steel cabinet with knockout for duct return. Less than 2% air leakage from cabinet when tested in accordance with ASHRAE standard 193. Unit must be installed according to Aspen installation instructions.

- **PES SERIES:** Uncased
- **PET SERIES:** Cased

DIRECT EXPANSION COIL

High-efficiency rifled copper tubes and enhanced aluminum fins provide maximum heat transfer. All coils are immersion tested at 500 psi, followed by nitrogen pressurization and factory sealing to ensure optimal system integrity and long-term reliability. Liquid-line Schrader allows pre-installation pressure assurance testing.

Available with either orifice or TXV metering device factory installed. Field-installable bolt-on TXVs is also available. Primary and secondary condensate drain. All drain connections are 3/4" NPT. Powder-painted metal drain pan. Access door allows for coil cleaning.

ELECTRIC HEAT KITS

Heat kits available in 3, 5, 6, 8, & 10 KW. Models with electric heat include sequencers and temperature limit switches for safe, efficient operation. Easily accessible controls for quick service.

WARRANTY One-year limited parts warranty.

OPTIONS Ask your local Aspen Sales Rep for customization options.

CUSTOMIZATION OPTIONS*

UNIVERSAL A2L REFRIGERANT TECHNOLOGY FOR R32 & R454B SYSTEMS

Aspen coils and air handlers are engineered with Universal A2L Refrigerant Technology, allowing field configurability for either R32 or R454B refrigerants. Each unit ships with a factory-installed A2L metering device that can be easily swapped at installation, and includes the option for a factory- or field-installed universal Refrigerant Detection System (RDS) compatible with both refrigerants.

APPLICATION VERSATILITY

Built-in mounting tabs for ceiling or fur-down mounting. Louvered ceiling access panel has separate frame that attaches to ceiling joists. Solid access panel available for use with end return installations. Compatible with most brands of air conditioners or heat pumps. Field convertible front and bottom return. Wall hanging bracket included standard.

- A2L refrigerants require a Refrigerant Detection System (RDS) for compliance. In accordance to UL 60335 Refrigerant Detection Systems are factory-installed on A2L refrigerant ready air handlers.
- ETL and AHRI listed for R22, R410A, R454B, and R32 refrigerants [A2L refrigerants certified with Refrigerant Detection System (RDS)].

240V CONSTANT TORQUE ECM MOTOR

Pre-programmed, multi-speed, 208V/240V ECM motors that ensure higher efficiency and increased energy savings by delivering constant torque during operation. Motors are pre-programmed with speeds and torques at the factory for optimal performance and reliability. Direct drive blowers circulate air quietly and efficiently. Rail mounted blowers provide easy removal for service and maintenance.

ELECTRONIC CONTROL BOARD

Electronic circuit board provides 30 secs ON/OFF blower time delay extracting more heat/cool from the coil.

PES-PET-SS-AH-020-A



In keeping with its commitment to continuous improvement, Aspen Manufacturing reserves the right to make changes without notice and incurring obligation. To stay up-to-date with this product and Aspen's trusted line of coils, air handlers, and more, go to our website. © 2025 Aspen Manufacturing. All Rights Reserved

Customer Service: info@aspenmfg.com Warranty Team: warranty@aspenmfg.com Phone: 281.441.6500 Toll Free: 800.423.9007 Fax: 281.441.6510

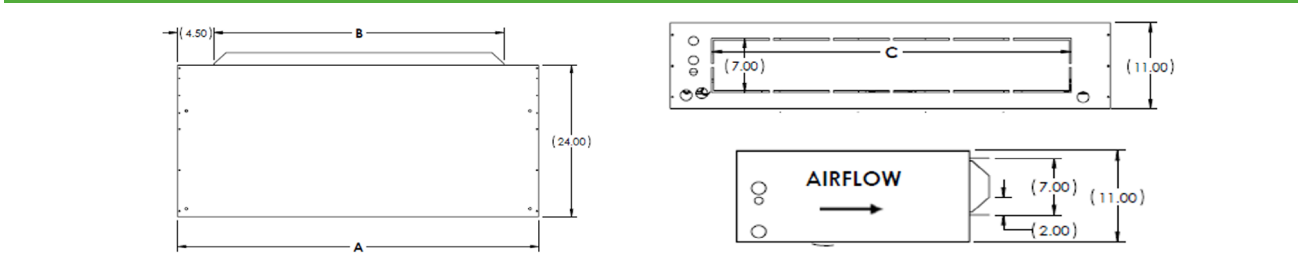
HEATING/COOLING PERFORMANCE & ELECTRICAL DATA											
MODEL	NOM. COOLING	ELECTRIC HEAT KIT	MIN. SPEED TAP	PERFORMANCE DATA				ELECTRICAL DATA			
				HEATING		TOT. AMPS		MIN. CIRCUIT AMP.		MAX. BREAKER OR FUSE SIZE	
	BTU			KW		A		MCA			
				208V	240V	208V	240V	208V	240V	208V	240V
PE(S/T) 23/27	18,000	HTS00	-	0.0	0.0	4.0	4.0	5.0	5.0	15A	15A
		HTS03	T1	2.3	3.0	14.8	16.5	18.5	20.6	20A	25A
		HTS05	T2	3.6	4.8	21.3	24.0	26.6	30.0	30A	30A
		HTS06	T3	4.5	6.0	25.6	29.0	32.0	36.3	35A	40A
		HTS08	T4	6.0	8.0	32.8	37.3	41.1	46.7	45A	50A
		HTS10	T5	7.2	9.6	38.6	44.0	48.3	55.0	50A	60A
PE(S/T) 26/28	24,000	HTS00	-	0.0	0.0	4.0	4.0	5.0	5.0	15A	15A
		HTS03	T1	2.3	3.0	14.8	16.5	18.5	20.6	20A	25A
		HTS05	T2	3.6	4.8	21.3	24.0	26.6	30.0	30A	30A
		HTS06	T3	4.5	6.0	25.6	29.0	32.0	36.3	35A	40A
		HTS08	T4	6.0	8.0	32.8	37.3	41.1	46.7	45A	50A
		HTS10	T5	7.2	9.6	38.6	44.0	48.3	55.0	50A	60A
PE(S/T) 29/33/35	30,000	HTS00	-	0.0	0.0	4.0	4.0	5.0	5.0	15A	15A
		HTS03	T1	2.3	3.0	14.8	16.5	18.5	20.6	20A	25A
		HTS05	T2	3.6	4.8	21.3	24.0	26.6	30.0	30A	30A
		HTS06	T3	4.5	6.0	25.6	29.0	32.0	36.3	35A	40A
		HTS08	T4	6.0	8.0	32.8	37.3	41.1	46.7	45A	50A
		HTS10	T5	7.2	9.6	38.6	44.0	48.3	55.0	50A	60A
PE(S/T) 34/38	36,000	HTS00	-	0.0	0.0	4.0	4.0	5.0	5.0	15A	15A
		HTS03	T1	2.3	3.0	14.8	16.5	18.5	20.6	20A	25A
		HTS05	T2	3.6	4.8	21.3	24.0	26.6	30.0	30A	30A
		HTS06	T3	4.5	6.0	25.6	29.0	32.0	36.3	35A	40A
		HTS08	T4	6.0	8.0	32.8	37.3	41.1	46.7	45A	50A
		HTS10	T5	7.2	9.6	38.6	44.0	48.3	55.0	50A	60A

PE(S/T) BLOWER DATA								
MODEL	SPEED TAP	240V ECM MOTOR		CFM VS. EXTERNAL STATIC (DRY COIL)				
		HP	FLA	0.1	0.2	0.3	0.4	0.5
PE(S/T) 23/26	T5	1/2	4.0	900	850	805	765	650
	T4	1/2	4.0	840	805	760	705	595
	T3	1/2	4.0	805	460	705	665	565
	T2	1/2	4.0	705	665	615	580	495
	T1	1/2	4.0	655	605	555	500	425
PE(S/T) 27	T5	1/2	4.0	975	925	875	835	710
	T4	1/2	4.0	915	865	815	780	660
	T3	1/2	4.0	865	825	780	730	620
	T2	1/2	4.0	805	760	695	655	560
	T1	1/2	4.0	730	675	615	565	480
PE(S/T) 28	T5	1/2	4.0	1180	1130	1070	1015	860
	T4	1/2	4.0	1115	1060	1015	950	810
	T3	1/2	4.0	1015	950	900	860	730
	T2	1/2	4.0	910	850	795	745	630
	T1	1/2	4.0	815	745	685	640	454
PE(S/T) 29/34	T5	1/2	4.0	1195	1140	1085	1050	890
	T4	1/2	4.0	1115	1060	1015	965	820
	T3	1/2	4.0	1000	950	895	850	725
	T2	1/2	4.0	920	860	805	745	630
	T1	1/2	4.0	815	760	700	640	545
PE(S/T) 33	T5	1/2	4.0	1220	1165	1115	1060	900
	T4	1/2	4.0	1140	1100	1060	1000	850
	T3	1/2	4.0	1010	965	910	860	730
	T2	1/2	4.0	885	860	775	735	625
	T1	1/2	4.0	815	765	705	665	565
PE(S/T) 35/38	T5	1/2	4.0	1305	1255	1195	1130	960
	T4	1/2	4.0	1230	1165	1115	1070	910
	T3	1/2	4.0	1130	1085	1040	1000	850
	T2	1/2	4.0	1045	980	935	900	765
	T1	1/2	4.0	935	885	810	775	650

ELECTRIC HEAT NOMENCLATURE			
HEAT KIT SERIES	POWER CONNECTION	CABINET SIZE & NOM. TON.	HEAT STRIP
H	T	S	10
ELECTRIC HEAT	T = TERMINAL BLOCK	S = 18-36	00 = 0 KW 06 = 6 KW 03 = 3 KW 08 = 8 KW 05 = 5 KW 10 = 10 KW

PE(S/T) AIR HANDLER CHASSIS NOMENCLATURE					
BRAND	VOLTAGE	CONFIGUR.	NOM. TON.	METERING DEVICE	OPTION CODE
P	E	S/T	MBTUH	4	-000
ASPEN PRO	240V ECM MOTOR CONSTANT TORQUE ELECTRIC AIR HANDLER	S = Uncased T = Cased	23 33 26 34 27 35 28 38 29	A1 REFRIGERANTS - R410A + R22	CUSTOM OPTIONS
				4 = R410A (TXV NON-BLEED AC/HP) X = R22 (TXV NON-BLEED AC/HP) G = R410A (FLOWRATOR) B = R22 (TXV 20% BLEED AC/HP) F = R22 (FLOWRATOR)	
				A2L REFRIGERANTS - R454B + R32	
				J = R454B (TXV NON-BLEED AC/HP) D = R32 (TXV NON-BLEED AC/HP) K = R454B (TXV 20% BLEED AC/HP) M = R32 (PISTON) N = R454B (PISTON) Z = R454B/R32 CONFIGURABLE (Shipped w/ R454B Piston)	

FIGURE 1 - PET SERIES

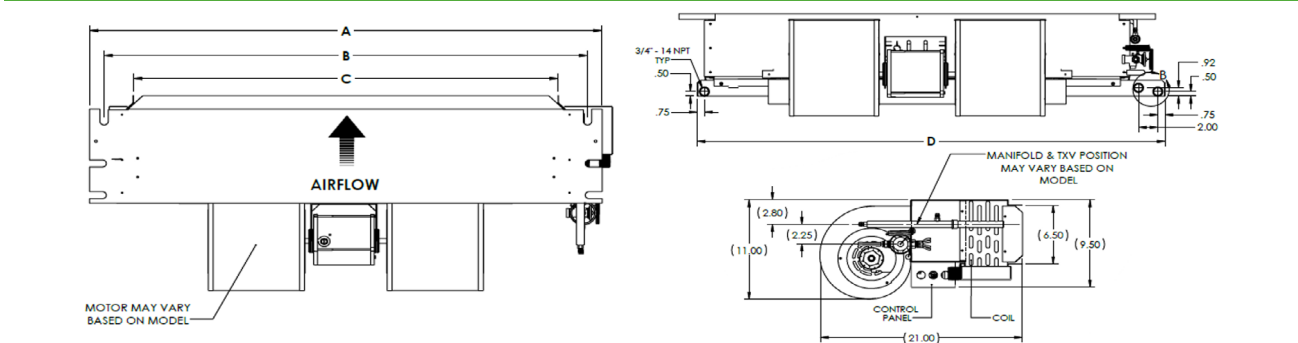


PET SERIES - CHASSIS DIMENSIONS (In.)[mm.] - FIGURE 1

UNIT MODEL	A	B	C	WEIGHT (LB)	SKID QTY.
PET23/26	40 [1016]	30 [762]	30 [762]	135	5
PET27	46 [1168]	36 [914]	36 [914]	145	
PET28/29/34	52 [1321]	42 [1067]	42 [1067]	155	
PET33/35/38	60 [1524]	48 [1219]	48 [1219]	175	

Copper stub out diameter: Suction: 3/4", Liquid: 3/8"; Knockout for ducted return (Ducted return requires remote filter grille (field supplied) and non-louvered panel)

FIGURE 2 - PES SERIES



PES SERIES - ENCLOSURE DIMENSIONS (In.) - FIGURE 2

UNIT MODEL	A	B	C	WEIGHT (LB)	SKID QTY.
PES 23/26	37-1/4	34-5/8	30	135	8
PES 27	43-1/4	40-5/8	36	145	5
PES 28/29/34	49-1/4	46-5/8	42	155	4
PES 33/35/38	56-1/4	53-5/8	48	175	5

Note: Copper stub out diameter: Suction: 3/4", Liquid: 3/8"

In keeping with its commitment to continuous improvement, Aspen Manufacturing reserves the right to make changes without notice and incurring obligation. To stay up-to-date with this product and Aspen's trusted line of coils, air handlers, and more, go to our website. © 2025 Aspen Manufacturing. All Rights Reserved.

ACCESS DOOR

VERSATILITY

Equipped with hidden frame feature. Fastens to the outside wall surface and does not have to perfectly match the hole opening. Frame screws are not visible after installation. Available in either solid (S) or Louvered (L) style.

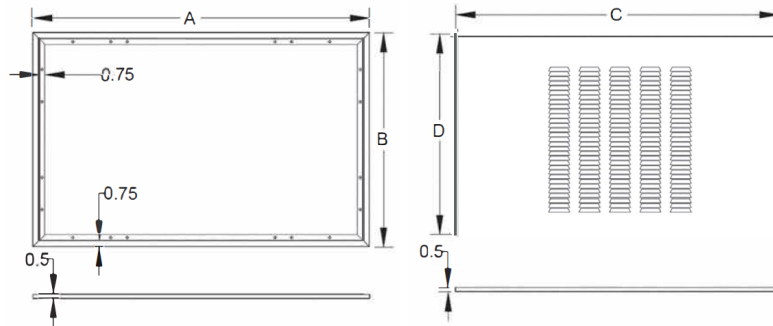
MATERIALS

Galvanized steel construction with smooth powder paint finish.

FILTER

20" x 20" x 1" field supplied.

FIGURE 3



ACCESS DOOR DIMENSIONS (In.) - FIGURE 3

PANEL MODEL	FOR USE WITH	A	B	C	D	FILTERS (QTY)
PE(S/T)23/26	GAD-1(S/L)	43-1/2	27-1/2	41-1/2	26	1
PE(S/T)27	GAD-5(S/L)	49-1/2	27-1/2	47-1/2	26	2
PE(S/T)28/29/34	GAD-2(S/L)	55-1/2	27-1/2	53-1/2	26	2
PE(S/T)33/35/38	GAD-6(S/L)	63-1/2	27-1/2	61-1/2	26	2

CAP KIT PART NUMBER (In.)

MODEL NUMBER	UNIT MODEL	ENCLOSURE SIZE
PET 23/26	CAP-1	40X24X11
PET 27	CAP-2	46X24X11
PET 28/29/33/34	CAP-3	52X24X11
PET 35/38	CAP-4	60X24X11

NOTE: CAP kit is an insulated panel that covers the entire bottom opening and is utilized for optional ducted return configuration.

In keeping with its commitment to continuous improvement, Aspen Manufacturing reserves the right to make changes without notice and incurring obligation. To stay up-to-date with this product and Aspen's trusted line of coils, air handlers, and more, go to our website. © 2025 Aspen Manufacturing. All Rights Reserved

Customer Service: info@aspenmfg.com Warranty Team: warranty@aspenmfg.com Phone: 281.441.6500 Toll Free: 800.423.9007 Fax: 281.441.6510