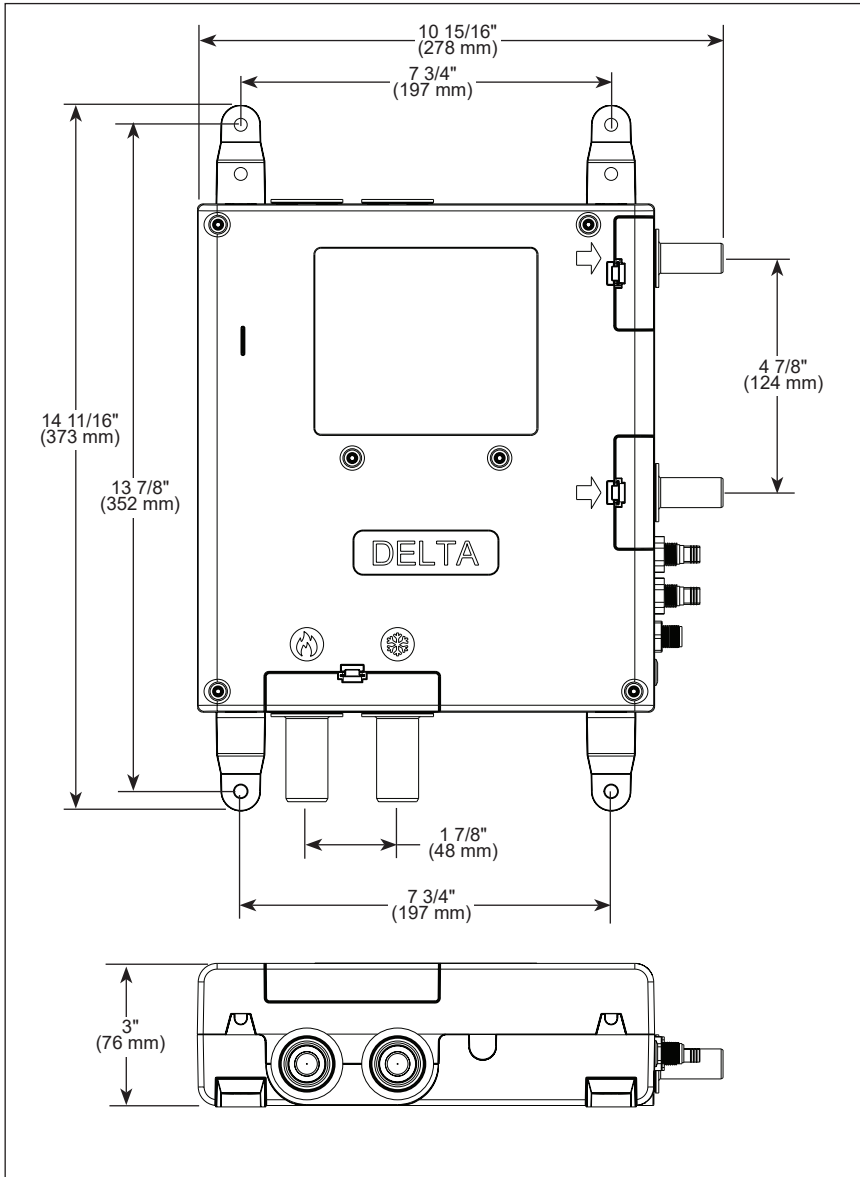


see what Delta can do™

# SHOWERSENSE™ DIGITAL 2-PORT SHOWER ROUGH



### FEATURES:

- Digital controlled thermostatic shower valve
- Independent temperature and volume control for each outlet port
- Test button for rough-in pressure check
- Diagnostic LED
- Firmware updateable through the user interface when connected to WiFi
- Separate mixing valves independently calibrated for each outlet

### STANDARD SPECIFICATIONS:

- 3/4" Brass tube inlet connections
- 1/2" Brass tube outlet connections
- Max power requirement is 60 Watts
- Maximum operating pressure is 125 PSI, 862 kPa
- Maximum water temperature is 150 °F (66 °C)
- Minimum flow for each outlet device or shower head is 1.2 gpm, 4.5 L/min
- Includes:
  - 2-Port Digital Shower Rough
  - 12VDC/60W power adapter with 2.5m wire
  - 35' interface cable
  - Interface cable adapter
- Requires 120V outlet
- Required interface 5CN-550L▲, 5CH-550L-▲, or 5CB-550L-▲, purchased separately

### WARRANTY

- Residential Digital Shower Valve: five (5) year limited warranty from the date the product is received by the original consumer purchaser or their authorized representative (installation contractor, etc.); or for commercial purchasers, 1 year from the date that the product is received by the original purchaser or their authorized representative (installation contractor, etc.).
- Residential Electronic Parts, Controls, Spa Options and Accessories: two (2) years from the date the product is received by the original consumer purchaser or their authorized representative (installation contractor, etc.). This 2 year limited warranty does not apply to controls, spa options, electronic parts and accessories that are used in commercial applications (as defined herein).
- Please go to [www.brizo.com](http://www.brizo.com) for the complete details of our limited warranty.

### Maximum Flow Rate Guide

ShowerSense™ Digital Shower Valve	40 PSI, 275 kPa		60 PSI, 414 kPa		80 PSI, 550 kPa	
	7 gpm	26 L/min	8 gpm	31 L/min	9 gpm	36 L/min
One outlet	7 gpm	26 L/min	8 gpm	31 L/min	9 gpm	36 L/min
R52000E - all outlets	13 gpm	51 L/min	16 gpm	61 L/min	18 gpm	70 L/min

### COMPLIES WITH:

- ASME A112.18.1 / CSA B125.1
- ASSE 1016 / ASME A112.1016 / CSA B125.16
- UL 1951
- CSA C22.2 No. 14
- CSA C22.2 No. 68

Delta Faucet Company reserves the right (1) to make changes in specifications and materials, and (2) to change or discontinue models, both without notice or obligation. Dimensions are for reference only. See current full-line price book or [www.deltafaucet.com](http://www.deltafaucet.com) for finish options and product availability.

DSP-R-S52000E Rev. B

### Delta Faucet Company

55 E. 111th Street, Carmel, IN 46280  
350 South Edgeware Road, St. Thomas, ON N5P 4L1  
© 2025 Delta Faucet Company