

see what Delta can do™

SHOWERSENSE™ DIGITAL 3-PORT SHOWER ROUGH

FEATURES:

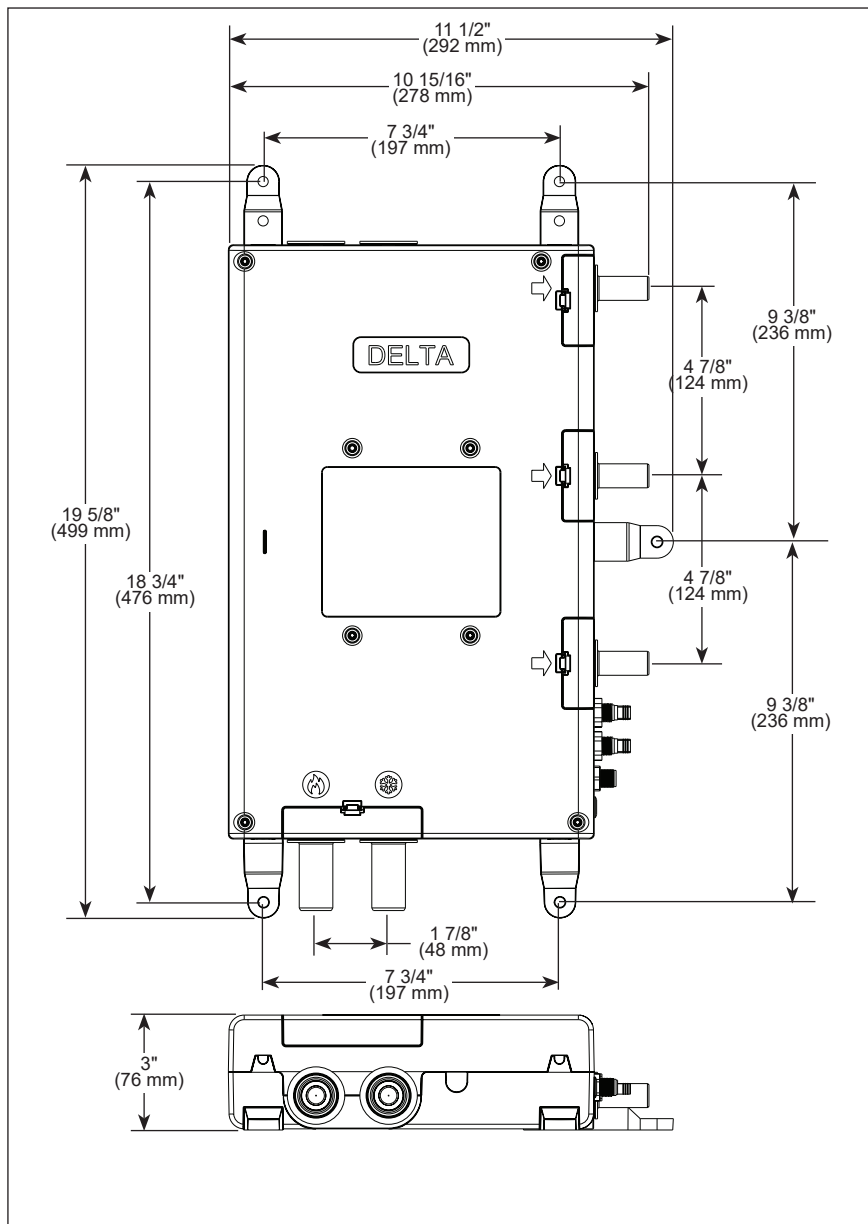
- Digital controlled thermostatic shower valve
- Independent temperature and volume control for each outlet port
- Test button for rough-in pressure check
- Diagnostic LED
- Firmware updateable through the user interface when connected to WiFi
- Separate mixing valves independently calibrated for each outlet

STANDARD SPECIFICATIONS:

- 3/4" Brass tube inlet connections
- 1/2" Brass tube outlet connections
- Max power requirement is 60 Watts
- Maximum operating pressure is 125 PSI, 862 kPa
- Maximum water temperature is 150 °F (66 °C)
- Minimum flow for each outlet device or shower head is 1.2 gpm, 4.5 L/min
- Includes:
 - 3-Port Digital Shower Rough
 - 12VDC/60W power adapter with 2.5m wire
 - 35' interface cable
 - Interface cable adapter
- Requires 120V outlet
- Required interface 5CN-550L-▲, 5CH-550L-▲, or 5CB-550L-▲, purchased separately

WARRANTY

- Residential Digital Shower Valve: five (5) year limited warranty from the date the product is received by the original consumer purchaser or their authorized representative (installation contractor, etc.); or for commercial purchasers, 1 year from the date that the product is received by the original purchaser or their authorized representative (installation contractor, etc.).
- Residential Electronic Parts, Controls, Spa Options and Accessories: two (2) years from the date the product is received by the original consumer purchaser or their authorized representative (installation contractor, etc.). This 2 year limited warranty does not apply to controls, spa options, electronic parts and accessories that are used in commercial applications (as defined herein).
- Please go to www.brizo.com for the complete details of our limited warranty.



Maximum Flow Rate Guide

ShowerSense™ Digital Shower Valve	40 PSI, 275 kPa		60 PSI, 414 kPa		80 PSI, 550 kPa	
One outlet	7 gpm	26 L/min	8 gpm	31 L/min	9 gpm	36 L/min
R53000E - all outlets	19 gpm	73 L/min	24 gpm	89 L/min	27 gpm	102 L/min

Delta Faucet Company reserves the right (1) to make changes in specifications and materials, and (2) to change or discontinue models, both without notice or obligation. Dimensions are for reference only. See current full-line price book or www.deltafaucet.com for finish options and product availability.

DSP-S-R53000E Rev. B

COMPLIES WITH:

- ASME A112.18.1 / CSA B125.1
- ASSE 1016 / ASME A112.1016 / CSA B125.16
- UL 1951
- CSA C22.2 No. 14
- CSA C22.2 No. 68

Delta Faucet Company

55 E. 111th Street, Carmel, IN 46280
350 South Edgeware Road, St. Thomas, ON N5P 4L1
© 2025 Delta Faucet Company