

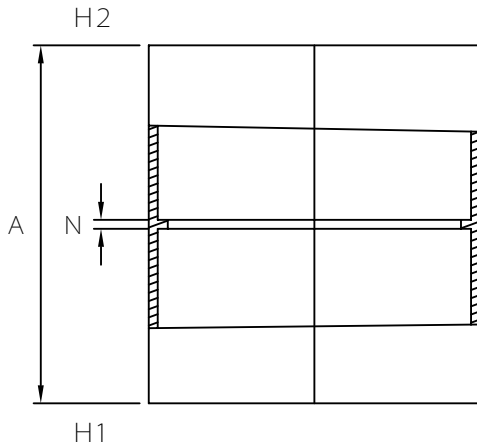


MULTI FITTINGS

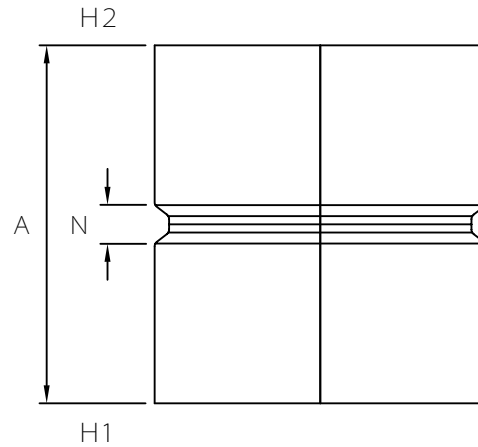
LAYING LENGTH

ISSUE DATE: 2018 02 07
SUPERCEDES: 2005 06 30

COUPLING (HxH) (WITH PIPE STOP)



INJECTION MOLDED FITTING (M)



FABRICATED FITTING (F)

	SIZE H1xH2	PART NUMBER	A REF	N REF
M	4x4	026476	3.750	0.250
M	6x6	026152	6.250	0.250
M	6x6	226038	6.250	0.250
M	8x8	026153	8.250	0.250
M	8x8	226039	8.250	0.250
F	10x10	294805	11.50	1.50
F	12x12	294807	13.50	1.50
F	14x14	294809	15.75	1.75
F	16x16	294811	17.75	1.75
F	18x18	294813	20.00	2.00
F	20x20	294815	22.25	2.25
F	24x24	294817	26.50	2.50

NOTE: Refer to Page LPD5 for Molded hub detail
Refer to Page LPD5 - 1 for Fabricated hub detail