

General Information**J-975 and J-979**

For Asbestos Cement Pipe, Cast Iron Pipe, Ductile Iron Pipe or Steel Pipe.

Jones bronze saddles are available in single and double strap. The saddles are cast from 85-5-5-5 waterworks bronze. They are specified by Jones number J-975 (Single Strap) or J-979 (Double Strap). When ordering please specify single or double strap, type and size of pipe, and type of thread, CC or IP. Straps are silicon bronze and are secured with bronze nuts.

J-995

Special Design for Steel Pipe O.D. to be used on Steel Size PVC Pipe Only.

Available in sizes 2" to 8" with taps 3/4" to 2". Please specify CC or IP tap.

J-996

Special Design for C-900 Cast Iron Size PVC Pipe Only.

Available in sizes 4" to 12" with taps 3/4" to 2-1/2" IP. Please specify CC or IP tap.

This two-piece design affords simplicity and speed of installation and offers maximum support around the entire pipe. Wide, solid band allows distribution of pressure over wide areas.

The Buna-N O-Ring is glued into a groove that is cast into the saddle. This O-Ring forms a seal on the pipe surface when tightened.

When pressurizing plastic pipe there is a possibility of pipe expansion. **Caution should be taken for proper tightening.**

1. It is suggested that users tighten to 15 to 18 ft. lbs. of torque on 4" to 8" saddles, and 10" to 12" saddles use 25 to 35 ft. lbs.
2. Keep even space between top and bottom section of saddle on each side.
3. Be sure saddle is pulled down evenly so the O-Ring seals properly.

J-965 or J-969

Designed for C-900 Plastic Pipe. Available in single and double strap. Straps are stainless steel. Top section is Cast Bronze 85-5-5-5. Torque to installation instructions attached to saddle.

Bronze Service Saddles for cast iron, ductile iron, A-C pipe, & AWWA C900 PVC plastic pipe.

- ❑ **THICK TAPPING BOSS** – precision machined for a pressure tight connection that resists pull-out.



- ❑ **HEAVY BODY** – provides strength at critical stress points. Constructed of 85-5-5-5 ASTM B62 brass.
- ❑ **STRAPS** – Silicon Bronze are flattened to provide increased gripping surface. 304L stainless steel - for additional pipe support.*



- ❑ **ROLLED STRAP THREADS** – for added strength.

- ❑ **MANUFACTURED AND TESTED** – in accordance with all applicable parts of ANSI/AWWA C800 – NSF 61 Certified.

- ❑ **NITRILE O-RING GASKET** – is cemented in place and confined in a retaining groove, for pressure tight seal on the main.

- ❑ **BODY CURVATURE** – designed to fit pipe accurately for secure clamping and uniform sealing pressure.

*Stainless steel strap recommended for saddle used on AWWA OD C900 PVC.

WARNING: Use on A-C pipe, which contains a known carcinogen, requires appropriate protective equipment and procedures be employed.

Bronze Saddles for O.D. Controlled PVC Pipe

- ❑ **THICK TAPPING BOSS** – precision machined for a pressure tight connection that resists pull-out. Generous wrenching surfaces to provide sure grip while installing corporation valve.



- ❑ **MANUFACTURED AND TESTED** – in accordance with all applicable parts of ANSI/AWWA C800-NSF 61 Certified.

- ❑ **NITRILE O-RING SEALED** – glued in place and confined in a groove to resist cold-flow or distortion and provide a pressure tight seal against the main.



- ❑ **SILICON BRONZE SCREWS** – for strength and corrosion resistance (also hinge pin on swing hinge style).

- ❑ **WIDE STRAP** – is specially shaped to fit the contour of the O.D. controlled plastic main and seal dependably without pipe distortion. Double-wide straps on saddles with 1-1/2" or 2" tapped outlets for added stability.

Bronze Service Saddle with Single Bronze Strap

- Outlet tapped with either AWWA taper (C.C.) or AWWA I.P. thread (F.I.P.T.)
- For use on A-C** pipe, cast iron or ductile iron pipe
- 200 psig (1379 kPa) maximum working pressure
- Brass body
- Flattened silicon bronze straps
- Roll strap threads
- O-ring sealed outlet
- 1/2" thru 1" tap sizes
- Meets all applicable parts of ANSI/AWWA C800
- NSF 61 Certified



J-975 Series

Nominal Pipe Size in Inches	Pipe O.D. Range*		Thread Type	Tap Size	
	Inch	mm		3/4" Tap Part Number	1" Tap Part Number
4"	4.74-5.32	121.0-135.0	CC	38-1219	38-1250
			IP	38-1204	38-1234
6"	6.84-7.45	174.0-189.0	CC	38-1222	38-1253
			IP	38-1207	38-1237
8"	8.99-9.67	229.0-245.0	CC	38-1225	38-1256
			IP	38-1210	38-1241
10"	11.04-12.12	281.0-307.0	CC	38-1229	38-1260
			IP	38-1214	38-1245
12"	13.14-14.58	334.0-370.0	CC	38-1231	38-1262
			IP	38-1216	38-1247

*A-C pipe, classes 150-200 per ASTM C295 and AWWA C400 – actual O.D. of pipe being used must fall within the pipe O.D. range listed in the preceding charts. Centrifugally cast pipe, classes 50-250 per ANSI/AWWA C102/A21.2; ANSI/AWWA C106/A21.6; ANSI/AWWA C108/A21.8, and Federal specification WW-P-421. Ductile iron pipe, classes 50-56 per ANSI/AWWA C151/A21.51; Cast iron O.D. PVC plastic pipe per AWWA C900.

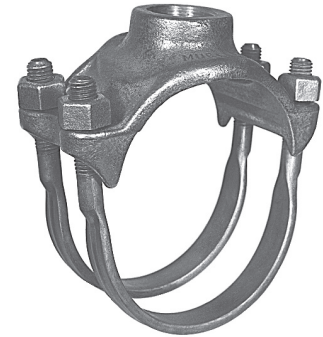
** The outside diameter of A-C pipe varies from manufacturer to manufacturer, to make certain you select the proper clamp: 1) Determine the O.D. of the pipe at the point of saddle installation; 2) From the pipe O.D. range column of the above chart, choose a saddle that has a pipe O.D. range that includes the determined pipe diameter.



WARNING: Use on A-C pipe, which contains a known carcinogen, requires appropriate protective equipment and procedures be employed.

Bronze Service Saddle with Double Bronze Straps

- Outlet tapped with either AWWA taper (C.C.) or AWWA I.P. thread (F.I.P.T.)
- For use on A-C** pipe, cast iron or ductile iron pipe and cast iron O.D.
- 200 psig (1379 kPa) maximum working pressure
- Brass body
- Flattened silicon bronze straps
- Rolled strap threads
- O-ring sealed outlet
- 3/4" thru 2" tap sizes (1/2" or 5/8" some styles)
- Meets all applicable parts of ANSI/AWWA C800
- NSF 61 Certified



J-979 Series

Nominal Pipe Size in Inches	Pipe O.D. Range*		Thread Type	Tap Size				
	Inch	mm		3/4" Tap Part Number	1" Tap Part Number	1-1/4" Tap Part Number	1-1/2" Tap Part Number	2" Tap Part Number
4"	4.47-5.32	121.0-135.0	CC	38-1010	38-1011	38-1096	38-1132	38-1168
			IP	38-1008	38-1009	38-1077	38-1114	38-1150
6"	6.84-7.45	174.0-189.0	CC	38-1022	38-1023	38-1099	38-1135	38-1171
			IP	38-1020	38-1021	38-1609	38-1117	38-1153
8"	8.99-9.67	229.0-245.0	CC	38-1034	38-1035	38-1102	38-1138	38-1174
			IP	38-1032	38-1033	38-1083	38-1120	38-1156
10"	11.04-12.12	281.0-307.0	CC	38-1050	38-1051	38-1104	38-1142	38-1178
			IP	38-1048	38-1049	-	38-1124	38-1160
12"	13.14-14.58	334.0-370.0	CC	38-1062	38-1063	38-1109	38-1145	38-1181
			IP	38-1060	38-1061	38-1090	38-1127	38-1163
14"	15.22-16.88	386.6-428.7	CC	38-1070	38-1071	-	38-1147	38-1183
			IP	38-1068	38-1069	-	38-1129	38-1165
16"	17.32-19.19	439.9-487.4	CC	38-1074	38-1075	-	38-1148	38-1184
			IP	38-1072	38-1073	-	38-1130	38-1166
18"	18.00-19.50	457.2-495.3	CC	38-1700	38-1701	38-1702	38-1703	38-1704
			IP	38-1705	38-1706	38-1707	38-1708	38-1709
20"	20.00-24.30	508.0-624.8	CC	38-1710	38-1711	38-1712	38-1713	38-1714
			IP	38-1715	38-1716	38-1717	38-1718	38-1719
24"	24.00-25.80	609.6-655.3	CC	38-1720	38-1721	38-1722	38-1723	38-1724
			IP	38-1725	38-1726	38-1727	38-1728	38-1729

*A-C pipe, classes 150-200 per ASTM C295 and AWWA C400 – actual O.D. of pipe being used must fall within the pipe O.D. range listed in the preceding charts. Centrifugally cast pipe, classes 50-250 per ANSI/AWWA C102/A21.2; ANSI/AWWA C106/A21.6; ANSI/AWWA C108/A21.8, and Federal specification WW-P-421. Ductile iron pipe, classes 50-56 per ANSI/AWWA C151/A21.51; Cast iron O.D. PVC plastic pipe per AWWA C900.

** The outside diameter of A-C pipe varies from manufacturer to manufacturer, to make certain you select the proper clamp: 1) Determine the O.D. of the pipe at the point of saddle installation; 2) From the pipe O.D. range column of the above chart, choose a saddle that has a pipe O.D. range that includes the determined pipe diameter.

WARNING: Use on A-C pipe, which contains a known carcinogen, requires appropriate protective equipment and procedures be employed.

Bronze Service Saddle with Single Stainless Steel Strap

- Outlet tapped with either AWWA taper (C.C.) or AWWA I.P. thread (F.I.P.T.)
- For use on A-C** pipe, cast iron or ductile iron pipe and C900 PVC pipe
- 200 psig (1379 kPa) maximum working pressure
- Brass body
- 304L stainless steel straps
- Roll strap threads
- O-ring sealed outlet
- 1/2" thru 1" tap sizes
- Meets all applicable parts of ANSI/AWWA C800
- NSF 61 Certified



J-965 Series

Nominal Pipe Size in Inches	Pipe O.D. Range*		Thread Type	Tap Size	
	Inch	mm		3/4" Tap Part Number	1" Tap Part Number
4"	4.74-5.32	121.0-135.0	CC	38-1389	38-1390
			IP	38-1386	38-1387
6"	6.48-7.45	174.0-189.0	CC	38-1395	38-1396
			IP	38-1392	38-1393
8"	8.99-9.67	229.0-245.0	CC	38-1401	38-1402
			IP	38-1398	38-1399
10"	11.04-12.12	281.0-307.0	CC	38-1406	38-1407
			IP	-	38-1405
12"	13.14-14.58	334.0-370.0	CC	38-1410	38-1411
			IP	38-1408	38-1409

*A-C pipe, classes 150-200 per ASTM C295 and AWWA C400 – actual O.D. of pipe being used must fall within the pipe O.D. range listed in the preceding charts. Centrifugally cast pipe, classes 50-250 per ANSI/AWWA C102/A21.2; ANSI/AWWA C106/A21.6; ANSI/AWWA C108/A21.8, and Federal specification WW-P-421. Ductile iron pipe, classes 50-56 per ANSI/AWWA C151/A21.51; Cast iron O.D. PVC plastic pipe per AWWA C900.

** The outside diameter of A-C pipe varies from manufacturer to manufacturer, to make certain you select the proper clamp: 1) Determine the O.D. of the pipe at the point of saddle installation; 2) From the pipe O.D. range column of the above chart, choose a saddle that has a pipe O.D. range that includes the determined pipe diameter.



WARNING: Use on A-C pipe, which contains a known carcinogen, requires appropriate protective equipment and procedures be employed.

Section – Bronze Saddles



Bronze Service Saddle with Double Stainless Steel Straps

- Outlet tapped with either AWWA taper (C.C.) or AWWA I.P. thread (F.I.P.T.)
- For use on A-C** pipe, cast iron or ductile iron pipe and cast iron O.D. PVC pipe
- 200 psig (1379 kPa) maximum working pressure
- Brass body
- 304L stainless steel straps
- Rolled strap threads
- O-ring sealed outlet
- 3/4" thru 2" tap sizes (1/2" or 5/8" some styles)
- Meets all applicable parts of ANSI/AWWA C800
- NSF 61 Certified



J-969 Series

Nominal Pipe Size in Inches	Pipe O.D. Range*		Thread Type	Tap Size				
	Inch	mm		3/4" Tap Part Number	1" Tap Part Number	1-1/4" Tap Part Number	1-1/2" Tap Part Number	2" Tap Part Number
4"	4.74-5.32	121.0-135.0	CC	38-1350	38-1351	-	38-1352	38-1353
			IP	38-1346	38-1347	38-1418	38-1348	38-1349
6"	6.48-7.45	174.0-189.0	CC	38-1358	38-1359	-	38-1360	38-1361
			IP	38-1354	38-1355	38-1419	38-1356	38-1357
8"	8.99-9.67	229.0-245.0	CC	38-1366	38-1367	-	38-1368	38-1369
			IP	38-1362	38-1363	38-1420	38-1364	38-1365
10"	11.04-12.12	281.0-307.0	CC	38-1374	38-1375	-	38-1376	38-1377
			IP	38-1370	38-1371	38-1421	38-1372	38-1373
12"	13.14-14.58	334.0-370.0	CC	38-1382	38-1383	-	38-1384	38-1385
			IP	38-1378	38-1379	38-1422	38-1380	38-1381
14"	15.22-16.88	386.6-428.7	CC	-	38-1513	-	-	38-1515
			IP	38-1508	38-1509	-	38-1510	38-1511
16"	17.32-19.19	439.9-487.4	CC	38-1520	38-1521	-	38-1522	38-1523
			IP	38-1516	38-1517	-	38-1518	38-1519
18"	18.00-19.50	457.2-495.3	CC	38-1730	38-1731	38-1732	38-1733	38-1734
			IP	38-1735	38-1736	38-1737	38-1738	38-1739
20"	20.00-24.30	508.0-624.8	CC	38-1740	38-1741	38-1742	38-1743	38-1744
			IP	38-1745	38-1746	38-1747	38-1748	38-1749
24"	24.00-25.80	609.6-655.3	CC	38-1750	38-1751	38-1752	38-1753	38-1754
			IP	38-1755	38-1756	38-1757	38-1758	38-1759

*A-C pipe, classes 150-200 per ASTM C295 and AWWA C400 – actual O.D. of pipe being used must fall within the pipe O.D. range listed in the preceding charts. Centrifugally cast pipe, classes 50-250 per ANSI/AWWA C102/A21.2; ANSI/AWWA C106/A21.6; ANSI/AWWA C108/A21.8, and Federal specification WW-P-421. Ductile iron pipe, classes 50-56 per ANSI/AWWA C151/A21.51; Cast iron O.D. PVC plastic pipe per AWWA C900.

** The outside diameter of A-C pipe varies from manufacturer to manufacturer, to make certain you select the proper clamp: 1) Determine the O.D. of the pipe at the point of saddle installation; 2) From the pipe O.D. range column of the above chart, choose a saddle that has a pipe O.D. range that includes the determined pipe diameter.

WARNING: Use on A-C pipe, which contains a known carcinogen, requires appropriate protective equipment and procedures be employed.

O.D. Controlled Bronze Service Saddle For IPS O.D. PVC

- Outlet tapped with either AWWA taper (C.C.) or AWWA I.P. thread (I.P.T.)
- For use on IPS PVC pipe (I.D. controlled)
- 3/4" thru 2" tap sizes
- NSF 61 Certified

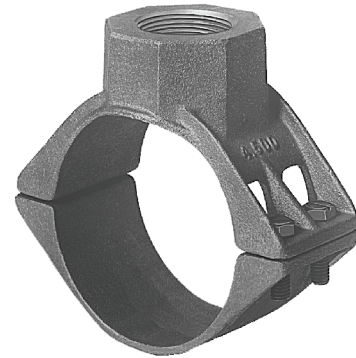


J-995 Series

Nominal Pipe Size in Inches	Pipe O.D. In Inches	Thread Type	Tap Size			
			3/4" Tap Part Number	1" Tap Part Number	1-1/2" Tap Part Number	2" Tap Part Number
2"	2.375	CC	38-0515	38-0527	-	-
		IP	38-0514	38-0522	-	-
2-1/2"	2.875	CC	38-0517	38-0528	-	-
		IP	38-0516	38-0523	-	-
3"	3.500	CC	38-0519	38-0529	-	-
		IP	38-0518	38-0524	-	-
4"	4.500	CC	38-0521	38-0530	38-0547	-
		IP	38-0520	38-0525	38-0546	38-0548
6"	6.625	CC	38-0532	38-0534	38-0552	-
		IP	38-0531	38-0533	38-0551	38-0553
8"	8.625	CC	38-0541	38-0543	38-0557	-
		IP	38-0540	38-0542	38-0556	38-0558

O.D. Controlled Bronze Service Saddle For Cast Iron O.D. PVC Made to AWWA/ANSI C-900 Standard

- Outlet tapped with either AWWA taper (C.C.) or AWWA I.P. thread (F.I.P.T.)
- For use on C-900, Cast Iron sized PVC pipe (O.D. controlled)
- 3/4" thru 2" tap sizes
- NSF 61 Certified



J-996 Series

Nominal Pipe Size in Inches	Pipe O.D. In Inches	Thread Type	Tap Size			
			3/4" Tap Part Number	1" Tap Part Number	1-1/2" Tap Part Number	2" Tap Part Number
4"	4.80	CC	38-0560	38-0562	38-0565	38-0594
		IP	38-0559	38-0561	38-0564	38-0566
6"	6.90	CC	38-0625	38-0627	38-0573	38-0593
		IP	38-0624	38-0626	38-0572	38-0574
8"	9.05	CC	38-0621	38-0623	38-0581	38-0583
		IP	38-0620	38-0622	38-0580	38-0582
10"	11.10	CC	38-0600	38-0602	38-0589	38-0591
		IP	38-0599	38-0601	38-0588	38-0590
12"	13.20	CC	38-0596	38-0598	38-0586	38-0587
		IP	38-0595	38-0897	38-0585	38-0584