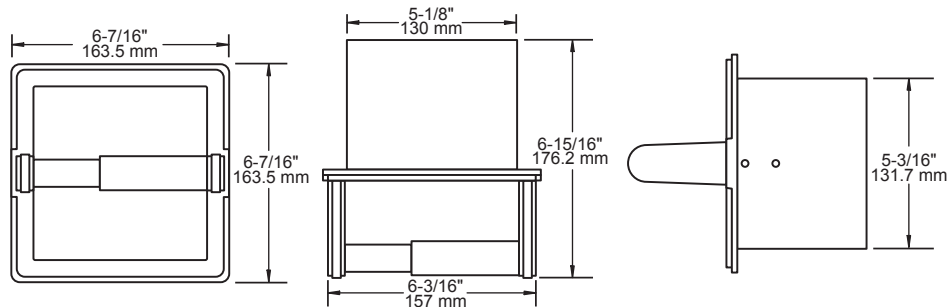
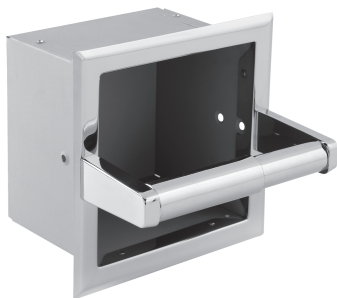


TECHNICAL DATA

Recessed Fixtures

RECESSED EXTRA ROLL TOILET PAPER HOLDER - 970



- MATERIALS:** Recessed storage box is 25 gauge grey galvanized steel. Projecting posts are die cast from the highest quality virgin zinc alloy (Zamak) to meet ASTM standard B-86. Roller is of matching plastic and is spring actuated.
- INSTALLATION:** Cut out wall opening 5-1/4" x 5-1/4" x 4" depth. If wood blocking is available, install recessed box into opening using 2 - #8 x 1-1/4" flat head nickel plated screws provided. If wood blocking is not available use optional 901R recess.
- SPECIFICATION:** Recessed extra roll toilet paper holder shall be model _____
(fill in model number) by Liberty Hardware Manufacturing Corporation.