



FAUCET GROUP

FINISH

Polished chrome plate

FLOW RATE

2.2 GPM flow restricting aerator

A.D.A. COMPLIANT

Yes

VARIANTS

JS-48-TA1-DJ = JS-48-TA1 with spout extension

OPTIONS

HANDLES

4" Wrist Blades "W4"

6" Wrist Blades "W6"

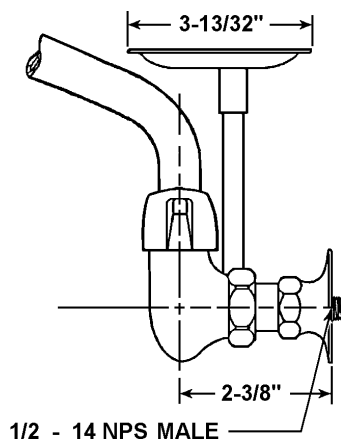
AERATOR

Duo Stream Swivel "B"

VANDAL RESISTANT

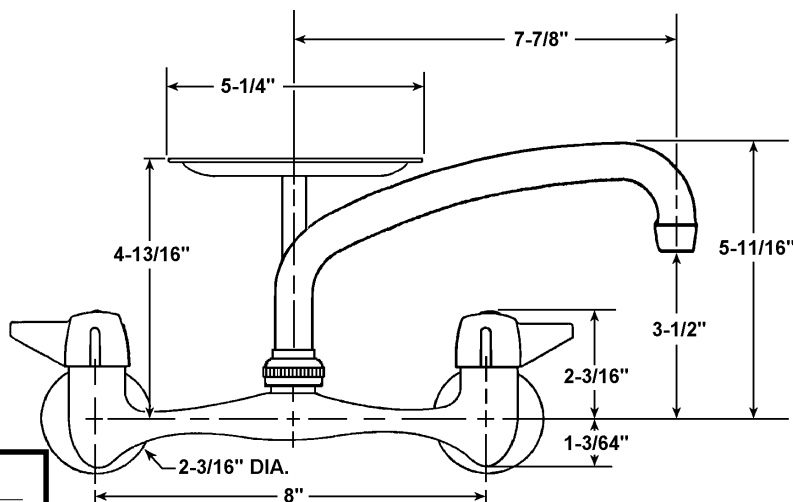
Handle "VR-H"

Aerator "VR-A"



TECHNICAL DATA CONSTRUCTION:

Exposed wallmount on 8 inch centers
Solid, heavy duty cast brass body
Brass 8" tube spout
Chrome plated brass soap dish
Brass quarter turn quick compression stem units
Replaceable seats
Replaceable reinforced nitrile rubber packing
Replaceable Buna-N seat washers
Chrome plated die cast lever handles
Handles are indexed "H" & "C"
Equipped with water saving aerator
Conforms with ANSI standard 112.18.1
Certified NSF/ANSI 61



Job Name _____
Customer _____
Architect/Engineer _____

APPROVED FOR MANUFACTURING

MODEL NO. _____ QTY. _____

COMPANY _____

TITLE _____ DATE _____

SIGNATURE _____

JUST MFG. COMPANY CONTINUES TO MAKE QUALITY AND FUNCTIONALITY A MARK OF THE JUST PRODUCT LINE. TO DO SO REQUIRES THAT WE RESERVE THE RIGHT TO CHANGE PRODUCT INFORMATION WITHOUT NOTICE. DIMENSIONS MAY VARY AND ARE SUBJECT TO CHANGE WITHOUT NOTICE. NO RESPONSIBILITY IS ASSUMED FOR USE OF SUPERCEDED OR VOIDED DATA. FOR THE MOST CURRENT AND ACCURATE INFORMATION REGARDING THE COMPLETE LINE OF JUST SINKS, FAUCETS AND DRAINS, CLICK ON THE **SPEC LINE DRAWINGS** LINK ON OUR WEB SITE AT www.justmfg.com

JUST MANUFACTURING COMPANY

9233 KING STREET . FRANKLIN PARK . ILLINOIS . 60131-2111

PH: 847-678-5150 . FAX: 847-678-6817

E-MAIL: custserv@justmfg.com . www.justmfg.com

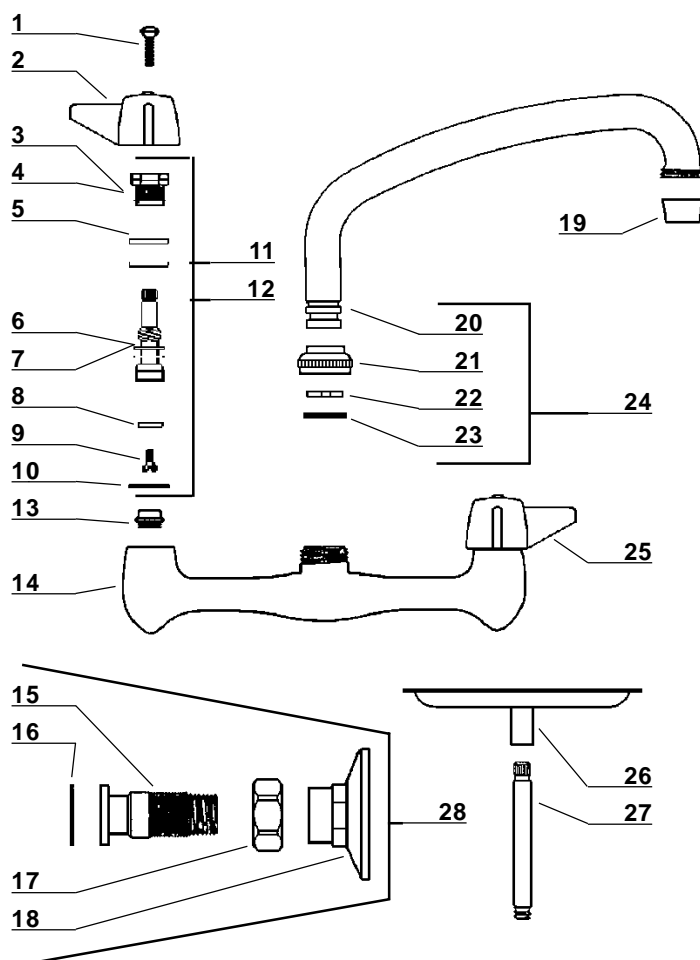
SUBMITTAL DATA

JS-48-TA1



FAUCET GROUP

WALL MOUNTED SINK FAUCET



Item No.	Part No.	Description
1	107-F	Handle Screw
2	523-H	Handle - Hot
3	454-EWC	Bonnet (Cold Side)
4	454-EWH	Bonnet (Hot Side)
5	1038-453	O-Ring
6	454-FL	Stem (Cold Side)
7	454-FR	Stem (Hot Side)
8	901-WN	Seat Washer
9	104	Seat Washer Screw
10	1028-Y	Gasket
11	SU-454-EL	Stem Sub-Unit (Cold Side)
12	SU-454-ER	Stem Sub-Unit (Hot Side)
13	263-BC	Replaceable Seat
14	2831-CP	Body
15	2846	Male Shank
16	940-TR	Rubber Washer
17	PF-2843-49	Coupling Nut
18	1146	Flange
19	30-M	Aerator
20	PF-363-RA	Spout
21	PF-782-DES	Spout Nut
22	166-F	Snap Ring
23	1038-K	O-Ring
24	SU-363-R	8" Spout Assembly
25	523-C	Handle - Cold
26	SU-259-A	Soap Dish
27	PF-285-D	Soap Dish Post
28	SU-2846	Mounting Assembly

JUST MFG. COMPANY CONTINUES TO MAKE QUALITY AND FUNCTIONALITY A MARK OF THE JUST PRODUCT LINE. TO DO SO REQUIRES THAT WE RESERVE THE RIGHT TO CHANGE PRODUCT INFORMATION WITHOUT NOTICE. DIMENSIONS MAY VARY AND ARE SUBJET TO CHANGE WITHOUT NOTICE. NO RESPONSIBILITY IS ASSUMED FOR USE OF SUPERCEDED OR VOIDED DATA. FOR THE MOST CURRENT AND ACCURATE INFORMATION REGARDING THE COMPLETE LINE OF JUST SINKS, FAUCETS AND DRAINS, CLICK ON THE **SPEC LINE DRAWINGS** LINK ON OUR WEB SITE AT www.justmfg.com

JUST MANUFACTURING COMPANY

9233 KING STREET . FRANKLIN PARK, ILLINOIS . 60131-2111

PH: 847-678-5150 . FAX: 847-678-6817

E-MAIL: custserv@justmfg.com . www.justmfg.com