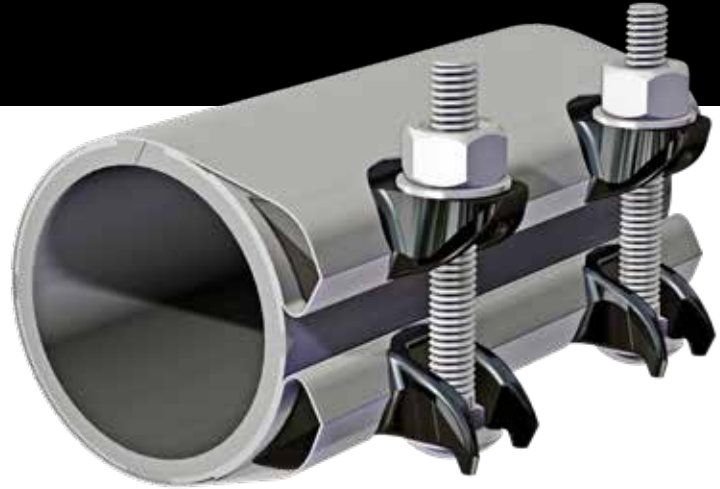


SCC REPAIR CLAMP

SUBMITTAL INFORMATION



MATERIALS

SHELL

304 Stainless Steel 24 gauge per ASTM A240.

LUGS

The lugs are cast from ductile (nodular) iron, meeting or exceeding ASTM A 536. Coated with Xylan 1212 for extra corrosion protection.

BOLTS & NUTS

Carriage-head carbon steel, National Coarse UNC rolled thread and heavy hex nuts, electro galvanized with dichromate finish.

ARMORS

18 gauge 304 Stainless Steel, bonded to gasket to bridge gap at lug area.

GASKETS

Virgin NBR (nitrile butadiene rubber) rubber compound for water and sewer service in accordance with ASTM D 2000.

STANDARD

Complies with ANSI/AWWA Standard C230 Stainless-Steel Full-encirclement Repair and Service Connection Clamps. Also complies with NSF 61 and NSF 372.

SIZES & RANGES

See catalog.

9/17

Document # 10-8-0026

This information is based on the best data available at the date printed above. Please check with Romac for any updates or changes.