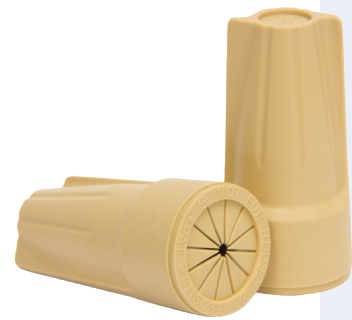


DRYCONN®

WATERPROOF CONNECTORS

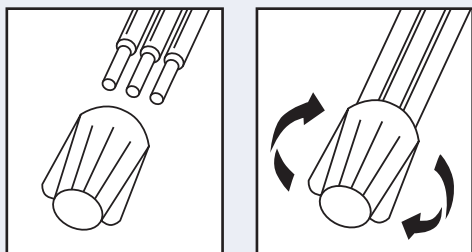
Filled Connectors for Low Voltage Use



INSTALLATION INSTRUCTIONS

IMPORTANT: Turn off power before installing or removing connector. Product to be used in accordance with local and national codes.

1. Strip wires 5/8".
2. Align frayed strands or conductors.
3. No pre-twisting needed. Hold stripped wires together with ends even. Note: Twist and lead stranded wires slightly.
4. Push wires firmly into connector when starting.
5. Twist connector onto wires pushing firmly until tight. Do not over torque. Do not reuse.



DryConn® Tan Low Voltage

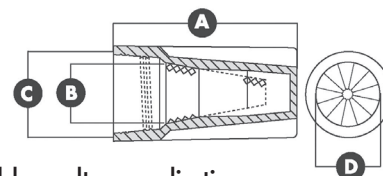
Catalog #	Selling Unit
20101	Card of 4
20111	Bag of 15
20122	Bag of 50
20136	Canister of 50

PRODUCT SPECIFICATIONS & MEASUREMENTS

Max. Voltage: 30V/10 AMP
 Connector Size: 13/16" x 1 9/16"
 Wire Type: Copper/Copper
 Wire Range: Min #22/Max #6
 Temperature Rating: 75°C (167°F)

Measurements (Inches):

A - 1.563 B - 0.813
 C - 0.656 D - 0.656



Suitable for all underground low voltage applications.

30V/10 AMP

3-6 #22	3 #18 w/1-3 #12, 14 or 16	2 #14 w/1-2 #12
2-6 #18 or 20	3 #18 w/1-2 #10	2 #14 w/1 #8 or 10
1-6 #14 or 16	4 #18 w/1-2 #12, 14 or 16	3 #14 w/1 #10 or 12
1-3 #10 or 12	4 #18 w/1 #10	3 #14 w/2 #12
4 #12 solid	5 #18 w/1 #14 or 16	4 #14 w/1 #12
1 #6	1 #16 w/1-4 #12 or 14	1 #12 w/1 #8 or 10
1 #22 w/2-5 #20	1 #16 w/1-2 #10	2 #12 w/1 #10
1 #22 w/1-5 #16 or 18	2 #16 w/1-4 #14	1 #22 w/1 #16 & 18
2 #22 w/1-4 #16, 18 or 20	2 #16 w/1-3 #12	1 #22 w/1-2 #16 & 1 #20
3 #22 w/1-3 #16, 18 or 20	2 #16 w/1-2 #10	1 #16 w/1 #10 or 12 & 1-2 #14
4 #22 w/1-2 #16, 18 or 20	3 #16 w/1-3 #14	1-2 #16 w/1 #10 & 12
1 #20 w/1-4 #14, 16 or 18	3 #16 w/1-2 #10 or 12	2 #16 w/1-2 #12 & 1 #14
2 #20 w/1-3 #14, 16 or 18	4 #16 w/1-2 #12 or 14	2 #16 w/1 #12 & 2 #14
3 #20 w/1-2 #14, 16 or 18	4 #16 w/1 #10	3 #16 w/1 #10 or 12 & 1 #14
4 #20 w/1-2 #14, 16 or 18	5 #16 w/1 #14	4 #16 w/1 #10 & 12
1 #18 w/1-4 #12 or 14	5 #16 solid w/1 #10 solid	2 #14 w/1 #10 & 1-2 #12
1-2 #18 w/1-2 #10	1 #14 solid w/1-3 #12	2 #14 w/1 #10 & 12
2 #18 w/1-4 #12, 14 or 16	1 #14 w/1-2 #10	



50100-08 REV G 06/23



MADE IN U.S.A.

www.kinginnovation.com

(P) 800.633.0232

(F) 636.519.5410