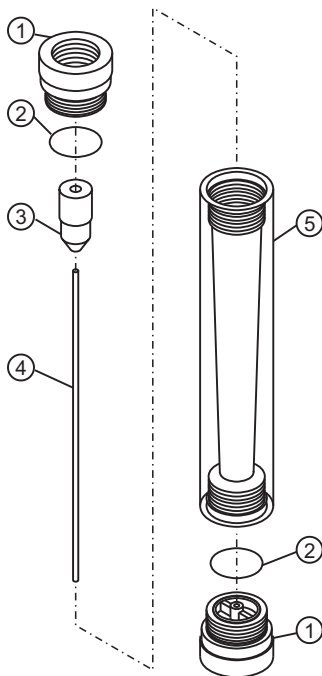


## EXPLODED VIEW, PARTS LIST AND SPECS

### EXPLODED VIEW



### PARTS LIST

| Item | Catalog Number | Description            | Qty |
|------|----------------|------------------------|-----|
| 1    | F-4019         | 1/4" FPT Adapter (PP)  | 2   |
| 1    | F-4001NS       | 3/8" FPT Adapter (PP)  | 2   |
| 1    | F-4003NS       | 1/2" FPT Adapter (PP)  | 2   |
| 2    | 90003-119      | O-ring, 117, (Viton)** | 2   |
| 3    | -              | Float (SS)*            | 1   |
| 4    | F-4004         | Guide wire, (SS)*      | 1   |
| 5    | -              | Meterbody (Acrylic)    | 1   |

*Shading indicates item not sold separately*

\*Hastelloy C-276 Option Available  
\*\*EP Option Available

SS = # 316 Stainless Steel  
PP = Polypropolyne

### METER SPECS

|                        |                                     |
|------------------------|-------------------------------------|
| <b>Scale</b>           | Permanent dual scale silkscreen     |
| <b>Max Pressure</b>    | See Temperature vs. Pressure chart* |
| <b>Max Temperature</b> | See Temperature vs. Pressure chart* |
| <b>Height</b>          | 8.1875" (208.0mm)                   |
| <b>Width</b>           | 1.25" (31.75mm)                     |
| <b>Accuracy</b>        | ± 5% of full scale reading          |

## Application Notes

Although meters may be suitable for other chemicals, Blue-White cannot guarantee their suitability. It is the responsibility of the user to determine the suitability of the flowmeter in their application. **Flowmeters are tested and calibrated for water only.**

## Maintenance

The "Exploded View" drawing illustrates assembly of the F-400N series meter. If your flowmeter needs to be cleaned refer to this drawing when reassembling the unit. The tapered tube may be cleaned with a soft bottle brush. Use a MILD soap and water solution for cleaning purposes. Note the floats "up" position.