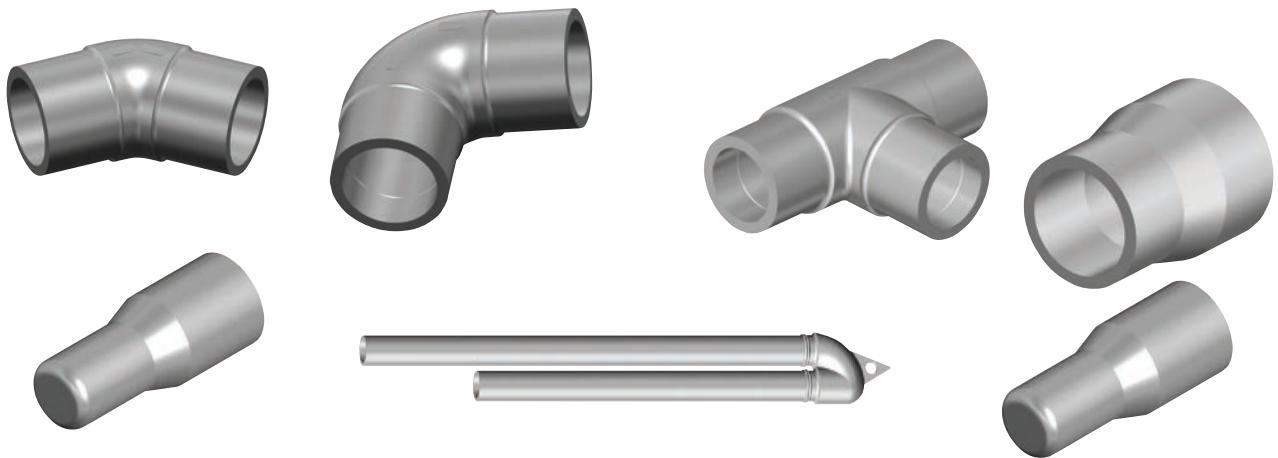


Conventional Fusion: Butt Fusion Fittings



GF Central Plastics' Molded PE2406/PE2708 Butt fittings are manufactured and tested to the requirements of ASTM D2513 and ASTM D3261 and are sized for use with pipe conforming to ASTM D2513 and with Butt fittings conforming to ASTM D3261. GF Central Plastics' PE2406/PE2708 Butt fittings are molded from a virgin yellow medium density resin in accordance with the material specifications listed in ASTM D3350 with a designation of PE2406/PE2708. All GF Central Plastics' PE2406/PE2708 Butt Fittings are compatible for heat fusion with any pipe or fitting manufactured from a like or similar resin. GF Central Plastics' PE2406/PE2708 fittings have been qualified for fusion using PPI generic fusion procedures.

GF Central Plastics' Molded PE3408/PE4710 Butt fittings are manufactured and tested to the requirements of ASTM D2513, ASTM D3261, and ANSI/AWWA C906 for use with outside diameter controlled pipe and fittings conforming to ASTM D2513, ASTM D3035, ASTM F-714. GF Central Plastics' PE3408/PE4710 Butt fittings are molded from an NSF listed resin in accordance with the material specifications listed in ASTM D3350 with a

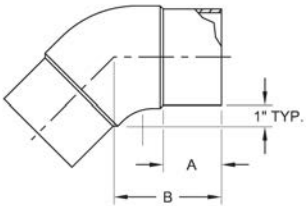
designation of PE3408/PE4710. GF Central Plastics' PE3408/PE4710 Butt fittings are manufactured and tested to the requirements of ASTM D2513 and ASTM D3261 (where applicable) and are compatible for heat fusion with any pipe and or fitting manufactured from a like or similar resin. GF Central Plastics' PE3408/PE4710 fittings have been qualified for fusion using PPI generic fusion procedures.

Features

- Pressure rated for natural gas and potable water applications.
- IAPMO Approved (where applicable).
- CSA Approved (where applicable).
- PE3408/PE4710 FM Approved (where applicable).
- PE3408/PE4710 fittings are tested to the requirements of AWWA C906.
- Can be joined by butt, socket, electrofusion or mechanical methods.
- Can be heat fused with all conventional and electrofusion fusion methods.

Butt Elbow

45° Butt Elbow PE2406/PE2708 IPS



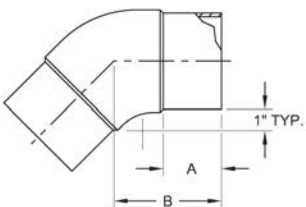
BUTT FITTINGS: 45° Butt Elbow PE2406/PE2708 IPS, DR11/11.5

- Approval: ASTM D2513
 - Approval: ASTM D3261
 - *Approval: CSA B137.4
- Please call for more information on availability, pricing, other sizes and dimensions.

| <...> | Size (inch) | GFCP Part No. | GF Part No. | weight (lb) | A (inch) | B (inch) | Box Qty |
|-------|----------------|------------------|----------------|----------------|-------------|-------------|---------|
| | 3 | 6910559 | 360 000 188 | 1.609 | 3.13 | 5.00 | 10 |
| * | 4 | 6911483 | 360 000 195 | 2.668 | 3.00 | 5.00 | 10 |
| | 6 | 10014452 | 360 029 220 | 8.598 | 4.96 | 9.00 | 2 |
| | 8 | 10014471 | | 18.630 | 6.56 | 11.50 | 2 |

BUTT FITTINGS: 45° Butt Elbow PE2406/PE2708 IPS, DR13.5

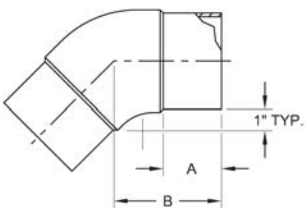
- Approval: ASTM D2513
 - Approval: ASTM D3261
- Please call for more information on availability, pricing, other sizes and dimensions.



| Size (inch) | GFCP Part No. | GF Part No. | weight (lb) | A (inch) | B (inch) | Box Qty |
|----------------|------------------|----------------|----------------|-------------|-------------|---------|
| 4 | 6911526 | 360 000 197 | 2.513 | 3.00 | 5.00 | 10 |
| 6 | 10014453 | | 4.700 | 4.96 | 9.00 | 2 |
| 8 | 10014472 | | 18.400 | 6.56 | 11.50 | 2 |
| 10 | 6910964 | 360 000 170 | 36.509 | 6.00 | 13.25 | 1 |
| 12 | 6910967 | 360 000 181 | 60.495 | 7.50 | 15.75 | 1 |

BUTT FITTINGS: 45° Butt Elbow PE2406/PE2708 IPS, DR11

- Approval: ASTM D2513
 - Approval: ASTM D3261
- Please call for more information on availability, pricing, other sizes and dimensions.



| Size (inch) | GFCP Part No. | GF Part No. | weight (lb) | A (inch) | B (inch) | Box Qty |
|----------------|------------------|----------------|----------------|-------------|-------------|---------|
| 10 | 6910954 | 360 000 168 | 36.509 | 6.00 | 13.25 | 1 |
| 12 | 6910960 | 360 000 179 | 61.399 | 7.50 | 15.75 | 1 |