



Three Handle Tub & Shower Fittings



Features:

- Compression stems
- Body cast of high copper content brass
- Exposed parts have heavy chrome plated finish
- Working parts can be easily replaced
- 2.5 gpm (9.5 L/min) maximum showerhead @ 80 psi
- 1/2" I.P.S. or 1/2" nominal copper sweat connections
- 8" centers with sliding sleeve escutcheons
- ADA compliant metal handles operate with less than 5 lbs. of force
- Three valve with center diverter
- Zinc die cast tub spout

Standards & Certifications:

- ANSI/ASME A112.18.1M
- ANSI A117.1 (ADA)
- CSA B125

Catalog Numbers:

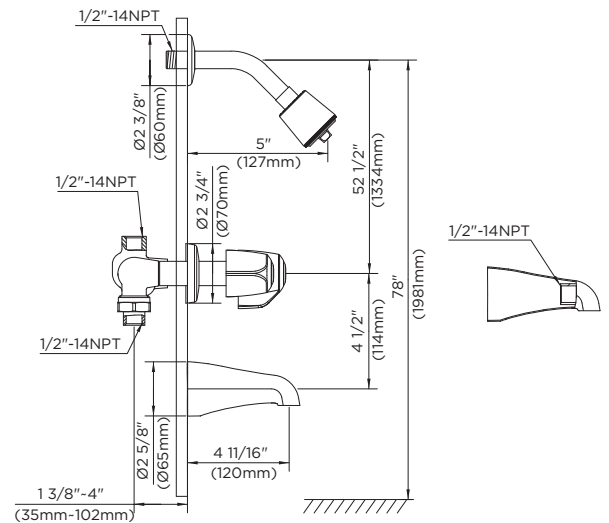
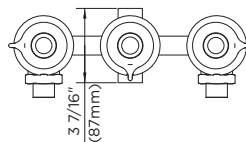
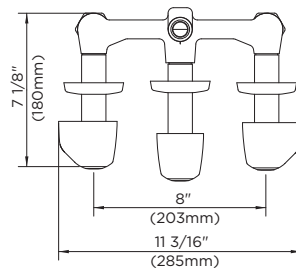
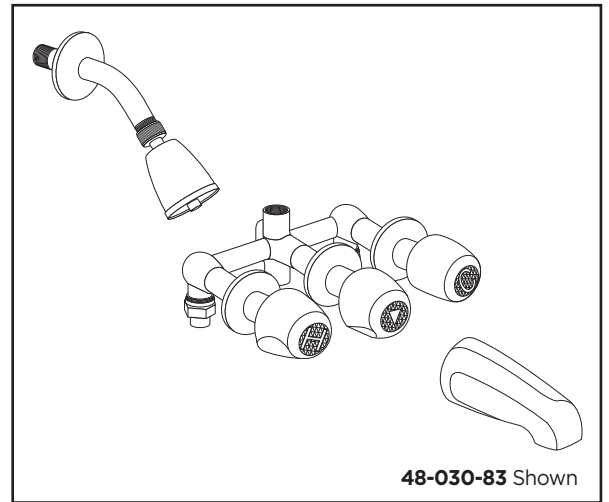
- 48-030-83** IPS/Sweat (Chrome), Metal Handles
- 07-48-030-83** IPS/Sweat (Chrome), Metal Fluted Handles
- 48-031-83** Sweat (Chrome), Metal Handles
- 48-031-81-83** Sweat (Chrome), Metal Handles
- 07-48-031-83** Sweat (Chrome), Metal Fluted Handles
- 07-48-031-81-83** Sweat (Chrome), Metal Fluted Handles

Prefixes Available:

07- Metal Fluted Handles

Suffixes Available:

-83 Sliding Sleeve Escutcheon



| | |
|--------------------|--|
| Job Name | |
| Date | |
| Model Specified | |
| Quantity | |
| Customer | |
| Contractor | |
| Architect/engineer | |