

**SUBMITTAL DRAWING**

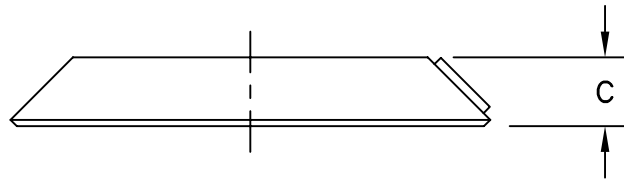
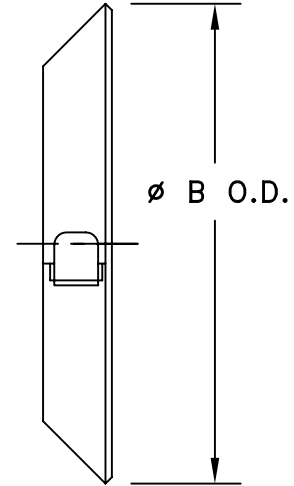
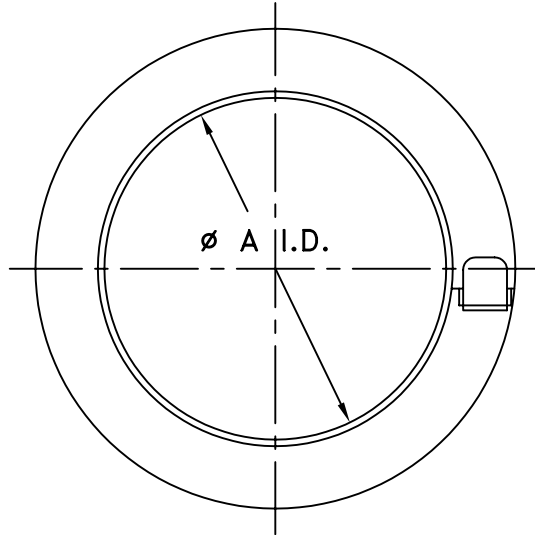
DATE: 005/03/05

SUBMITTED BY:

JOB NAME: \_\_\_\_\_  
 LOCATION: \_\_\_\_\_  
 ARCHITECT: \_\_\_\_\_  
 ENGINEER: \_\_\_\_\_  
 CONTRACTOR: \_\_\_\_\_

**Type B Gas Vent**  
 ADJUSTABLE STORM COLLAR  
 3"-18" DIAMETER

DRAWING #: B4-7



PART NO.	FOR USE WITH		$\phi A$	$\phi B$	HEIGHT C
	CONDUCTOR	TRANSITE			
3CSC	3"	~	3"	5"	1"
4CSC	4"	~	4"	6"	1"
4TSC	~	4"	4-1/2"	6-1/2"	1"
5CSC	5"	~	5"	7"	1"
6CSC	6"	~	6"	8"	1"
7CSC	7"	6"	7"	9"	1"
12CSC	12"	~	12"	14"	1"
14CSC	14"	~	14"	16"	1"
16CSC	16"	~	16"	20"	1"
18CSC	18"	~	18"	22"	1"



**• MATERIAL**

SIZES 3"-12": 28 GA. GALVANIZED STEEL  
 SIZES 14"-18": 26 GA. GALVANIZED STEEL