

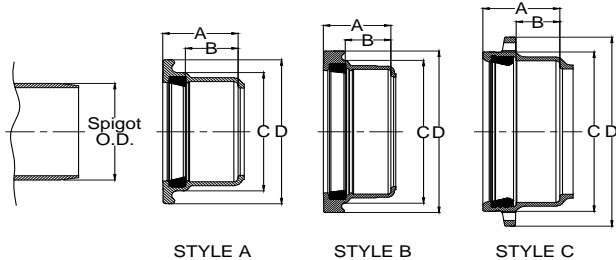
HARCO DUCTILE IRON IPS GASKETED FITTINGS

DESIGN DATA

Applicable Standards:

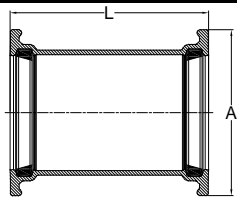
Ductile Iron: ASTM A536, Grade 65 - 45 - 12, 80 - 55 - 06
 Joints: ASTM D-3139; AWWA C153
 Gaskets: ASTM F477; SBR Std, EPDM & Nitrile avail
 Pressure Rating: 350psi per AWWA C153
 Coatings: Bituminous, AWWA C153, Standard
 Cement Lining, AWWA C153
 Coal Tar Epoxy, AWWA C210
 Fusion Bond Epoxy, AWWA C116
 Protecto 401

BELL SPECIFICATIONS



SIZE	A	B	C	D	Spigot O.D.	STYLE
1½	2.6	1.7	2.9	4.6	1.9	A
2	2.8	1.7	3.4	5.2	2.4	A
2½	2.8	1.7	4.0	5.7	2.9	A
3	3.0	1.7	4.8	6.5	3.5	A
4	3.9	2.8	5.8	7.5	4.5	A
5	4.2	3.0	6.8	8.6	5.6	A
6	4.4	3.1	8.1	9.9	6.6	A
8	5.0	3.5	10.3	12.0	8.6	A
10	5.8	4.1	12.7	14.8	10.8	B
12	6.1	4.1	14.9	17.0	12.8	B
14	7.3	4.1	17.6	20.9	15.3	C
16	7.8	4.6	19.7	23.3	17.4	C

REPAIR COUPLING (Knock-On)

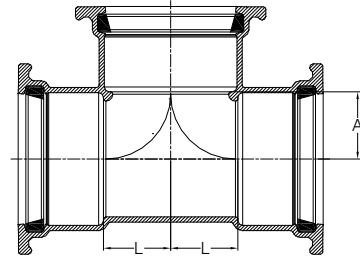


SIZE	PART #	A	L	WT (approx)
1½	80040	4.6	8.0	5.0
2	80140	5.2	8.0	5.2
2½	80240	5.7	8.5	6.3
3	80340	6.5	9.0	8.8
4	80440	7.5	9.0	11.3
5	80540	8.6	11.0	16.3
6	80640	9.8	12.0	22.0

REPAIR COUPLING (Knock-On) (continued)

SIZE	PART #	A	L	WT (approx)
8	80840	12.0	13.0	32.4
10	81040	14.8	15.0	56.7
12	81240	17.0	15.0	70.9
14	81440MJ	20.9	15.0	110
16	81640MJ	23.3	15.0	123
18	81840MJ			

TEE (G x G x G)



SIZE	PART #	A	L	WT (approx)
1½ x 1½ x 1½	8000000	1.1	1.1	6.4
2 x 2 x 2	8010101	1.4	1.4	8.4
2 x 2 x 2½	8010102	1.4	1.6	8.9
2 x 2 x 3	8010103	1.5	1.8	10.2
2½ x 2½ x 2	8020201	1.6	1.4	9.1
2½ x 2½ x 2½	8020202	1.6	1.6	10.0
2½ x 2½ x 3	8020203	1.6	2.1	11.6
3 x 2½ x 2½	8030202	1.6	2.0	11.1
3 x 3 x 2	8030301	2.0	1.4	11.7
3 x 3 x 2½	8030302	2.0	1.6	12.2
3 x 3 x 3	8030303	2.0	2.0	13.8
4 x 4 x 2	8040401	2.5	1.4	16.3
4 x 4 x 2½	8040402	2.5	1.6	16.7
4 x 4 x 3	8040403	2.5	2.0	18.4
4 x 4 x 4	8040404	2.5	2.5	21.5
6 x 6 x 2	8060601	3.5	1.3	24.6
6 x 6 x 2½	8060602	3.5	1.6	25.5
6 x 6 x 3	8060603	3.5	2.0	27.6
6 x 6 x 4	8060604	3.5	2.5	30.8
6 x 6 x 6	8060606	3.5	3.5	37.2
8 x 8 x 3	8080803	4.6	2.0	39.1
8 x 8 x 4	8080804	4.6	2.5	43.7
8 x 8 x 6	8080806	4.5	3.5	49.8
8 x 8 x 8	8080808	4.5	4.5	59.3
10 x 10 x 4	8101004	5.7	2.5	67.6
10 x 10 x 6	8101006	5.6	3.5	76.4
10 x 10 x 8	8101008	5.6	4.6	86.4
10 x 10 x 10	8101010	5.6	5.6	105.4
12 x 12 x 6	8121206	6.7	3.5	96.0
12 x 12 x 8	8121208	6.7	4.6	107.4
12 x 12 x 12	8121212	6.7	6.7	141.3
14 x 14 x 14	8141414	7.8	7.8	286.4
16 x 16 x 16	8161616	9.1	9.1	335.3
18 x 18 x 18	8181818MJ	from	SIGMA	435.0

Notes:

- All lay lengths & weights are approximate and subject to change without notice
- Fabricated fitting configurations may vary

Bell & Spigot Specification Note:

- 1½" – 12": Bells and Spigots are IPS size
- 14" – 18": Bells and Spigots are Ductile Iron Pipe Size (DIPS) for AWWA C905 PVC Pipe or Ductile Iron Pipe

Call For Other Sizes, Configurations & Gasket Materials



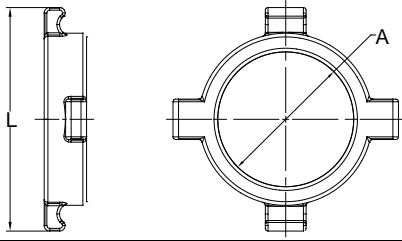
THE HARRINGTON CORPORATION

P.O. BOX 10335 • LYNCHBURG, VIRGINIA 24506 • 3721 COHEN PLACE • LYNCHBURG, VIRGINIA 24501
 PHONE: (434) 845-7094 • FAX: (434) 845-8562 • E-MAIL: sales@harcofittings.com • WEB: www.harcofittings.com

HARCO DUCTILE IRON IPS GASKETED FITTINGS

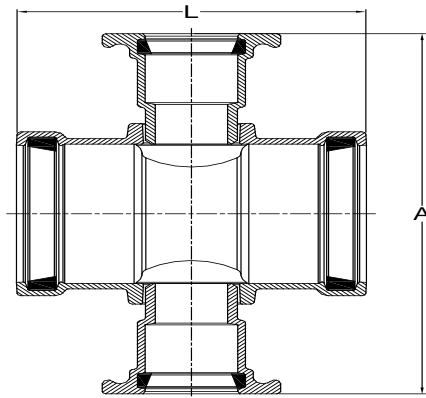
DESIGN DATA

CROSSOVER RING



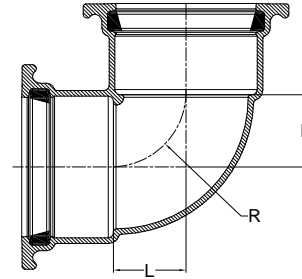
SIZE	PART #	A	L	WT (approx)
3	82103	3.6	6.6	3.1
4	82104	4.6	7.7	4.6
6	82106	6.7	10.0	7.5

CROSS (G x G x G x G)



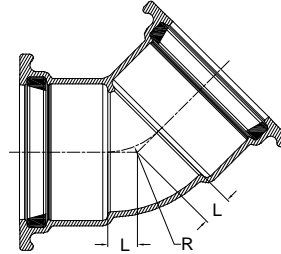
SIZE	PART #	A	L	WT (approx)
2½ x 2½ x 1½ x 1½	802150303	14.2	6.5	16
2½ x 2½ x 2 x 2	802150404	13.3	6.5	17
3 x 3 x 2 x 2	803150404	12.6	8.5	21
3 x 3 x 2½ x 2½	803150505	14.6	9.0	24
4 x 4 x 2 x 2	804150404	14.3	10.9	21.7
4 x 4 x 2½ x 2½	804150505	15.7	10.9	22.4
4 x 4 x 3 x 3	804150606	16.2	10.9	22.3
6 x 6 x 2 x 2	806150404	15.7	10.2	40
6 x 6 x 2½ x 2½	806150505	17.7	10.2	41
6 x 6 x 3 x 3	806150606	18.3	11.8	44
8 x 8 x 2 x 2	808150404	18.7	12.0	51
8 x 8 x 2½ x 2½	808150505	19.8	12.0	54
8 x 8 x 3 x 3	808150606	20.4	12.0	57
10 x 10 x 2 x 2	810150404	20.8	12.6	71
10 x 10 x 2½ x 2½	810150505	21.9	12.6	73
10 x 10 x 3 x 3	810150606	22.6	12.6	76
12 x 12 x 2 x 2	812150404	22.0	13.2	79
12 x 12 x 2½ x 2½	812150505	24.0	13.2	82
12 x 12 x 3 x 3	812150606	24.6	13.2	85

90° BEND (G x G) (¼ Bend)



SIZE	PART #	L	R	WT (approx)
1½	80020	1.1	1.1	4.4
2	80120	1.4	1.4	5.9
2½	80220	1.6	1.6	7.1
3	80320	2.0	2.0	10.2
4	80420	2.5	2.5	15.1
6	80620	3.5	3.5	26.7
8	80820	v4.5	4.5	42.0
10	81020	5.6	5.6	67.0
12	81220	6.7	6.7	99.0
14	81420	7.8	7.8	164.7
16	81620	9.0	9.0	203.2
18	81820			482.0

45° BEND (G x G) (⅛ Bend)



SIZE	PART #	L	R	WT (approx)
1½	80022	1.9	1.9	7.5
2	80122	0.6	1.5	5.4
2½	80222	0.7	1.7	6.6
3	80322	0.9	2.2	8.6
4	80422	1.1	2.7	13.3
6	80622	1.5	3.6	22.6
8	80822	1.9	4.7	35.1
10	81022	2.2	5.4	55.4
12	81222	2.6	6.4	73.1
14	81422	3.3	8.1	161.4
16	81622	3.8	9.0	203.8
18	81822			209.0

Notes:

- All lay lengths & weights are approximate and subject to change without notice
- Fabricated fitting configurations may vary

Call For Other Sizes, Configurations & Gasket Materials

Bell & Spigot Specification Note:

- 1½" – 12": Bells and Spigots are IPS size
- 14" – 18": **Bells and Spigots are Ductile Iron Pipe Size (DIPS) for AWWA C905 PVC Pipe or Ductile Iron Pipe**



THE HARRINGTON CORPORATION

P.O. BOX 10335 • LYNCHBURG, VIRGINIA 24506 • 3721 COHEN PLACE • LYNCHBURG, VIRGINIA 24501
 PHONE: (434) 845-7094 • FAX: (434) 845-8562 • E-MAIL: sales@harcofittings.com • WEB: www.harcofittings.com

D120180411