

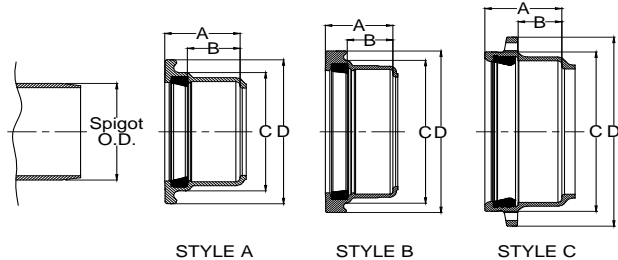
HARCO DUCTILE IRON IPS GASKETED FITTINGS

DESIGN DATA

Applicable Standards:

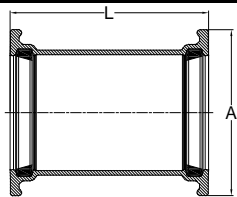
Ductile Iron: ASTM A536, Grade 65 - 45 - 12, 80 - 55 - 06
 Joints: ASTM D-3139; AWWA C153
 Gaskets: ASTM F477; SBR Std, EPDM & Nitrile avail
 Pressure Rating: 350psi per AWWA C153
 Coatings: Bituminous, AWWA C153, Standard
 Cement Lining, AWWA C153
 Coal Tar Epoxy, AWWA C210
 Fusion Bond Epoxy, AWWA C116
 Protecto 401

BELL SPECIFICATIONS



SIZE	A	B	C	D	Spigot O.D.	STYLE
1½	2.6	1.7	2.9	4.6	1.9	A
2	2.8	1.7	3.4	5.2	2.4	A
2½	2.8	1.7	4.0	5.7	2.9	A
3	3.0	1.7	4.8	6.5	3.5	A
4	3.9	2.8	5.8	7.5	4.5	A
5	4.2	3.0	6.8	8.6	5.6	A
6	4.4	3.1	8.1	9.9	6.6	A
8	5.0	3.5	10.3	12.0	8.6	A
10	5.8	4.1	12.7	14.8	10.8	B
12	6.1	4.1	14.9	17.0	12.8	B
14	7.3	4.1	17.6	20.9	15.3	C
16	7.8	4.6	19.7	23.3	17.4	C

REPAIR COUPLING (Knock-On)

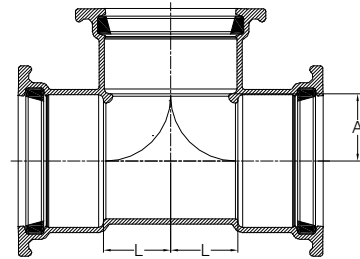


SIZE	PART #	A	L	WT (approx)
1½	80040	4.6	8.0	5.0
2	80140	5.2	8.0	5.2
2½	80240	5.7	8.5	6.3
3	80340	6.5	9.0	8.8
4	80440	7.5	9.0	11.3
5	80540	8.6	11.0	16.3
6	80640	9.8	12.0	22.0

REPAIR COUPLING (Knock-On) (continued)

SIZE	PART #	A	L	WT (approx)
8	80840	12.0	13.0	32.4
10	81040	14.8	15.0	56.7
12	81240	17.0	15.0	70.9
14	81440MJ	20.9	15.0	110
16	81640MJ	23.3	15.0	123
18	81840MJ			

TEE (G x G x G)



SIZE	PART #	A	L	WT (approx)
1½ x 1½ x 1½	8000000	1.1	1.1	6.4
2 x 2 x 2	8010101	1.4	1.4	8.4
2 x 2 x 2½	8010102	1.4	1.6	8.9
2 x 2 x 3	8010103	1.5	1.8	10.2
2½ x 2½ x 2	8020201	1.6	1.4	9.1
2½ x 2½ x 2½	8020202	1.6	1.6	10.0
2½ x 2½ x 3	8020203	1.6	2.1	11.6
3 x 2½ x 2½	8030202	1.6	2.0	11.1
3 x 3 x 2	8030301	2.0	1.4	11.7
3 x 3 x 2½	8030302	2.0	1.6	12.2
3 x 3 x 3	8030303	2.0	2.0	13.8
4 x 4 x 2	8040401	2.5	1.4	16.3
4 x 4 x 2½	8040402	2.5	1.6	16.7
4 x 4 x 3	8040403	2.5	2.0	18.4
4 x 4 x 4	8040404	2.5	2.5	21.5
6 x 6 x 2	8060601	3.5	1.3	24.6
6 x 6 x 2½	8060602	3.5	1.6	25.5
6 x 6 x 3	8060603	3.5	2.0	27.6
6 x 6 x 4	8060604	3.5	2.5	30.8
6 x 6 x 6	8060606	3.5	3.5	37.2
8 x 8 x 3	8080803	4.6	2.0	39.1
8 x 8 x 4	8080804	4.6	2.5	43.7
8 x 8 x 6	8080806	4.5	3.5	49.8
8 x 8 x 8	8080808	4.5	4.5	59.3
10 x 10 x 4	8101004	5.7	2.5	67.6
10 x 10 x 6	8101006	5.6	3.5	76.4
10 x 10 x 8	8101008	5.6	4.6	86.4
10 x 10 x 10	8101010	5.6	5.6	105.4
12 x 12 x 6	8121206	6.7	3.5	96.0
12 x 12 x 8	8121208	6.7	4.6	107.4
12 x 12 x 12	8121212	6.7	6.7	141.3
14 x 14 x 14	8141414	7.8	7.8	286.4
16 x 16 x 16	8161616	9.1	9.1	335.3
18 x 18 x 18	8181818MJ	from	SIGMA	435.0

Notes:

- All lay lengths & weights are approximate and subject to change without notice
- Fabricated fitting configurations may vary

Bell & Spigot Specification Note:

- 1½" - 12": Bells and Spigots are IPS size
- 14" - 18": Bells and Spigots are Ductile Iron Pipe Size (DIPS) for AWWA C905 PVC Pipe or Ductile Iron Pipe

Call For Other Sizes, Configurations & Gasket Materials



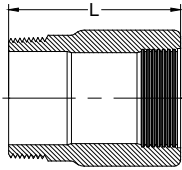
THE HARRINGTON CORPORATION

P.O. BOX 10335 • LYNCHBURG, VIRGINIA 24506 • 3721 COHEN PLACE • LYNCHBURG, VIRGINIA 24501
 PHONE: (434) 845-7094 • FAX: (434) 845-8562 • E-MAIL: sales@harcofittings.com • WEB: www.harcofittings.com

HARCO DUCTILE IRON IPS GASKETED FITTINGS

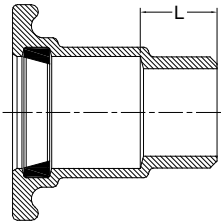
DESIGN DATA

ADAPTER (MIPT x Female ACME)



SIZE	PART #	L	WT (approx)
2 x 1	872-204	3	3
2 x 1¼	872-205	3	3
2 x 1½	872-206	3	2

MALE ADAPTER (Bell x MNPT)

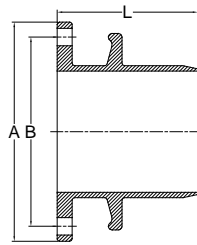


SIZE	PART #	L	WT (approx)
1½ x 1½	80070	1.6	2.8
2 x 1½	80172	1.6	3
2 x 2	80170	1.7	3.5
2½ x 2	80272	1.7	3
2½ x 2½	80270	2.0	4.8
3 x 3	80370	2.0	6.3
4 x 4	80470	1.7	7.5

FLANGE SPECS

SIZE	# HOLES	DIAMETER BOLTS	BOLT CIRCLE
3	4	5/8	6
4	8	5/8	7-1/2
6	8	3/4	9-1/2
8	8	3/4	11-3/4
10	12	7/8	14-1/4
12	12	7/8	17

SPIGOT x FLANGE ADAPTER

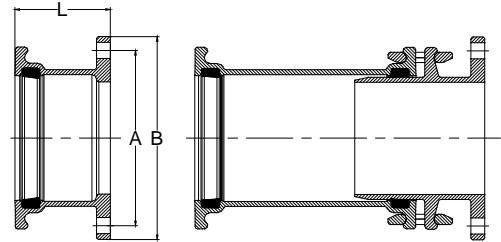


SIZE	PART #	A	B	L	WT (approx)
3	80360	7.5	6.0	5.4	10.9
4	80460	9.0	7.5	6.4	15.1
6	80660	11.0	9.5	7.1	21.8

SPIGOT x FLANGE ADAPTER (continued)

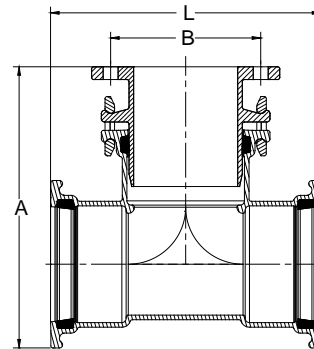
SIZE	PART #	A	B	L	WT (approx)
8	80860	13.5	11.8	7.5	30.9
10	81060	16.0	14.3	12.1	64.3
12	81260	19.0	17.0	12.4	87.1

FLANGE x BELL ADAPTER



SIZE	PART #	A	B	L	STYLE	WT (approx)
3 x 3	80360FB	6.0	7.5	3.8	B	10.3
3 x 4	80360-04	6.0	7.5	7.9	B	15.2
4 x 4	80460FB	7.5	9.0	4.7	B	14.5
4 x 6	80460-06	7.5	9.0	8.9	B	23.8
6 x 6	80660FB	9.5	11.0	5.2	B	21.1
6 x 8	80660-08	9.5	11.0	10.0	B	33.4
8 x 8	80860FB	11.8	13.5	5.7	B	32.7
8 x 10	80860-10	11.8	13.5	10.8	B	57.5
10 x 10	81060FB	14.3	16.0	7.9	A	54.6
10 x 12	81060-12	14.3	16.0	11.7	B	76.0
12 x 12	81260FB	17.0	19.0	8.0	A	74.2
14 x 14	81460	18.8	21.0	10.6	A	139.7
16 x 16	81660	21.3	23.5	11.3	A	159.8
18 x 18	81860MJ					240

FLANGE x OUTLET TEE (B x B x Flange)



SIZE	PART #	A	B	L	WT (approx)
3 x 3	80300F	11.4	6.9	10.0	17.9
4 x 4	80400F	13.9	7.5	12.8	38.7
6 x 4	80601F	15.6	7.5	13.8	47.2
6 x 6	80600F	16.6	9.5	15.8	61.2
8 x 6	80801F	18.7	9.5	16.9	73.9
8 x 8	80800F	19.0	11.8	19.0	92.3
10 x 6	81002F	21.1	9.5	18.6	100.4
10 x 8	81001F	20.7	11.8	21.8	119.4

Notes:

- All lay lengths & weights are approximate and subject to change without notice
- Fabricated fitting configurations may vary

Call For Other Sizes, Configurations & Gasket Materials

Bell & Spigot Specification Note:

- 1½" – 12": Bells and Spigots are IPS size
- 14" – 18": **Bells and Spigots are Ductile Iron Pipe Size (DIPS) for AWWA C905 PVC Pipe or Ductile Iron Pipe**



THE HARRINGTON CORPORATION

P.O. BOX 10335 • LYNCHBURG, VIRGINIA 24506 • 3721 COHEN PLACE • LYNCHBURG, VIRGINIA 24501
 PHONE: (434) 845-7094 • FAX: (434) 845-8562 • E-MAIL: sales@harcofittings.com • WEB: www.harcofittings.com

D120180411