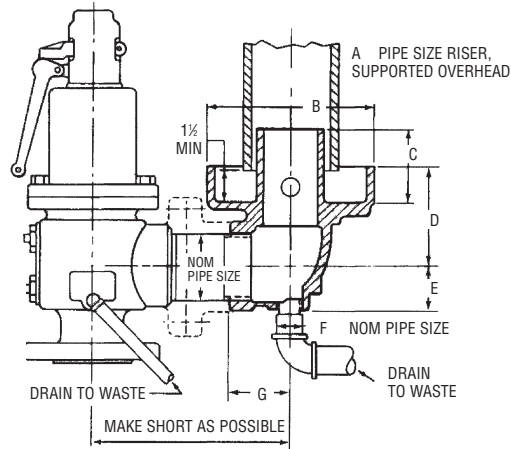


# DRIP PAN ELBOWS



Cast Iron Drip Pan Elbows for steam service. Installation for power boilers and unfired pressure vessel service.

## DIMENSIONS

Size	A	B	C	D	E	F	G	Wt. Lbs.
3/4-1"	1 1/2	3 3/4	1 1/4	2 3/4	1 1/2	3/4	1 1/2	2
1 1/4-1 1/2"	2 1/2	5 1/2	2 1/2	4 1/4	1 1/4	3/4	2 1/2	5
2"	3	6 1/4	2 3/4	3 3/4	1 3/8	1/2	2 3/4	7
2 1/2"	3 3/4	7 3/4	3	4 1/4	1 5/8	3/4	2 1/4	11
3"	4	8	3 1/2	4 3/4	2 1/4	3/4	3 1/4	19
4"	6	9 3/4	4 1/2	5 3/4	2 3/4	3/4	3 3/4	27
6"	8	12 3/4	6 3/4	7 3/4	4 3/4	3/4	8	80
8"	10	16 1/2	7 3/4	9 3/4	5 3/4	1	10 3/4	150
10"	FABRICATED STEEL—CONSULT FACTORY							

6" and 8" elbows have integral 125 lb. ANSI flange.