

PRECISION PLUMBING PRODUCTS



Division of JL industries, inc.
802 SE 199th Avenue
Portland, Oregon 97233 • (503) 256-4010
FAX: (503) 253-8165

"Specify with confidence - Install with pride."®

Prime Time Series Electronic Trap Priming System Installation & Maintenance Instructions

UL Listed
UPC Listed
125 PSI Max.



Models **PT-4 through 2130 & PTS-4 through 2130.**

DESCRIPTION:

Prime Time is an electronically activated trap priming device. The system functions pre-selected sequence, delivering potable water to floor drains through a restricted manifold. (CAUTION: THIS UNIT MUST ALWAYS BE INSTALLED ABOVE ALL DRAINS IT IS INTENDED TO SERVE. ANY BACK PRESSURE WILL ENGAGE THE ATMOSPHERIC VACUUM BREAKER CAUSING WATER TO BE RELEASED INSIDE THE CONTROL CABINET.)

OPERATION:

A pre-set timer energizes a normally closed electronic solenoid valve. Potable water under system pressure enters the supply manifold and is distributed via compression fittings to the designated floor drains. The pre-set timer then de-energizes the solenoid allowing it to close until the next operational cycle.

INSTALLATION:

- 1) Anchor flush mount cabinet (PT Series) to studs with #14 wood screws. Remove cover and anchor surface mount cabinet (PTS Series) to wall using 1/4" fasteners designed for the surface in question. Device must be installed a minimum of 12" above flood level of device being served. (CAUTION: ENSURE MANIFOLD AND BOX ARE INSTALLED LEVEL AND SQUARE.)
- 2) Installer should incorporate a means of disconnect from the supply mains in accordance with local wiring rules. Disconnect during installation.
- 3) Remove cover screws from the composite timer control box containing the test switch and circuit breaker and make a three wire electrical connection. Black is "hot", white is "neutral" and green is "ground". (DANGER: THIS IS A HIGH VOLTAGE CONNECTION). All wiring must be in accordance with local and national electrical codes.
- 4) Connect a fresh water line to the 3/4" NPT inlet ball valve.
- 5) Connect appropriately sized (3/8" or 1/2" ID) copper supply lines to the manifold. (CAUTION: USE TWO WRENCHES WHEN MAKING COMPRESSION FITTING CONNECTIONS.) Must be installed above the finished floor. Allow one foot of elevation for every twenty feet of distance ran for floor drain make up line.
- 6) Energize the system. The primer will fire for 6 seconds upon energizing. Test for leaks by holding down the manual override button marked "Test". Make certain all make up lines are free of debris by observing water flowing into the drains during testing. Should the circuit breaker trip, reset by pushing in. Recheck wiring and voltage.

Timing/Delivery Rate:

This unit is pre-set at the factory to deliver water to the traps for 6 seconds at an interval of once every 24 hours. THIS IS ADEQUATE TO SERVE 30 FLOOR DRAINS. DO NOT RE-SET IN THE FIELD. IF YOU WISH TO ALTER THE TIMING SEQUENCE, CALL THE FACTORY. DO NOT ATTEMPT TO SERVICE THE SOLENOID VALVE. CALL THE FACTORY

WATER HAMMER
ARRESTORS

TEMPERA
ANTI-SCALD VALVES

BAC-2-BAC
MANIFOLDS

TRAP PRIMER VALVES
AND MANIFOLDS

THERMOSTATIC
MIXING VALVES

FOR MANUFACTURERS INSTRUCTION. ALWAYS DE-ENERGIZE WHEN ENTERING THE GALVANIZED TIMER CONTROL BOX.

INSTRUCTIONS PERTAINING TO A RISK OF FIRE ELECTRIC SHOCK, OR INJURY TO PERSONS

***** IMPORTANT SAFETY INSTRUCTIONS *****

***** SAVE THESE INSTRUCTIONS *****

WARNING - When using electric appliances, basic precautions should always be followed, including the following:

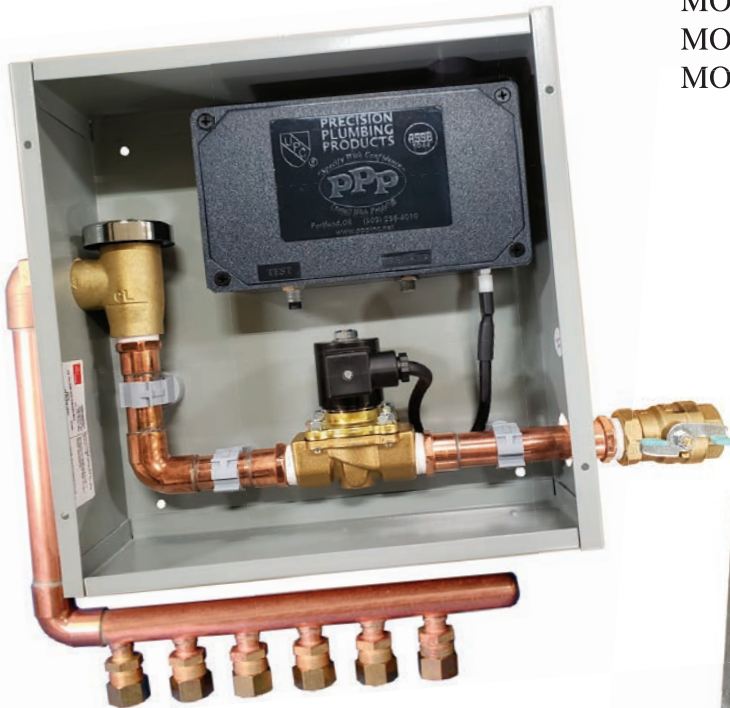
- a) Read all of the instructions before using the appliance.
- b) Do not contact moving parts.
- c) Only use attachments recommended or sold by the manufacturer
- d) Do not use outdoors.
Do not operate any appliance after the appliance malfunctions or is dropped or damaged in any manner. Return appliance to the nearest authorized service facility for examination, repair, or electrical or mechanical adjustment.
- e) For a permanently connected appliance - De-energize when the appliance is not in use and before servicing or cleaning.
- f) For a grounded appliance - Connect to a properly grounded service only.
See grounding instructions.

GROUNDING INSTRUCTIONS:

This appliance must be connected to the grounded metal stud inside the cabinet.

PRIME-TIME SURFACE MOUNT

Cabinet Size: 12" x 12" x 4"



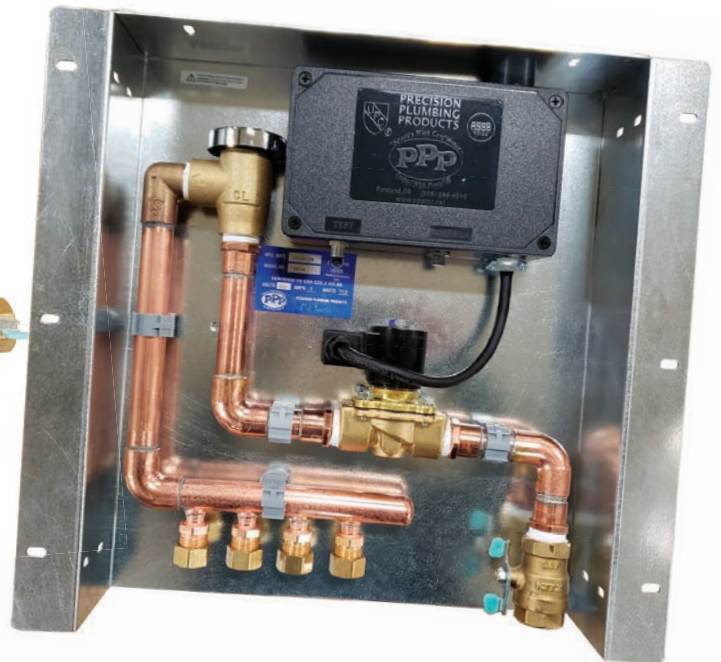
PRIME-TIME FLUSH MOUNT

Cabinet Size: Inside Dimensions

MODELS: PT-4 - PT-12 14"W x 16"L x 3 3/8"D

MODEL: PT-1320 20 1/2"W x 16 1/2"L x 3 3/8"D

MODEL: PT-2130 30 1/2"W x 20 1/2"L x 3 3/8"D



WATER HAMMER
ARRESTORS

TEMPERA
ANTI-SCALD VALVES

BAC-2-BAC
MANIFOLDS

TRAP PRIMER VALVES
AND MANIFOLDS

THERMOSTATIC
MIXING VALVES