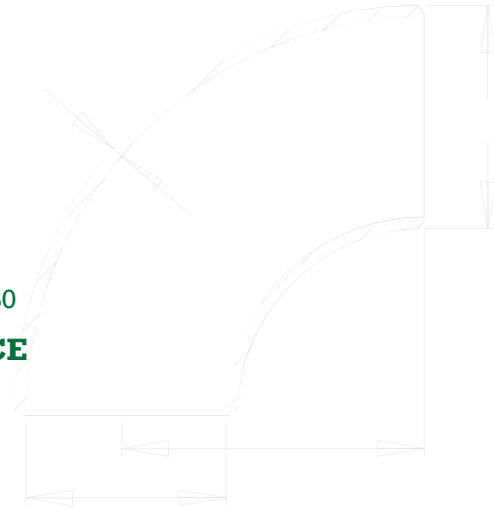
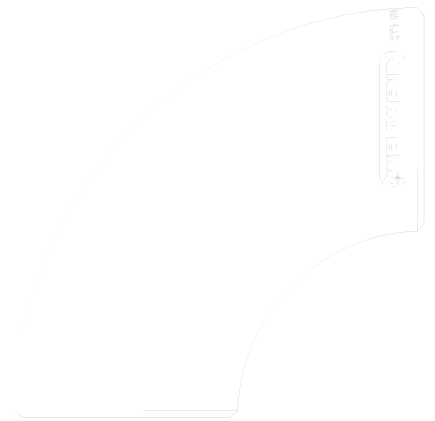
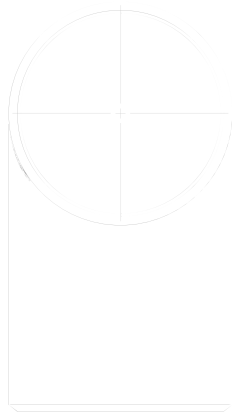
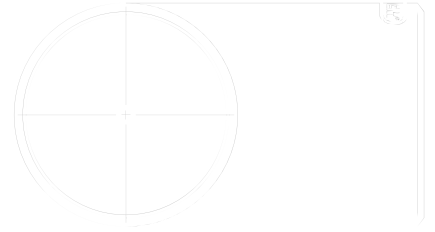
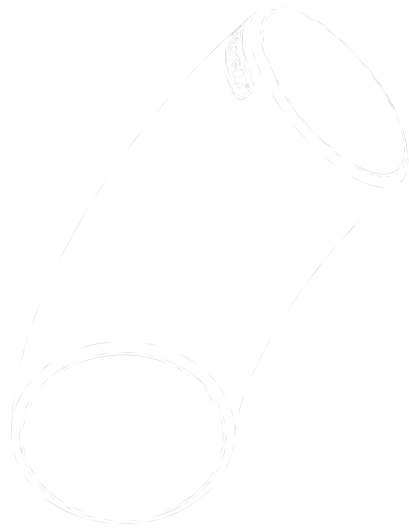




**Carbon Steel Weld Fitting & Weld Flange
Products for Piping Construction**

**SIXTY-THIRD
EDITION**

Printed in U.S.A.



WELDBEND CORPORATION

6600 SOUTH HARLEM AVENUE, ARGO, IL 60501-1930

SALES

TEL: 708/594-1700

FAX: 708/458-0106

GENERAL OFFICE

TEL: 773/582-3500

FAX: 773/582-7621

www.weldbend.com

info@weldbend.com

orders@weldbend.com

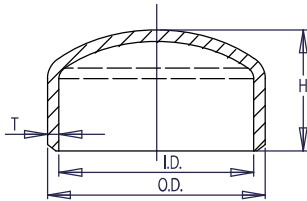
quotes@weldbend.com

customer.service@weldbend.com

TABLE OF CONTENTS

	PAGE
WELDBEND...TODAY.....	6
THE WELDBEND POLICY	21
ORDERING INFORMATION	22
TERMS AND CONDITIONS	23
FITTINGS	25
90° ELBOWS — Long Radius [Schedule: STD, XS, 40, 80, 160, XXS]	26
90° ELBOWS — Short Radius [Schedule: STD, XS, 40, 80, 160, XXS]	29
90° REDUCING ELBOWS — [Schedule: STD, XS, 40, 80]	32
90° ELBOWS — 3R [Schedule: STD, XS, 40, 80]	36
45° ELBOWS — Long Radius [Schedule: STD, XS, 40, 80, 160, XXS]	38
45° ELBOWS — 3R [Schedule: STD, XS, 40, 80]	41
180° RETURN BENDS — Long Radius [Schedule: STD, XS, 40, 80, 160, XXS]	43
180° RETURN BENDS — Short Radius [Schedule: STD, XS, 40, 80, 160, XXS]	46
STRAIGHT TEES — [Schedule: STD, XS, 40, 80, 160, XXS]	49
REDUCING TEES — [Schedule: STD, XS, 40, 80, 160, XXS]	52
CONCENTRIC AND ECCENTRIC REDUCERS — [Schedule: STD, XS, 40, 80, 160, XXS]	62
CAPS — [Schedule: STD, XS, 40, 80, 160, XXS]	76
LAP JOINT STUB ENDS — [Schedule: STD, XS, 40, 80, 160, XXS]	79
BOX QUANTITIES	82
FLANGES	84
CLASS 125	85
CLASS 150	86
CLASS 300	88
CLASS 600	90
CLASS 900	92
CLASS 1500	94
CLASS 2500	96
REDUCING SLIP-ON AND THREADED FLANGES — ALL CLASSES	98
CALCULATED FLANGE WEIGHTS	99
FLANGE PACKAGING	105
TECHNICAL DATA INDEX	106
RING TYPE JOINT FACING DIMENSIONS	148

SCHEDULE STD

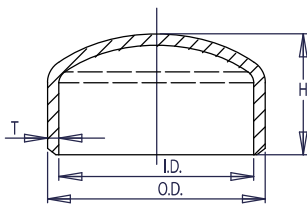


WELDBEND NOTES

1. Conforms to ASME B16.9 & ASTM A234 WPB.
 2. All dimensions are in inches.
 3. For bevel detail see page 107.
 4. For dimensional tolerances see page 108.
 5. For sizes larger than 48" please call.
 6. All weights are in pounds and approximated or estimated.
 7. The shape of the cap is 2:1 ellipsoidal and conforms to the shape requirements given in the ASME Boiler and Pressure Vessel Code.
- * This size and thickness does not correspond to any pipe schedule number.

Pipe Size	Outside Diameter	Inside Diameter	Wall Thickness	Height	Pipe Schedule Number	Approx. Weight in Pounds
	O.D.	I.D.	T	H		
1/2	0.84	0.622	0.109	1.00	40	0.08
3/4	1.05	0.824	0.113	1.00	40	0.14
1	1.32	1.049	0.133	1.50	40	0.21
1 1/4	1.66	1.380	0.140	1.50	40	0.33
1 1/2	1.90	1.610	0.145	1.50	40	0.54
2	2.38	2.067	0.154	1.50	40	0.80
2 1/2	2.88	2.469	0.203	1.50	40	1.00
3	3.50	3.068	0.216	2.00	40	1.70
3 1/2	4.00	3.548	0.226	2.50	40	2.30
4	4.50	4.026	0.237	2.50	40	2.80
5	5.56	5.047	0.258	3.00	40	4.60
6	6.62	6.065	0.280	3.50	40	6.90
8	8.62	7.981	0.322	4.00	40	11.80
10	10.75	10.020	0.365	5.00	40	20.80
12	12.75	12.000	0.375	6.00	*	30.30
14	14.00	13.250	0.375	6.50	30	36.50
16	16.00	15.250	0.375	7.00	30	43.50
18	18.00	17.250	0.375	8.00	*	57.00
20	20.00	19.250	0.375	9.00	20	75.70
24	24.00	23.250	0.375	10.50	20	101.00
30	30.00	29.250	0.375	10.50	*	137.00
36	36.00	35.250	0.375	10.50	*	175.00
42	42.00	41.250	0.375	12.00	*	229.00
48	48.00	47.250	0.375	13.50	*	350.00

SCHEDULE XS



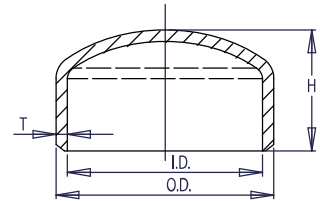
WELDBEND NOTES

1. Conforms to ASME B16.9 & ASTM A234 WPB.
 2. All dimensions are in inches.
 3. For bevel detail see page 107.
 4. For dimensional tolerances see page 108.
 5. For sizes larger than 48" please call.
 6. All weights are in pounds and approximated or estimated.
 7. The shape of the cap is 2:1 ellipsoidal and conforms to the shape requirements given in the ASME Boiler and Pressure Vessel Code.
- * This size and thickness does not correspond to any pipe schedule number.

Pipe Size	Outside Diameter	Inside Diameter	Wall Thickness	Height	Pipe Schedule Number	Approx. Weight in Pounds
	O.D.	I.D.	T	H		
1/2	0.84	0.546	0.147	1.00	80	0.10
3/4	1.05	0.742	0.154	1.00	80	0.16
1	1.32	0.957	0.179	1.50	80	0.28
1 1/4	1.66	1.278	0.191	1.50	80	0.48
1 1/2	1.90	1.500	0.200	1.50	80	0.67
2	2.38	1.939	0.218	1.50	80	0.92
2 1/2	2.88	2.323	0.276	1.50	80	1.30
3	3.50	2.900	0.300	2.00	80	2.10
3 1/2	4.00	3.364	0.318	2.50	80	3.00
4	4.50	3.826	0.337	2.50	80	3.50
5	5.56	4.813	0.375	3.00	80	5.80
6	6.62	5.761	0.432	3.50	80	9.30
8	8.62	7.625	0.500	4.00	80	16.00
10	10.75	9.750	0.500	5.00	60	26.00
12	12.75	11.750	0.500	6.00	*	38.00
14	14.00	13.000	0.500	6.50	*	47.00
16	16.00	15.000	0.500	7.00	40	57.00
18	18.00	17.000	0.500	8.00	*	78.00
20	20.00	19.000	0.500	9.00	30	100.00
24	24.00	23.000	0.500	10.50	*	145.00
30	30.00	29.000	0.500	10.50	20	634.00
36	36.00	35.000	0.500	10.50	20	913.00
42	42.00	41.000	0.500	12.00	*	1300.00
48	48.00	47.000	0.500	13.50	*	1675.00

SCHEDULE 40

Pipe Size	Outside Diameter	Inside Diameter	Wall Thickness	Height	Pipe Schedule Number	Approx. Weight in Pounds
	O.D.	I.D.	T	H		
1/2	0.84	0.622	0.109	1.00	40	0.08
3/4	1.05	0.824	0.113	1.00	40	0.14
1	1.32	1.054	0.133	1.50	40	0.21
1 1/4	1.66	1.380	0.140	1.50	40	0.33
1 1/2	1.90	1.610	0.145	1.50	40	0.54
2	2.38	2.072	0.154	1.50	40	0.80
2 1/2	2.88	2.474	0.203	1.50	40	1.00
3	3.50	3.068	0.216	2.00	40	1.70
3 1/2	4.00	3.548	0.226	2.50	40	2.30
4	4.50	4.026	0.237	2.50	40	2.80
5	5.56	5.044	0.258	3.00	40	4.60
6	6.62	6.060	0.280	3.50	40	6.90
8	8.62	7.976	0.322	4.00	40	11.80
10	10.75	10.020	0.365	5.00	40	20.80
12	12.75	11.938	0.406	6.00	40	30.30
14	14.00	13.124	0.438	6.50	40	36.50
16	16.00	15.000	0.500	7.00	40	43.50
18	18.00	16.876	0.562	9.00	40	57.00
20	20.00	18.812	0.594	10.00	40	75.70
24	24.00	22.624	0.688	12.00	40	101.00



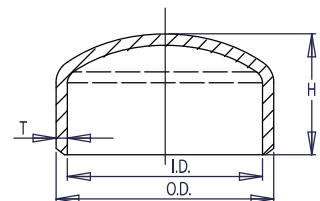
WELDBEND NOTES

1. Conforms to ASME B16.9 & ASTM A234 WPB.
2. All dimensions are in inches.
3. For bevel detail see page 107.
4. For dimensional tolerances see page 108.
5. For sizes larger than 24" please call.
6. All weights are in pounds and approximated or estimated.
7. The shape of the cap is 2:1 ellipsoidal and conforms to the shape requirements given in the ASME Boiler and Pressure Vessel Code.

FITTINGS

SCHEDULE 80

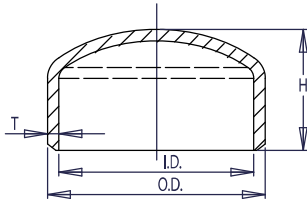
Pipe Size	Outside Diameter	Inside Diameter	Wall Thickness	Height	Pipe Schedule Number	Approx. Weight in Pounds
	O.D.	I.D.	T	H		
1/2	0.84	0.546	0.147	1.00	80	0.10
3/4	1.05	0.742	0.154	1.00	80	0.16
1	1.32	0.962	0.179	1.50	80	0.28
1 1/4	1.66	1.278	0.191	1.50	80	0.48
1 1/2	1.90	1.500	0.200	1.50	80	0.67
2	2.38	1.944	0.218	1.50	80	0.92
2 1/2	2.88	2.328	0.276	1.50	80	1.30
3	3.50	2.900	0.300	2.00	80	2.10
3 1/2	4.00	3.364	0.318	2.50	80	3.00
4	4.50	3.826	0.337	2.50	80	3.50
5	5.56	4.810	0.375	3.00	80	5.80
6	6.62	5.756	0.432	3.50	80	9.30
8	8.62	7.620	0.500	4.00	80	16.00
10	10.75	9.562	0.594	6.00	80	26.00
12	12.75	11.374	0.688	7.00	80	38.00
14	14.00	12.500	0.750	7.50	80	47.00
16	16.00	14.312	0.844	8.00	80	57.00
18	18.00	16.124	0.938	9.00	80	78.00
20	20.00	17.938	1.031	10.00	80	100.00
24	24.00	21.562	1.219	12.00	80	145.00



WELDBEND NOTES

1. Conforms to ASME B16.9 & ASTM A234 WPB.
 2. All dimensions are in inches.
 3. For bevel detail see page 107.
 4. For dimensional tolerances see page 108.
 5. All weights are in pounds and approximated or estimated.
 6. The shape of the cap is 2:1 ellipsoidal and conforms to the shape requirements given in the ASME Boiler and Pressure Vessel Code.
- * This size and thickness does not correspond to any pipe schedule number.

SCHEDULE 160



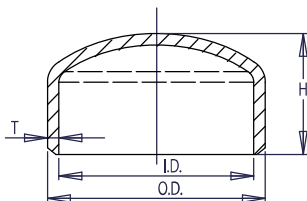
WELDBEND NOTES

1. Conforms to ASME B16.9 & ASTM A234 WPB.
2. All dimensions are in inches.
3. For bevel detail see page 107.
4. For dimensional tolerances see page 108.
5. All weights are in pounds and approximated or estimated.
6. The shape of the cap is 2:1 ellipsoidal and conforms to the shape requirements given in the ASME Boiler and Pressure Vessel Code.

Pipe Size	Outside Diameter	Inside Diameter	Wall Thickness	Height	Pipe Schedule Number	Approx. Weight in Pounds
	O.D.	I.D.	T	H		
1/2	0.84	0.464	0.188	1.00	160	0.30
3/4	1.05	0.612	0.219	1.00	160	0.30
1	1.32	0.820	0.250	1.50	160	0.40
1 1/4	1.66	1.160	0.250	1.50	160	0.50
1 1/2	1.90	1.338	0.281	1.50	160	0.60
2	2.38	1.692	0.344	1.75	160	1.30
2 1/2	2.88	2.130	0.375	2.00	160	1.80
3	3.50	2.624	0.438	2.50	160	2.90
4	4.50	3.438	0.531	3.00	160	5.90
5	5.56	4.310	0.625	3.50	160	10.00
6	6.62	5.182	0.719	4.00	160	15.00
8	8.62	6.808	0.906	5.00	160	31.00
10	10.75	8.500	1.125	6.00	160	57.00
12	12.75	10.126	1.312	7.00	160	95.00
14	14.00	11.188	1.406	7.50	160	200.00
16	16.00	12.812	1.594	8.00	160	297.00
18	18.00	14.438	1.781	9.00	160	360.00
20	20.00	16.062	1.969	10.00	160	420.00
24	24.00	19.312	2.344	12.00	160	535.00

FITTINGS

SCHEDULE XXS



WELDBEND NOTES

1. Conforms to ASME B16.9 & ASTM A234 WPB.
 2. All dimensions are in inches.
 3. For bevel detail see page 107.
 4. For dimensional tolerances see page 108.
 5. All weights are in pounds and approximated or estimated.
 6. The shape of the cap is 2:1 ellipsoidal and conforms to the shape requirements given in the ASME Boiler and Pressure Vessel Code.
- * This size and thickness does not correspond to any pipe schedule number.

Pipe Size	Outside Diameter	Inside Diameter	Wall Thickness	Height	Pipe Schedule Number	Approx. Weight in Pounds
	O.D.	I.D.	T	H		
1/2	0.84	0.252	0.294	1.00	*	0.50
3/4	1.05	0.434	0.308	1.00	*	0.75
1	1.32	0.604	0.358	1.50	*	1.00
1 1/4	1.66	0.896	0.382	1.50	*	1.50
1 1/2	1.90	1.100	0.400	1.50	*	2.50
2	2.38	1.508	0.436	1.75	*	3.00
2 1/2	2.88	1.776	0.552	2.00	*	4.00
3	3.50	2.300	0.600	2.50	*	6.00
4	4.50	3.152	0.674	3.00	*	9.00
5	5.56	4.060	0.750	3.50	*	13.50
6	6.62	4.892	0.864	4.00	*	18.00
8	8.62	6.870	0.875	5.00	*	26.00
10	10.75	8.750	1.000	6.00	140	46.00
12	12.75	10.750	1.000	7.00	120	68.00