

DIMENSIONS - ENGLISH UNITS FOR 200 CWP

NOMINAL VALVE SIZE	1	1 1/2	2	2 1/2	3	4
A FACE TO FACE	5.50	6.50	7.50	8.25	9.00	9.00
C DIAMETER OF FLANGE	4.30	5.00	6.00	7.00	7.50	9.00
D THICKNESS OF FLANGE	.50	.63	.69	.75	.81	1.00
E CENTER TO TOP	3.84	4.74	4.74	5.60	6.30	7.10
F CENTER TO BOTTOM	1.93	2.38	2.38	2.45	4.04	4.62
G REMOVAL CLEARANCE	3.37	3.62	3.62	3.56	3.62	3.98
H CENTER TO BACK	1.31	1.58	1.58	1.98	2.38	2.73
J WIDTH OF FLAT	.81	1.00	1.00	1.25	1.25	1.38
K DIAMETER OF SHANK	1.06	1.38	1.38	1.75	1.75	1.94
L HEIGHT OF FLAT	.86	1.00	1.00	1.30	1.30	1.50
M CENTER TO FITTING	2.91	3.16	3.16	3.10	3.16	3.51
N CENTER TO FITTING	1.37	1.74	1.74	2.64	3.14	3.55
P CENTER TO TOP OF PAD	2.25	2.52	3.10	3.56	3.75	4.50
Q LENGTH OF ACTUATOR PAD	2.62	3.16	3.16	3.65	3.65	6.00
WRENCH	SN-1	SN-2	SN-2	*SN-4	*SN-4	M-9
WEIGHT, LBS	10	17	21	38	55	79

DIMENSIONS - METRIC UNITS FOR 200 CWP

NOMINAL VALVE SIZE	25	40	50	65	80	100
A FACE TO FACE	140	165	191	210	229	229
C DIAMETER OF FLANGE	109	127	152	178	191	229
D THICKNESS OF FLANGE	13	16	18	19	21	25
E CENTER TO TOP	98	120	120	142	160	180
F CENTER TO BOTTOM	49	60	60	62	103	117
G REMOVAL CLEARANCE	86	92	92	90	92	101
H CENTER TO BACK	33	40	40	50	60	69
J WIDTH OF FLAT	21	25	25	32	32	35
K DIAMETER OF SHANK	27	35	35	44	44	49
L HEIGHT OF FLAT	22	25	25	33	33	38
M CENTER TO FITTING	74	80	80	79	80	89
N CENTER TO FITTING	35	44	44	67	80	90
P CENTER TO TOP OF PAD	57	64	79	90	95	114
Q LENGTH OF ACTUATOR PAD	67	80	80	93	93	152
WRENCH	SN-1	SN-2	SN-2	*SN-4	*SN-4	M-9
WEIGHT, KGS	4.5	7.7	9.5	17.2	24.9	35.8

LIST OF PARTS

REF	NAME	REQ.	MATERIAL
1	BODY	1	A126 GRB IRON
2	PLUG	1	A126 GRB IRON
3	COVER	1	A536 60-40-18 DUCTILE IRON
4	STOP COLLAR	1	ANSI 1074/1075
5	RETAINER RING	1	CARBON SPRING STEEL
6	WEATHERSEAL	1	O-RING, EPDM
7	STEM SEAL	2	O-RING, VITON-A
8	COVER SEAL	1	O-RING, VITON-A
9	SPRING	1	STAINLESS STEEL
10	CHECK VALVE	1	MILD STEEL
11	SEALANT FITTING	1	MILD STEEL
12	CAPSCREW	4	A449 GR5
13	SHIM(SEE NOTES)	1	ASTM A240 TYPE 316 STAINLESS STEEL

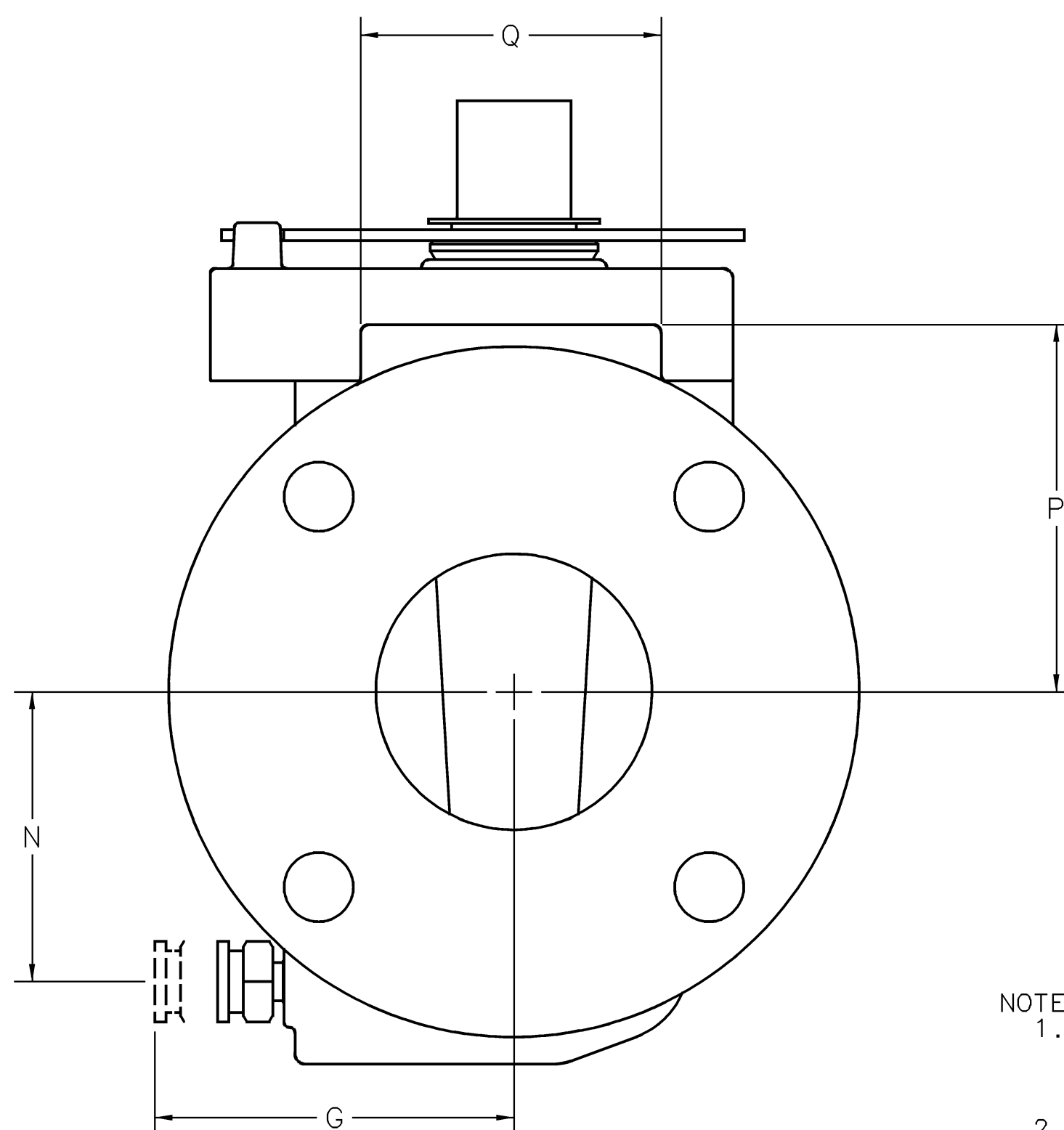
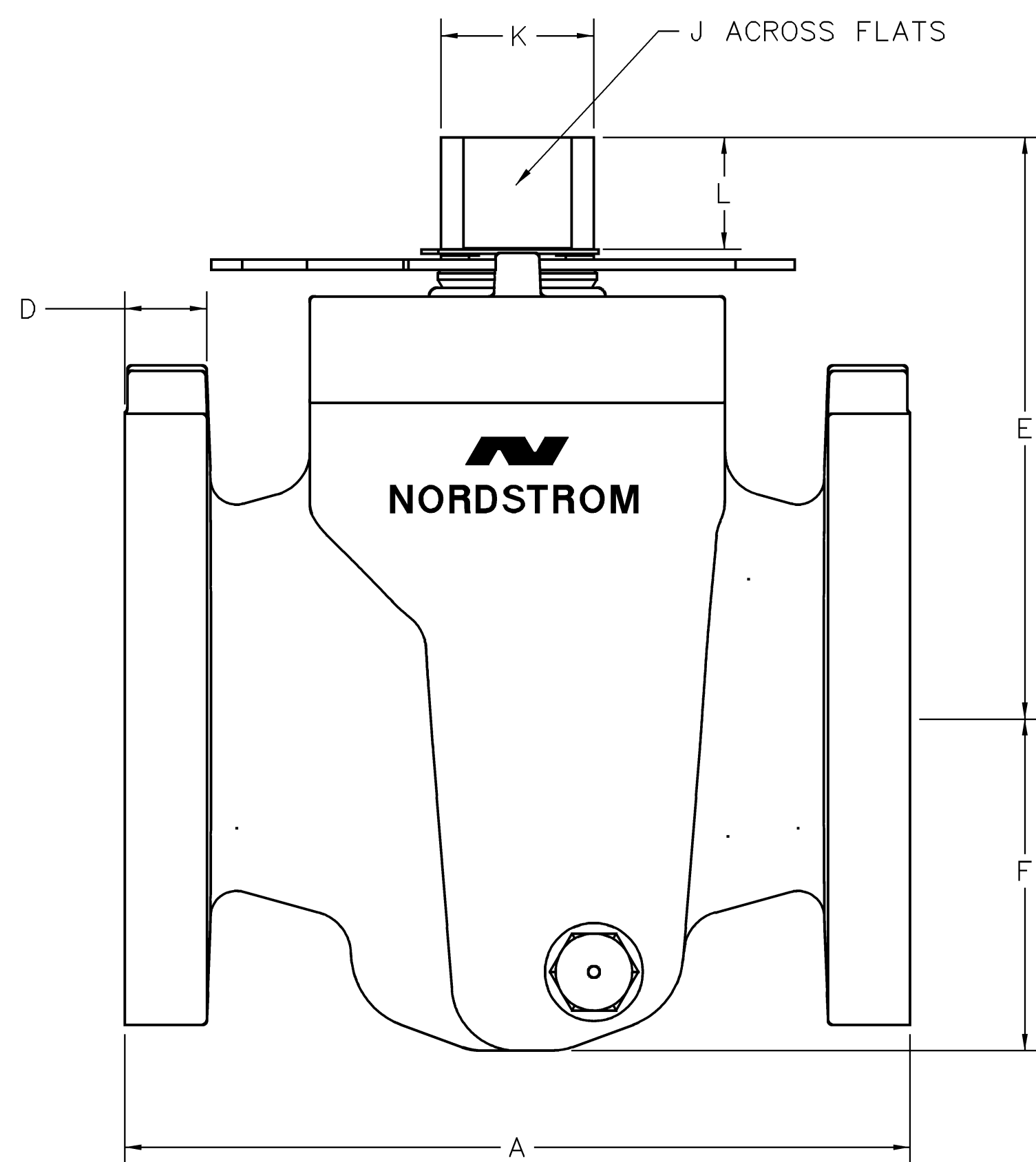
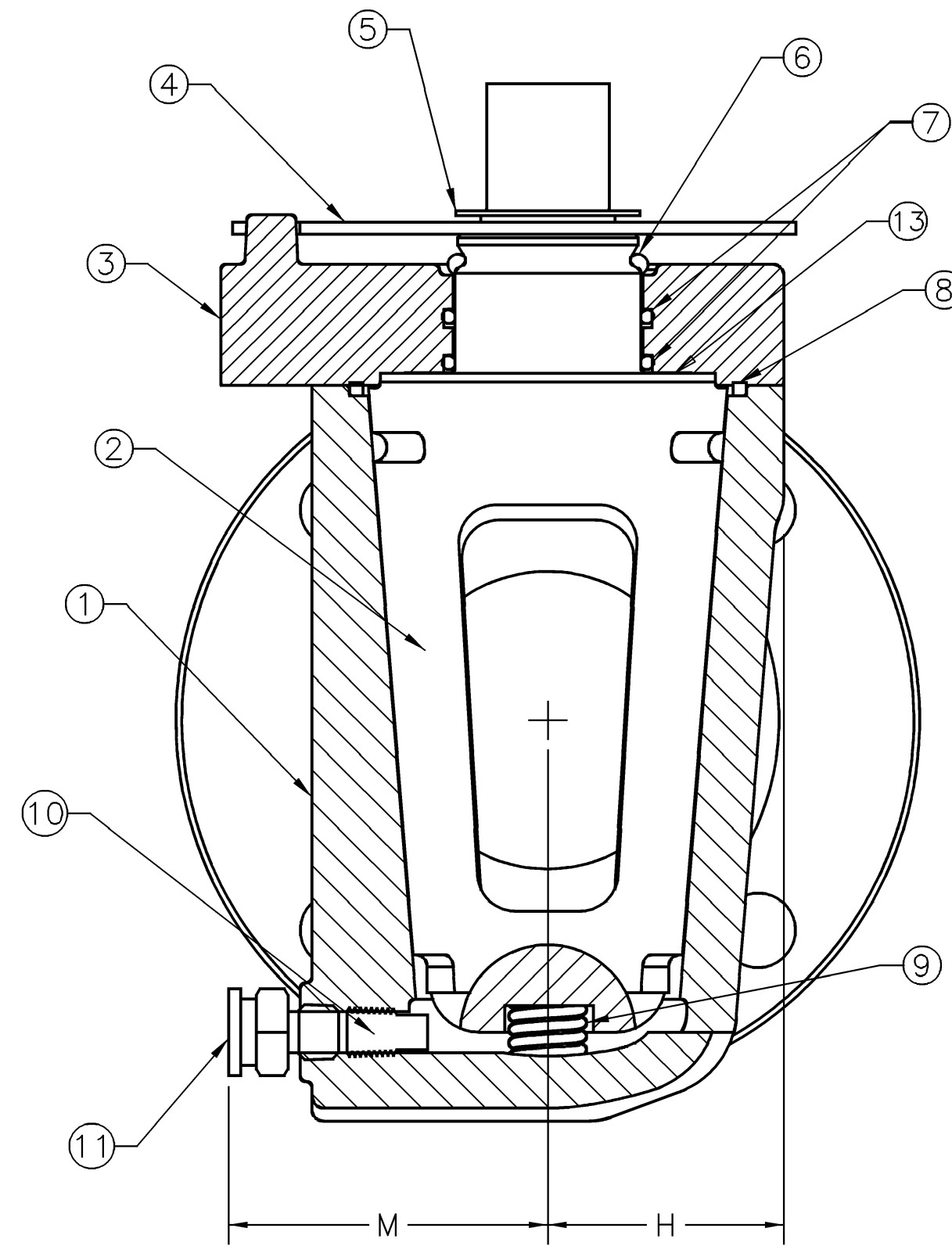
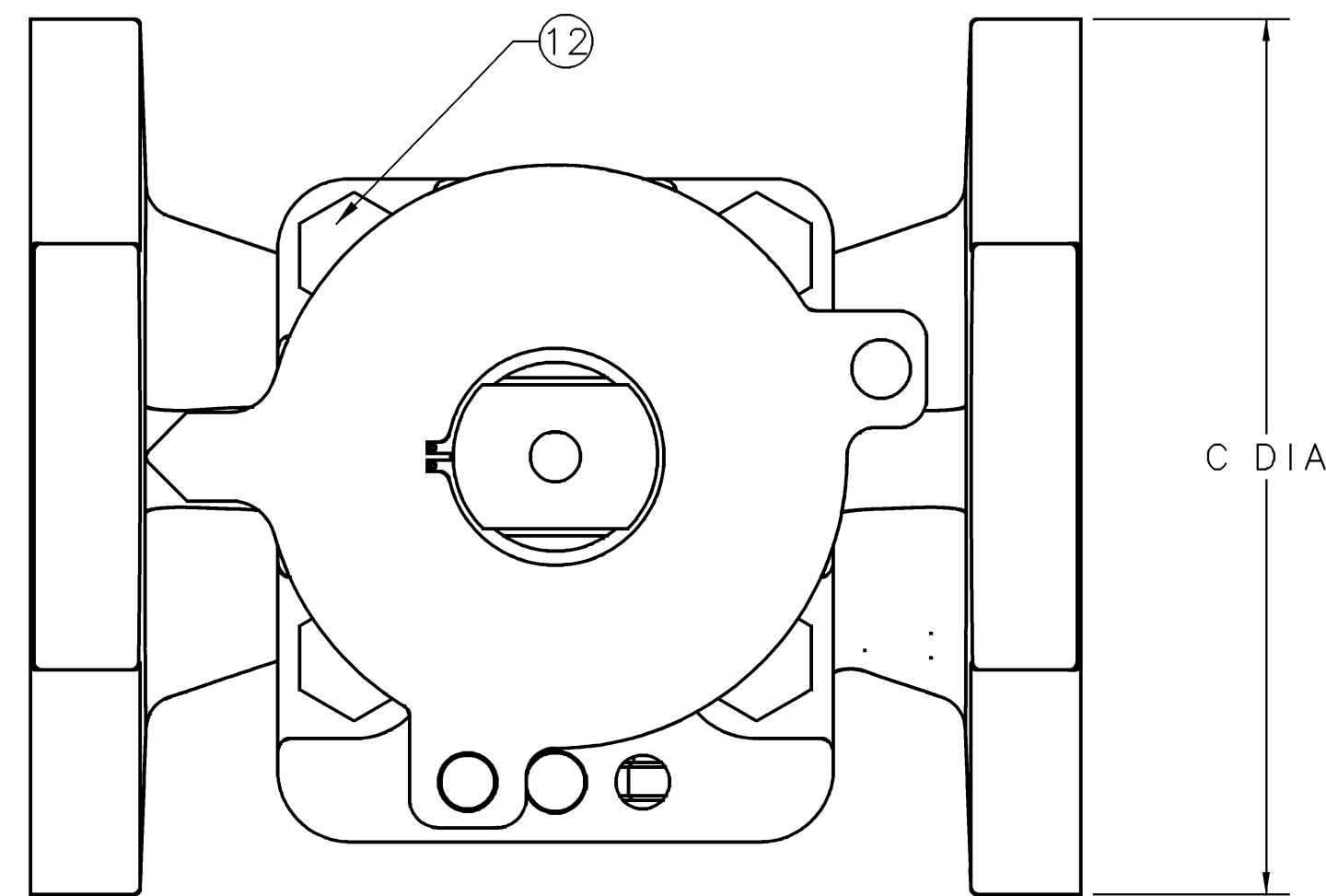
MAXIMUM NON-SHOCK SERVICE PRESSURE RATING

TEMP (F°)	ENGLISH UNITS		TEMP (C°)	METRIC UNITS	
	PSIG	BAR		PSIG	BAR
-20 TO 150	200	150	-29 TO 65	13.8	10.3
350			177		



SULPHUR SPRINGS, TEXAS
NORDSTROM FIG. A115 VALVES

SUPERSEDES:		REF DWG:	
D-2762806 REV D DTD 12/6/02			
DRWN	CHKD	APPD	SCALE: NONE DATE:
RES	DEH	SMH	D-2762806
	2/10/03	2/12/03	



- NOTES:
1. DIMENSIONS SHOWN ARE NOMINAL, PROVIDED FOR GENERAL INFORMATION AND AS SUCH ARE SHOWN WITHOUT TOLERANCE.
 2. DIMENSIONS SUBJECT TO CHANGE WITHOUT NOTICE.
 3. DIMENSIONS IN INCHES AND MILLIMETERS.
 4. FLANGED END VALVES CONFORM TO MSS SP-78.
 5. SHIMS ARE USED AS A MANUFACTURER'S OPTION AND MAY NOT BE PRESENT.

* USE THE LONGER SN-3 WRENCH FOR VALVES IN COLD CLIMATES SUCH AS CANADA.

RES/2/10/03	56845	E
BY/DATE	CHANGE NO	REV