

# 1 System Data Sheet

## ProPress Fitting Systems



Viega ProPress may only be pressed onto copper tube in accordance with ASTM B88 or B75. When pressing onto B88 copper tube, types K, L, and M may be used. Tempers O60 and O50, known as “soft copper”, are limited to nominal sizes ½" to 1¼". Temper H58, known as “hard copper”, may be used with nominal sizes ½" to 4".



When pressing onto B75 copper tube, additional considerations apply. See [Viega ProPress Copper Tube Compatibility Tech Data](#).

ProPress fittings are available in elbows, couplings, reducers, tees, reducing tees, threaded adapters, unions, caps, and flanges. All threaded ½" to 2" fittings are Zero Lead bronze.

### Operating Parameters

- Operating Pressure: 200 psi maximum
- Test Pressure: 600 psi maximum
- Operating Temperature: 0°F to 250°F

### Listings and Certificates

- |                 |                                    |
|-----------------|------------------------------------|
| ■ NSF/ANSI 61   | ■ ABS                              |
| ■ NSF/ANSI 372  | ■ CSA Low Lead Content             |
| ■ IAPMO PS-117  | ■ ASME B16.51, B31.1, B31.3, B31.9 |
| ■ UL/ANSI 213   | ■ NFPA 13, 13D, 13R                |
| ■ FM Class 1920 |                                    |
| ■ ICC-ES IC1002 |                                    |

### Compliant With

- ASME B31
- ASTM B75
- ASTM B88
- IAPMO National Standard Plumbing Code (NSPC)
- IAPMO Uniform Mechanical Code (UMC)
- IAPMO Uniform Plumbing Code (UPC)
- ICC International Mechanical Code (IMC)
- ICC International Plumbing Code (IPC)
- ICC International Residential Code (IRC)
- NFPA 13, 13D, and 13R

Contact your local Viega representative for details on local approvals.

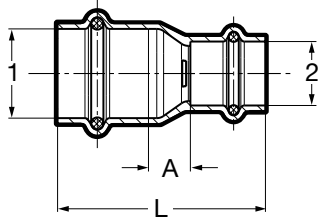
### Approved Applications

- Hot and cold potable water
- Rainwater/gray water
- Fire sprinkler (175 psi maximum)
- Chilled water
- Hydronic heating (with glycol)
- Low pressure steam (15 psi maximum)
- Ethanol
- Compressed Air
- Non-medical gases
- Vacuum (29.2" Hg maximum @ 68°F)

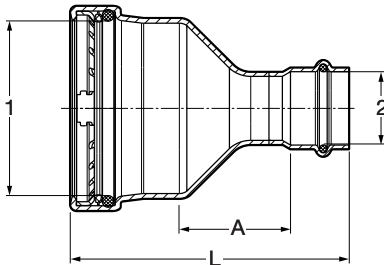
ProPress fittings are approved for installations in both above and below ground applications. Per code, local inspector approval must be obtained prior to installation below ground.

### Smart Connect® Technology

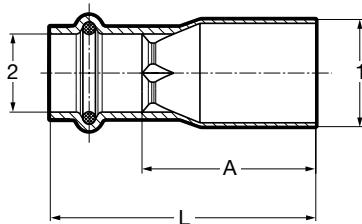
ProPress fittings are manufactured with Viega’s unique Smart Connect technology. Designed into the fitting itself, Viega Smart Connect technology allows identification of an unpressed fitting during pressure testing.

**Viega ProPress Reducer Copper P x P - Model 2915.2**


Part No.	Size (in)		A (in)	L (in)
	1	2		
78147	¾	½	0.42	2.07
15603	1	½	0.71	2.36
78152	1	¾	0.48	2.29
15593	1½	¾	0.70	2.64
78157	1½	1	0.55	2.48
18473	1½	¾	0.98	3.33
15588	1½	1	0.74	3.07
78162	1½	1¼	0.50	2.96
18468	2	¾	1.54	4.02
15608	2	1	1.29	3.78
22328	2	1¼	0.81	3.43
78167	2	1½	0.74	3.75

**Viega ProPress Reducer P x P - Model 0915.2XL**


Part No.	Size (in)		A (in)	L (in)
	1	2		
20685	2½	1	1.76	4.36
20690	2½	1¼	1.61	4.34
20695	2½	1½	1.52	4.64
20700	2½	2	1.41	4.69
20705	3	1½	1.78	5.17
20710	3	2	1.53	5.08
20715	3	2½	1.41	5.07
20720	4	2	2.06	6.00
20725	4	2½	1.93	5.99
20730	4	3	1.70	6.03

**Viega ProPress Reducer Copper FTG x P - Model 2915.1**


Part No.	Size (in)		A (in)	L (in)
	1	2		
78077	¾	½	1.42	2.17
78082	1	½	1.69	2.44
78087	1	¾	1.42	2.32
22333	1¼	½	1.91	2.74
78092	1¼	¾	1.85	2.76
78097	1¼	1	1.57	2.48
14543	1½	¾	2.56	3.46
78102	1½	1	2.28	3.19
78107	1½	1¼	2.04	3.07
78112	2	1	3.03	3.94
78117	2	1¼	2.79	3.82
78122	2	1½	2.63	4.06