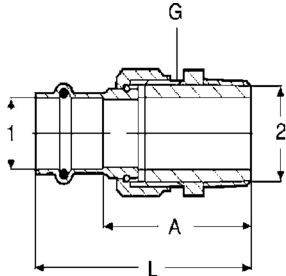


# Dimensional Documentation

**viega**



## Bronze Union P x M NPT Model 2965ZL

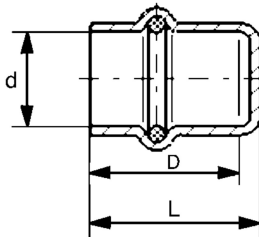


Stock Code	Size		A (in)	L (in)	G (in)
	1	2			
79730	1/2"		1.937	2.764	3/4"
79735	3/4"		1.996	2.902	1"
79740	1"		2.539	3.445	1-1/4"
79745	1-1/4"		2.492	3.516	1-1/2"
79750	1-1/2"		3.051	4.469	2"
79755	2"		2.992	4.567	2-1/2"

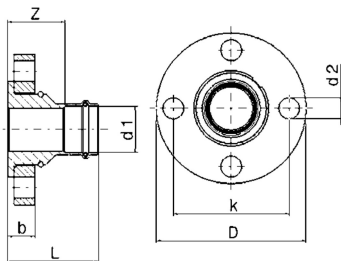
## Bronze Union P x MNPT Model 2965

Stock Code	Size		A (in)	L (in)	G (in)
	1	2			
77782	1/2" x 1/2" NPT		2.087	2.835	3/4"
77787	3/4" x 3/4" NPT		2.142	3.047	1"
77792	1" x 1" NPT		2.732	3.638	1-1/4"
77797	1-1/4" x 1-1/4" NPT		2.677	3.701	1-1/2"
77802	1-1/2" x 1-1/2" NPT		3.228	4.646	2"
77807	2" x 2" NPT		3.169	4.744	2-1/2"

## Copper Cap P Model 2956



Stock Code	Size	L (in)	D (in)
	d		
77712	1/2"	.917	0.799
77717	3/4"	1.067	0.945
77722	1"	1.110	0.992
77727	1-1/4"	1.181	1.024
77732	1-1/2"	1.622	1.465
77737	2"	1.811	1.575



## Bronze Adapter Flange P x Flange Model 2959.5ZL

Stock Code	Size	L (in)	Z (in)	b1 (in)	b2 (in)	D (in)	K (in)	d2 (in)
	d1							
79680	1"	2.756	1.850	0.630	0.827	4.331	3.110	0.630
79685	1-1/4"	2.756	1.850	0.630	0.827	4.528	3.504	0.630
79690	1-1/2"	3.071	1.654	0.630	0.827	4.921	3.858	0.630
79695	2"	3.661	2.087	0.630	0.827	5.906	4.764	0.748

## Bronze Adaptor Flange P x Flange Model 2959.5

Stock Code	Size	L (in)	Z (in)	b1 (in)	b2 (in)	D (in)	K (in)	d2 (in)
	d1							
19708	1"	2.756	1.850	0.630	0.827	4.331	3.110	0.630
19713	1-1/4"	2.756	1.850	0.630	0.827	4.528	3.504	0.630
19718	1-1/2"	3.071	1.654	0.630	0.827	4.921	3.858	0.630
19723	2"	3.661	2.087	0.630	0.827	5.906	4.764	0.748

**VIEGA** • The global leader in plumbing, heating and pipe joining systems

301 N. Main, 9th Floor • Wichita, KS 67202 • Ph: 800-976-9819 • Fax: 316-425-7618 • E-Mail: insidesales@viega.com • www.viega.com