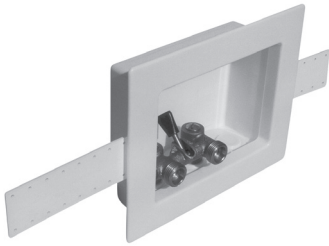
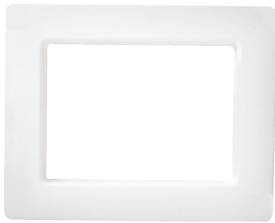


Plastic Switch Hitter® Outlet Box With Brass Simplex Valve

Consolidates all valves and hose connections into one unit. Unique single-lever handle controls both hot and cold water with one movement. Patented design. Dimensions: Box 6-1/2" x 7-5/8" x 3". Faceplate: 10-3/8" x 8-7/16".



Plastic Switch Hitter® Outlet Box
W/ Brass Simplex Valve
OB-405



White Faceplate
OB-901



Single Lever PEX Valve
P-06321

PART NUMBER	DESCRIPTION	MSTR CTN QTY	LBS
WITH M.I.P. VALVES			
OB-400	Beige, Unassembled	10	24
OB-402	Beige, Left Outlet	10	24
OB-404	Beige, Right Outlet	10	24
OB-401	White, Unassembled	10	24
OB-403	White, Left Outlet	10	24
OB-405	White, Right Outlet	10	24
WITH CPVC VALVES			
OB-429	White, Unassembled	10	24
WITH PEX VALVES (Fits Vanguard & Zurn)			
OB-435	White, Unassembled	10	24
OB-437	White, Left Outlet	10	24
ACCESSORIES / REPLACEMENT PARTS			
P-06067	Black Plastic Knob for Simplex Valve	600	
P-06290	Single Lever M.I.P. Valve W/ Rough Brass Finish	32	49
P-06320	5/8" O.D., Compr. 3/4" Male Hose Thread Valve	144	
P-06321	Single Lever PEX Valve W/ Rough Brass Finish	32	49
P-06322	Single Lever CPVC Valve W/ Rough Brass Finish	32	49
OB-901	White, for Switch Hitter®	100	17
OB-903	White, for Switch Hitter® (Deep)	100	21

* Add "-T" to the end of the part number for Tract Pack (faceplates packaged separately)

