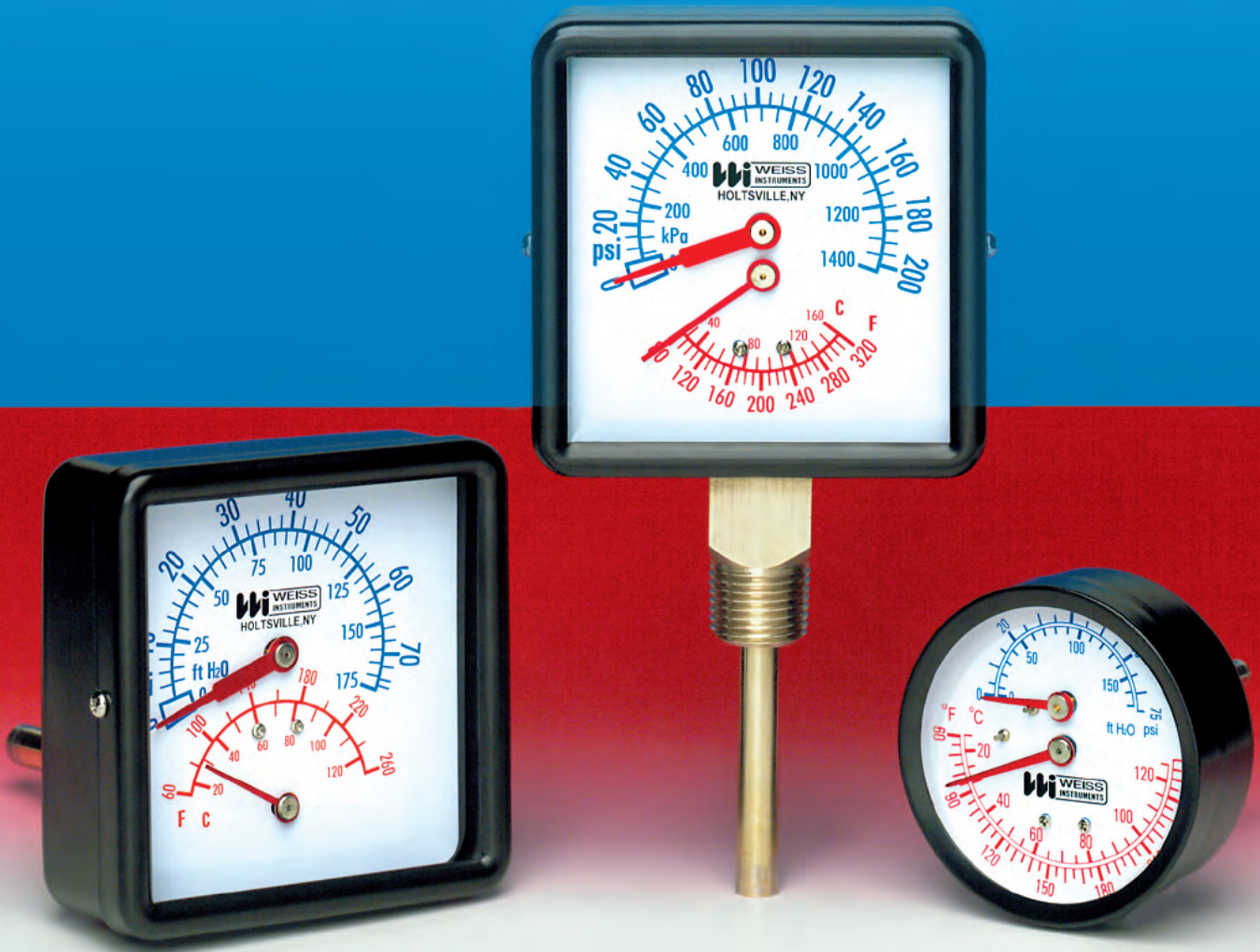


WEISS INSTRUMENTS

TRI-O-METERS



The Weiss TRI-O-METER is designed for use on all types of hot water heating systems. One instrument indicates water pressure, water temperature and system head in feet of water. The TRI-O-METER is available in two dial sizes, a 3 1/2" square dial with 1/2" NPT in lower or rear connection. And a 2 1/2" round dial with 1/4" NPT rear connection. Bold markings and colors on a white dial ensure easy readability and a good looking addition to any installation.

SPECIFICATIONS

DIAL SIZE 2 1/2" and 3 1/2"

CASE Black epoxy coated steel with glass window.

CONNECTION Brass NPT fitting with brass sensor bulb.

PRESSURE & TEMPERATURE ELEMENT Phosphor bronze.

SYSTEM ACCURACY Pressure /Altitude $\pm 2\%$ of Span in middle half of range, $\pm 3\%$ of Span elsewhere. Temperature $\pm 3\%$ of Span over entire range.

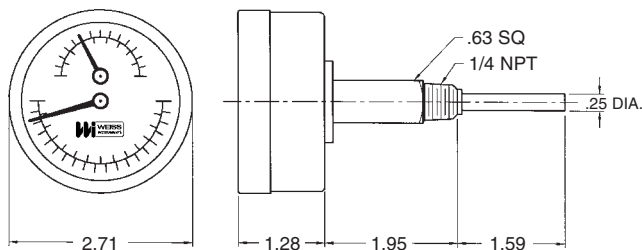
RANGES Series C 0-75psi & ft. of H₂O, 60-260°F&C.

Series H 0-200psi & kPa, 80-320°F&C.

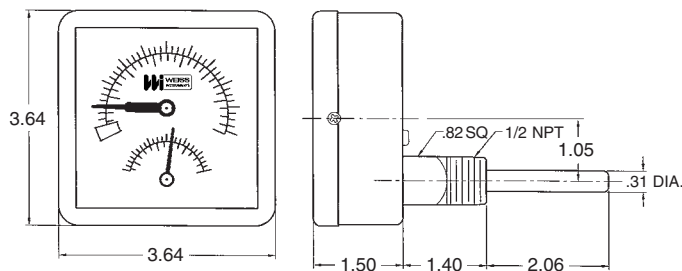
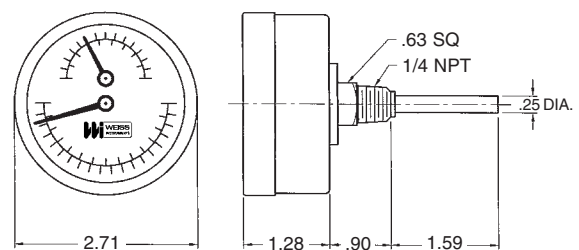
CATALOG NUMBERS:

CTP25R	1/4" NPT Rear
CTP25RX	1/4" NPT Rear x 2" extension
CTP40RSX	1/2" NPT Rear
CTP40L	1/2" NPT Lower
HTP40RSX	1/2" NPT Rear
HTP40L	1/2" NPT Lower

CTP25RX
Extension

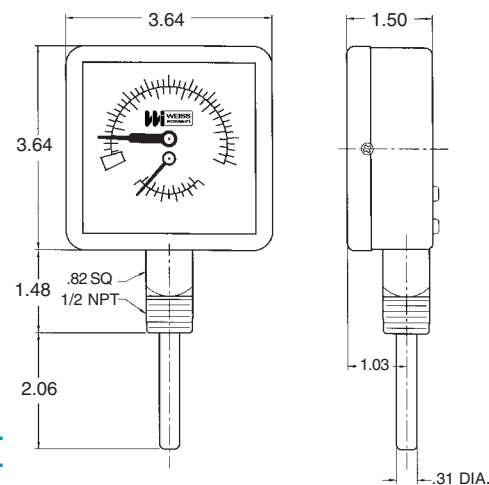


CTP25R



CTP40RSX
HTP40RSX

CTP40L
HTP40L



CTP-5/07