

Pipe Rollers & Roller Supports

B3114 - Pipe Roll with Sockets (TOLCO Fig. 322)

Size Range: 2" (25mm) thru 30" (750mm) pipe

Material: Cast iron and steel axle

Function: For supporting pipe where expansion may occur due to thermal movement. Double rod design provides support for greater loads.

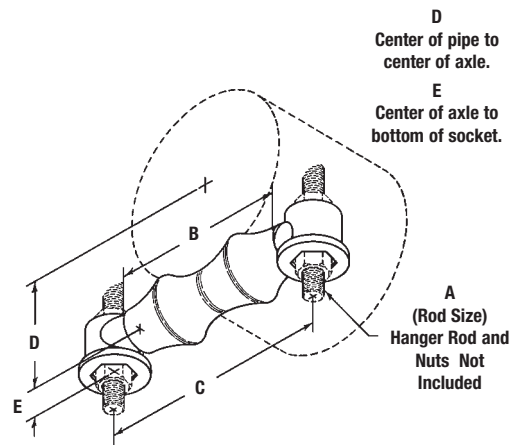
Approvals: Conforms to Federal Specification WW-H-171E & A-A-1192A, Type 42, 2" (50mm) thru 24" (600mm), and Manufacturers Standardization Society ANSI/MSS SP-69 & SP-58, Type 41

Note: When pipe line is insulated, total outside diameter of pipe and covering should be used to determine size of hanger; also see B3160 to B3165 on pages 155 thru 160.

Finish: Plain. Contact B-Line for alternative finishes and materials.

Order By: Part number, pipe size and finish

Note: Not for continuous cycling applications.



Part No.	Pipe Size		Rod Size		B		C		D	
	in.	(kg)	A	in.	(kg)	in.	(kg)	in.	(kg)	
B3114-2	2"	(50)	3/8"-16	2 5/8"	(66.7)	4 1/8"	(104.8)	1 9/16"	(39.7)	
B3114-2 1/2	2 1/2"	(65)	1/2"-13	3 1/8"	(79.4)	4 7/8"	(123.8)	1 7/8"	(47.6)	
B3114-3	3"	(80)	1/2"-13	3 3/4"	(95.2)	5 1/2"	(139.7)	2 3/16"	(55.6)	
B3114-3 1/2	3 1/2"	(90)	1/2"-13	4 1/4"	(107.9)	6 1/8"	(155.6)	2 1/2"	(63.5)	
B3114-4	4"	(100)	5/8"-11	4 3/4"	(120.6)	6 3/4"	(171.4)	2 3/4"	(69.8)	
B3114-5	5"	(125)	5/8"-11	5 13/16"	(147.6)	8 1/16"	(204.8)	3 3/8"	(85.7)	
B3114-6	6"	(150)	3/4"-10	6 7/8"	(174.6)	9 9/16"	(242.9)	3 15/16"	(100.0)	
B3114-8	8"	(200)	7/8"-9	8 7/8"	(225.4)	11 15/16"	(303.2)	5 1/16"	(128.6)	
B3114-10	10"	(250)	7/8"-9	11"	(279.4)	14 1/16"	(357.2)	6 1/4"	(158.7)	
B3114-12	12"	(300)	7/8"-9	13"	(330.2)	15 13/16"	(401.6)	7 3/8"	(187.3)	
B3114-14	14"	(350)	1"-8	14 1/4"	(361.9)	17 3/4"	(450.8)	8 1/4"	(209.5)	
B3114-16	16"	(400)	1"-8	16 1/4"	(412.7)	19 3/4"	(501.6)	9 1/4"	(234.9)	
B3114-18	18"	(450)	1"-8	18 1/4"	(463.5)	21 7/8"	(555.6)	10 3/8"	(263.5)	
B3114-20	20"	(500)	1 1/4"-7	20 1/4"	(514.3)	24 1/4"	(615.9)	11 1/2"	(292.1)	
B3114-24	24"	(600)	1 1/2"-6	24 1/4"	(615.9)	28 7/8"	(733.4)	13 13/16"	(350.8)	
B3114-30	30"	(750)	1 1/2"-6	30 1/4"	(768.3)	35 1/2"	(901.7)	17 1/4"	(438.1)	

Notes: If using D.I. pipe refer to page 298 for sizing. Non-metallic rollers with hot-dip galvanized sockets and stainless steel hardware are available for most sizes (B3114NM-Pipe Size). Contact B-Line Engineering for more information.



Part No.	E		Max. O.D. Covering		Design Load		Approx. Wt./100	
	in.	(kg)	in.	(kg)	Lbs.	(kN)	Lbs.	(kg)
B3114-2	3/4"	(19.0)	3 3/4"	(82.5)	600	(2.67)	119	(54.0)
B3114-2 1/2	3/4"	(19.0)	3 3/4"	(95.2)	660	(2.93)	140	(63.5)
B3114-3	3/4"	(19.0)	4 1/2"	(114.3)	700	(3.11)	158	(71.6)
B3114-3 1/2	3/4"	(19.0)	5"	(127.0)	750	(3.33)	170	(77.1)
B3114-4	3/4"	(19.0)	5 7/8"	(149.2)	750	(3.33)	188	(85.3)
B3114-5	3/4"	(19.0)	7"	(177.8)	750	(3.33)	246	(111.6)
B3114-6	1 1/8"	(28.6)	8 1/4"	(209.5)	1070	(4.76)	504	(228.6)
B3114-8	1 1/8"	(28.6)	10 1/2"	(266.7)	1350	(6.00)	658	(298.4)
B3114-10	1 1/8"	(28.6)	12 3/4"	(323.8)	1730	(7.69)	849	(385.1)
B3114-12	1 1/8"	(28.6)	14 3/4"	(374.6)	2400	(10.67)	1200	(544.3)
B3114-14	1 1/2"	(38.1)	16 1/4"	(412.7)	3130	(13.92)	2289	(1038.3)
B3114-16	1 1/2"	(38.1)	18"	(457.2)	3970	(17.66)	2497	(1132.6)
B3114-18	1 1/2"	(38.1)	20 1/4"	(514.3)	4200	(18.68)	2899	(1315.0)
B3114-20	1 1/2"	(38.1)	22 1/2"	(571.5)	4550	(20.24)	3637	(1649.7)
B3114-24	2"	(50.8)	26 1/2"	(673.1)	6160	(27.40)	5664	(2569.2)
B3114-30	2"	(50.8)	32 1/2"	(825.5)	7290	(32.42)	9437	(4280.6)

36" (900) available upon request.

All dimensions in charts and on drawings are in inches. Dimensions shown in parentheses are in millimeters unless otherwise specified.