

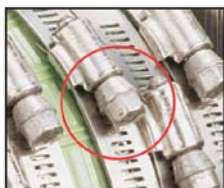
**PROFLO HEAVY DUTY  
NO-HUB COUPLINGS**  
*HD Series*



PROFLO™ Heavy-Duty No-Hub Couplings meet the demands of the toughest applications



# PROFLO HEAVY DUTY NO-HUB COUPLINGS HD Series



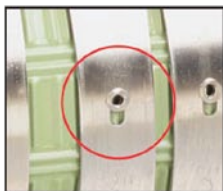
### Larger Hex Head Screw

The 3/8" hex head screw is designed to apply the full load of 80 in. lbs. of installation torque to the band/shield assembly.



### Specially Beaded Gaskets

The heavy-duty coupling utilizes a specially beaded gasket that mates with the shield and clamping forces for superior sealing pressure and holding power. PROFLO™ gaskets comply with ASTM C564.



### Floating Eyelet Design

Floating eyelets fasten the clamps to the shield, allowing the clamp band and shield to move independently. This freedom prevents the shield from crimping during tightening, which can lead to leakage later on.



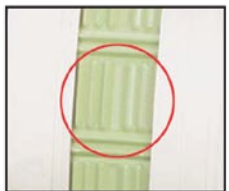
### Mechanical Interlocking Clamp Design

PROFLO™ clamps feature a one-piece screw housing that mechanically interlocks the housing to the band. This one-piece housing design eliminates leak paths that can occur in staked or welded clamps.



### Green Shield

The distinctive green shield quickly identifies the PROFLO™ Heavy-Duty Couplings.



### Patented Bi-directional Shield Design

The unique shield design employs bi-directional corrugations for maximum transfer of pressure from the clamps to the gasket. This patented\* shield design adjusts to differences in the circumference and outside diameters of the pipes being joined. This eliminates gasket wrinkling and thereby eliminates leak paths. These bi-directional corrugations also create sealing pressure in both parallel and transverse patterns on the gasket and pipe. This works to avoid pullout failures and provides a positive, reliable seal.

Features	PROFLO Heavy Duty HD Series Couplings
9/16" Clamp Band	✓
3/8" Hex Head Screw	✓
No. of Clamps Included	4 (1-1/2" thru 4") 6 (5" thru 10")
Coupling Width	1-1/2" thru 4" = 3" 5", 6", 8" & 10" = 4"
Shield Color	Green
Bi-Directional Shield	✓
Beaded Gasket	8" & 10"
Offset Ribbed Gaskets	1-1/2" thru 6"
Floating Eyelets	✓
Shield Material	304 SS
Band Material	304 SS
Housing Material	304 SS
Screw Material	305 SS
Eyelet Material	305 SS
Gasket Material	ASTM C564 Compliant
Installation Torque	80 in-lbs
Ultimate Torque	100 in-lbs
CISPI 310 Compliant	Exceeds
ASTM C1540 Compliant	✓
Factory Mutual 1680	Compliant
IAPMO	Certified
Canadian Std Association	Certified
Massachusetts Approval	✓

\*U.S. Patent N. 5,431,458

# PROFLO HEAVY DUTY NO-HUB COUPLINGS HD Series



The PROFLO™ Heavy-Duty No-Hub Coupling installs with 80 in.-lbs. of screw torque and boasts an ultimate torque rating exceeding 100 in.-lbs. Its patented, extra wide bi-directional shield is now constructed with a heavier gauge stainless steel. The mechanically interlocked 9/16" wide clamps have also been "beefed up" with a heavier gauge stainless steel and a 3/8" hex head screw. These changes, teamed with a specially beaded gasket, enable our new Heavy-Duty Coupling to exert exceptional hold on the pipe for a positive reliable seal. Look for the distinctive green shield to be sure you are getting the PROFLO™ Heavy-Duty No-Hub Coupling.

**Description:** Couplings consist of gasket and shield assemblies. The shield assemblies have four or six clamps depending on size. The clamps are fastened with eyelets to the bi-directional corrugated shield.

**Materials:** Steels used in couplings are stainless steels. Shields, bands and housings are AISI 304. Screws and eyelets are AISI 305. Gaskets are made from an elastomeric compound that meets the requirements of ASTM C564.

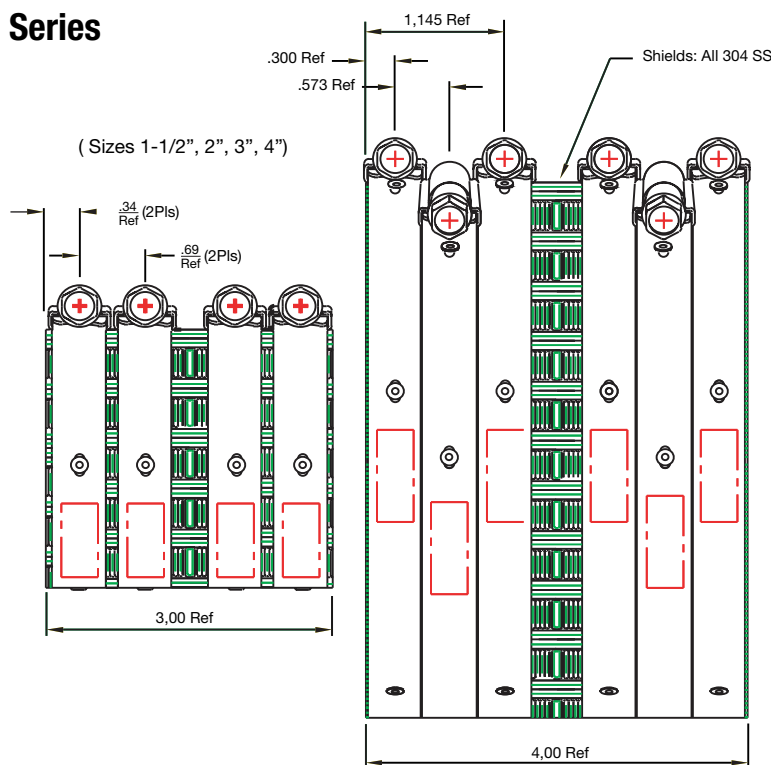
**Specifications:** Couplings conform to CISPI 310, Factory Mutual CN 1680. Couplings comply with ASTM C564, ASTM C1540, IAPMO file #3198, Commonwealth of Massachusetts CMR-248 and City of New York MEA 253-98-E. Gaskets are made from an elastomeric compound that meets the requirements of ASTM C564.

**Service temperature:** From -22 to 250 degrees F (-30 to 121C)

(Sizes 5", 6", 8", 10")

## PROFLO™ Heavy-Duty No-Hub Couplings - HD Series

Size	Part No.	Installation Torque (inch-pounds)	No. of Clamps Per Coupling
1-1/2" HD GRN	PFNHHDCJ	80	4
2" HD GRN	PFNHHDCK	80	4
3" HD GRN	PFNHHDCM	80	4
4" HD GRN	PFNHHDCP	80	4
5" HD GRN	PFNHHDCS	80	6
6" HD GRN	PFNHHDCU	80	6
8" HD GRN	PFNHHDCX	80	6
10" HD GRN	PFNHHDC10	80	6



To be used with the RAPTOR™  
**RAP18552 Torque Wrench**

Made in the USA

