

Standard No-Hub Couplings



POLYCHLOROPRENE (NEOPRENE) GASKET

Made from high-quality elastomeric compound per ASTM C564, the PROFLO® No-Hub gasket features a laterally-spaced pattern of multiple thick sealing sectors and adjacent groove sectors. When the clamps are tightened, this pattern permits the clamping bands and the shield to form a restriction impeding the movement of the shield relative to the gasket.

RECTANGULAR BAND NOTCHES

With our rectangular notch design, there is a larger radius at either end of the rectangular notch, reducing the probability of stress cracking. There is also more solid band (land area) between the notches with a rectangular notch design. The greater the land area, the greater the band strength.



NSF CERTIFIED

NSF International is the world leader in standards development and product certification. With this certification, you'll have peace of mind that the PROFLO standard couplings are fully certified to CISPI 310 and ASTM C564. Before the NSF certification, it was difficult to verify couplings were compliant with the CISPI 310 standard. Be sure to look for the blue NSF mark and you'll always be in compliance.

TORQUE RATING

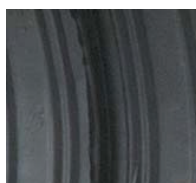
Installation (60 in.-lbs.) torque ratings are engineered to provide the clamps with enough tightening capacity to ensure that ample sealing pressure reaches the joint to affect a tight, secure seal.

Standard No-Hub Couplings



Clamps

Standard-duty clamps with all 300 series stainless steel construction, featuring 1/2" clamp band in sizes 1-1/2" – 4" and 9/16" wide bands in sizes 5 – 10 with 5/16" hex-head screws, provide optimum sealing force.



Specially Beaded Gaskets

Made from high-quality elastomeric compound per ASTM C564, the PROFLO no-hub gasket features a laterally-spaced pattern of multiple thick sealing sectors and adjacent groove sectors. When the clamps are tightened, this pattern permits the clamping bands and the shield to form a restriction which impedes the movement of the shield relative to the gasket.



Floating Eyelet Design

Floating eyelets fasten the clamps to the shield, allowing the clamp band and shield to move independently. This freedom prevents the shield from crimping during tightening which can lead to leakage later on.



Mechanical Interlocking Clamp Design

Standard-duty clamps with all 300 series stainless steel construction, featuring 1/2" clamp band in sizes 1-1/2" – 4" and 9/16" wide bands in sizes 5 – 10 with 5/16" hex-head screws, provide optimum sealing force at 60 in.-lbs. installation torque. Interlocked clamp designs provide higher torque ratings without the risk of housing separation.



Shield Design

The 0.007" thick all 300 series stainless steel shield requires less band load to transfer pressure to the gasket, leaving more clamping load in reserve to compress the gasket.

Materials	
Clamp	All 300 Series AISI Stainless Steel (Band and Screw Housing)
Screw	All 300 Series AISI Stainless Steel (5/16" Hex Head/Shoulder)
Shield	All 300 Series AISI Stainless Steel
Rivets	All 300 Series AISI Stainless Steel
Gasket	Elastomeric Compound Primarily Consisting of Neoprene; Meets ALL Requirements of ASTM C564

*Assembled in Mexico
with USA steel and gaskets*

Standard No-Hub Couplings



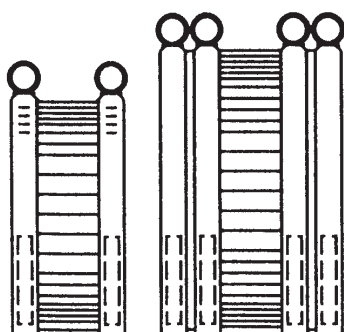
Description: Couplings consist of gasket and shield assemblies. The shield assemblies have two to four clamps depending on the size. The clamps are fastened with eyelets to the bidirectional corrugated shield.

Materials: Premium-grade stainless steel components provide superior corrosion resistance, reliability and durability over time in both above-ground and below-ground applications. Shields, bands and housings are AISI 300. Screws and eyelets are AISI 300. Gaskets are made from an elastomeric compound that meets the requirements of ASTM C564.

Specifications: Coupling complies with CISPI 310, ASTM C564, ASTM C1277, IAPMO file #3198; certified to Commonwealth of Massachusetts CMR-248 and City of New York MEA 253-98-E.

Service Temperature: From -30°F – 220°F

Shield & Clamp Assembly



Sizes
1-1/2" – 4"

Sizes
5" – 10"



Optional: RAPTOR® torque
wrench (**RAP18550**)

*Assembled in Mexico
with USA steel and gaskets*

PROFLO Standard No-Hub Couplings

Size	SKU	No. of Clamps	Coupling Width	Installation Torque	Screw Hex Size
1-1/2"	PFNHCJ	2	2-1/8"	60 in.-lbs.	5/16"
2"	PFNHCK				
3"	PFNHCM				
4"	PFNHCP				
5"	PFNHCS	4	3"		
6"	PFNHCU		4"		
8"	PFNHCX				
10"	PFNHC10				
2" x 1-1/2"	PFNHRCKJ	2	2-1/8"		
3" x 2"	PFNHRCKM				
4" x 3"	PFNHRCPM				