



Terrano Tub Spout

37410XX1

Uno Tub Spout

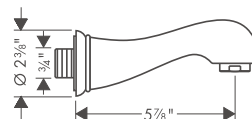
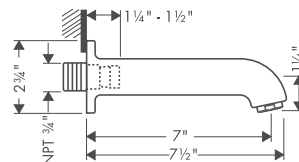
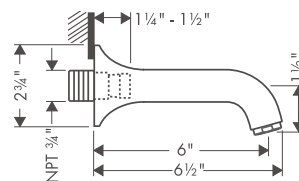
38410XX1

Phoenix Tub Spout

17420XX1

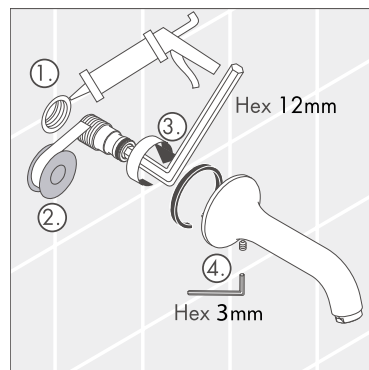
Installation Considerations

- This unit requires a 3/4" female pipe fitting, recessed 3/8" behind the surface of the finished wall.
- Tools required: 12 mm hex wrench (not included; available at auto parts stores); 3 mm hex wrench (included)



Installation Instructions

- Seal the wall around the female pipe fitting using a good quality waterproof bathroom sealant
- Wrap the mounting piece clockwise with 2-3 layers of good quality plumbers' thread tape.
- Screw the mounting piece into the pipe fitting. Tighten with the 12 mm hex wrench. Do not overtighten!
- Slide the tub spout over the mounting piece until flush with the surface of the finished wall.
- Secure the tub spout to the mounting piece with the set screw, using the 3 mm hex wrench.



AXOR

90892004 05/02

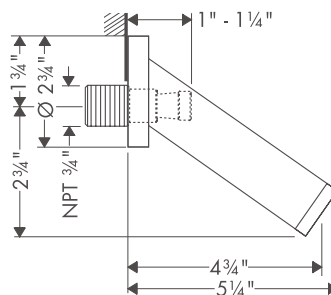


Starck Tub Spout

10410XX1

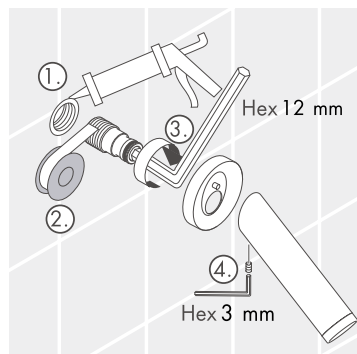
Installation Considerations

- This unit requires a $\frac{3}{4}$ " female pipe fitting, recessed $\frac{3}{8}$ " behind the surface of the finished wall.
- Tools required: 12 mm hex wrench (not included; available at auto parts stores); 3 mm hex wrench (included)



Installation Instructions

- Seal the wall around the female pipe fitting using a good quality waterproof bathroom sealant
- Wrap the mounting piece clockwise with 2-3 layers of good quality plumbers' thread tape.
- Screw the mounting piece into the pipe fitting. Tighten with the 12 mm hex wrench. Do not overtighten!
- Slide the escutcheon over the mounting piece, with the retaining pin on the top.
- Slide the tub spout over the mounting piece until flush with the escutcheon.
- Secure the tub spout to the mounting piece with the set screw, using the 3 mm hex wrench.



Care Instructions:

- Clean with a mild cleaner diluted in water and a soft cloth. Rinse with clear water and polish dry with a soft cloth.
- Do not use cleaners containing acids, abrasives, or solvents.
- Damage caused by harsh cleaners is not covered under the warranty.

AXOR



Hansgrohe Consumer Warranty

Hansgrohe products are manufactured and tested to the highest quality standards. Hansgrohe, Inc. warrants to the original consumer that its products will be free from defects of workmanship and materials for as long as the original consumer owns the home in which the products are installed. Accessories or parts of products manufactured by others are warranted only for the period and to the extent of the original manufacturer's warranty.

This warranty applies only to products purchased for consumer use. Products purchased for commercial, industrial or business use are covered under a separate one-year warranty. ***This warranty does not cover installation or any other labor charges associated with the repair or reinstallation of Hansgrohe products. This express warranty does not apply to products that have been damaged due to misuse, abuse, negligence, accident, faulty installation, use of abrasive or caustic cleaners, poor maintenance practices or use in any manner contrary to the written instructions provided.***

Hansgrohe, Inc. will repair or replace, at its option, free of charge during the warranty period, any part which proves to be defective in material and/or workmanship under normal installation, use, service and maintenance. If Hansgrohe, Inc. is unable to provide a replacement and repair is not practical or cannot be made in a timely manner, Hansgrohe, Inc. will refund the purchase price in exchange for return of the product. THIS REMEDY IS THE SOLE AND EXCLUSIVE REMEDY TO THE PURCHASER FOR THE BREACH OF ANY WARRANTIES OR NEGLIGENCE BY HANSGROHE, INC.

For assistance, simply notify your Hansgrohe dealer or write to: Customer Service, Hansgrohe, Inc., 1490 Bluegrass Lakes Pkwy, Alpharetta, GA 30004. Include the original receipt with a description of problem, model number and your name and address. Hansgrohe may, at its option, require you to send the defective part of the product prepaid for inspection prior to replacement.

This warranty is limited to the above; and this warranty and any warranties implied by state law, including the implied warranty of merchantability, apply only to products purchased after March 1, 1996. This warranty gives you specific legal rights; you may also have other rights which vary from state to state. Unless otherwise contrary to state law governing the purchase, Hansgrohe, Inc. liability will not exceed the contract price for the product claimed to be defective or unsuitable and is applicable only to products purchased through Hansgrohe, Inc. and installed in the United States or Canada.

Hansgrohe Inc. 1490 Bluegrass Lakes Parkway Alpharetta GA 30004
Phone 770 360 9880 Internet www.Hansgrohe-USA.com

AXOR®