

# INSTALLATION INSTRUCTIONS

## FLEX-SEAL® ARC Adjustable Repair Coupling

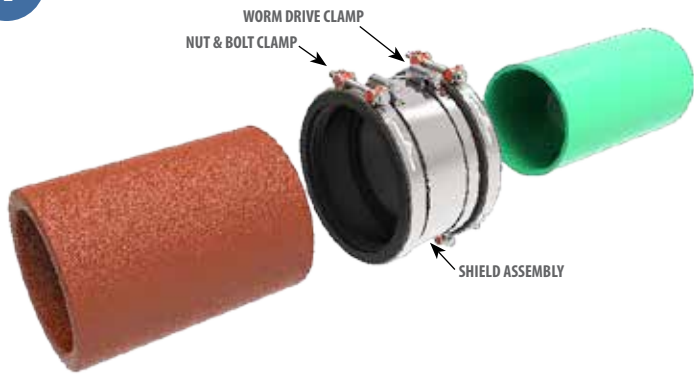
# ARC

SHIELDED REPAIR COUPLING



Where there is a need to withstand shear forces, deflection and improved alignment. For joining similar and dissimilar pipe sizes and pipe materials.

1



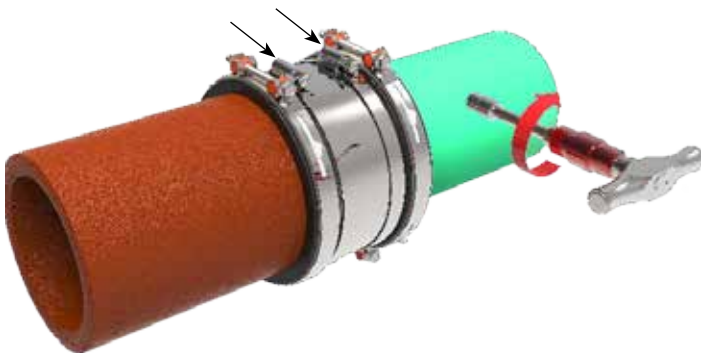
Loosen bolts on stainless steel shield assembly (worm drive clamps) and end clamps (Nut & Bolt). Do not remove the shield assembly or end clamps from the gasket.

2



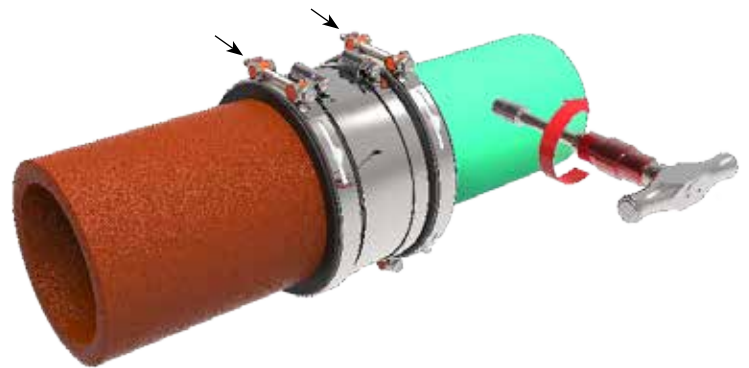
Slide the Flex-Seal® ARC Coupling over the plain spigot ends of the two pipes to be joined.

3



Tighten worm drive clamps alternately and firmly to 60 in/lbs. of torque.

4



Tighten Nut & Bolt clamps alternately and firmly to 60 in/lbs. of torque.



Mission Rubber Company LLC | 1660 Leeson Ln. | Corona CA 92879 USA

toll free 800.854.9991 fax 800.637.4601

[missionrubber.com](http://missionrubber.com)

REV. 1/19



**MISSION**  
RUBBER COMPANY

connected, for good™