

## AVAILABLE IN 3/4" - 2" SIZES

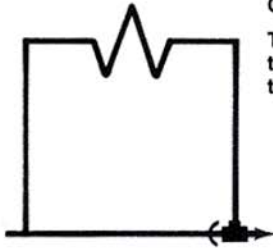
Monoflo Fittings make possible the use of a single pipe to act as both a supply and return main. These fittings connect the risers to the main and assure proper diversion of water to each terminal unit. They can be installed on either the supply or return riser or both depending on the pressure drop through the side branch circuit and terminal unit.



# Red Ring<sup>®</sup> Copper Monoflo Fittings

## It's EASY to install B & G Monoflo Fittings

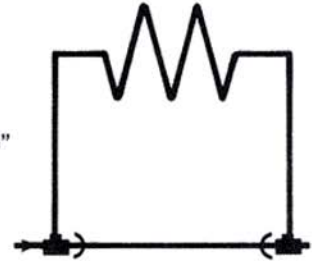
### ONE FITTING INSTALLATION —



The "RING" trademark goes between the risers; the Return arrow points in the direction of flow.

### TWO FITTING INSTALLATION —

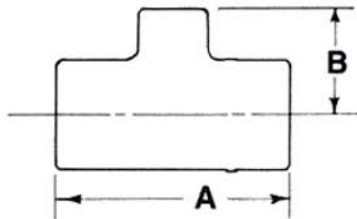
The Monoflo Fitting is used for both Supply and Return. The "RING" trademarks are between the risers; the arrow points in the direction of flow.



### ONLY ONE FITTING NEEDED ON MOST INSTALLATIONS

In most cases using radiators, convectors or baseboard only one Red Ring Monoflo Fitting is needed to provide adequate diversion for upfeed radiation. Only when high resistance units are used or when radiation is down-feed are fittings required on both supply and return risers.

No matter where a Monoflo Fitting is used the fitting is always correctly installed with the "Red Ring" trademark between the risers. Contact your local Bell and Gossett representative or write Bell and Gossett, Morton Grove, Illinois for design and application data.



**MAXIMUM WORKING PRESSURE — 150 PSIG**

**MAXIMUM OPERATING TEMPERATURE — 300°F.**

### DIMENSIONS, WEIGHTS & PERFORMANCE

SIZE INCHES	DIMENSIONS — INCHES*		Cv RATINGS**		APPROXIMATE SHPG. WT. LBS.
	A	B	1 FTG	2 FTG	
3/4 x 1/2***	2 <sup>5</sup> / <sub>16</sub>	1 <sup>1</sup> / <sub>32</sub>	4.2	—	1/4
1 x 1/2	2 <sup>3</sup> / <sub>4</sub>	1 <sup>7</sup> / <sub>32</sub>	14.5	8.7	1/2
1 x 3/4	2 <sup>29</sup> / <sub>32</sub>	1 <sup>7</sup> / <sub>16</sub>			
1 1/4 x 1/2	2 <sup>15</sup> / <sub>16</sub>	1 <sup>9</sup> / <sub>32</sub>	24.0	15.5	
1 1/4 x 3/4	3 <sup>7</sup> / <sub>32</sub>	1 1/2			
1 1/2 x 3/4	3 <sup>7</sup> / <sub>16</sub>	1 <sup>21</sup> / <sub>32</sub>	39.0	25.0	1 1/4
1 1/2 x 1	3 <sup>5</sup> / <sub>8</sub>	1 <sup>7</sup> / <sub>8</sub>			
2 x 3/4	3 <sup>7</sup> / <sub>8</sub>	2	80.0	55.0	1 3/4
2 x 1	4 <sup>3</sup> / <sub>8</sub>	2 <sup>5</sup> / <sub>32</sub>			

\*Do not use for construction. Dimensions are approximate and subject to change. Contact factory for certified dimensions.

\*\*With Side Branch plugged.

\*\*\*Return only.



Xylem Inc.  
8200 N. Austin Avenue  
Morton Grove, Illinois 60053  
Phone: (847) 966-3700  
Fax: (847) 965-8379  
[www.xylem.com/brands/bellgossett](http://www.xylem.com/brands/bellgossett)

Bell & Gossett is a trademark of Xylem Inc. or one of its subsidiaries.  
© 2012 Xylem Inc. A-400B September 1990