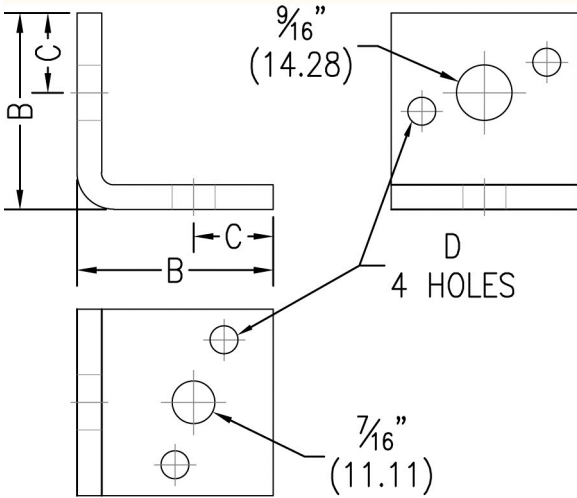


FIG. 925

REVERSIBLE SIDE BEAM ANGLE BRACKET



Function: Designed for attaching hanger rod to the side of beams or walls. Fig. 925 can accommodate either $\frac{3}{8}$ " or $\frac{1}{2}$ " rod.

Material: Carbon steel

Finish: Plain or electro-galvanized (Hot dipped galvanized upon request)

Approvals: Complies with Federal Specification A-A-1192A (Type 34) and Manufacturers' Standardization Society ANSI/MSS SP-58 (Type 34) which supersedes ANSI/MSS SP-69.

Ordering: Specify figure number and finish.

For Rod Size	B		C		D		Max. Rec. Load		Wt. Each	
	lbs.	kg	lbs.	kg	lbs.	kg	lbs.	kg	lbs.	kg
$\frac{3}{8}$ or $\frac{1}{2}$	2	(50.80)	$\frac{13}{16}$	(20.64)	$\frac{9}{32}$	(7.14)	500	(2.22)	.50	(.23)