

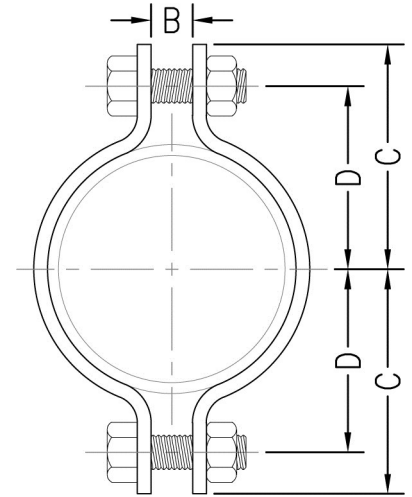
PIPE CLAMPS



STANDARD PIPE CLAMP

FIG. 520 & 521

- Function:** Designed to be used in the suspension of non-insulated pipe lines. Normally used in conjunction with Fig. 35 weldless eye nut, Fig. 50 eye rod or Fig. 55 welded eye rod to allow flexibility at the rod attachment.
- Material:** Carbon steel (Type 304 or 316 Stainless Steel upon request)
- Finish:** Plain (**Fig. 520**) or electro-galvanized (**Fig. 521**) (Hot dipped galvanized with electro-galvanized hardware upon request)
- Approvals:** Complies with Federal Specification A-A-1192A (Type 4) and Manufacturers' Standardization Society ANSI/MSS SP-58 (Type 4) which supersedes ANSI/MSS SP-69.
- Ordering:** Specify figure number, pipe size, material, and finish.



Pipe Size		B		C		D		Bolt Size	Max. Rec. Load				Wt. Each	
									650°F (343°C)		750°F (399°C)			
									lbs.	kN	lbs.	kN	lbs.	kg
1/2	(15)	3/8	(9.53)	1 9/16	(39.69)	1 1/16	(26.99)	3/8	500	(2.22)	445	(1.98)	.31	(.14)
3/4	(20)	3/8	(9.53)	1 3/4	(44.45)	1 1/4	(31.75)	3/8	500	(2.22)	445	(1.98)	.35	(.16)
1	(25)	3/8	(9.53)	1 7/8	(47.63)	1 3/8	(34.93)	3/8	500	(2.22)	445	(1.98)	.39	(.18)
1 1/4	(32)	3/8	(9.53)	2 1/8	(53.98)	1 5/8	(41.28)	3/8	500	(2.22)	445	(1.98)	.40	(.18)
1 1/2	(40)	3/8	(9.53)	2 1/4	(57.15)	1 3/4	(44.45)	3/8	800	(3.56)	715	(3.18)	.45	(.20)
2	(50)	1/2	(12.70)	2 9/16	(65.09)	2 1/16	(52.39)	1/2	1040	(4.63)	930	(4.14)	.90	(.41)
2 1/2	(65)	5/8	(15.88)	2 13/16	(71.44)	2 5/16	(58.74)	1/2	1040	(4.63)	930	(4.14)	1.10	(.50)
3	(80)	5/8	(15.88)	3 5/16	(84.14)	2 13/16	(71.44)	1/2	1040	(4.63)	930	(4.14)	1.20	(.54)
3 1/2	(90)	5/8	(15.88)	3 1/2	(88.90)	3 3/16	(80.96)	1/2	1040	(4.63)	930	(4.14)	1.25	(.57)
4	(100)	3/4	(19.05)	4 1/8	(104.78)	3 3/8	(85.73)	5/8	1040	(4.63)	930	(4.14)	1.85	(.84)
5	(125)	3/4	(19.05)	4 3/4	(120.65)	4	(101.60)	5/8	1040	(4.63)	930	(4.14)	2.05	(.93)
6	(150)	7/8	(22.23)	5 7/8	(149.23)	4 7/8	(123.83)	3/4	1615	(7.18)	1440	(6.41)	5.06	(2.30)
8	(200)	1	(25.40)	7	(177.80)	6	(152.40)	3/4	1615	(7.18)	1440	(6.41)	6.08	(2.76)
10	(250)	1	(25.40)	8 13/16	(223.84)	7 9/16	(192.09)	7/8	2490	(11.08)	2220	(9.88)	12.81	(5.81)
12	(300)	1	(25.40)	9 7/8	(250.83)	8 7/8	(225.43)	7/8	2490	(11.08)	2220	(9.88)	13.08	(5.93)
14	(350)	1 1/8	(28.58)	11 5/16	(287.34)	9 15/16	(252.41)	7/8	2490	(11.08)	2220	(9.88)	16.70	(7.57)
16	(400)	1 1/8	(28.58)	12 5/8	(320.68)	10 7/8	(276.23)	7/8	2490	(11.08)	2220	(9.88)	23.19	(10.52)
18	(450)	1 1/4	(31.75)	13 3/8	(339.73)	11 5/8	(295.28)	1	3060	(13.61)	2730	(12.14)	33.12	(15.02)
20	(500)	1 3/8	(34.93)	14 5/16	(363.54)	12 9/16	(319.09)	1 1/8	3060	(13.61)	2730	(12.14)	38.66	(17.54)
24	(600)	1 5/8	(41.28)	17 1/4	(438.15)	15 1/2	(393.70)	1 1/4	3060	(13.61)	2730	(12.14)	52.27	(23.71)
30	(750)	2	(50.80)	20 7/8	(530.23)	18 5/8	(473.08)	1 1/2	4000	(17.79)	3520	(15.66)	105.13	(47.69)

Unless otherwise specified, all dimensions on drawings and in charts are in inches and dimensions shown in parentheses are in millimeters.

THREADED ACCESSORIES
CPVC STRAPS
BAND HANGERS
BEAM CLAMPS
CLEVIS HANGERS
PIPE ROLLER SUPPORTS
SPLIT RING HANGERS
PIPE CLAMPS
CENTER LOAD BEAM CLAMPS
PIPE SHIELDS, INSULATION, & SADDLES
PIPE GUIDES & SLIDES
WALL BRACKETS
PIPE SUPPORTS
STRUCTURAL ATTACHMENTS
SEISMIC BRACING