



BRACKETS & BRACE FITTINGS

FIG. 5410 - 5412

2-HOLE 45° KNEE BRACE

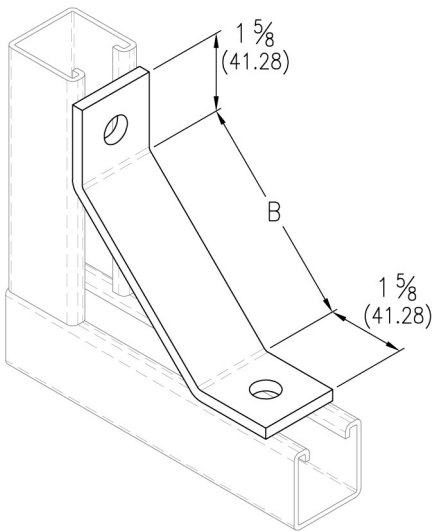


Fig. No.	B		Design Load		Wt. Each	
			lbs.	kN	lbs.	kg
5410	12	(304.80)	1020	(6.67)	1.60	(.73)
5411	16	(406.40)	530	(2.36)	2.18	(.99)
5412	18	(457.20)	450	(2.00)	2.80	(1.27)

FIG. 5420 - 5427

2-HOLE 45° TUBING KNEE BRACE

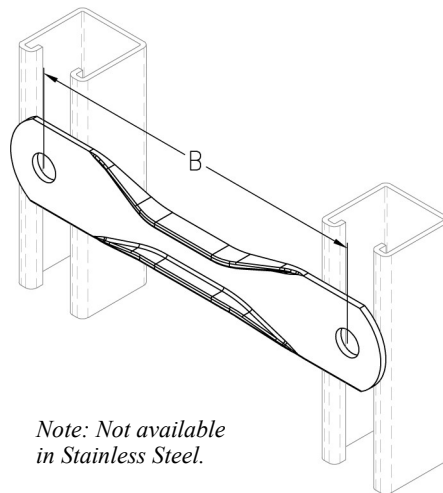


Note: Not available in Stainless Steel.

Fig. No.	B		Design Load		Wt. Each	
			lbs.	kN	lbs.	kg
5420	18	(457.20)	1500	(6.67)	1.45	(.66)
5421	24	(609.60)	1500	(6.67)	1.86	(.84)
5422	30	(762.00)	1500	(6.67)	2.25	(1.02)
5423	36	(914.40)	1500	(6.67)	2.66	(1.21)
5424	42	(1066.80)	1230	(5.47)	3.07	(1.39)
5425	48	(1219.20)	940	(4.18)	3.48	(1.58)
5426	54	(1371.60)	740	(3.29)	3.89	(1.76)
5427	60	(1524.00)	600	(2.67)	4.30	(1.95)

FIG. 5430 - 5440

2-HOLE STRAIGHT TUBING BRACE



Note: Not available in Stainless Steel.

Fig. No.	B		Wt. Each	
			lbs.	kg
5430	18	(457.20)	1.33	(.60)
5431	24	(609.60)	1.74	(.79)
5432	30	(762.00)	2.15	(.98)
5433	36	(914.40)	2.56	(1.16)
5434	42	(1066.80)	2.95	(1.34)
5435	48	(1219.20)	3.35	(1.52)
5436	54	(1371.60)	3.80	(1.72)
5437	60	(1524.00)	4.20	(1.91)
5438	72	(1828.80)	5.00	(2.27)
5439	84	(2133.60)	5.85	(2.65)
5440	96	(2438.40)	6.70	(3.04)

FIG. 6101 - 6122

SHELF BRACKET

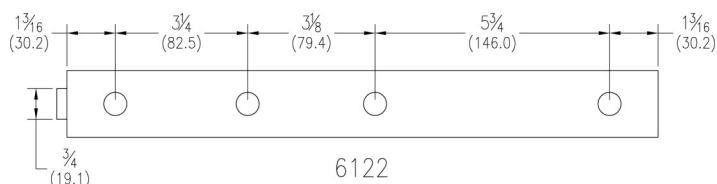
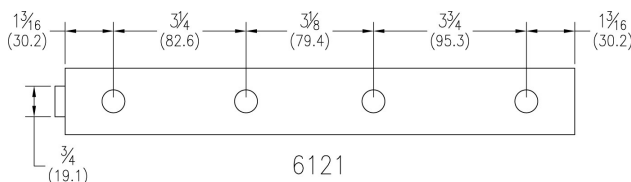
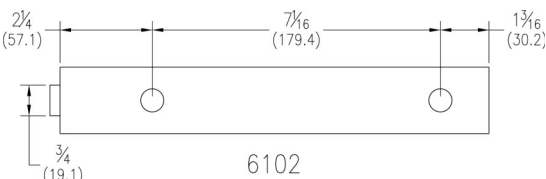
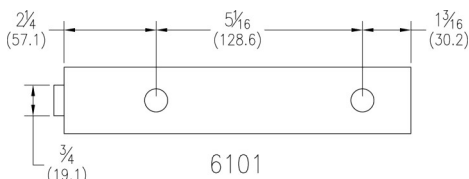
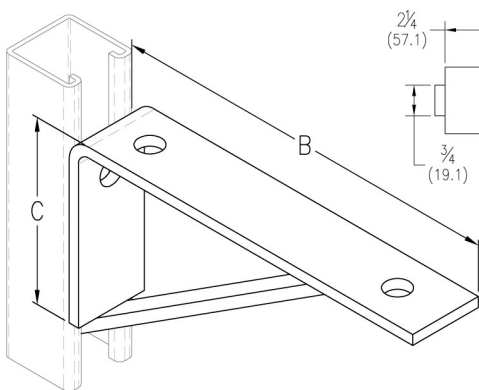


Fig. No.	B		C		Uniform Load		Wt. Each	
					lbs.	kN	lbs.	kg
6101	8 1/2	(215.9)	4	(101.6)	850	(3.78)	1.68	(.76)
6102	10 1/2	(266.7)	4	(101.6)	850	(3.78)	2.02	(.92)
6121	12 1/2	(317.5)	6	(152.4)	900	(4.00)	2.58	(1.17)
6122	14 1/2	(368.3)	6	(152.4)	900	(4.00)	2.95	(1.34)

Note: Loads based on use with PHD 1000 series strut.

Standard Product Information for 1 1/8" (41.3) width series channel fittings (Unless Otherwise Noted)

Hole Diameter: 9/16" (14.3); Hole Spacing-From End: 1 3/16" (20.6); Hole Spacing-On Center: 1 7/8" (47.6); Width: 1 5/8" (41.3); Thickness: 1/4" (6.4)
 Material: Carbon steel (Type 304 or 316 Stainless Steel upon request); Finish: Electro-galvanized (hot-dip galvanized, e-coat, and powder coated upon request)
 Ordering: Specify figure number, material, and finish.

Unless otherwise specified, all dimensions on drawings and in charts are in inches and dimensions shown in parentheses are in millimeters.

BRACKETS & BRACE FITTINGS



FIG. 6123 - 6125

SHELF BRACKET

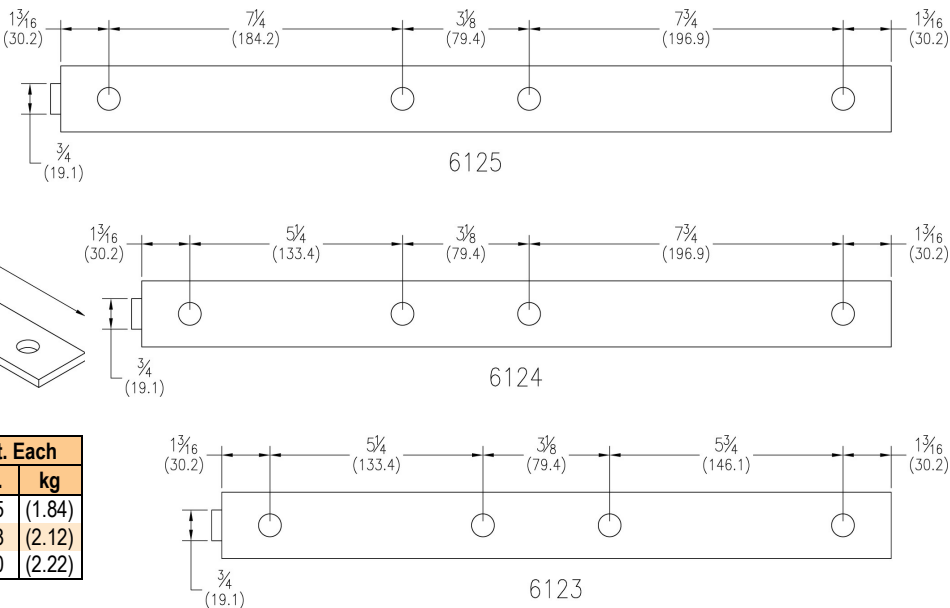
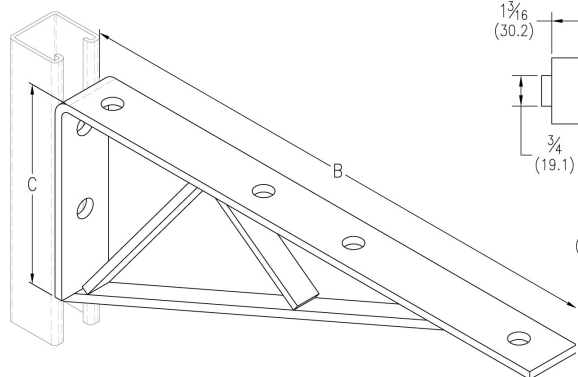


Fig. No.	B		C		Uniform Load		Wt. Each	
	in.	mm.	in.	mm.	lbs.	kN	lbs.	kg
6123	16 1/2	(419.1)	6	(152.4)	1200	(5.34)	4.05	(1.84)
6124	18 1/2	(469.9)	6	(152.4)	1070	(4.76)	4.68	(2.12)
6125	20 1/2	(520.7)	6	(152.4)	600	(2.67)	4.90	(2.22)

Note: Loads based on use with PHD 1000 series strut.

FIG. 6130 - 6135

SINGLE CHANNEL BRACKET

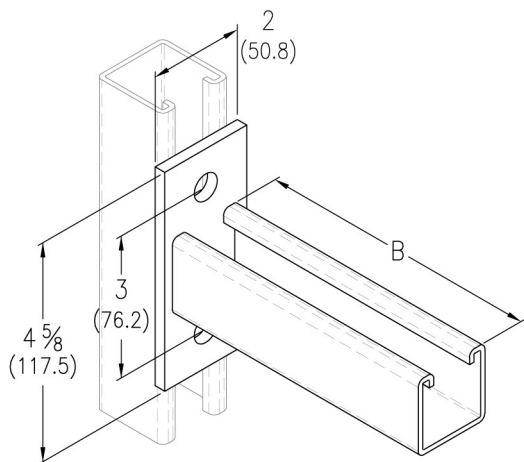


Fig. No.	B		Uniform Load		Wt. Each	
	in.	mm.	lbs.	kN	lbs.	kg
6130	6	(152.40)	1200	(5.34)	1.85	(.84)
6131	9	(228.60)	900	(4.00)	1.95	(.88)
6132	12	(304.80)	600	(2.67)	2.93	(1.33)
6133	14	(355.60)	500	(2.22)	3.20	(1.45)
6134	18	(457.20)	400	(1.78)	4.01	(1.82)
6135	24	(609.60)	300	(1.33)	5.09	(2.31)

Note: Loads based on use with PHD 1000 series strut.

FIG. 6140 - 6144

DOUBLE CHANNEL BRACKET

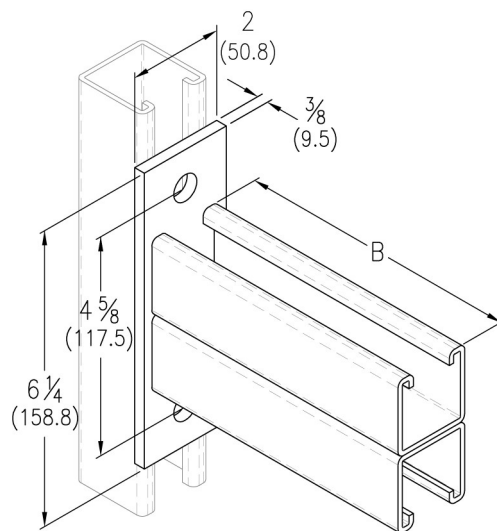


Fig. No.	B		Uniform Load		Wt. Each	
	in.	mm.	lbs.	kN	lbs.	kg
6140	12	(304.80)	2000	(8.90)	5.05	(2.29)
6141	18	(457.20)	1300	(5.78)	7.10	(3.22)
6142	24	(609.60)	1000	(4.45)	9.15	(4.15)
6143	30	(762.00)	800	(3.56)	11.20	(5.08)
6144	36	(914.40)	650	(2.89)	13.25	(6.01)

Note: Loads based on use with PHD 1000 series strut.

Standard Product Information for 1 5/16" (41.3) width series channel fittings (Unless Otherwise Noted)

Hole Diameter: 9/16" (14.3); Hole Spacing-From End: 1 5/16" (20.6); Hole Spacing-On Center: 1 1/8" (47.6); Width: 1 5/8" (41.3); Thickness: 1/4" (6.4)
 Material: Carbon steel (Type 304 or 316 Stainless Steel upon request); Finish: Electro-galvanized (hot-dip galvanized, e-coat, and powder coated upon request)
 Ordering: Specify figure number, material, and finish.

Unless otherwise specified, all dimensions on drawings and in charts are in inches and dimensions shown in parentheses are in millimeters.

CHANNEL
 PIPE & CONDUIT SUPPORTS
 STRUT NUTS & HARDWARE
 CONCRETE INSERTS
 END CAPS & CLOSURES
 FLAT PLATE FITTINGS
 90° ANGLE FITTINGS
 ANGLE FITTINGS
 "U" FITTINGS
 "Z" FITTINGS
 WING FITTINGS
 SPECIALTY FITTINGS
 TROLLEY ASSEMBLIES
 POST BASES
 BRACKETS & BRACE FITTINGS
 BEAM CLAMPS
 ROOFTOP SUPPORTS



www.phd-mfg.com

BRACKETS & BRACE FITTINGS

FIG. 6150 - 6152
BRACED SINGLE BRACKET

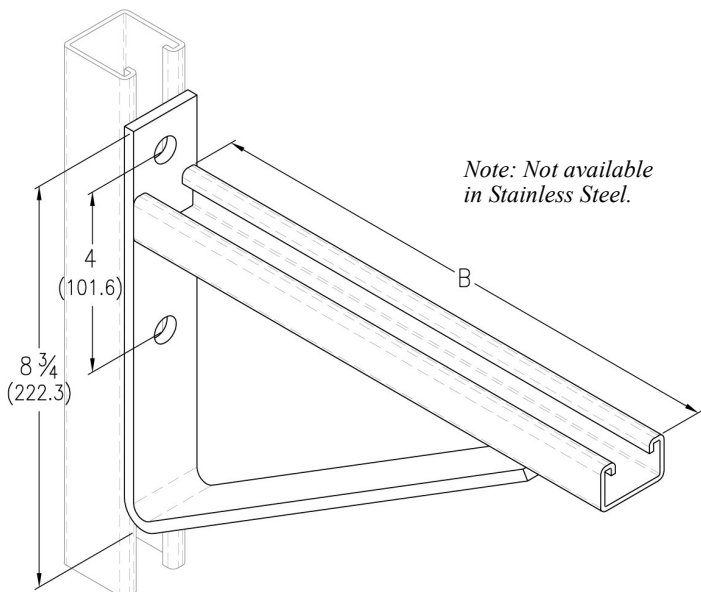
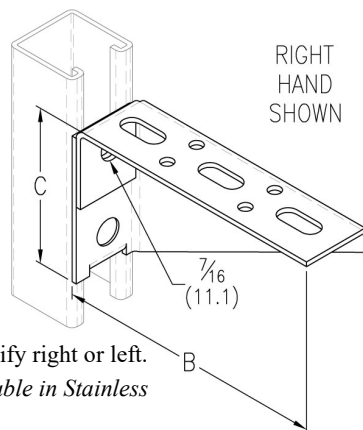


Fig. No.	B		Uniform Load		Wt. Each	
	in.	mm.	lbs.	kN	lbs.	kg
6150	12	(304.80)	1600	(7.12)	3.88	(1.76)
6151	18	(457.20)	850	(3.78)	5.06	(2.30)
6152	24	(609.60)	850	(3.78)	7.20	(3.27)

Note: Loads based on use with PHD 1400 series strut.

FIG. 6160 - 6172
BRACED SINGLE BRACKET



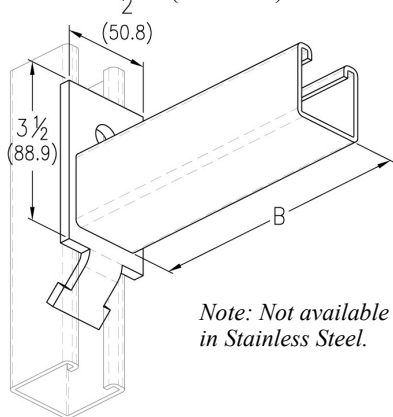
Ordering: Specify right or left.
Note: Not available in Stainless Steel.

Fig. No.	B		C		Uniform Load		Wt. Each	
	in.	mm.	in.	mm.	lbs.	kN	lbs.	kg
6160	24	(609.6)	6 ⁷ / ₁₆	(163.51)	225	(1.00)	3.70	(1.68)
6161	26	(660.4)	6 ¹⁵ / ₁₆	(176.21)	225	(1.00)	4.25	(1.93)
6162	28	(711.2)	7 ⁷ / ₁₆	(188.91)	225	(1.00)	4.80	(2.18)
6163	30	(762.0)	7 ¹⁵ / ₁₆	(201.61)	225	(1.00)	5.20	(2.36)
6164	12	(304.8)	3 ⁷ / ₁₆	(87.31)	275	(1.22)	1.43	(.65)
6165	14	(355.6)	3 ¹⁵ / ₁₆	(100.01)	275	(1.22)	1.62	(.73)
6166	16	(406.4)	4 ⁷ / ₁₆	(112.71)	275	(1.22)	2.04	(.93)
6167	18	(457.2)	4 ¹⁵ / ₁₆	(125.41)	275	(1.22)	2.32	(1.05)
6168	20	(508.0)	5 ⁷ / ₁₆	(138.11)	250	(1.11)	2.75	(1.25)
6169	22	(558.8)	5 ¹⁵ / ₁₆	(150.81)	250	(1.11)	3.17	(1.44)
6170	6	(152.4)	1 ¹⁵ / ₁₆	(49.21)	275	(1.22)	.58	(.26)
6171	8	(203.2)	2 ⁷ / ₁₆	(61.91)	275	(1.22)	.82	(.37)
6172	10	(254.0)	2 ¹⁵ / ₁₆	(74.61)	275	(1.22)	1.03	(.47)

Note: Loads based on use with PHD 1000 series strut.

FIG. 6202 - 6208

INTERLOCKING CHANNEL BRACKET (SLOT UP)



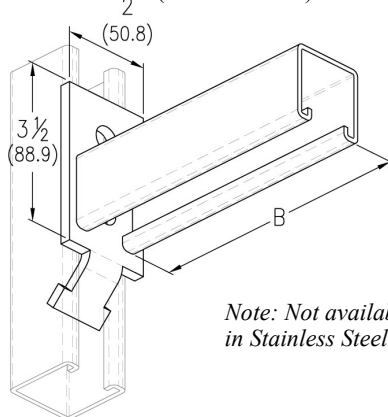
Note: Not available in Stainless Steel.

Fig. No.	B		Uniform Load		Wt. Each	
	in.	mm.	lbs.	kN	lbs.	kg
6202	6	(152.40)	1200	(5.34)	1.50	(.68)
6204	12	(304.80)	600	(2.67)	2.50	(1.13)
6206	18	(457.20)	400	(1.78)	3.50	(1.59)
6208	24	(609.60)	300	(1.33)	4.50	(2.04)

Note: Loads based on use with PHD 1000 series strut.

FIG. 6212 - 6218

INTERLOCKING CHANNEL BRACKET (SLOT DOWN)



Note: Not available in Stainless Steel.

Fig. No.	B		Uniform Load		Wt. Each	
	in.	mm.	lbs.	kN	lbs.	kg
6212	6	(152.40)	1200	(5.34)	1.50	(.68)
6214	12	(304.80)	600	(2.67)	2.50	(1.13)
6216	18	(457.20)	400	(1.78)	3.50	(1.59)
6218	24	(609.60)	300	(1.33)	4.50	(2.04)

Note: Loads based on use with PHD 1000 series strut.

FIG. 6222 & 6224

WRAP-AROUND CHANNEL BRACKET (SLOT UP)

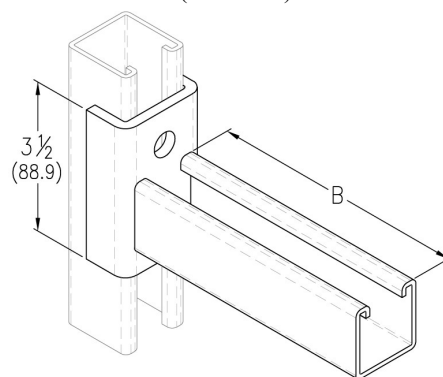


Fig. No.	B		Uniform Load		Wt. Each	
	in.	mm.	lbs.	kN	lbs.	kg
6222	6	(152.4)	1600	(7.12)	1.90	(.86)
6224	12	(304.8)	800	(3.56)	2.75	(1.25)

Note: Loads based on use with PHD 1000 series strut.

Standard Product Information for 1 1/8" (41.3) width series channel fittings (Unless Otherwise Noted)

Hole Diameter: 9/16" (14.3); Hole Spacing-From End: 1 3/16" (20.6); Hole Spacing-On Center: 1 7/8" (47.6); Width: 1 5/8" (41.3); Thickness: 1/4" (6.4)
Material: Carbon steel (Type 304 or 316 Stainless Steel upon request); Finish: Electro-galvanized (hot-dip galvanized, e-coat, and powder coated upon request)
Ordering: Specify figure number, material, and finish.

Unless otherwise specified, all dimensions on drawings and in charts are in inches and dimensions shown in parentheses are in millimeters.

BRACKETS & BRACE FITTINGS



CHANNEL
PIPE & CONDUIT SUPPORTS
STRUT NUTS & HARDWARE
CONCRETE INSERTS
END CAPS & CLOSURES
FLAT PLATE FITTINGS
90° ANGLE FITTINGS
ANGLE FITTINGS
"U" FITTINGS
"Z" FITTINGS
WING FITTINGS
SPECIALTY FITTINGS
TROLLEY ASSEMBLIES
POST BASES
BRACKETS & BRACE FITTINGS
BEAM CLAMPS
ROOFTOP SUPPORTS

FIG. 6232 & 6234

WRAP-AROUND CHANNEL BRACKET (SLOT DOWN)

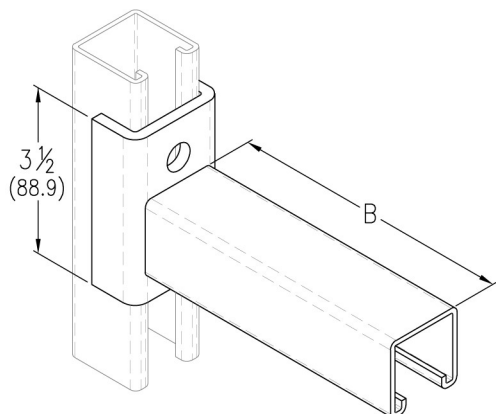


Fig. No.	B		Uniform Load		Wt. Each	
			lbs.	kN	lbs.	kg
6232	6	(152.4)	1600	(7.12)	1.90	(.86)
6234	12	(304.8)	800	(3.56)	2.75	(1.25)

Note: Loads based on use with PHD 1000 series strut.

FIG. 6246 & 6248

WRAP-AROUND CHANNEL BRACKET (SLOT UP)

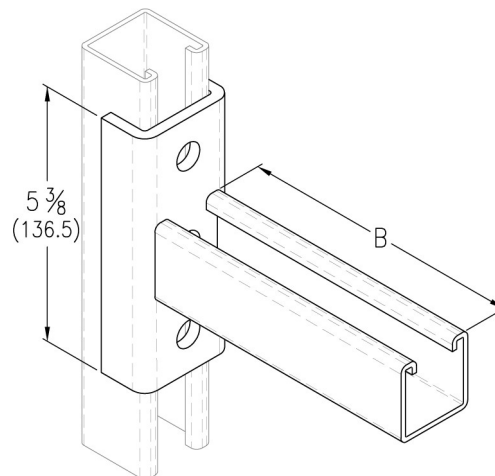
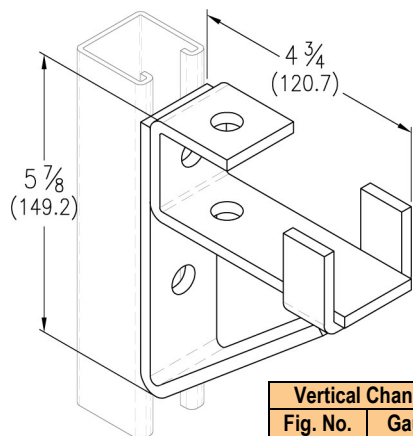


Fig. No.	B		Uniform Load		Wt. Each	
			lbs.	kN	lbs.	kg
6246	18	(457.2)	600	(2.67)	4.30	(1.95)
6248	24	(609.6)	450	(2.00)	5.10	(2.31)

Note: Loads based on use with PHD 1000 series strut.

FIG. 6305

SINGLE CHANNEL BRACKET SUPPORT FOR 1 5/8" TALL STRUT



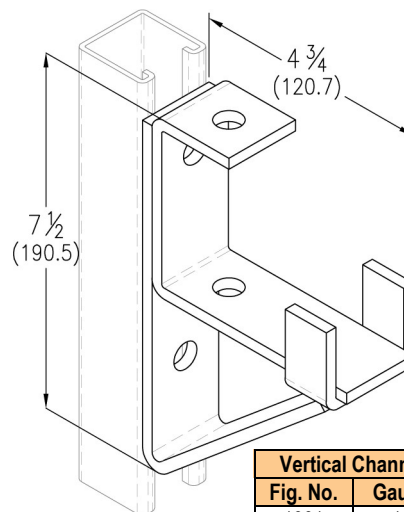
Wt. Each	
lbs.	kg
2.10	(.95)

Vertical Channel		Allowable Moment	
Fig. No.	Gauge	In. - lbs.	N*m
1001	12	6300	(711.8)
1101	14	4400	(497.1)

Note: Allowable moment for fitting only. Channel may determine overall capacity.

FIG. 6310

DOUBLE CHANNEL BRACKET SUPPORT FOR 3 1/4" TALL STRUT



Wt. Each	
lbs.	kg
2.10	(.95)

Vertical Channel		Allowable Moment	
Fig. No.	Gauge	In. - lbs.	N*m
1001	12	13000	(1468.8)
1101	14	9100	(1028.2)

Note: Allowable moment for fitting only. Channel may determine overall capacity.

Standard Product Information for 1 5/8" (41.3) width series channel fittings (Unless Otherwise Noted)

Hole Diameter: 9/16" (14.3); Hole Spacing-From End: 1 3/16" (20.6); Hole Spacing-On Center: 1 7/8" (47.6); Width: 1 5/8" (41.3); Thickness: 1/4" (6.4)
 Material: Carbon steel (Type 304 or 316 Stainless Steel upon request); Finish: Electro-galvanized (hot-dip galvanized, e-coat, and powder coated upon request)
 Ordering: Specify figure number, material, and finish.

Unless otherwise specified, all dimensions on drawings and in charts are in inches and dimensions shown in parentheses are in millimeters.