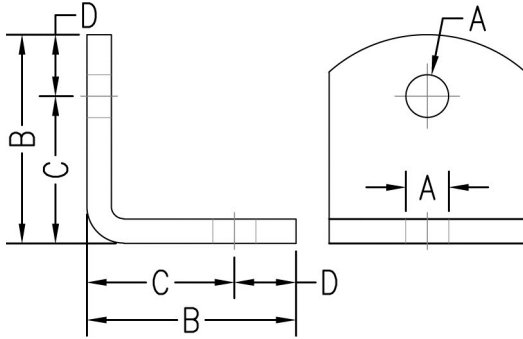


FIG. 920

SIDE BEAM ANGLE BRACKET



Function: Designed for use with wood, concrete, or steel beams to provide a means for supporting hanger rod. When used on steel beams Fig. 920 can be welded or bolted in place.

Material: Carbon steel (Type 304 or 316 Stainless Steel upon request)

Finish: Plain or electro-galvanized (Hot dipped galvanized upon request)

Approvals: Complies with Federal Specification A-A-1192A (Type 34) and Manufacturers' Standardization Society ANSI/MSS SP-58 (Type 34) which supersedes ANSI/MSS SP-69.

Ordering: Specify figure number, rod size, material, and finish.

Rod Size A	For Pipe Size		B		C		D		Max. Rec. Load				Wt. Each	
									Lag Screw		Bolted to Steel		lbs.	kg
									lbs.	kN	lbs.	kN		
3/8	1/2 to 2	(15 to 50)	2 1/8	(53.98)	1 1/2	(38.10)	5/8	(15.88)	390	(1.73)	580	(2.58)	.52	(.24)
1/2	2 1/2 to 3 1/2	(65 to 90)	2 1/8	(53.98)	1 1/2	(38.10)	5/8	(15.88)	640	(2.85)	960	(4.27)	.50	(.23)
5/8	4 to 5	(100 to 125)	2 1/2	(63.50)	1 1/2	(38.10)	1	(25.40)	760	(3.38)	1500	(6.67)	.75	(.34)
3/4	6 to 8	(150 to 200)	2 1/2	(63.50)	1 1/2	(38.10)	1	(25.40)	830	(3.69)	2500	(11.12)	.73	(.33)
7/8	10 to 12	(250 to 300)	3 1/4	(82.55)	2 1/4	(57.15)	1	(25.40)	830	(3.69)	3600	(16.01)	1.38	(.63)