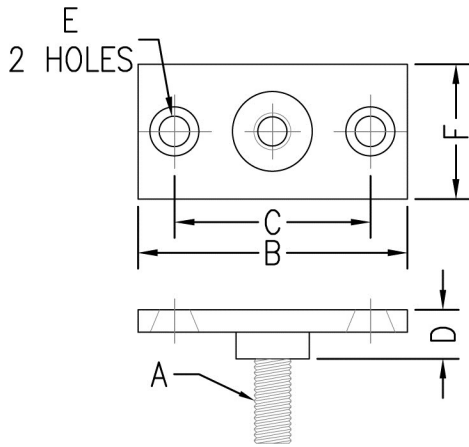


FIG. 940, 941, & 942

CEILING FLANGE



- Function:** Designed to provide a means for attaching hanger rod to wood beams or ceilings.
- Material:** Malleable iron (Type 304 or 316 Stainless Steel upon request for $\frac{3}{8}$ " only)
- Finish:** Plain (**Fig. 940**), electro-galvanized (**Fig. 941**), or copper color epoxy finish (**Fig. 942**)
- Ordering:** Specify figure number, rod size, material, and finish.

Rod Size A	B		C		D		E		F		Max. Rec. Load		Wt. Each	
	in.	mm	in.	mm	in.	mm	in.	mm	in.	mm	lbs.	kN	lbs.	kg
$\frac{3}{8}$	$2\frac{3}{4}$	(69.85)	2	(50.8)	$\frac{1}{2}$	(12.7)	$\frac{5}{16}$	(7.94)	$1\frac{3}{8}$	(34.93)	180	(0.8)	.18	(.08)
$\frac{1}{2}$	$2\frac{3}{4}$	(69.85)	2	(50.8)	$\frac{1}{2}$	(12.7)	$\frac{5}{16}$	(7.94)	$1\frac{3}{8}$	(34.93)	180	(0.8)	.18	(.08)

* $\frac{3}{8}$ " rod sizes are only available in type 304 or 316 stainless steel. For non stainless steel $\frac{3}{8}$ " rod size, see Fig. 945 (electro-galvanized) or Fig. 946 (copper finish) Steel Ceiling Plate.

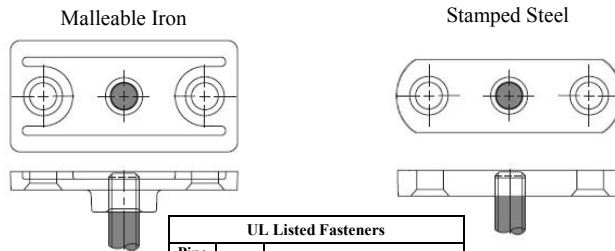


PHD Manufacturing, Inc.

44018 Columbiana-Waterford Road
 Columbiana, Ohio 44408-9481
 Phone: 800-321-2736 • 330-482-9256
 Fax: 330-482-2763
 Web: www.phd-mfg.com

FIGURE 940/941 INSTALLATION INSTRUCTIONS

- FUNCTION:** Designed to provide a means for attaching hanger rod to wood beams, ceilings, metal decks or walls.
- APPROVALS:** Underwriters Laboratories listed for US and Canada
- MATERIAL:** Carbon Steel or Malleable Iron
- FINISH:** Plain (940) or Electro-galvanized (941)
- WARNINGS:** The safety of the total system involves a system designer, installer, and user. The manufacturer has limited or no control over such factors as environmental conditions, total system design, product selection, and maintenance. The installer is responsible for the application to conform to local codes, the integrity of attaching structure, and the use of proper fasteners. Failure to follow these specifications may result in product malfunction. All load ratings are for static conditions and neglect dynamic loading of any kind. Observe all safety regulations for your surroundings while installing.
- INSTALLATION:** Attach Fig. 940/941 to structure using two #18 X 1 1/2" wood screws or two 5/16" X 1 1/2" lag screws when attaching to wood structure. Refer to NFPA13 when utilizing Fig. 940/941 in fire protection system or when attaching to structure other than wood. A 3/8" threaded rod can then be threaded into the mounted Fig. 940/941 and used to support piping.



UL Listed Fasteners		
Pipe Size	Qty.	When Using This fastener
2	2	#18 X 1 1/2" Wood Screws
2	2	5/16" X 1 1/2" Lag Screws

The Complete Line of Pipe Supports and Devices
 Pipe Hangers ▲ Strut & Accessories ▲ Pipe Clamps ▲ Beam Clamps ▲ Shields