

Band Clamp Hand Tools

Locking Hand Tool

Applications

- For application of punch type 3/8" and 5/8" band clamps
- For use with F-series only

Part #
F38



Intermediate Hand Tool

Application

- For application of 3/8" and 5/8" band clamps

Part #
F40



Hand Tool for 5/8" Clamps

Application

- For application of 5/8" band clamps

Feature

- Imported

Part #
F1



Hand Tool for 3/8" & 5/8" Clamps

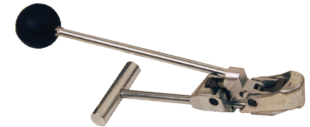
Application

- For application of 3/8" and 5/8" band clamps

Feature

- Made in the USA

Part #
F100

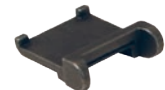


Adapter for F100 Tool

Application

- 3/8" clamp adapter for F100 tool only

Part #
F229



Flexible Hose Clamp Driver

Application

- Flexible shaft and no-slip grip provide 90° access and work best in hard-to-reach places such as compact car and boat engines, as well as plumbing repair applications

Features

- Socket fits mini and standard hose clamp screw heads
- Flip the socket for the desired size of 1/4" or 5/16"

Socket Size	Part #
1/4" or 5/16"	FHCD

