

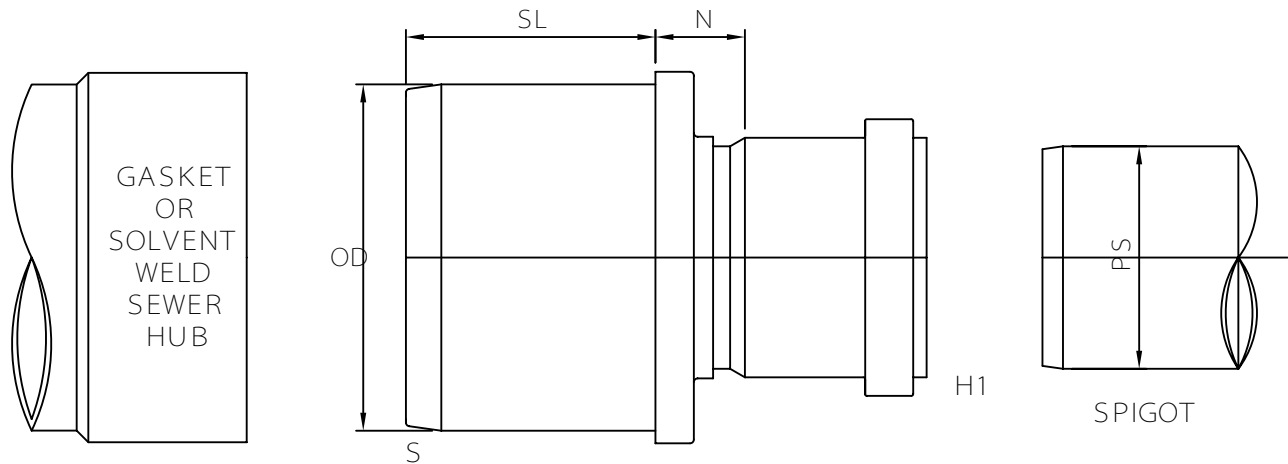


MULTI FITTINGS

# LAYING LENGTH

ISSUE DATE: OCT 30/17  
SUPERCEDES: MAR 11/05

## EXTENDED BUSHING (SxG)



## FABRICATED FITTING (F)

	SIZE SxH1	PART NUMBER	N REF	SL REF	OD	PS (SEWER)
F @	10x4	043368	5.000	8.000	10.500	4.215
F @	15x4	043369	5.500	11.000	15.300	4.215
F @	15x6	043300	5.500	11.000	15.300	6.275
F @	15x8	043370	5.500	11.000	15.300	8.400
F @	18x6	043796	5.000	14.000	18.701	6.275
F @	18x8	043538	5.250	14.250	18.701	8.400
F @	18x10	043678	7.000	14.000	18.701	10.500
F @	18x12	043629	6.750	14.000	18.701	12.500
F @	21x8	043167	6.000	15.000	22.047	8.400
F @	21x12	043525	8.000	14.000	22.047	12.500
F @	24x8	043992	-	-	24.803	8.400
F @	24x12	043047	7.500	14.000	24.803	12.500
F @	24x15	043048	7.750	14.000	24.803	15.300
F @	27x12	043635	-	-	27.953	12.500
-	27x15	-	-	-	27.953	15.300
P	27x18	043634	-	-	27.953	18.701
F @	27x21	043676	9.000	14.500	27.953	22.047

Note: @ Refer to Page G5 for Hub Detail, Fabricated