

ONLY ONE COMPANY MAKES 10" & 15" INJECTION MOLDED GASKETED SEWER FITTINGS



Multi Fittings is the only manufacturer to offer gasketed 12" and 15" SDR 35 molded sewer fittings in a range of wyes, tees and elbows.

Ideal for wastewater and stormwater applications, as well as the conveyance of industrial wastes, our large diameter molded sewer fittings are designed to exceed all applicable standards and are built to withstand higher impact forces, higher loads and survive the roughest jobsite handling. The impact strength of our sewer fittings exceed the requirements of ASTM F1336 by at least 25%.

For over 50 years, Multi Fittings has been an industry leader in offering the most comprehensively engineered and tested fittings for plastic pipe in North America.

Multi Fittings produces the widest range of injection molded fittings for pressurized watermains and sewer forcemains, gravity flow sewers and drain, waste and vent applications.

TRENCH TOUGH PLUS™

SIZES

4" & 15"

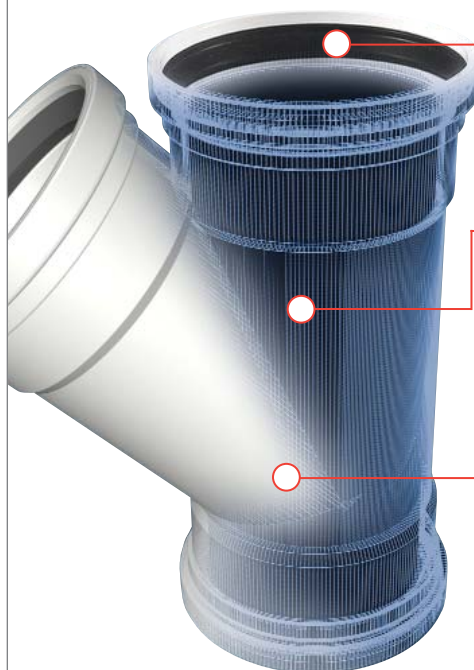


MULTI FITTINGS

Telephone: 519 681-2140

Toll Free: 800 265-1815

Fax: 519 681-2156



Locked-in Gasket Design

Makes assembling the joints easy, requiring less brute force in the trench, while ensuring leak-proof reliability in the ground.

Advanced Material Formulation

Leading crush-resistance, yet our fittings can flex to accommodate the extreme loads that cause rigid fittings to fail.

Structural Reinforcements

Reinforced at key intersecting locations where it's needed for added strength without losing flexibility.

more information on back ►

FEATURES & BENEFITS

Easy to Install

Lightweight and easy to handle; with the patented Trench Tough Plus locked-in gasket design.

Joint Strength

Manufactured to allow for a high degree of joint deflection, reducing the risks caused by soil settlement or shifting.

Structural Strength

Leads the industry in crush-resistance and able to handle extreme loads underground.

Impact Strength

Designed to withstand the rigors of the job site, exceeding ASTM impact standards.



Telephone: 519 681-2140
Toll Free: 800 265-1815
Fax: 519 681-2156

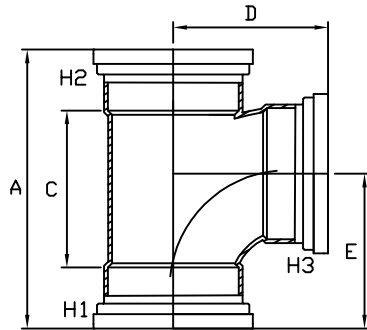


MULTI FITTINGS

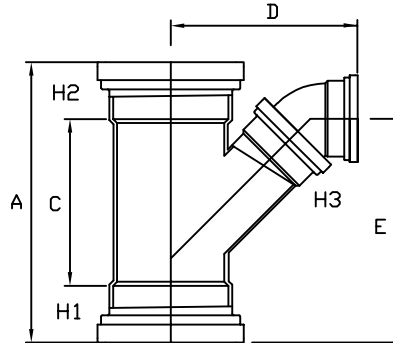
LAYING LENGTH

ISSUE DATE: OCT 30/17
SUPERCEDES: MAR 11/05

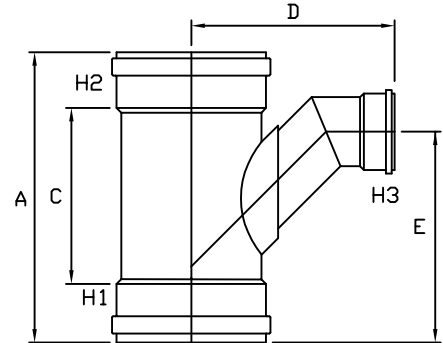
TEE WYE (GxGxG)



INJECTION MOLDED FITTING (M)



INJECTION MOLDED FITTING (A)



FABRICATED FITTING (F)

	SIZE H1xH2xH3	PART NUMBER	A REF	C REF	D REF	E REF
<>M =	4x4x4	043156	11. 125	6. 000	6. 000	6. 750
M =	6x6x4	043158	11. 625	5. 750	6. 500	6. 750
M =	6x6x6	043449	14. 625	8. 750	8. 375	9. 000
<>M =	8x8x4	043159	12. 875	6. 000	8. 250	7. 500
M =	8x8x6	043160	15. 000	8. 125	8. 500	8. 500
A =	8x8x8	043450	19. 000	12. 125	17. 000	17. 125
<>M =	10x10x4	143693	17. 125	9. 375	8. 875	9. 875
M =	10x10x6	143451	17. 125	9. 375	10. 000	9. 875
A =	10x10x8	043452	22. 750	15. 000	17. 750	18. 750
A =	10x10x10	043014	22. 750	15. 000	20. 750	20. 750
<>M =	12x12x4	143453	18. 125	9. 250	9. 750	10. 500
M =	12x12x6	143454	18. 125	9. 250	11. 250	10. 500
A =	12x12x8	043455	26. 750	17. 875	18. 750	20. 625
A =	12x12x10	043694	26. 750	17. 875	21. 375	22. 250
A =	12x12x12	043489	26. 625	17. 875	24. 625	24. 500
A =	15x15x4	043456	22. 250	12. 750	15. 250	15. 250
A =	15x15x6	043457	22. 250	12. 750	17. 625	17. 500
A =	15x15x8	043458	22. 250	12. 750	20. 625	19. 000
F @	15x15x15	043012	-	-	-	-
F @	18x18x4	043999	40. 000	17. 500	19. 000	22. 000
F @	18x18x6	043459	40. 000	17. 500	22. 000	27. 500
F @	18x18x8	043460	-	-	-	-
F @	18x18x18	043017	-	-	-	-
F @	24x24x6	043290	48. 000	21. 500	27. 400	30. 000

Note: = Refer to Page G4 for Hub Detail, Type A

@ Refer to Page G5 for Hub Detail, Fabricated

<> 4" Deep hub