

Rev. 4-14 Shaded area indicates changes

- Catalog number---
A-2600-06BB flanged ends, with bronze disc facing
A-2602-06B1 flanged ends, with rubber disc facing
- Sizes – 2", 2-1/2", 3", 4", 6", 8", 10", 12"
- Meets all applicable parts of ANSI/AWWA C508 Standard
- Epoxy coated interior & exterior for corrosion resistance
- Certified to ANSI/NSF 61
- Flanged end dimensions and drilling comply with ANSI B16.1
- Iron body, bronze mounted (IBBM)
- Choice of bronze or rubber disc facing
- For horizontal installation only
- O-ring sealed stuffing box
- Swing type, gravity operated
- 200 psig (1400 kPa/14 barg) maximum working pressure, 400 psig (2800 kPa/28 barg) test pressure



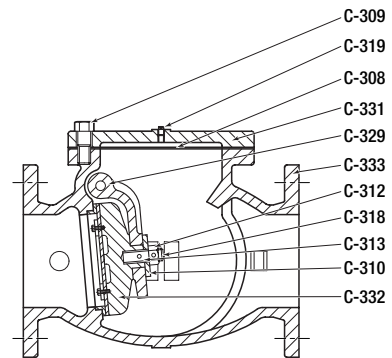
A-2600-06BB

Options

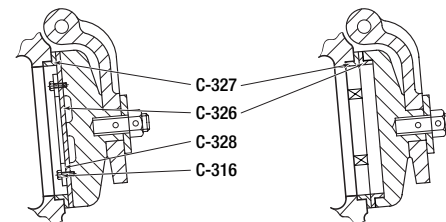
- PN 10/PN 16 Flange Drilling 4"-12"
- Stainless Steel Nuts & Bolts
- Tapped Bosses

Check Valve Parts (2011-present)

Catalog Part No.	Description	Material	Material Standard
C-305	Hinge Plug	Brass	ANSI B21
C-308	Gasket	Rubber	ASTM D2000, BK 807
C-309	Cover Bolt	Zinc Coated Steel	ASTM A307 Grade B
C-310	Washer	Brass	ANSI B21
C-311	Spacer	Brass	ANSI B21
C-312	Disc Nut	Brass	ANSI B21
C-313	Disc Stud	Brass	ANSI B21
C-318	Pin	Stainless Steel	ASTM A276 Type 304
C-319	Test Plug	Malleable Iron	ASTM A47
C-321	Hinge Pin	Stainless Steel	ASTM A276 Type 304
C-327	Body Seat Ring	Bronze	ANSI B62
C-329	Arm	Ductile Iron	ASTM A536 ▼
C-331	Cover	Cast Iron	ASTM A126 Cl. B
C-332	Disc	Cast Iron	ASTM A126 Cl. B
C-333	Body	Cast Iron	ASTM A126 Cl. B
Rubber Faced Disc Parts			
C-316	Disc Seat Bolt	Stainless Steel	ASTM A276 Type 304
C-326	Disc Seat Ring	Rubber	ASTM D2000, BK 807
C-328	Seat Holder	Cast Iron*	ASTM A126 Cl. B
Bronze Faced Disc Parts			
C-326	Disc Seat Ring	Bronze	ANSI B62

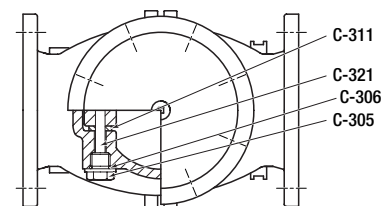


**Valve body and clapper
Rubber faced disc shown**



Rubber faced disc clapper

Bronze faced disc clapper

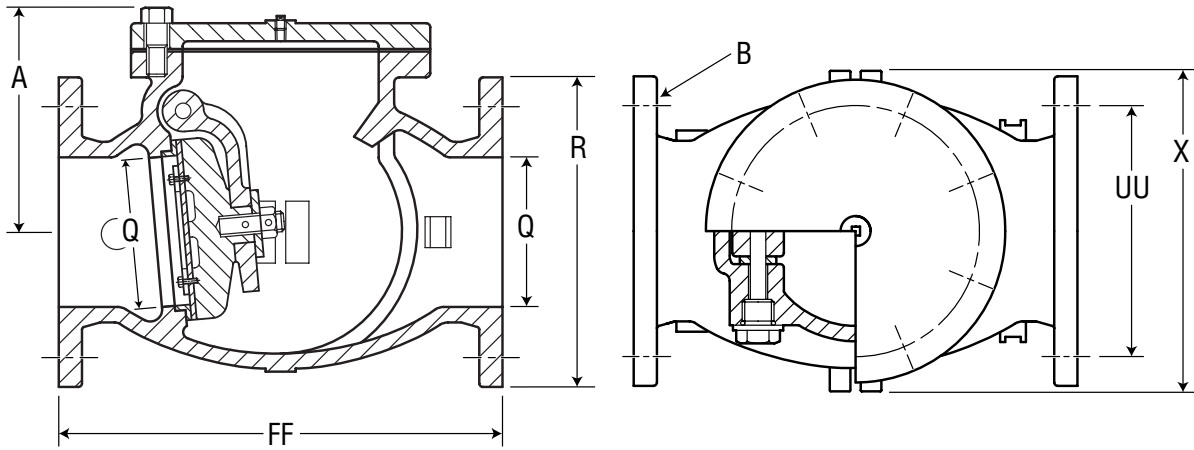


Hinge pin and stuffing box

*2"- 6" sizes are cast iron, ASTM A126 Cl. B, 8"- 12" sizes are ductile iron ASTM A536
▼ Material strength ASTM A536 65-45-12 minimum

2"-12" SWING TYPE GRAVITY OPERATED CHECK VALVE DIMENSIONS - FL. X FL.

Shaded area indicates change Rev. 5-15



Dimension**	Size*			
	2"	2-1/2"	3"	4"
Q (bore)	2.00	2.50	3.00	4.00
R	6.00	7.00	7.50	9.00
FF	8.00	8.50	9.50	11.50
A	4.94	5.69	6.06	6.88
X	5.63	7.13	8.13	9.88
B (number and size of bolts)	4--.75	4--.75	4--.75	8--.75
UU (bolt circle diameter)	4.75	5.50	6.00	7.50
Weight	34	50	60	80

Dimension**	Size*			
	6"	8"	10"	12"
Q (bore)	6.00	8.00	10.00	12.00
R	11.00	13.50	16.00	19.00
FF	14.00	19.50	24.50	27.50
A	8.50	9.94	11.19	13.56
X	11.88	16.13	18.38	21.63
B (number and size of bolts)	8--.88	8--.88	12--1.00	12--1.00
UU (bolt circle diameter)	9.50	11.75	14.25	17.00
Weight	151	267	405	611

*Nominal

**All dimensions are in inches. All weights are in pounds and are approximate.