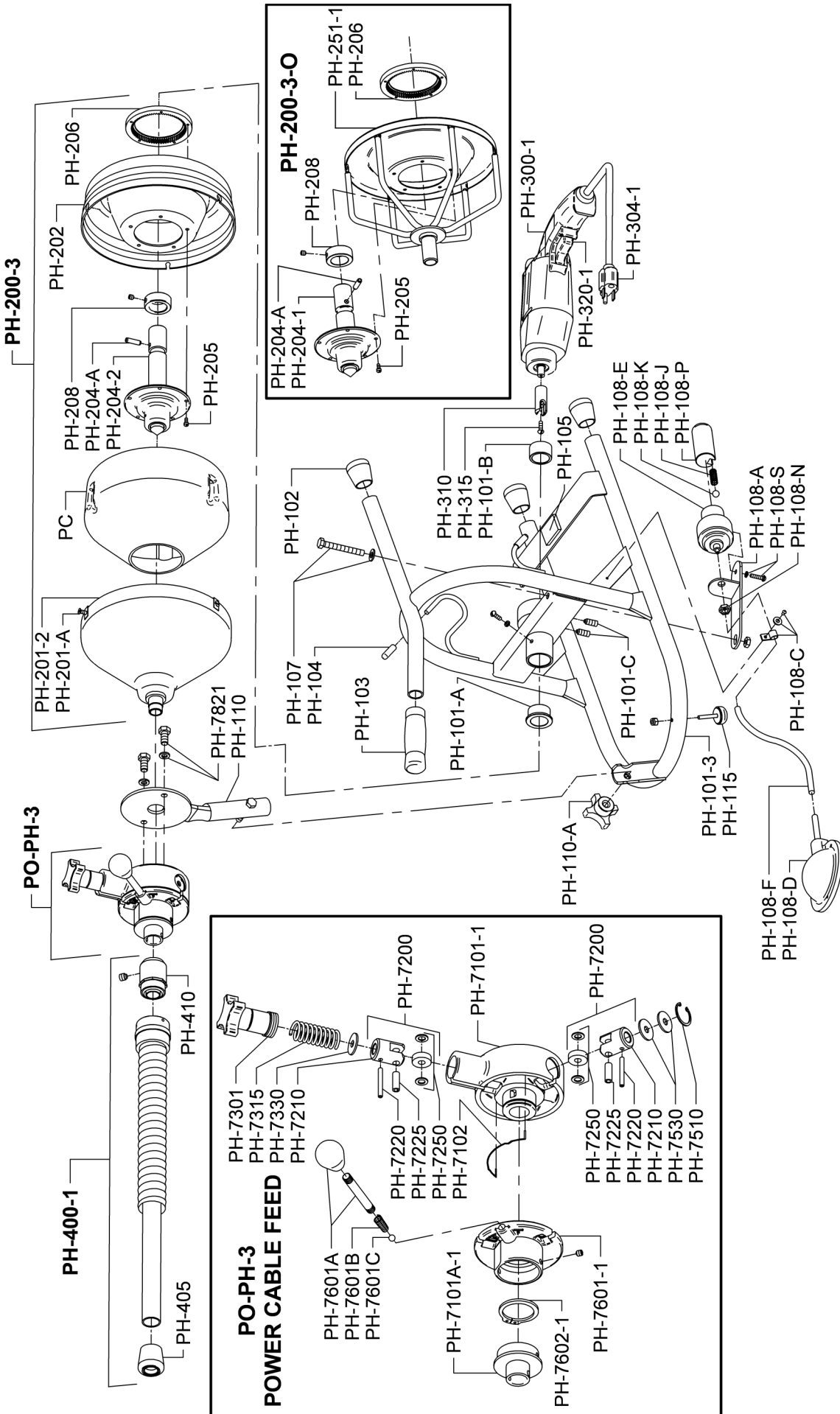


## DRAIN-ROOTER PH PARTS LIST

CAT. NO.	DESCRIPTION	CAT. NO.	DESCRIPTION
PH-100	Complete Frame Assy. (Skil #81596 Motor)	PH-310	Drive Yoke
PH-100-1	Complete Frame Assy. (Skil #6355-GWS Motor)	PH-315	Reverse Thread Screw
PH-100-2	Complete Frame Assy. (No Front Post)	PH-320	Trigger Switch for Skil #81596
PH-100-3	Complete Frame Assy. (for Variable Speed Feed)	PH-320-1	Trigger Switch for Skil #6355-GWS
PH-101	Frame Only (Skil #81596 Motor)	PH-400	Guide Hose for Non-Variable Speed Feed
PH-101-1	Frame Only (Skil #6355-GWS Motor)	PH-400-A	Set Screw
PH-101-2	Frame Only (No Front Post)	PH-400-1	Guide Hose for Variable Speed Feed
PH-101-3	Frame Only (for Variable Speed Feed)	PH-405	Rubber Tip
PH-101-A	Front Bushing	PH-410	Spring Pin Connector Assembly
PH-101-B	Rear Bushing	PO-PH-1	Power Cable Feed (Non-Variable)
PH-101-C	Bronze-Tipped Set Screws (2)	PH-750	Sleeve
PH-101-D	Shaft Retaining Screw w/Lock Washer	PH-755	Sleeve Stop
PH-101-E	Motor Support Adjusting Screw	PH-761	Feed Housing
PH-102	Rubber Leg Tips (3)	PH-762	Feed Lever
PH-103	Grip Handle	PH-762-A	Sleeve
PH-104	Rubber Cord Wrap Tips (2)	PH-764	Pressure Spring
PH-105	Foam Pad	PH-768	Phillips Head Screw
PH-107	Nut, Bolt, & Washer for Actuator Bracket	PH-769	Feed Lever Pin
PH-108	Switch Actuator Assembly	PH-771	Feed Roller Assembly (Incl. PH-772, 773, 774)
PH-108-A	Switch Actuator Bracket	PH-772	Carrier
PH-108-B	Foot Pedal and Hose	PH-773	Feed Roller with Washers
PH-108-C	Cable Tie	PH-774	Shaft Pin
PH-108-E	Switch Actuator and Cylinder	PH-777	Bottom Feed Roller
PH-108-J	Spring	PH-778	Bottom Roller Retaining Screw
PH-108-K	Ball	PH-780	Feed Cover Plate
PH-108-N	Nut	PH-781	Plate Retaining Screws (3)
PH-108-P	Piston	PH-785	Feed Lever Retaining Latch, Screw, & Washer
PH-108-S	Screw and Washer	PO-PH-3	Variable Speed Cable Feed
PH-110	Front Post	PH-7101	Feed Body
PH-110-A	Front Post Knob	PH-7101-A	Spout
PH-115	Rubber Feet, Bolts, & Locknuts (2)	PH-7101-B	Bolt - Discontinued
PH-200	Container Complete (Skil #81596 Motor)	PH-7101-C	Lock Washer - Discontinued
PH-200-1	Container Complete (Skil #6355-GWS Motor)	PH-7102	Lifting Spring
PH-200-2	Container Complete (No Front Post)	PH-7200	Feed Roller Assembly
PH-200-3	Container Complete (for Variable Speed Feed)	PH-7210	Carrier Only
PH-201	Container Front with Spindle (Front Post)	PH-7220	Swing Pin
PH-201-1	Container Front with Spindle (No Front Post)	PH-7225	Roller Shaft
PH-201-2	Container Complete (No Front Post)	PH-7250	Feed Roller
PH-201-A	Screws and Clips (3)	PH-7301	Feed Pressure Knob Assembly
PH-202	Container Back	PH-7315	Pressure Spring
PH-204	Hub for Skil Model #81596	PH-7330	Thrust Washer
PH-204-2	Hub for Skil #6355-GWS	PH-7510	Bottom Assembly Snap Ring
PH-204-2-A	Roll Pin	PH-7530	Bottom Assembly Thrust Washers (2)
PH-205	Screws and Nuts for Hub (5)	PH-7601	Feed Control Disc with Lever & Knob
PH-206	Internal Ring Gear	PH-7601-A	Lever and Knob
PH-208	Collar	PH-7601-B	Set Screws
PH-208-A	Set Screw	PH-7601-C	Spring
PH-300	Skil Motor Assembly - Model #81596	PH-7601-D	Retaining Bolt - Discontinued
PH-300-1	Skil Motor Assembly - Model 6355-GWS	PH-7602	Control Disc Retaining Snap Ring
PH-M-S	Skil Motor Only - Model #81596	PO-PH-703	Set of Feed Rollers Assemblies (3)
PH-M-S2	Skil Motor Only - Model #6355-GWS	PO-PH-703-1	Set of Feed Rollers Assemblies (3) (Non-Variable)
PH-304	Power Cord for Skil Model #81596	PC	Plastic Cartridge
PH-304-1	Power Cord for Skil Model #6355-GWS		

# DRAIN-ROOTER PH SCHEMATIC DIAGRAM



**IMPORTANT: When ordering, give Serial Number of Machine.**