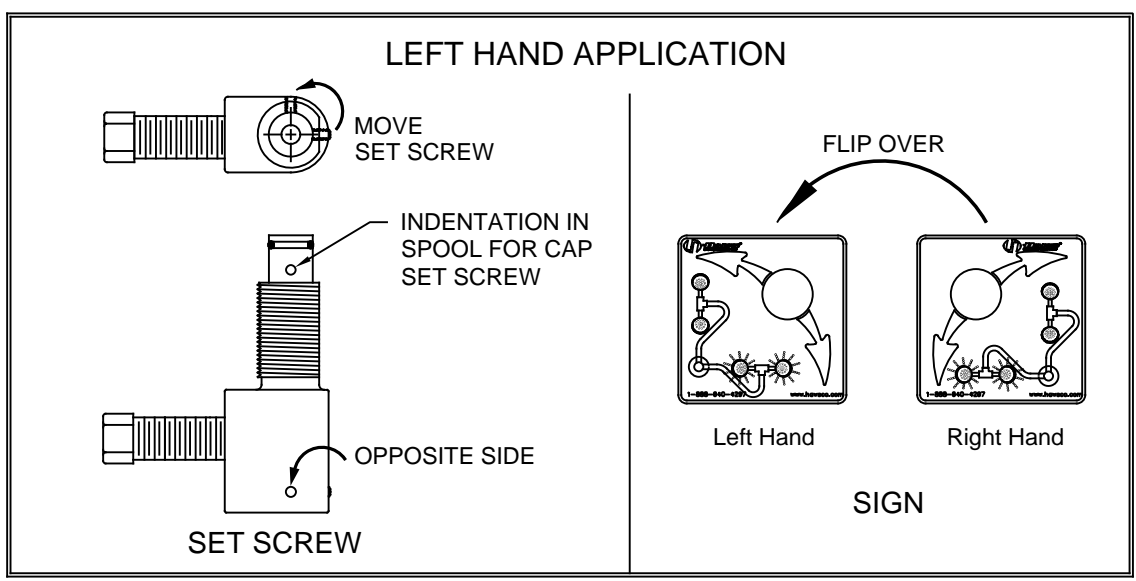
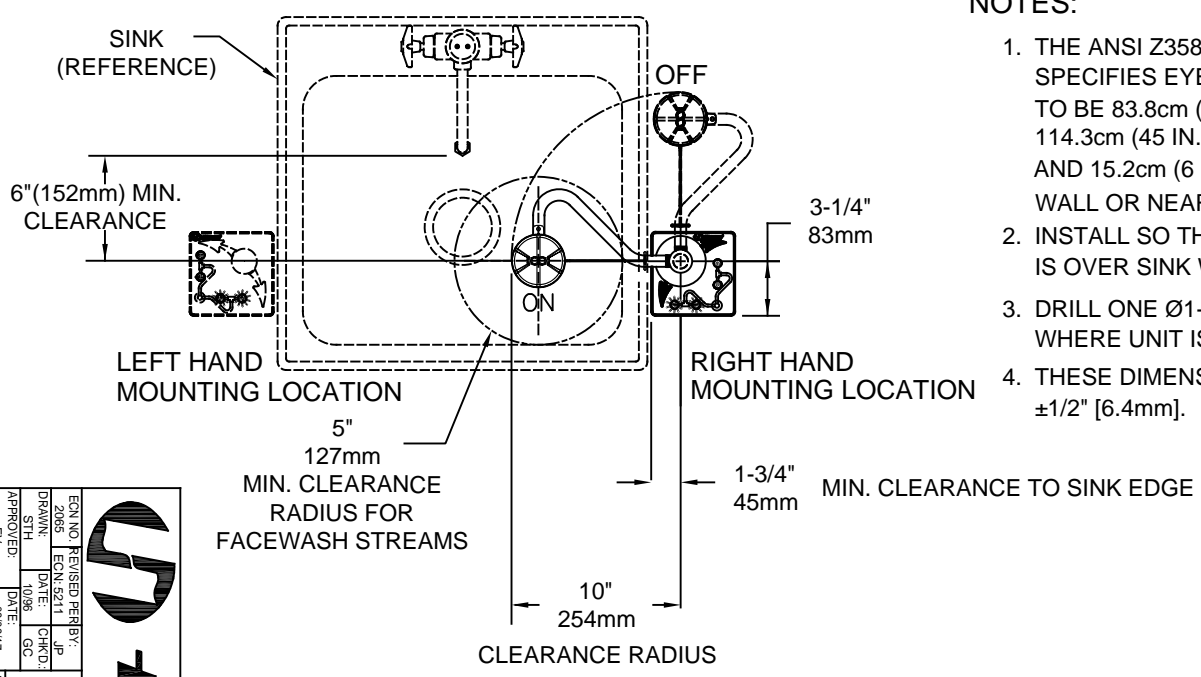


NOTES:

1. THE ANSI Z358.1-2009 STANDARD SPECIFIES EYEWASH NOZZLE HEIGHTS TO BE 83.8cm (33 IN.) TO 114.3cm (45 IN.) ABOVE THE FLOOR AND 15.2cm (6 IN.) MINIMUM FROM WALL OR NEAREST OBSTRUCTION.
2. INSTALL SO THAT EYEWASH HEAD IS OVER SINK WHEN ACTIVATED.
3. DRILL ONE Ø1-3/8" [35mm] HOLE WHERE UNIT IS TO BE INSTALLED.
4. THESE DIMENSIONS MAY VARY ±1/2" [6.4mm].



Haws	
ECN NO. REVISED PER BY: 2065 DRAWN: ECN: 5214 JP STH: DATE: 10/98 APPROVED: DATE: 08/09/17 SCALE: 8:1 DRAWING TYPE: DECK MTD SWING AWAY E/W INSTALLATION: 7611 SHEET: 1 OF 2	MODEL(S) 7611 PART NUMBER: 0002080063.D REVISION: 10 1456 KLEPPE LANE SPARKS, NEVADA, 89431 (775) 359-4712 FAX (775) 359-7424 E-MAIL: HAWS@HAWSCO.COM WEBSITE: WWW.HAWSCO.COM

