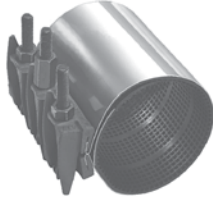


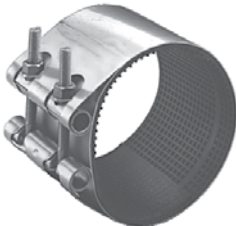
For additional clamp modification options, please refer to page 16.32

Product Groups Available



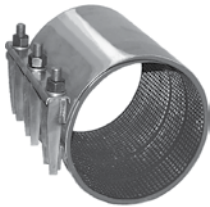
500 & 510 Series Full-Seal® Pipe Repair Clamps

- Ductile Iron Finger Lug
- Single and two section styles
- Service outlet option
- 2"-8" 100 psig; 10"-12" cast iron 60 psig; 10"-12" steel 100 psig



520 & 530 Series Full-Seal® Stainless Steel Pipe Repair Clamps

- 100% Stainless Steel
- Unique Low Profile
- Single and two section styles
- Service outlet option
- 2"-8" 100 psig; 10"-18" cast iron/steel 100 psig (520); 10"-12" cast iron 60 psig (530); 10"-12" steel 100 psig (530)



540 & 550 Series Full-Seal® Stainless Steel Pipe Repair Clamps

- 100% Stainless Steel
- Stainless Steel Finger Lugs
- Single and two section styles
- Service outlet option
- 2"-8" 100 psig; 10"-12" cast iron 60 psig; 10"-12" steel 100 psig



230 Series Full-Seal® Mini-Band™ Clamps

- 360 Seal
- Ductile Iron Lug
- Sizes for 1/2"-4" pipe
- 150 psig



200 Series Pipe-Saver® Pipe Repair Clamps

- Choice of gasket surfaces
- Ductile Iron Lug
- Single and two section styles
- 1/2"-4" 175 psig; 6"-8" 100 psig; 10"-12" 75 psig; 14"-16" 50 psig; 18"-24" 30 psig



Pipe Repair Clamp Accessories

- Tapered screw plugs
- Gasket material

IMPORTANT: MUELLER PIPE REPAIR CLAMPS have demonstrated their capability to seal against gas pressures commonly encountered in distribution systems. Smaller diameter clamps of a given design can seal against higher pressures than larger ones. In addition, the pressure that a clamp can contain is effected by the torque applied to the bolts, the uniformity of the bolt tightening (where there is more than one bolt) as well as the type of extent of pipe damage, surface condition of the pipe, environmental conditions and installation workmanship.

Metallic components of repair clamps, including stainless steel, corrode at widely variable rates depending upon many factors, such as installation outdoors or underground, composition of surrounding atmosphere/soil, presence of stray currents, moisture or chemicals, etc. Consequently, repair clamps must be assumed to have a finite service life. Consult with a corrosion professional to determine the life expectancy of this repair clamp taking into consideration all appropriate factors in the application. The piping system designer should determine the suitability of this type product on your particular system. Unforeseen failure of this product could result if these precautions are not taken. Mueller Co. can provide additional material specification information on request by contacting Customer Service: 800-798-3131.

Rev. 12-06 Shaded area indicates changes

Typical Single Section Full-Seal Clamp



Style Number 500



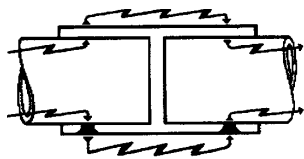
Starter Nut



Standard Bolt & Nut



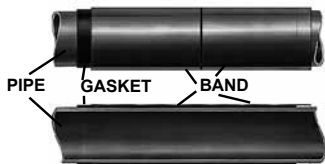
Deep Socket Wrenchs



Bonding Device



Bonding Device



Add-on feature

Mueller 500 Series Single Section Full-Seal Pipe Repair Clamps - for 2" through 12" cast iron and steel pipe

To specify the catalog number, provide the following information :

1. Style number – **500**
2. Length – **standard lengths can be found on the OD chart on the following page**
3. Size number – **refer to the OD chart on the following page after verifying pipe OD**
4. Catalog number prefix for optional features, if desired.

The catalog number for 500 Single Section Full-Seal Repair Clamp, 12" long for 8" cast iron pipe is 500-12-0899.

Extra Bolts and Nuts for 500 series Mueller Single Section Full Seal Repair

Clamp Size	Bolt Size	Bolt Part Number	Nut Part Number
2"-3-1/2"	1/2" x 6"	533942	521010
4"-12"	5/8" x 6" (Standard Bolt)	533937	195236
4"-12"	5/8" x 7" (Starter Bolt)	533938	526655

Stainless Steel Bolts

For optional 304L stainless steel bolts, washers and nuts, add "S-" prefix to clamp catalog number. **Example:** S-500-12-0899.

Deep Socket Wrenchs

Specially designed for use with Mueller Full-Seal Repair Clamps. Long ratchet handle has thumb-tip reverse. Deep sockets (3-1/4") have double hex (12 pt.) and 1/2" square drive.

Part Number	Description
515204	15-3/4" reversible Ratchet Handle
520344	7/8" Socket for 2" and 3" clamps
515207	1-1/16" Socket for 4" and larger clamps

Bonding Device for Cathodic Protection

Metallic conductors are set in the gasket to provide contact between the band and the pipe surface and are available on all 500 series clamps. These conductors permit electrical current flow by establishing positive contact with pipe and band on each side of the pipe crack or break.

To specify optional bonding device for cathodic protection, add a prefix of "2-" to catalog number. **Example:** 2-500-12-0899.

Add-on feature allows long lengthwise repairs

The gasket is cemented into the band in an offset position. This allows overlapping the gasket with the band of another clamp when repairing a longer than usual area of pipe. This feature is not available on Servi-Seal style clamps.

To specify optional add-on feature for longer than usual repairs, add a prefix of "1-" to catalog number. **Example:** 1-500-12-0899.

IMPORTANT: MUELLER PIPE REPAIR CLAMPS have demonstrated their capability to seal against gas pressures commonly encountered in distribution systems. Smaller diameter clamps of a given design can seal against higher pressures than larger ones. In addition, the pressure that a clamp can contain is effected by the torque applied to the bolts, the uniformity of the bolt tightening (where there is more than one bolt) as well as the type of extent of pipe damage, surface condition of the pipe, environmental conditions and installation workmanship.

Metallic components of repair clamps, including stainless steel, corrode at widely variable rates depending upon many factors, such as installation outdoors or underground, composition of surrounding atmosphere/soil, presence of stray currents, moisture or chemicals, etc. Consequently, repair clamps must be assumed to have a finite service life. Consult with a corrosion professional to determine the life expectancy of this repair clamp taking into consideration all appropriate factors in the application. The piping system designer should determine the suitability of this type product on your particular system. Unforeseen failure of this product could result if these precautions are not taken. Mueller Co. can provide additional material specification information on request by contacting Customer Service: 800-798-3131.

MUELLER® 500 SERIES SINGLE SECTION FULL-SEAL® PIPE REPAIR CLAMPS



16.3

Shaded area indicates change Rev. 12-06

**Mueller 500 Series Single Section Full-Seal® Pipe Repair Clamps – for 2" through 12" cast iron and steel pipe.
Standard Lengths: 6", 7-1/2", 9", 10", 12", 15", 18", 20", 24", 30"**

Nominal pipe size	Clamp size number	Clamp O.D. range*				Cast Iron	Steel
		Inches		Millimeters			
		Min.	Max.	Min.	Max.		
2"†	0235	2.35	2.63	59.7	66.8	50-250,A,B,C,D	2"
2-1/2"†	0270	2.70	2.98	68.6	75.7	50-250,A,B,C,D	2-1/2"
3"†	0297	2.97	3.25	75.5	82.5	-	3" O.D.
3"†	0346	3.46	3.72	87.9	94.4	-	3"
3"†	0373	3.73	4.00	94.8	101.6	50-250,A,B,C,D	-
3-1/2"†	0396	3.96	4.25	100.6	107.9	-	3-1/2" (4" O.D.)
4"	0445	4.45	4.87	113.1	123.6	50-250,A	STD
4"	0474	4.74	5.14	120.4	130.5	50-250,A,B,C,D	-
4"	0495	4.95	5.35	125.8	135.8	-	-
4"	0520	5.20	5.60	132.1	142.2	-	-
6"	0566	5.66	5.91	143.7	150.1	-	-
6"	0594	5.94	6.34	150.9	161.0	-	6" O.D.
6"	0634	6.34	6.74	163.3	171.2	-	STD
6"	0655	6.55	6.97	164.4	177.0	50-250,A	STD
6"	0684	6.84	7.24	173.8	183.8	50-250,A,B,C,D	-
6"	0704	7.04	7.44	178.9	188.9	-	-
6"	0722	7.22	7.62	183.4	193.5	-	-
8"	0792	7.92	8.32	201.1	211.3	-	8" O.D.
8"	0836	8.36	8.76	212.3	222.2	-	-
8"	0853	8.53	8.93	216.7	226.8	-	STD
8"	0899	8.99	9.39	228.4	238.5	50-250,A,B,C,D	-
8"	0925	9.25	9.65	235.0	245.1	-	-
8"	0940	9.40	9.80	238.8	248.9	-	-
10"	0990	9.90	10.30	251.4	261.6	-	10" O.D.
10"	1040	10.40	10.80	264.1	274.3	-	-
10"	1064	10.64	11.04	270.3	280.4	-	STD
10"	1104	11.04	11.46	280.5	291.0	50-250,A,B,C,D	-
10"	1137	11.37	11.77	288.8	298.9	-	-
10"	1175	11.75	12.15	298.5	308.6	-	12" O.D.
12"	1200	12.00	12.40	304.8	315.0	-	-
12"	1220	12.20	12.60	309.9	320.0	-	-
12"	1246	12.46	12.86	316.5	326.6	-	-
12"	1260	12.60	13.00	320.1	330.2	-	STD
12"	1314	13.14	13.56	333.8	344.4	50-250,A,B,C,D	-
12"	1356	13.56	13.96	344.5	354.5	-	-
12"	1400	14.00	14.40	355.7	365.7	-	14"

*Verify pipe O.D. before selecting clamp size.

†2"-3-1/2" Standard length is 6", 7-1/2", 9", 10", 12", 15", 18"

Rev. 12-06 Shaded area indicates changes

Typical Single Section Servi-Seal Clamp



Style Number 501-509



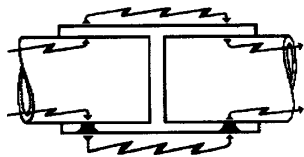
Starter Nut



Standard Bolt & Nut



Deep Socket Wrenches



Bonding Device



Bonding Device

Mueller 501-509 Single Section Servi-Seal Pipe Repair Clamps - with intergral 3/4"-2" IP thread service outlet - for 2" – 12" cast iron and steel pipe

To specify the catalog number, provide the following information :

1. Style number – **see chart below**
2. Length – **standard lengths can be found on the OD chart on the following page**
3. Size number – **refer to the OD chart on the following page after verifying pipe OD**
4. Catalog number prefix for optional features, if desired.

The catalog number for a Single Section Servi-Seal Repair Clamp, 3/4" IP outlet, 12" long for 8" cast iron pipe is 501-12-0899.

Clamp Style Number

Style number	Size and type of outlet tapping thread	O.D. ranges available*
501	3/4" IP	2.35-14.40
503	1" IP	2.35-14.40
505	1-1/4" IP	4.45-14.40
507	1-1/2" IP	4.45-14.40
509	2" IP	4.45-14.40

*Clamps available to fit specific size pipe within the nominal range.

Extra Bolts and Nuts for Mueller Single Section Servi-Seal Repair Clamps

Clamp Size	Bolt Size	Bolt Part Number	Nut Part Number
2"-3-1/2"	1/2" x 6"	533942	521010
4"-12"	5/8" x 6" (Standard Bolt)	533937	195236
4"-12"	5/8" x 7" (Starter Bolt)	533938	526655

Stainless Steel Bolts

For optional 304L stainless steel bolts, washers and nuts, add "S-" prefix to clamp catalog number.

Example: S-501-12-0899.

Deep Socket Wrenches

Specially designed for use with Mueller Full-Seal Repair Clamps. Long ratchet handle has thumb-tip reverse. Deep sockets (3-1/4") have double hex (12 pt.) and 1/2" square drive.

Part Number	Description
515204	15-3/4" reversible Ratchet Handle
520344	7/8" Socket for 2" and 3" clamps
515207	1-1/16" Socket for 4" and larger clamps

Bonding Device For Cathodic Protection

Metallic conductors are set in the gasket to provide contact between the band and the pipe surface and are available on all 500 series clamps. These conductors permit electrical current flow by establishing positive contact with pipe and band on each side of the pipe crack or break.

To specify optional bonding device for cathodic protection, add a prefix of "2-" to catalog number.

Example: 2-501-12-0899.

IMPORTANT: MUELLER PIPE REPAIR CLAMPS have demonstrated their capability to seal against gas pressures commonly encountered in distribution systems. Smaller diameter clamps of a given design can seal against higher pressures than larger ones. In addition, the pressure that a clamp can contain is effected by the torque applied to the bolts, the uniformity of the bolt tightening (where there is more than one bolt) as well as the type of extent of pipe damage, surface condition of the pipe, environmental conditions and installation workmanship.

Metallic components of repair clamps, including stainless steel, corrode at widely variable rates depending upon many factors, such as installation outdoors or underground, composition of surrounding atmosphere/soil, presence of stray currents, moisture or chemicals, etc. Consequently, repair clamps must be assumed to have a finite service life. Consult with a corrosion professional to determine the life expectancy of this repair clamp taking into consideration all appropriate factors in the application. The piping system designer should determine the suitability of this type product on your particular system. Unforeseen failure of this product could result if these precautions are not taken. Mueller Co. can provide additional material specification information on request by contacting Customer Service: 800-798-3131.

MUELLER® 500 SERIES SINGLE SECTION SERVI-SEAL® PIPE REPAIR CLAMPS



16.5

Shaded area indicates change Rev. 12-06

**Mueller 501–509 Single Section Servi-Seal Pipe Repair Clamps – for 2" through 12" cast iron and steel pipe.
Standard Lengths: 6", 7-1/2", 9", 10", 12", 15", 18", 20", 24", 30"**

Nominal Pipe Size	Clamp Size Number	Clamp O.D. Range*				Cast Iron	Steel
		Inches		Millimeters			
		Min.	Max.	Min.	Max.		
2"†	0235	2.35	2.63	59.7	66.8	50-250,A,B,C,D	2"
2-1/2"†	0270	2.70	2.98	68.6	75.7	50-250,A,B,C,D	2-1/2"
3"†	0297	2.97	3.25	75.5	82.5	-	3" O.D.
3"†	0346	3.46	3.72	87.9	94.4	-	3"
3"†	0373	3.73	4.00	94.8	101.6	50-250,A,B,C,D	-
3-1/2"†	0396	3.96	4.25	100.6	107.9	-	3-1/2" (4" O.D.)
4"	0445	4.45	4.87	113.1	123.6	50-250,A	STD
4"	0474	4.74	5.14	120.4	130.5	50-250,A,B,C,D	-
4"	0495	4.95	5.35	125.8	135.8	-	-
4"	0520	5.20	5.60	132.1	142.2	-	-
6"	0566	5.66	5.91	143.7	150.1	-	-
6"	0594	5.94	6.34	150.9	161.0	-	6" O.D.
6"	0634	6.34	6.74	163.3	171.2	-	STD
6"	0655	6.55	6.97	164.4	177.0	50-250,A	STD
6"	0684	6.84	7.24	173.8	183.8	50-250,A,B,C,D	-
6"	0704	7.04	7.44	178.9	188.9	-	-
6"	0722	7.22	7.62	183.4	193.5	-	-
8"	0792	7.92	8.32	201.1	211.3	-	8" O.D.
8"	0836	8.36	8.76	212.3	222.2	-	-
8"	0853	8.53	8.93	216.7	226.8	-	STD
8"	0899	8.99	9.39	228.4	238.5	50-250,A,B,C,D	-
8"	0925	9.25	9.65	235.0	245.1	-	-
8"	0940	9.40	9.80	238.8	248.9	-	-
10"	0990	9.90	10.30	251.4	261.6	-	10" O.D.
10"	1040	10.40	10.80	264.1	274.3	-	-
10"	1064	10.64	11.04	270.3	280.4	-	STD
10"	1104	11.04	11.46	280.5	291.0	50-250,A,B,C,D	-
10"	1137	11.37	11.77	288.8	298.9	-	-
10"	1175	11.75	12.15	298.5	308.6	-	12" O.D.
12"	1200	12.00	12.40	304.8	315.0	-	-
12"	1220	12.20	12.60	309.9	320.0	-	-
12"	1246	12.46	12.86	316.5	326.6	-	-
12"	1260	12.60	13.00	320.1	330.2	-	STD
12"	1314	13.14	13.56	333.8	344.4	50-250,A,B,C,D	-
12"	1356	13.56	13.96	344.5	354.5	-	-
12"	1400	14.00	14.40	355.7	365.7	-	14"

*Verify pipe O.D. before selecting clamp size.
†2"-3-1/2" Standard length is 6", 7-1/2", 9", 10", 12", 15", 18"

Rev. 12-06 Shaded area indicates changes

Typical XTRA-RANGE Full-Seal Clamp



Style Number 510



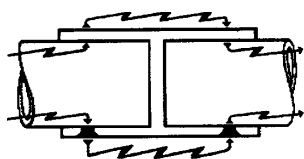
Starter Nut



Standard Bolt & Nut



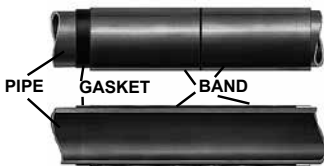
Deep Socket Wrenches



Bonding Device



Bonding Device



Add-on feature

Mueller 510 Series Xtra-Range Full-Seal Pipe Repair Clamps - for 4" through 36" cast iron and steel pipe

To specify the catalog number, provide the following information :

1. Style number – **510**
2. Length – **standard lengths can be found on the OD chart on the following page**
3. Size number – **refer to the OD chart on the following page after verifying pipe OD**
4. Catalog number prefix for optional features, if desired.

The catalog number for a 510 Xtra-Range Full-Seal Repair Clamp, 12" long for 6" cast iron pipe is 510-12-0675.

Extra Bolts and Nuts for Mueller Xtra-range Full Seal Repair Clamps

Clamp Size	Bolt Size	Bolt Part Number	Nut Part Number
4"-36"	5/8" x 6" (Standard Bolt)	533937	195236
4"-36"	5/8" x 7" (Starter Bolt)	533938	526655

Stainless Steel Bolts

For optional 304L stainless steel bolts, washers and nuts, add "S-" prefix to clamp catalog number.

Example: S-510-12-0675.

Deep Socket Wrenches

Specially designed for use with Mueller Full-Seal Repair Clamps. Long ratchet handle has thumb-tip reverse. Deep sockets (3-1/4") have double hex (12 pt.) and 1/2" square drive.

Part Number	Description
515207	1-1/16" Socket
515204	15-3/4" with 1/2" drive reversible Ratchet Handle

Bonding device for cathodic protection

Metallic conductors are set in the gasket to provide contact between the band and the pipe surface and are available on all 500 series clamps. These conductors permit electrical current flow by establishing positive contact with pipe and band on each side of the pipe crack or break.

To specify optional bonding device for cathodic protection, add a prefix of "2-" to catalog number.

Example: 2-510-12-0675

Add-on feature allows long lengthwise repairs

The gasket is cemented into the band in an offset position. This allows overlapping the gasket with the band of another clamp when repairing a longer than usual area of pipe. This feature is not available on Servi-Seal style clamps.

To specify optional add-on feature for longer than usual repairs, add a prefix of "1-" to catalog number.

Example: 1-510-12-0675

IMPORTANT: MUELLER PIPE REPAIR CLAMPS have demonstrated their capability to seal against gas pressures commonly encountered in distribution systems. Smaller diameter clamps of a given design can seal against higher pressures than larger ones. In addition, the pressure that a clamp can contain is effected by the torque applied to the bolts, the uniformity of the bolt tightening (where there is more than one bolt) as well as the type of extent of pipe damage, surface condition of the pipe, environmental conditions and installation workmanship.

Metallic components of repair clamps, including stainless steel, corrode at widely variable rates depending upon many factors, such as installation outdoors or underground, composition of surrounding atmosphere/soil, presence of stray currents, moisture or chemicals, etc. Consequently, repair clamps must be assumed to have a finite service life. Consult with a corrosion professional to determine the life expectancy of this repair clamp taking into consideration all appropriate factors in the application. The piping system designer should determine the suitability of this type product on your particular system. Unforeseen failure of this product could result if these precautions are not taken. Mueller Co. can provide additional material specification information on request by contacting Customer Service: 800-798-3131.

**MUELLER® 510 SERIES XTRA-RANGE®
FULL-SEAL® PIPE REPAIR CLAMPS**



16.7

Shaded area indicates change Rev. 12-06

**Mueller 510 Series Xtra-Range Full-Seal Pipe Repair Clamps – for 4" through 36" cast iron and steel pipe.
Standard Lengths: 6", 7-1/2", 9", 10", 12", 15", 18", 20", 24", 30"**

Nominal Pipe Size	Clamp Size Number	Clamp O.D. Range*				Cast Iron	Steel
		Inches		Millimeters			
		Min.	Max.	Min.	Max.		
4"	0470	4.70	5.50	119.4	139.7	50-250,A,B,C,D	-
6"	0662	6.62	7.42	168.1	188.5	-	STD
6"	0675	6.75	7.55	171.5	191.7	50-250,A,B,C,D	-
8"	0862	8.62	9.42	218.9	239.3	-	STD
8"	0888	8.88	9.68	225.6	245.8	50-250,A,B,C,D	-
10"	1072	10.72	11.72	272.3	297.7	-	STD
10"	1105	11.05	12.05	280.7	306.0	50-250,A,B,C,D	12" O.D.
12"	1246	12.46	13.26	316.5	336.8	-	STD
12"	1310	13.10	14.30	332.8	363.2	50-250,A,B,C,D	14"
14"	1433	14.33	15.13	364.0	384.3	-	-
14"	1510	15.10	15.90	383.6	403.8	50-250,A,B,C,D	-
16"	1590	15.90	16.70	403.9	424.1	-	16"
16"	1655	16.55	17.35	420.4	440.6	-	-
16"	1720	17.20	18.00	436.9	457.2	50-250,A,B,C,D	-
18"	1760	17.60	18.40	447.1	467.3	-	18"
18"	1841	18.41	19.21	467.7	487.9	-	-
18"	1922	19.22	20.02	488.2	508.5	50-250,A,B,C,D	-
20"	1990	19.90	20.70	505.5	525.7	-	20"
20"	2070	20.70	21.50	525.8	546.1	-	-
20"	2145	21.45	22.25	544.9	565.1	50-250,A,B,C,D	22"
20"	2220	22.20	23.00	563.9	584.2	-	-
20"	2280	22.80	23.60	579.2	599.4	-	-
24"	2344	23.44	24.24	595.4	615.6	-	24"
24"	2420	24.20	25.00	614.7	635.0	-	-
24"	2490	24.90	25.70	632.5	652.7	-	-
24"	2566	25.66	26.46	651.8	672.0	50-250,A,B,C,D	26"
24"	2672	26.72	27.52	678.7	699.0	-	-
24"	2772	27.72	28.52	704.1	724.4	-	28"
24"	2863	28.63	29.83	727.3	757.6	-	-
24"	2957	29.57	30.77	751.1	781.5	-	30"
30"	3122	31.22	32.42	793.0	823.5	-	-
36"	3786	37.86	39.16	961.6	994.7	-	-

*Verify pipe O.D. before selecting clamp size.

Rev. 12-06 Shaded area indicates changes

Typical Mueller Xtra-Range Servi-Seal Clamps



Style Number 511-519



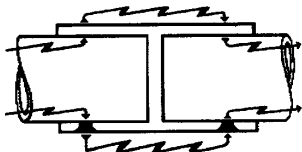
Starter Nut



Standard Bolt & Nut



Deep Socket Wrenches



Bonding Device



Bonding Device

Mueller 511 - 519 Xtra-Range Servi-Seal Pipe Repair Clamps - with integral 3/4" through 2" IP threaded service outlet - for 4" through 36" cast iron and steel pipe

To specify the catalog number, provide the following information :

1. Style number – see chart below
2. Length – standard lengths can be found on the OD chart on the following page
3. Size number – refer to the OD chart on the following page after verifying pipe OD
4. Catalog number prefix for optional features, if desired

The catalog number for a Xtra-Range Servi-Seal Repair Clamp, with 3/4" IP thread tapped outlet, 12" clamp length for 6" cast iron pipe is 511-12-0675.

Clamp Style Number

Style Number	Size and Type of Outlet Tapping Thread	O.D. Ranges Available*
511	3/4" IP	4.70-39.16
513	1" IP	4.70-39.16
515	1-1/4" IP	4.70-39.16
517	1-1/2" IP	4.70-39.16
519	2" IP	4.70-39.16

* Clamps available to fit specific size pipe within this nominal range.

Extra Bolts and Nuts for Mueller Xtra-Range Full Seal Repair Clamps

Clamp Size	Bolt Size	Bolt part number	Nut part number
4"-36"	5/8" x 6" (Standard Bolt)	533937	195236
4"-36"	5/8" x 7" (Starter Bolt)	533938	526655

Stainless Steel Bolts

For optional 304L stainless steel bolts, washers and nuts, add "S-" prefix to clamp catalog number.

Example: S-511-12-0675

Deep Socket Wrenches

Specially designed for use with Mueller Full- Seal Repair Clamps. Long ratchet handle has thumb-tip reverse. Deep sockets (3-1/4") have double hex (12 pt.) and 1/2" square drive.

Part Number	Description
515207	1-1/16" Socket
515204	15-3/4" with 1/2" reversible Ratchet Handle

Bonding Device for Cathodic Protection

Metallic conductors are set in the gasket to provide contact between the band and the pipe surface and are available on all 500 series clamps. These conductors permit electrical current flow by establishing positive contact with pipe and band on each side of the pipe crack or break.

To specify optional bonding device for cathodic protection, add a prefix of "2-" to catalog number.

Example: 2-511-12-0675

IMPORTANT: MUELLER PIPE REPAIR CLAMPS have demonstrated their capability to seal against gas pressures commonly encountered in distribution systems. Smaller diameter clamps of a given design can seal against higher pressures than larger ones. In addition, the pressure that a clamp can contain is effected by the torque applied to the bolts, the uniformity of the bolt tightening (where there is more than one bolt) as well as the type of extent of pipe damage, surface condition of the pipe, environmental conditions and installation workmanship.

Metallic components of repair clamps, including stainless steel, corrode at widely variable rates depending upon many factors, such as installation outdoors or underground, composition of surrounding atmosphere/soil, presence of stray currents, moisture or chemicals, etc. Consequently, repair clamps must be assumed to have a finite service life. Consult with a corrosion professional to determine the life expectancy of this repair clamp taking into consideration all appropriate factors in the application. The piping system designer should determine the suitability of this type product on your particular system. Unforeseen failure of this product could result if these precautions are not taken. Mueller Co. can provide additional material specification information on request by contacting Customer Service: 800-798-3131.

**Mueller 511-519 Xtra-Range Servi-Seal Pipe Repair Clamps – for 4" through 36" cast iron and steel pipe.
Standard Lengths: 6", 7-1/2", 9", 10", 12", 15", 18", 20", 24", 30"**

Nominal Pipe Size	Clamp Size Number	Clamp O.D. Range*				Cast Iron	Steel
		Inches		Millimeters			
		Min.	Max.	Min.	Max.		
4"	0470	4.70	5.50	119.4	139.7	50-250,A,B,C,D	-
6"	0662	6.62	7.42	168.1	188.5	-	STD
6"	0675	6.75	7.55	171.5	191.7	50-250,A,B,C,D	-
8"	0862	8.62	9.42	218.9	239.3	-	STD
8"	0888	8.88	9.68	225.6	245.8	50-250,A,B,C,D	-
10"	1072	10.72	11.72	272.3	297.7	-	STD
10"	1105	11.05	12.05	280.7	306.0	50-250,A,B,C,D	12" O.D.
12"	1246	12.46	13.26	316.5	336.8	-	STD
12"	1310	13.10	14.30	332.8	363.2	50-250,A,B,C,D	14"
14"	1433	14.33	15.13	364.0	384.3	-	-
14"	1510	15.10	15.90	383.6	403.8	50-250,A,B,C,D	-
16"	1590	15.90	16.70	403.9	424.1	-	16"
16"	1655	16.55	17.35	420.4	440.6	-	-
16"	1720	17.20	18.00	436.9	457.2	50-250,A,B,C,D	-
18"	1760	17.60	18.40	447.1	467.3	-	18"
18"	1841	18.41	19.21	467.7	487.9	-	-
18"	1922	19.22	20.02	488.2	508.5	50-250,A,B,C,D	-
20"	1990	19.90	20.70	505.5	525.7	-	20"
20"	2070	20.70	21.50	525.8	546.1	-	-
20"	2145	21.45	22.25	544.9	565.1	50-250,A,B,C,D	22"
20"	2220	22.20	23.00	563.9	584.2	-	-
20"	2280	22.80	23.60	579.2	599.4	-	-
24"	2344	23.44	24.24	595.4	615.6	-	24"
24"	2420	24.20	25.00	614.7	635.0	-	-
24"	2490	24.90	25.70	632.5	652.7	-	-
24"	2566	25.66	26.46	651.8	672.0	50-250,A,B,C,D	26"
24"	2672	26.72	27.52	678.7	699.0	-	-
24"	2772	27.72	28.52	704.1	724.4	-	28"
24"	2863	28.63	29.83	727.3	757.6	-	-
24"	2957	29.57	30.77	751.1	781.5	-	30"
30"	3122	31.22	32.42	793.0	823.5	-	-
36"	3786	37.86	39.16	961.6	994.7	-	-

*Verify pipe O.D. before selecting clamp size.

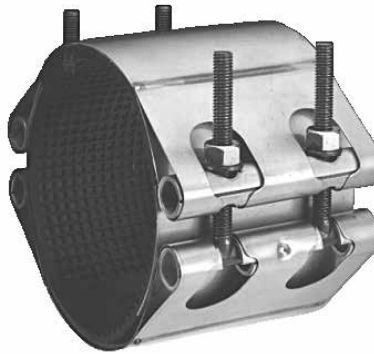
Mueller "all stainless steel" Full-Seal Pipe Repair Clamps provide an economical repair for circumferential breaks or cracks, multiple leaks or holes in pipe. They are available in standard lengths for cast iron and steel pipe, and with "add-on" etc. Each clamp size can accommodate a wide range of O.D. variations.

Lightweight all stainless steel clamps resist corrosive atmospheres and hot soils. Available in single-section Full-Seal® style (Series 520), in two-section Xtra-Range® style (Series 530), and in Servi-Seal® style with welded-in service outlet. Servi-Seal style is available in either single-section (Styles 521-529) or two-section (Styles 531- 539).

Mueller 520 and 530 series Full-Seal Pipe Repair Clamps features:



520 SERIES CLAMP



530 Series Clamp Xtra-Range



SERVI-SEAL Clamp

- **Maximum Gas Working Pressure** – for properly installed clamps at 150F. maximum working temperature: 2"-8" 100 psig (689 kPa), 10"-12" cast iron pipe 60 psig, 10"-12" steel pipe 100 psig (689 kPa).
- **304L Stainless Steel "Gap Bridges"** – molded into gasket where the band sections join and add support to provide 360° clamping pressure.
- **Tapered-End Gridded Gasket** – made of specially compounded nitrile rubber has gridded pattern for positive sealing and tapered ends to make installation quick and easy.
- **Bands** – made of type 304L stainless steel, and are machine-welded and fully passivated.
- **Unique Low-Profile Design** – of the bolting mechanism makes clamp easy to handle and easy to fit around pipe.
- **High Strength Stainless Steel Bolts** – have spin-fit threads, treated with an anti-galling agent for fast installation – plus special T-heads so they drop into bolt bar slots easily yet do not turn during tightening.
- **Stainless Steel Bolting Mechanism** – is pre-assembled. Unique weight-saving Mueller design features lug and bolt bars which rotate as the clamp is tightened. This avoids bolt bending or binding, keeps tightening force close to the pipe surface and allows more efficient transfer of tightening force on the bolts to clamping force on the pipe.

IMPORTANT: MUELLER PIPE REPAIR CLAMPS have demonstrated their capability to seal against gas pressures commonly encountered in distribution systems. Smaller diameter clamps of a given design can seal against higher pressures than larger ones. In addition, the pressure that a clamp can contain is effected by the torque applied to the bolts, the uniformity of the bolt tightening (where there is more than one bolt) as well as the type of extent of pipe damage, surface condition of the pipe, environmental conditions and installation workmanship.

Metallic components of repair clamps, including stainless steel, corrode at widely variable rates depending upon many factors, such as installation outdoors or underground, composition of surrounding atmosphere/soil, presence of stray currents, moisture or chemicals, etc. Consequently, repair clamps must be assumed to have a finite service life. Consult with a corrosion professional to determine the life expectancy of this repair clamp taking into consideration all appropriate factors in the application. The piping system designer should determine the suitability of this type product on your particular system. Unforeseen failure of this product could result if these precautions are not taken. Mueller Co. can provide additional material specification information on request by contacting Customer Service: 800-798-3131.

Typical Stainless Steel Series 520 Clamp



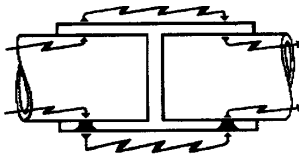
Style Number 520



Standard Bolt/nut



Deep Socket Wrenches



Bonding Device



Bonding Device



Add-on Feature

Mueller 520 Series Single Section Full-Seal Stainless Steel Pipe Repair Clamps - for 2" through 12" cast iron and steel pipe.

To specify the catalog number, provide the following information :

1. Style number – 520
2. Length – standard lengths can be found on the OD chart on the following page
3. Size number – refer to the OD chart on the following page after verifying pipe OD
4. Catalog number prefix or suffix for optional features, if desired.

The catalog number for a 520 Single Section Full-Seal Repair Clamp, 12" long for 8" cast iron pipe is 520-12-0899.

Optional Extended Starting Bolts and Extra bolts and Nuts for Mueller Single Section Full Seal Stainless Repair Clamps

Clamps can be ordered with a longer bolt and longer nut in one bolt position to facilitate clamp installation.

To specify optional extended bolt/nut, add a suffix "X" to end of catalog number.

Example: 530-12-0684X

Clamp Size	Bolt Size	Bolt Part No.	Nut Part No.	Washer Part No.
2"-12" (Standard Bolt & Nut)	1/2" x 4-1/2"	522997	522998	522999

Deep Socket Wrenches

Specially designed for use with Mueller Full-Seal Repair Clamps. Long ratchet handle has thumb-tip reverse. Deep sockets (3-1/4") have double hex (12 pt.) and 1/2" square drive.

Part Number	Description
515204	15-3/4" reversible Ratchet Handle
520344	7/8" Socket for 2" and 3" clamps

Bonding Device for Cathodic Protection

Metallic conductors are set in the gasket to provide contact between the band and the pipe surface and are available on all 500 series clamps. These conductors permit electrical current flow by establishing positive contact with pipe and band on each side of the pipe crack or break.

To specify optional bonding device for cathodic protection, add a prefix of "2-" to catalog number.

Example: 2-520-12-0899.

Add-on Feature Allows Long Lengthwise Repairs

The gasket is cemented into the band in an offset position. This allows overlapping the gasket with the band of another clamp when repairing a longer than usual area of pipe. This feature is not available on Servi-Seal style clamps.

To specify optional add-on feature for longer than usual repairs, add a prefix of "1-" to catalog number.

Example: 1-520-12-0899.

IMPORTANT: MUELLER PIPE REPAIR CLAMPS have demonstrated their capability to seal against gas pressures commonly encountered in distribution systems. Smaller diameter clamps of a given design can seal against higher pressures than larger ones. In addition, the pressure that a clamp can contain is effected by the torque applied to the bolts, the uniformity of the bolt tightening (where there is more than one bolt) as well as the type of extent of pipe damage, surface condition of the pipe, environmental conditions and installation workmanship.

Metallic components of repair clamps, including stainless steel, corrode at widely variable rates depending upon many factors, such as installation outdoors or underground, composition of surrounding atmosphere/soil, presence of stray currents, moisture or chemicals, etc. Consequently, repair clamps must be assumed to have a finite service life. Consult with a corrosion professional to determine the life expectancy of this repair clamp taking into consideration all appropriate factors in the application. The piping system designer should determine the suitability of this type product on your particular system. Unforeseen failure of this product could result if these precautions are not taken. Mueller Co. can provide additional material specification information on request by contacting Customer Service: 800-798-3131.

Rev. 12-06 Shaded area indicates changes

Mueller 520 Series Single Section Full-Seal® Stainless Steel Pipe Repair Clamps — for 2" through 12" cast iron and steel pipe. Standard Lengths: 6", 7-1/2", 9", 10", 12", 15", 18", 20"

Nominal Pipe Size	Clamp Size Number	Clamp O.D. Range*				Cast Iron	Steel
		Inches		Millimeters			
		Min.	Max.	Min.	Max.		
2"†	0235	2.35	2.63	59.7	66.8	50-250,A,B,C,D	2"
2-1/2"†	0243	2.43	2.58	61.7	65.5		
2-1/2"†	0270	2.70	2.98	68.6	75.7	50-250,A,B,C,D	2-1/2"
3"†	0297	2.97	3.25	75.5	82.5	-	3" O.D.
3"†	0346	3.46	3.72	87.9	94.4	-	3"
3"†	0373	3.73	4.00	94.8	101.6	50-250,A,B,C,D	-
3-1/2"†	0396	3.96	4.25	100.6	107.9	-	3-1/2" (4" O.D.)
4"	0445	4.45	4.87	113.1	123.6	50-250,A	STD
4"	0474	4.74	5.14	120.4	130.5	50-250,A,B,C,D	-
4"	0495	4.95	5.35	125.8	135.8	-	-
4"	0520	5.20	5.60	132.1	142.2	-	-
6"	0594	5.94	6.34	150.9	161.0	-	6" O.D.
6"	0655	6.55	6.97	164.4	177.0	50-250,A	STD
6"	0684	6.84	7.24	173.8	183.8	50-250,A,B,C,D	-
6"	0704	7.04	7.44	178.9	188.9	-	-
6"	0722	7.22	7.62	183.4	193.5	-	-
8"	0853	8.53	8.93	216.7	226.8	-	STD
8"	0899	8.99	9.39	228.4	238.5	50-250,A,B,C,D	-
8"	0925	9.25	9.65	235.0	245.1	-	-
8"	0940	9.40	9.80	238.8	248.9	-	-
10"	0990	9.90	10.30	251.4	261.6	-	10" O.D.
10"	1064	10.64	11.04	270.3	280.4	-	STD
10"	1104	11.04	11.46	280.5	291.0	50-250,A,B,C,D	-
10"	1137	11.37	11.77	288.8	298.9	-	-
10"	1175	11.75	12.15	298.5	308.6	-	12" O.D.
12"	1260	12.60	13.00	320.1	330.2	-	STD
12"	1314	13.14	13.56	333.8	344.4	50-250,A,B,C,D	-
12"	1356	13.56	13.96	344.5	354.5	-	-
12"	1400	14.00	14.40	355.7	365.7	-	14"

*Verify pipe O.D. before selecting clamp size.

†2"-3-1/2" Standard length is 6", 7-1/2", 9", 10", 12", 15", 18"

Typical Single Section
 Servi-Seal Stainless
 Steel Clamps



Mueller 521 - 529 Single Section Servi-Seal Stainless Steel Pipe Repair Clamps - with integral 3/4" though 2" IP threaded service outlet-for 2" through 12" cast iron and steel pipe

To specify the catalog number, provide the following information :

1. Style number – see chart below
2. Length – standard lengths can be found on the OD chart on the following page
3. Size number – refer to the OD chart on the following page after verifying pipe OD
4. Catalog number prefix for optional features, if desired

The catalog number for a Single Section Servi-Seal Repair Clamp with 3/4" IP outlet, 12" clamp length for 8" cast iron pipe is 521-12-0899.

Style Number 521-529



Standard Bolt/nut

Clamp Style number

Style Number	Size and Type of Outlet Tapping Thread	O.D. Ranges Available*
521	3/4" IP	2.35-14.40
523	1" IP	2.35-14.40
525	1-1/4" IP	4.45-14.40
527	1-1/2" IP	4.45-14.40
529	2" IP	4.45-14.40

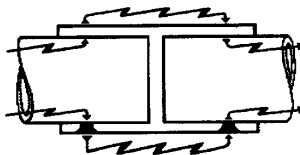
*Clamps available to fit specific size pipe within this nominal size range.



Deep Socket Wrenches

Extra Bolts, Nuts and Washers for Mueller Single Section Servi-Seal Stainless Steel Repair Clamps

Clamp Size	Bolt Size	Bolt Part No.	Nut Part No.	Washer Part No.
2"-12" (Standard Bolt & Nut)	1/2" x 4-1/2"	522997	522998	522999



Bonding Device

Deep Socket Wrenches

Specially designed for use with Mueller Full- Seal Repair Clamps. Long ratchet handle has thumb-tip reverse. Deep sockets (3-1/4") have double hex (12 pt.) and 1/2" square drive.

Part Number	Description
515204	15-3/4" with 1/2" reversible Ratchet Handle
520344	7/8" Socket for 2" and 3" clamps



Bonding Device

Bonding Device for Cathodic Protection

Metallic conductors are set in the gasket to provide contact between the band and the pipe surface and are available on all 500 series clamps. These conductors permit electrical current flow by establishing positive contact with pipe and band on each side of the pipe crack or break.

To specify optional bonding device for cathodic protection, add a prefix of "2-" to catalog number.

Example: 2-521-12-0899

IMPORTANT: MUELLER PIPE REPAIR CLAMPS have demonstrated their capability to seal against gas pressures commonly encountered in distribution systems. Smaller diameter clamps of a given design can seal against higher pressures than larger ones. In addition, the pressure that a clamp can contain is effected by the torque applied to the bolts, the uniformity of the bolt tightening (where there is more than one bolt) as well as the type of extent of pipe damage, surface condition of the pipe, environmental conditions and installation workmanship.

Metallic components of repair clamps, including stainless steel, corrode at widely variable rates depending upon many factors, such as installation outdoors or underground, composition of surrounding atmosphere/soil, presence of stray currents, moisture or chemicals, etc. Consequently, repair clamps must be assumed to have a finite service life. Consult with a corrosion professional to determine the life expectancy of this repair clamp taking into consideration all appropriate factors in the application. The piping system designer should determine the suitability of this type product on your particular system. Unforeseen failure of this product could result if these precautions are not taken. Mueller Co. can provide additional material specification information on request by contacting Customer Service: 800-798-3131.

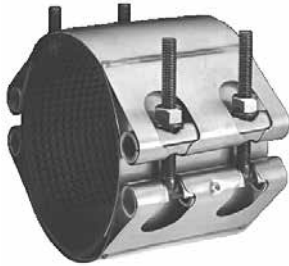
Mueller 521-529 Single Section Stainless Full-Seal® Pipe Repair Clamps – for 2" through 12" cast iron and steel pipe.
Standard Lengths: 6", 7-1/2", 9", 10", 12", 15", 18", 20"

Nominal Pipe Size	Clamp Size Number	Clamp O.D. Range*				Cast Iron	Steel
		Inches		Millimeters			
		Min.	Max.	Min.	Max.		
2"†	0235	2.35	2.63	59.7	66.8	50-250,A,B,C,D	2"
2-1/2"†	0243	2.43	2.58	61.7	65.5		
2-1/2"†	0270	2.70	2.98	68.6	75.7	50-250,A,B,C,D	2-1/2"
3"†	0297	2.97	3.25	75.5	82.5	-	3" O.D.
3"†	0346	3.46	3.72	87.9	94.4	-	3"
3"†	0373	3.73	4.00	94.8	101.6	50-250,A,B,C,D	-
3-1/2"†	0396	3.96	4.25	100.6	107.9	-	3-1/2" (4" O.D.)
4"	0445	4.45	4.87	113.1	123.6	50-250,A	STD
4"	0474	4.74	5.14	120.4	130.5	50-250,A,B,C,D	-
4"	0495	4.95	5.35	125.8	135.8	-	-
4"	0520	5.20	5.60	132.1	142.2	-	-
6"	0594	5.94	6.34	150.9	161.0	-	6" O.D.
6"	0655	6.55	6.97	164.4	177.0	50-250,A	STD
6"	0684	6.84	7.24	173.8	183.8	50-250,A,B,C,D	-
6"	0704	7.04	7.44	178.9	188.9	-	-
6"	0722	7.22	7.62	183.4	193.5	-	-
8"	0853	8.53	8.93	216.7	226.8	-	STD
8"	0899	8.99	9.39	228.4	238.5	50-250,A,B,C,D	-
8"	0925	9.25	9.65	235.0	245.1	-	-
8"	0940	9.40	9.80	238.8	248.9	-	-
10"	0990	9.90	10.30	251.4	261.6	-	10" O.D.
10"	1064	10.64	11.04	270.3	280.4	-	STD
10"	1104	11.04	11.46	280.5	291.0	50-250,A,B,C,D	-
10"	1137	11.37	11.77	288.8	298.9	-	-
10"	1175	11.75	12.15	298.5	308.6	-	12" O.D.
12"	1260	12.60	13.00	320.1	330.2	-	STD
12"	1314	13.14	13.56	333.8	344.4	50-250,A,B,C,D	-
12"	1356	13.56	13.96	344.5	354.5	-	-
12"	1400	14.00	14.40	355.7	365.7	-	14"

*Verify pipe O.D. before selecting clamp size.

†2"-3-1/2" Standard length is 6", 7-1/2", 9", 10", 12", 15", 18"

Typical Xtra-Range Full-Seal Stainless Steel Clamps



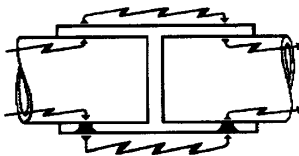
Style Number 530



Standard Bolt/nut



Deep Socket Wrenches



Bonding Device



Bonding Device



Add-on Feature

Mueller 530 Series Xtra-Range Full-Seal Stainless Steel Pipe Repair Clamps - for 4" through 12" cast iron, ductile iron and steel pipe.

To specify the catalog number, provide the following information :

1. Style number – **530**
2. Length – **standard lengths can be found on the OD chart on the following page**
3. Size number – **refer to the OD chart on the following page after verifying pipe OD**
4. Catalog number prefix or suffix for optional features, if desired.

The catalog number for a 530 Xtra-Range Full-Seal Repair Clamp, 12" long for 6" cast iron pipe is 530-12-0684.

Optional Extended Starting Bolts and Extra Bolts and Nuts for Mueller Xtra-Range Full Seal Stainless Repair Clamps

Clamps can be ordered with a longer bolt and longer nut in one bolt position to facilitate clamp installation.

To specify optional extended bolt/nut, add a suffix "X" to end of catalog number.

Example: 530-12-0684X

Clamp Size	Bolt Size	Bolt Part No.	Nut Part No.	Washer Part No.
2"-12" (Standard Bolt & Nut)	1/2" x 4-1/2"	522997	522998	522999

Deep Socket Wrenches

Specially designed for use with Mueller Full-Seal Repair Clamps. Long ratchet handle has thumb-tip reverse. Deep sockets (3-1/4") have double hex (12 pt.) and 1/2" square drive.

Part Number	Description
515204	15-3/4" with 1/2" reversible Ratchet Handle
520344	7/8" Socket for 4" and larger clamps

Bonding Device for Cathodic Protection

Metallic conductors are set in the gasket to provide contact between the band and the pipe surface and are available on all 500 series clamps. These conductors permit electrical current flow by establishing positive contact with pipe and band on each side of the pipe crack or break.

To specify optional bonding device for cathodic protection, add a prefix of "2-" to catalog number.

Example: 2-530-12-0684

Add-on Feature Allows Long Lengthwise Repairs

The gasket is cemented into the band in a 1" offset position. This allows overlapping the gasket with the band of another offset clamp when repairing a longer than usual area of pipe. This feature is not available on Servi-Seal style clamps.

To specify optional add-on feature for longer than usual repairs, add a prefix of "1-" to catalog number.

Example: 1-530-12-0684.

IMPORTANT: MUELLER PIPE REPAIR CLAMPS have demonstrated their capability to seal against gas pressures commonly encountered in distribution systems. Smaller diameter clamps of a given design can seal against higher pressures than larger ones. In addition, the pressure that a clamp can contain is effected by the torque applied to the bolts, the uniformity of the bolt tightening (where there is more than one bolt) as well as the type of extent of pipe damage, surface condition of the pipe, environmental conditions and installation workmanship.

Metallic components of repair clamps, including stainless steel, corrode at widely variable rates depending upon many factors, such as installation outdoors or underground, composition of surrounding atmosphere/soil, presence of stray currents, moisture or chemicals, etc. Consequently, repair clamps must be assumed to have a finite service life. Consult with a corrosion professional to determine the life expectancy of this repair clamp taking into consideration all appropriate factors in the application. The piping system designer should determine the suitability of this type product on your particular system. Unforeseen failure of this product could result if these precautions are not taken. Mueller Co. can provide additional material specification information on request by contacting Customer Service: 800-798-3131.

Mueller 530 Series Xtra-Range Full-Seal Stainless Steel Pipe Repair Clamps – for 4" through 12" cast iron and steel pipe.
Standard Lengths: 6", 7-1/2", 9", 10", 12', 15", 18", 20"

Nominal Pipe Size	Clamp Size Number	Clamp O.D. Range*				Cast Iron	Steel
		Inches		Millimeters			
		Min.	Max.	Min.	Max.		
4"	0474	4.74	5.54	120.4	140.7	50-250,A,B,C,D	-
6"	0594	5.94	6.74	150.9	171.2	-	6" O.D.
6"	0684	6.84	7.64	173.8	194.1	50-250,A,B,C,D	-
8"	0899	8.99	9.79	228.4	248.7	50-250,A,B,C,D	-
10"	1070	10.70	11.50	271.7	292.1	50-250,A,B,C,D	-
10"	1104	11.04	11.84	280.4	300.7		
10"	1160	11.60	12.40	294.6	315.0	-	STD
12"	1314	13.14	13.94	333.8	354.1	50-250,A,B,C,D	-
12"	1365	13.65	14.45	346.7	367.0	-	-

*Verify pipe O.D. before selecting clamp size.

Typical Xtra-Range Servi-Seal Stainless Steel Clamp



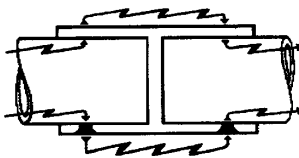
Style Number 531



Standard Bolt/nut



Deep Socket Wrenches



Bonding Device



Bonding Device

Mueller 531 - 539 Xtra-Range Servi-Seal Stainless Steel Pipe Repair Clamps - with integral 3/4" through 2" IP threaded service outlet - for 4" through 12" cast iron and steel pipe.

To specify the catalog number, provide the following information :

1. Style number – see chart below
2. Length – standard lengths can be found on the OD chart on the following page
3. Size number – refer to the OD chart on the following page after verifying pipe OD
4. Catalog number prefix for optional features, if desired

The catalog number for a Xtra-Range Servi-Seal Repair Clamp, with a 3/4" IP outlet, 12" clamp length for 6" cast iron pipe is 531-12-0684.

Clamp Style Number

Style Number	Size and Type of Outlet Tapping Thread	O.D. Ranges Available*
531	3/4" IP	4.70-13.96
533	1" IP	4.70-13.96
535	1-1/4" IP	4.70-13.96
537	1-1/2" IP	4.70-13.96
539	2" IP	4.70-13.96

*Clamps available to fit specific size pipe within this nominal size range.

Optional Extended Starting Bolts and Extra Bolts and Nuts for Mueller Xtra-Range Full Seal Stainless Repair Clamps

Clamps can be ordered with a longer bolt and longer nut in one bolt position to facilitate clamp installation.

To specify optional extended bolt/nut, add a suffix "X" to end of catalog number.

Example: 531-12-0684X

Clamp Size	Bolt Size	Bolt Part No.	Nut Part No.	Washer Part No.
2"-12" (Standard Bolt & Nut)	1/2" x 4-1/2"	522997	522998	522999

Deep Socket Wrenches

Specially designed for use with Mueller Full-Seal Repair Clamps. Long ratchet handle has thumb-tip reverse. Deep sockets (3-1/4") have double hex (12 pt.) and 1/2" square drive.

Part Number	Description
515204	15-3/4" with 1/2" reversible Ratchet Handle

Bonding Device For Cathodic Protection

Metallic conductors are set in the gasket to provide contact between the band and the pipe surface and are available on all 500 series clamps. These conductors permit electrical current flow by establishing positive contact with pipe and band on each side of the pipe crack or break. **To specify optional bonding device for cathodic protection, add a prefix of "2-" to catalog number.**

Example: 2-531-12-0684

IMPORTANT: MUELLER PIPE REPAIR CLAMPS have demonstrated their capability to seal against gas pressures commonly encountered in distribution systems. Smaller diameter clamps of a given design can seal against higher pressures than larger ones. In addition, the pressure that a clamp can contain is effected by the torque applied to the bolts, the uniformity of the bolt tightening (where there is more than one bolt) as well as the type of extent of pipe damage, surface condition of the pipe, environmental conditions and installation workmanship.

Metallic components of repair clamps, including stainless steel, corrode at widely variable rates depending upon many factors, such as installation outdoors or underground, composition of surrounding atmosphere/soil, presence of stray currents, moisture or chemicals, etc. Consequently, repair clamps must be assumed to have a finite service life. Consult with a corrosion professional to determine the life expectancy of this repair clamp taking into consideration all appropriate factors in the application. The piping system designer should determine the suitability of this type product on your particular system. Unforeseen failure of this product could result if these precautions are not taken. Mueller Co. can provide additional material specification information on request by contacting Customer Service: 800-798-3131.

Mueller 531-539 Xtra-Range Servi-Seal Stainless Steel Pipe Repair Clamps – for 4" through 12" cast iron and steel pipe.
Standard Lengths: 6", 7-1/2", 9", 10", 12", 15", 18", 20"

Nominal Pipe Size	Clamp Size Number	Clamp O.D. Range*				Cast Iron	Steel
		Inches		Millimeters			
		Min.	Max.	Min.	Max.		
4"	0405	4.05	4.85	102.9	123.2		
4"	0474	4.74	5.54	120.4	140.7	50-250,A,B,C,D	-
6"	0594	5.94	6.74	150.9	171.2	-	6" O.D.
6"	0684	6.84	7.64	173.8	194.1	50-250,A,B,C,D	-
8"	0899	8.99	9.79	228.4	248.7	50-250,A,B,C,D	-
10"	1070	10.70	11.50	271.8	292.1	50-250,A,B,C,D	-
10"	1104	11.04	11.84	280.4	300.7		
10"	1160	11.60	12.40	294.6	314.9	-	STD
12"	1314	13.14	13.94	333.8	354.1	50-250,A,B,C,D	-
12"	1365	13.65	14.45	346.7	367.0	-	-

*Verify pipe O.D. before selecting clamp size.

Mueller "all Stainless Steel" Full-Seal Pipe Repair Clamps provide an economical repair for circumferential breaks or cracks, multiple leaks or holes in pipe. They're available in standard lengths for cast and steel pipe and with add-on, etc. Each clamp size can accommodate a wide range of O.D. variations.

Lightweight all stainless steel pipe repair clamps resist corrosive atmospheres and hot soils. Available in single-section Full-Seal® style (Series 540), in two-section Xtra-Range® style (Series 550), and in Servi-Seal® style with welded-in service outlet.

Servi-Seal style is available in either single-section (Styles 541-549) or two-section (Styles 551-559).

Mueller 540 and 550 Series Full-Seal Stainless Steel Clamps features:



540 SERIES CLAMP



SERVI-SEAL Clamp



550 Series Clamp Xtra-Range

- **Maximum Gas Working Pressure** – for properly installed clamps at 150F maximum working temperature: 2"-8" 100 psig, 10"-12" cast iron or ductile iron pipes 60 psig, 10"-12" steel pipes 100 psig.
- **304L Stainless Steel "Gap Bridges"** – molded into the gasket where the band sections join, to provide 360° clamping pressure.
- **Tapered-End Gridded Gasket** – is made of specially compounded nitrile rubber has gridded pattern for positive sealing and tapered ends to make installation quick and easy.
- **Bands** – made of type 304L stainless steel and are machine-welded and fully passivated.
- **High-Strength Stainless Steel Bolts** – have spin-fit threads with heavy hex nuts that are Teflon coated, for fast installation.

IMPORTANT: MUELLER PIPE REPAIR CLAMPS have demonstrated their capability to seal against gas pressures commonly encountered in distribution systems. Smaller diameter clamps of a given design can seal against higher pressures than larger ones. In addition, the pressure that a clamp can contain is effected by the torque applied to the bolts, the uniformity of the bolt tightening (where there is more than one bolt) as well as the type of extent of pipe damage, surface condition of the pipe, environmental conditions and installation workmanship.

Metallic components of repair clamps, including stainless steel, corrode at widely variable rates depending upon many factors, such as installation outdoors or underground, composition of surrounding atmosphere/soil, presence of stray currents, moisture or chemicals, etc. Consequently, repair clamps must be assumed to have a finite service life. Consult with a corrosion professional to determine the life expectancy of this repair clamp taking into consideration all appropriate factors in the application. The piping system designer should determine the suitability of this type product on your particular system. Unforeseen failure of this product could result if these precautions are not taken. Mueller Co. can provide additional material specification information on request by contacting Customer Service: 800-798-3131.

Rev. 12-06 Shaded area indicates changes

Typical All Stainless Steel Series 540 Clamp



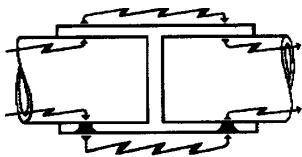
Style Number 540



Nut & Washer



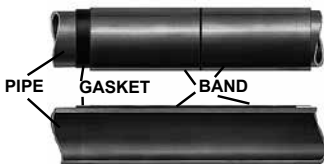
Deep Socket Wrenchs



Bonding Device



Bonding Device



Add-on feature

Mueller 540 Series Single Section Full-Seal Stainless Steel Pipe Repair Clamps - for 2" through 12" cast iron and steel pipe.

To specify the catalog number, provide the following information :

1. Style number – **540**
2. Length – **standard lengths can be found on the OD chart on the following page**
3. Size number – **refer to the OD chart on the following page after verifying pipe OD**
4. Catalog number prefix for optional features, if desired.

The catalog number for a 540 Single Section Full-Seal Repair Clamp, 12" long for 8" cast iron pipe is 540-12-0899.

Extra Nuts & Washers for Mueller Single Section Full Seal Stainless Repair Clamps

Clamp Size	Nut Part Number	Washer Part Number
4"-12" (Standard Bolt & Nut)	311581	311582

Deep Socket Wrenchs

Specially designed for use with Mueller Full- Seal Repair Clamps. Long ratchet handle has thumb-tip reverse. Deep sockets (3-1/4") have double hex (12 pt.) and 1/2" square drive.

Part Number	Description
515204	15-3/4" reversible Ratchet Handle
515207	1-1/16" Socket

Bonding Device for Cathodic Protection

Metallic conductors are set in the gasket to provide contact between the band and the pipe surface and are available on all 500 series clamps. These conductors permit electrical current flow by establishing positive contact with pipe and band on each side of the pipe crack or break.

To specify optional bonding device for cathodic protection, add a prefix of "2-" to catalog number.
Example: 2-540-12-0899

Add-on feature allows long lengthwise repairs

The gasket is cemented into the band in a 1" offset position. This allows overlapping the gasket with the band of another offset clamp when repairing a longer than usual area of pipe. This feature is not available on Servi-Seal style clamps.

To specify optional add-on feature for longer than usual repairs, add a prefix of "1-" to catalog number.

Example: 1-540-12-0899.

IMPORTANT: MUELLER PIPE REPAIR CLAMPS have demonstrated their capability to seal against gas pressures commonly encountered in distribution systems. Smaller diameter clamps of a given design can seal against higher pressures than larger ones. In addition, the pressure that a clamp can contain is effected by the torque applied to the bolts, the uniformity of the bolt tightening (where there is more than one bolt) as well as the type of extent of pipe damage, surface condition of the pipe, environmental conditions and installation workmanship.

Metallic components of repair clamps, including stainless steel, corrode at widely variable rates depending upon many factors, such as installation outdoors or underground, composition of surrounding atmosphere/soil, presence of stray currents, moisture or chemicals, etc. Consequently, repair clamps must be assumed to have a finite service life. Consult with a corrosion professional to determine the life expectancy of this repair clamp taking into consideration all appropriate factors in the application. The piping system designer should determine the suitability of this type product on your particular system. Unforeseen failure of this product could result if these precautions are not taken. Mueller Co. can provide additional material specification information on request by contacting Customer Service: 800-798-3131.

**MUELLER® 540 SERIES SINGLE SECTION
FULL-SEAL® STAINLESS STEEL PIPE REPAIR CLAMPS**



16.21

Shaded area indicates change Rev. 12-06

Mueller 540 Series Single Section Full-Seal Stainless Steel Pipe Repair Clamps – for 2" through 12" cast iron, ductile iron and steel pipe. Standard Lengths: 7-1/2", 10", 12-1/2", 15", 20", 25"

Nominal Pipe Size	Clamp Size Number	Clamp O.D. Range*				Cast Iron	Steel
		Inches		Millimeters			
		Min.	Max.	Min.	Max.		
2"†	0235	2.35	2.63	59.7	66.8	50-250,A,B,C,D	2"
2-1/2"†	0270	2.70	3.00	68.6	76.2	50-250,A,B,C,D	2-1/2"
3"†	0297	2.97	3.25	75.5	82.5	-	3" O.D.
3"†	0345	3.45	3.70	87.6	94.0	-	3"
3"†	0373	3.73	4.00	94.8	101.6	50-250,A,B,C,D	-
3-1/2"†	0395	3.95	4.25	100.3	107.9	-	3-1/2" (4" O.D.)
4"	0445	4.45	4.85	113.1	123.2	50-250,A	STD
4"	0474	4.74	5.14	120.4	130.5	50-250,A,B,C,D	-
4"	0495	4.95	5.35	125.8	135.8	-	-
6"	0595	5.95	6.35	151.1	161.3	-	6" O.D.
6"	0656	6.56	6.96	166.6	176.8	50-250,A	STD
6"	0684	6.84	7.24	173.8	183.8	50-250,A,B,C,D	-
6"	0705	7.05	7.45	179.1	189.2	-	-
6"	0740	7.40	7.80	188.0	198.1	-	-
8"	0795	7.95	8.35	201.9	212.1	-	8" O.D.
8"	0854	8.54	8.94	216.9	227.1	-	STD
8"	0899	8.99	9.39	228.4	238.5	50-250,A,B,C,D	-
8"	0927	9.27	9.67	235.5	245.6	-	-
10"	0970	9.70	10.10	246.4	256.5	-	10" O.D.
10"	1070	10.70	11.10	271.8	281.9	-	STD
10"	1104	11.04	11.44	280.5	290.6	50-250,A,B,C,D	-
10"	1140	11.40	11.80	289.6	299.7	-	-
10"	1175	11.75	12.15	298.5	308.6	-	12" O.D.
12"	1200	12.00	12.40	304.8	315.0	-	-
12"	1262	12.62	13.02	320.5	330.7	-	STD
12"	1310	13.10	13.50	332.7	342.9	50-250,A,B,C,D	-
12"	1340	13.40	13.80	340.4	350.5	-	-
12"	1400	14.00	14.40	355.7	365.7	-	14"

*Verify pipe O.D. before selecting clamp size.
†2"-3-1/2" Standard length is 7-1/2", 10", 12-1/2", 15"

Rev. 12-06 Shaded area indicates changes

Typical Single Section Stainless Steel Servi-Seal Clamp



Mueller 541 - 549 Single Section Servi-Seal Stainless Steel Pipe Repair Clamps - with integral 3/4" through 2" IP threaded service outlet for 2" through 12" cast iron and steel pipe. To specify the catalog number, provide the following information:

1. Style number – **see chart below**
2. Length – **standard lengths can be found on the OD chart on the following page**
3. Size number – **refer to the OD chart on the following page after verifying pipe OD**
4. Catalog number prefix for optional features, if desired.

The catalog number for a Single Section Servi-Seal Repair Clamp with 3/4" IP outlet, 12" clamp length for 8" cast iron pipe is 541-12-0899.

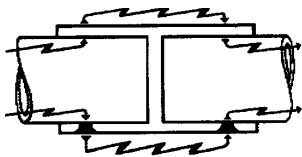
Style Number 541-549



Nut & Washer



Deep Socket Wrenchs



Bonding Device



Bonding Device

Clamp Style Number

Style Number	Size / Type of Outlet Tapping Thread	Sizes Available*
541	3/4" IP	2.35-14.40
543	1" IP	2.35-14.40
545	1-1/4" IP	4.13-14.40
547	1-1/2" IP	4.13-14.40
549	2" IP	4.13-14.40

*Clamps available to fit specific size pipe within this nominal range.

Extra Nuts and Washers for Mueller Single Section Full-Seal Stainless Repair Clamps

Clamp Size	Nut Part Number	Washer Part Number
4"-12" (Standard Bolt & Nut)	311581	311582

Deep Socket Wrenchs

Specially designed for use with Mueller Full-Seal Repair Clamps. Long ratchet handle has thumb-tip reverse. Deep sockets (3-1/4") have double hex (12 pt.) and 1/2" square drive.

Part Number	Description
515204	15-3/4" with 1/2" reversible Ratchet Handle
515207	1-16" Socket

Bonding Device for Cathodic Protection

Metallic conductors are set in the gasket to provide contact between the band and the pipe surface and are available on all 500 series clamps. These conductors permit electrical current flow by establishing positive contact with pipe and band on each side of the pipe crack or break. **To specify optional bonding device** for cathodic protection, add a prefix of "2-" to catalog number.

Example: 2-541-12-0899.

IMPORTANT: MUELLER PIPE REPAIR CLAMPS have demonstrated their capability to seal against gas pressures commonly encountered in distribution systems. Smaller diameter clamps of a given design can seal against higher pressures than larger ones. In addition, the pressure that a clamp can contain is effected by the torque applied to the bolts, the uniformity of the bolt tightening (where there is more than one bolt) as well as the type of extent of pipe damage, surface condition of the pipe, environmental conditions and installation workmanship.

Metallic components of repair clamps, including stainless steel, corrode at widely variable rates depending upon many factors, such as installation outdoors or underground, composition of surrounding atmosphere/soil, presence of stray currents, moisture or chemicals, etc. Consequently, repair clamps must be assumed to have a finite service life. Consult with a corrosion professional to determine the life expectancy of this repair clamp taking into consideration all appropriate factors in the application. The piping system designer should determine the suitability of this type product on your particular system. Unforeseen failure of this product could result if these precautions are not taken. Mueller Co. can provide additional material specification information on request by contacting Customer Service: 800-798-3131.

**MUELLER® 540 SERIES SINGLE SECTION
SERVI-SEAL® STAINLESS STEEL PIPE REPAIR CLAMPS**



16.23

Shaded area indicates change Rev. 6-10

**Mueller 541-549 Single Section Servi-Seal Stainless Steel Pipe Repair Clamps – for 2" through 12" cast iron and steel pipe.
Standard Lengths: 7-1/2", 10", 12-1/2", 15", 20", 25"**

Nominal pipe size	Clamp size number	Clamp O.D. range*				Cast Iron	Steel
		Inches		Millimeters			
		Min.	Max.	Min.	Max.		
2"†	0235	2.35	2.63	59.7	66.8	50-250,A,B,C,D	2"
2-1/2"†	0270	2.70	3.00	68.6	76.2	50-250,A,B,C,D	2-1/2"
3"†	0297	2.97	3.25	75.5	82.5	-	3" O.D.
3"†	0345	3.45	3.70	87.6	94.0	-	3"
3"†	0373	3.73	4.00	94.8	101.6	50-250,A,B,C,D	-
3-1/2"†	0395	3.95	4.25	100.3	107.9	-	3-1/2" (4" O.D.)
4"	0445	4.45	4.85	113.1	123.2	50-250,A	STD
4"	0474	4.74	5.14	120.4	130.5	50-250,A,B,C,D	-
4"	0495	4.95	5.35	125.8	135.8	-	-
4"	0522	5.22	5.62	132.6	142.7	-	5" STD
6"	0595	5.95	6.35	151.1	161.3	-	6" O.D.
6"	0656	6.56	6.96	166.6	176.8	50-250,A	STD
6"	0684	6.84	7.24	173.8	183.8	50-250,A,B,C,D	-
6"	0705	7.05	7.45	179.1	189.2	-	-
6"	0740	7.40	7.80	188.0	198.1	-	-
8"	0795	7.95	8.35	201.9	212.1	-	8" O.D.
8"	0854	8.54	8.94	216.9	227.1	-	STD
8"	0899	8.99	9.39	228.4	238.5	50-250,A,B,C,D	-
8"	0927	9.27	9.67	235.5	245.6	-	-
10"	0970	9.70	10.10	246.4	256.5	-	10" O.D.
10"	1070	10.70	11.10	271.8	281.9	-	STD
10"	1104	11.04	11.44	280.5	290.6	50-250,A,B,C,D	-
10"	1140	11.40	11.80	289.6	299.7	-	-
10"	1175	11.75	12.15	298.5	308.6	-	12" O.D.
12"	1200	12.00	12.40	304.8	315.0	-	-
12"	1262	12.62	13.02	320.5	330.7	-	STD
12"	1310	13.10	13.50	332.7	342.9	50-250,A,B,C,D	-
12"	1340	13.40	13.80	340.4	350.5	-	-
12"	1400	14.00	14.40	355.7	365.7	-	14"

*Verify pipe O.D. before selecting clamp size.
†2"-3-1/2" Standard length is 7-1/2", 10", 12-1/2", 15"

Rev. 12-06 Shaded area indicates changes

Typical Xtra-Range Full-Seal Stainless Steel Clamp



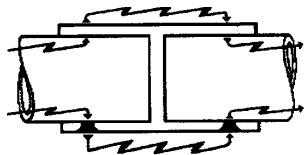
Style Number 550



Nut & Washer



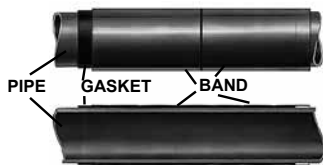
Deep Socket Wrenches



Bonding Device



Bonding Device



Add-on feature

Mueller 550 Series Xtra-Range Full-Seal Stainless Steel Pipe Repair Clamps - for 3" through 12" cast iron and steel pipe.

To specify the catalog number, provide the following information :

1. Style number – **550**
2. Length – **standard lengths can be found on the OD chart on the following page**
3. Size number – **refer to the OD chart on the following page after verifying pipe OD**
4. Catalog number prefix for optional features, if desired.

The catalog number for a 550 Xtra-Range Full-Seal Repair Clamp, 12" long for 6" cast iron pipe is 550-12-0684.

Extra Nuts and Washers for Mueller Xtra-Range Full-Seal Stainless Repair Clamps

Clamp Size	Nut Part Number	Washer Part Number
3"-12" (Standard Nut)	311581	311582

Deep Socket Wrenches

Specially designed for use with Mueller Full-Seal Repair Clamps. Long ratchet handle has thumb-tip reverse. Deep sockets (3-1/4") have double hex (12 pt.) and 1/2" square drive.

Part Number	Description
515204	15-3/4" with 1/2" reversible Ratchet Handle
515207	1-1/16" Socket for 4" and larger clamps

Bonding Device for Cathodic Protection

Metallic conductors are set in the gasket to provide contact between the band and the pipe surface and are available on all 500 series clamps. These conductors permit electrical current flow by establishing positive contact with pipe and band on each side of the pipe crack or break.

To specify optional bonding device for cathodic protection, add a prefix of "2-" to catalog number.

Example: 2-550-12-0684

Add-on feature allows long lengthwise repairs

The gasket is cemented into the band in a 1" offset position. This allows overlapping the gasket with the band of another offset clamp when repairing a longer than usual area of pipe. This feature is not available on Servi-Seal style clamps.

To specify optional add-on feature for longer than usual repairs, add a prefix of "1-" to catalog number.

Example: 1-550-12-0684

IMPORTANT: MUELLER PIPE REPAIR CLAMPS have demonstrated their capability to seal against gas pressures commonly encountered in distribution systems. Smaller diameter clamps of a given design can seal against higher pressures than larger ones. In addition, the pressure that a clamp can contain is effected by the torque applied to the bolts, the uniformity of the bolt tightening (where there is more than one bolt) as well as the type of extent of pipe damage, surface condition of the pipe, environmental conditions and installation workmanship.

Metallic components of repair clamps, including stainless steel, corrode at widely variable rates depending upon many factors, such as installation outdoors or underground, composition of surrounding atmosphere/soil, presence of stray currents, moisture or chemicals, etc. Consequently, repair clamps must be assumed to have a finite service life. Consult with a corrosion professional to determine the life expectancy of this repair clamp taking into consideration all appropriate factors in the application. The piping system designer should determine the suitability of this type product on your particular system. Unforeseen failure of this product could result if these precautions are not taken. Mueller Co. can provide additional material specification information on request by contacting Customer Service: 800-798-3131.

**MUELLER® 550 SERIES XTRA-RANGE®
FULL-SEAL® STAINLESS STEEL PIPE REPAIR CLAMPS**



16.25

Shaded area indicates change Rev. 12-06

**Mueller 550 Series Xtra-Range Full-Seal Stainless Steel Pipe Repair Clamps – for 3" through 12" cast iron and steel pipe.
Standard Lengths: 7-1/2", 10", 12-1/2", 15", 20", 25"**

Nominal Pipe Size	Clamp Size Number	Clamp O.D. Range*				Cast Iron	Steel
		Inches		Millimeters			
		Min.	Max.	Min.	Max.		
3"	0349	3.49	4.29	88.6	109.0	-	-
4"	0444	4.44	5.24	112.8	133.1	-	-
4"	0474	4.74	5.57	120.4	141.5	50-250,A,B,C,D	-
6"	0662	6.62	7.42	168.1	188.5	-	STD
6"	0684	6.84	7.64	173.8	194.1	50-250,A,B,C,D	-
8"	0862	8.62	9.42	218.9	239.3	-	STD
8"	0899	8.99	9.79	228.3	248.7	50-250,A,B,C,D	-
10"	1075	10.75	11.55	273.0	293.4	-	-
10"	1110	11.10	11.90	281.9	302.3	50-250,A,B,C,D	-
10"	1160	11.60	12.40	294.6	315.0	-	-
12"	1275	12.75	13.55	323.8	344.8	-	-
12"	1320	13.20	14.00	335.3	355.6	50-250,A,B,C,D	-
12"	1365	13.65	14.45	346.7	367.0	-	-
12"	1400	14.00	14.80	355.6	375.9	-	-

*Verify pipe O.D. before selecting clamp size.

Rev. 12-06 Shaded area indicates changes

Typical Xtra-Range Stainless Steel Servi-Seal Clamps



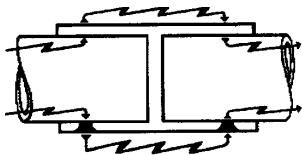
Style Number 551-559



Nut & Washer



Deep Socket Wrenches



Bonding Device



Bonding Device

Mueller 551 - 559 Xtra-Range Servi-Seal Stainless Steel Pipe Repair Clamps - with intergral 3/4"-2" IP threaded service outlet - for 3" through 12" cast iron, ductile iron, and steel pipe.

To specify the catalog number, provide the following information :

1. Style number – see chart below
2. Length – standard lengths can be found on the OD chart on the following page
3. Size number – refer to the OD chart on the following page after verifying pipe OD
4. Catalog number prefix for optional features, if desired.

The catalog number for a Xtra-Range Servi-Seal Repair Clamp, with a 3/4" IP outlet, 12" clamp length for 6" cast iron pipe is 551-12-684

Clamp Style Number

Style Number	Size / Type of Outlet Tapping Thread	O.D. Ranges Available*
551	3/4" IP	3.49-14.80
553	1" IP	3.49-14.80
555	1-1/4" IP	4.44-14.80
557	1-1/2" IP	4.44-14.80
559	2" IP	4.44-14.80

*Clamps available to fit specific size pipe within this nominal range.

Extra Nuts and Washers for Mueller Single Section Full-Seal Stainless Repair Clamps

Clamp Size	Nut Part Number	Washer Part Number
3"-12" (Standard Nut)	311581	311582

Deep Socket Wrenches

Specially designed for use with Mueller Full-Seal Repair Clamps. Long ratchet handle has thumb-tip reverse. Deep sockets (3-1/4") have double hex (12 pt.) and 1/2" square drive.

Part Number	Description
515204	15-3/4" with 1/2" reversible Ratchet Handle
515207	1-1/16" Socket for 2" and larger clamps

Bonding Device for Cathodic Protection

Metallic conductors are set in the gasket to provide contact between the band and the pipe surface and are available on all 500 series clamps. These conductors permit electrical current flow by establishing positive contact with pipe and band on each side of the pipe crack or break.

To specify optional bonding device for cathodic protection, add a prefix of "2-" to catalog number.
Example: 2-551-12-0684

IMPORTANT: MUELLER PIPE REPAIR CLAMPS have demonstrated their capability to seal against gas pressures commonly encountered in distribution systems. Smaller diameter clamps of a given design can seal against higher pressures than larger ones. In addition, the pressure that a clamp can contain is effected by the torque applied to the bolts, the uniformity of the bolt tightening (where there is more than one bolt) as well as the type of extent of pipe damage, surface condition of the pipe, environmental conditions and installation workmanship.

Metallic components of repair clamps, including stainless steel, corrode at widely variable rates depending upon many factors, such as installation outdoors or underground, composition of surrounding atmosphere/soil, presence of stray currents, moisture or chemicals, etc. Consequently, repair clamps must be assumed to have a finite service life. Consult with a corrosion professional to determine the life expectancy of this repair clamp taking into consideration all appropriate factors in the application. The piping system designer should determine the suitability of this type product on your particular system. Unforeseen failure of this product could result if these precautions are not taken. Mueller Co. can provide additional material specification information on request by contacting Customer Service: 800-798-3131.

**MUELLER® 550 SERIES XTRA-RANGE® SERVI-SEAL®
STAINLESS STEEL PIPE REPAIR CLAMPS**



16.27

Shaded area indicates change Rev. 12-06

**Mueller 551-559 Xtra-Range Servi-Seal Stainless Steel Pipe Repair Clamps – for 3" through 12" cast iron and steel pipe.
Standard Lengths: 7-1/2", 10", 12-1/2", 15", 20", 25"**

Nominal Pipe Size	Clamp Size Number	Clamp O.D. Range*				Cast Iron	Steel
		Inches		Millimeters			
		Min.	Max.	Min.	Max.		
3"	0349	3.49	4.29	88.6	109.0	-	-
4"	0444	4.44	5.24	112.8	133.1	-	-
4"	0474	4.74	5.57	120.4	141.5	50-250,A,B,C,D	-
6"	0662	6.62	7.42	168.1	188.5	-	STD
6"	0684	6.84	7.64	173.8	194.1	50-250,A,B,C,D	-
8"	0862	8.62	9.42	218.9	239.3	-	STD
8"	0899	8.99	9.79	228.3	248.7	50-250,A,B,C,D	-
10"	1075	10.75	11.55	273.0	293.4	-	-
10"	1110	11.10	11.90	281.9	302.3	50-250,A,B,C,D	-
10"	1160	11.60	12.40	294.6	315.0	-	-
12"	1275	12.75	13.55	323.8	344.8	-	-
12"	1320	13.20	14.00	335.3	355.6	50-250,A,B,C,D	-
12"	1365	13.65	14.45	346.7	367.0	-	-
12"	1400	14.00	14.80	355.6	375.9	-	-

*Verify pipe O.D. before selecting clamp size.

Rev. 6-17 Shaded area indicates changes

The 200 Series Pipe-Saver Clamp comes in 3", 6", 9", 12", and 18" lengths, in single section to fit 1/2" - 8" standard steel pipe, and in two sections to fit 10" - 24" standard steel pipe.

Cemented-in gaskets are available with a choice of smooth or gridded surfaces, and regular or full coverage. High carbon steel bolts with corrosion-resistant plating are standard; stainless steel bolts optional.

Mueller 200 Series Pipe-Saver clamp features:



- Maximum Gas Working Pressure** - for properly installed clamps with nuts tightened to 500 inch-pounds torque: 1/2"-4" 175; 6"-8" 100 psig; 10"-12" 75 psig; 14"-16" 50 psig; 18"-24" 30 psig
- Repair Holes and Splits**
- Choice of Smooth or Gridded** - regular or full coverage gaskets.
- Heavy Bolt Shoulders** - prevent turning in lug.
- Steel Bolt** - has rolled, spin-fit threads to speed installation.
- Heavy Hex Nut** - provides more thread contact for greater strength.
- Type 304L stainless steel band**
- Ductile Iron Lugs** - are shaped to provide uniform clamping pressure on pipe.

IMPORTANT: MUELLER PIPE REPAIR CLAMPS have demonstrated their capability to seal against gas pressures commonly encountered in distribution systems. Smaller diameter clamps of a given design can seal against higher pressures than larger ones. In addition, the pressure that a clamp can contain is effected by the torque applied to the bolts, the uniformity of the bolt tightening (where there is more than one bolt) as well as the type of extent of pipe damage, surface condition of the pipe, environmental conditions and installation workmanship.

Metallic components of repair clamps, including stainless steel, corrode at widely variable rates depending upon many factors, such as installation outdoors or underground, composition of surrounding atmosphere/soil, presence of stray currents, moisture or chemicals, etc. Consequently, repair clamps must be assumed to have a finite service life. Consult with a corrosion professional to determine the life expectancy of this repair clamp taking into consideration all appropriate factors in the application. The piping system designer should determine the suitability of this type product on your particular system. Unforeseen failure of this product could result if these precautions are not taken. Mueller Co. can provide additional material specification information on request by contacting Customer Service: 800-798-3131.

**Typical 200 Series
 Pipe-Saver Clamps**



220

**Two Section Clamp with
 Regular Gasket Coverage**



218

**Single Section Clamp with
 Regular Gasket Coverage**



211

**Single Section Clamp with
 Full Gasket Coverage**



212

**Single Section Clamp with
 Full Gasket Coverage**

Mueller 200 Series Pipe-Saver Pipe Repair Clamps - for 1/2" through 24" standard steel pipe

To specify the catalog number, use the charts to select the following information for the desired clamp:

1. Style number
2. Length
3. Size number

Example :

The catalog number for a 220 Style Clamp, 3" long for 1-1/2" steel pipe is 220-03-0190.

Clamp style number

Style number	Type of Gasket	Gasket Coverage	Bolts		Sizes available*
			Corrosion Resistant Plating	Stainless Steel	
210	Smooth	Full	X		1/2"-24"
211	Smooth	Full		X	1/2"-24"
212	Gridded	Full	X		1/2"-24"
213	Gridded	Full		X	1/2"-24"
218	Smooth	Regular	X		1-1/2"-24"
219	Smooth	Regular		X	1-1/2"-24"
220	Gridded	Regular	X		1-1/2"-24"
221	Gridded	Regular		X	1-1/2"-24"

*Clamps available to fit specific size standard steel pipe within this nominal size range.

Clamp Length and Clamp Size Number

Std. Steel Pipe Size††	Clamp Size Number	Std. Steel Pipe O.D.	Number of Clamp Sections
1/2"	0084	0.840	1
3/4"	0105	1.050	
1"	0131	1.315	
1-1/4"	0166	1.660	
1-1/2"	0190	1.900	
2"	0237	2.375	
2-1/2"	0287	2.875	
3"	0350	3.500	
3-1/2"	0400	4.00	
4"	0450	4.500	
5"	0556	5.563	
6"	0662	6.625	
8"	0862	8.625	
10"	1075	10.750	2
12"	1275	12.750	
14"	1400	14.000	
16"	1600	16.000	
18"	1800	18.000	
20"	2000	20.000	
24"	2400	24.000	

†† Nominal Sizes .

**Single Section Clamps
 1/2"-8" O.D.**

Clamp Lengths Available	Number of Bolts
3"	1
6"	2
9"	3
12"	4
18"	6

**Two Section Clamps
 10"-24" O.D.**

Clamp Lengths Available	Number of Bolts
3"	2
6"	4
9"	6
12"	8
18"	12

IMPORTANT: MUELLER PIPE REPAIR CLAMPS have demonstrated their capability to seal against gas pressures commonly encountered in distribution systems. Smaller diameter clamps of a given design can seal against higher pressures than larger ones. In addition, the pressure that a clamp can contain is effected by the torque applied to the bolts, the uniformity of the bolt tightening (where there is more than one bolt) as well as the type of extent of pipe damage, surface condition of the pipe, environmental conditions and installation workmanship.

Metallic components of repair clamps, including stainless steel, corrode at widely variable rates depending upon many factors, such as installation outdoors or underground, composition of surrounding atmosphere/soil, presence of stray currents, moisture or chemicals, etc. Consequently, repair clamps must be assumed to have a finite service life. Consult with a corrosion professional to determine the life expectancy of this repair clamp taking into consideration all appropriate factors in the application. The piping system designer should determine the suitability of this type product on your particular system. Unforeseen failure of this product could result if these precautions are not taken. Mueller Co. can provide additional material specification information on request by contacting Customer Service: 800-798-3131.

The stainless steel 230 Series Mini-Band Clamp features full 360° sealing capability for repairing pinholes, punctures, splits and small abrasions on 1/2" - 4" diameter steel or copper pipe. The Mini-Band Clamp is used to stop leaks from pinholes, splits, or circumferential breaks until permanent repairs can be made.

The clamp can also be used as a "pinch-mark" on polyethylene pipe, helping restore the pipe to its full roundness and increasing gas flow. It is available in 3", 6", 9", 12", and 18" lengths. The gasket includes integral stainless steel gap bridges that are recessed and bonded to the gasket. Zinc-plated steel bolts are used on the 230 series clamps; stainless steel bolts are used on the 231 series.

Mueller 230 Series Mini-Band clamp features:



- ❑ **Maximum Pressure Rating** – for properly installed clamp: 150 psig (1034 kPa) on steel or copper.
- ❑ **Full Encirclement** – gasket wraps 360° for uniform seal on larger leaks.
- ❑ **304L Stainless Steel "Gap Bridges"** – molded into gasket where band sections join and add support to provide 360° clamping pressure.
- ❑ **Compact & Convenient Size** – small size fits in tight spaces, available to repair 1/2" - 4" pipes made of steel or copper. Choice of 3", 6", 9", 12", and 18" lengths.
- ❑ **Bands** – made of type 304L stainless steel and includes ductile iron lugs.

IMPORTANT: MUELLER PIPE REPAIR CLAMPS have demonstrated their capability to seal against gas pressures commonly encountered in distribution systems. Smaller diameter clamps of a given design can seal against higher pressures than larger ones. In addition, the pressure that a clamp can contain is effected by the torque applied to the bolts, the uniformity of the bolt tightening (where there is more than one bolt) as well as the type of extent of pipe damage, surface condition of the pipe, environmental conditions and installation workmanship.

Metallic components of repair clamps, including stainless steel, corrode at widely variable rates depending upon many factors, such as installation outdoors or underground, composition of surrounding atmosphere/soil, presence of stray currents, moisture or chemicals, etc. Consequently, repair clamps must be assumed to have a finite service life. Consult with a corrosion professional to determine the life expectancy of this repair clamp taking into consideration all appropriate factors in the application. The piping system designer should determine the suitability of this type product on your particular system. Unforeseen failure of this product could result if these precautions are not taken. Mueller Co. can provide additional material specification information on request by contacting Customer Service: 800-798-3131.

Typical MINI-BAND Clamp



Style number 230

Mueller 230 Series Mini-Band Pipe Repair Clamps - for 1/2" through 4" rigid copper and steel pipe.

To specify the catalog number, use the charts to select the following information for the desired clamp:

1. Style number **230** (change "0" to "1" for stainless steel bolt option)
2. Length: "03" for 3" or "06" for 6"
3. Size number (**from chart below**)

Example:

The catalog number for a 230 Style clamp, 6" long for 1" steel, with the stainless steel bolt option is 231-06-0132

Nominal pipe size	Clamp size number	Pipe O.D.	
		Standard steel	Copper
1/4"	0063	-	0.625
	0084	0.840	-
3/4"	0088	-	0.875
	0105	1.050	-
1"	0113	-	1.125
	0132	1.315	-
1-1/4"	0138	-	1.375
	0166	1.660	-
1-1/2"	0163	-	1.625
	0190	1.900	-
2"	0213	-	2.125
	0238	2.375	-
4"	0450	4.500	-



Extra bolts for Mueller 200 Series Pipe-Saver and 230 Mini-Band Repair Clamps

Clamp Size	Bolt Size	Part Numbers			
		Corrosion Resistive Plating	Stainless Steel		
			Bolt	Nut	Washer
1/2" - 1"	3/8" x 3"	584534	513363	510364	510372
1-1/4", 1-1/2"	3/8" x 3-1/2"	584535	513364	510365	510373
2" - 5"	7/16" x 4"	584537	513366	510365	510373
6" - 24"	7/16" x 5"	584538	513367	510365	510373

IMPORTANT: MUELLER PIPE REPAIR CLAMPS have demonstrated their capability to seal against gas pressures commonly encountered in distribution systems. Smaller diameter clamps of a given design can seal against higher pressures than larger ones. In addition, the pressure that a clamp can contain is effected by the torque applied to the bolts, the uniformity of the bolt tightening (where there is more than one bolt) as well as the type of extent of pipe damage, surface condition of the pipe, environmental conditions and installation workmanship.

Metallic components of repair clamps, including stainless steel, corrode at widely variable rates depending upon many factors, such as installation outdoors or underground, composition of surrounding atmosphere/soil, presence of stray currents, moisture or chemicals, etc. Consequently, repair clamps must be assumed to have a finite service life. Consult with a corrosion professional to determine the life expectancy of this repair clamp taking into consideration all appropriate factors in the application. The piping system designer should determine the suitability of this type product on your particular system. Unforeseen failure of this product could result if these precautions are not taken. Mueller Co. can provide additional material specification information on request by contacting Customer Service: 800-798-3131.

Rev. 7-17 Shaded area indicates changes

Tapered Screw Plugs



Tapered screw plugs are used to stop leaks in steel pipe lines, boilers, tanks and large diameter pipe lines. They are self threading. Install tapered screw plugs by screwing into hole and welding in place. Plugs are made of heat treated steel alloy.

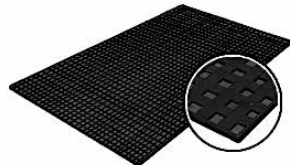
Part Number	Size
514258	3/8" Hex x 1-1/4" Long
514259	5/8" Hex x 2-1/8" Long
514260	7/8" Hex x 2-3/4" Long
514261	1" Hex x 3-1/4" Long

Gasket Material for Pipe Repair Clamps



Smooth Nitrile Gasket Material

Part Number	Thickness		Size		Approximate Weight	
	inch	(mm)	inch	(mm)	lb	(kg)
307263	3/32	(2.4)	36 x 36	(914 x 914)	3	(1.4)
307260	13/64	(5.2)	36 x 36	(914 x 914)	10	(4.5)



Gridded Nitrile Gasket Material

Part Number	Dimensions	
	inch	(mm)
307264	Slab 24 x 60 x .200	(610 x 1524 x 5)

Options available to modify repair clamps:

- "S" – Add 304L stainless steel bolts, nuts & washers
- "1" – Add-on feature to allow long lengthwise repairs
- "2" – Bonding device for cathodic protection
- "3" – Bonding device and stainless steel bolts & nuts
- "4" – One extra nut assembled to any lug bolt
- "5" – Bonding device and one extra nut assembled to any lug bolt
- "6" – Add-on feature and bonding device
- "7" – Add-on feature and stainless steel bolts, nuts & washers

Mueller Service Saddles are available in single strap or double strap designs. These saddles fit steel, cast iron and ductile iron pipe in diameters from 2" to 16" and can be ordered with boss tapping from 1/2" to 2" IP sizes.

The saddle portion is ductile iron. The straps are steel and are flattened to increase the area in contact with the pipe decreasing the possibility of pipe damage. The saddle is nylon coated and the steel straps are plated to resist corrosion. Extra wide 304L stainless steel straps are optional. A large diameter nitrile O-ring seals the outlet boss and is cemented in place.

When properly installed, the double strap saddles have a maximum working pressure of 250 psig and the single strap 125 psig.

Mueller Service Saddles for cast iron, ductile iron and steel pipe features:



- **Rolled Strap Threads** – for added strength and past "spin-on" nut assembly.
- **Body Curvature** – designed to fit pipe accurately for secure clamping and uniform sealing pressure.
- **Strong Ductile Iron Body** – per ASTM A-395.
- **Forged Alloy Steel Straps** – are zinc plated, and are extra large and flattened to provide increased gripping surface.
- **250 PSIG (1725 kPa/17 barg)** – maximum working pressure for double strap design and 125 psig (861 kPa) for single strap design. These pressure ratings apply when clamped with 5/8" nuts are torqued per instruction tag.
- **Nylon Coated Saddle** – fluidized bed applied, 10-12 mil thick coating is standard - superior corrosion resistance, non-conductive, and unique capability to flex with saddle as it is tightened to conform to pipe OD.
- **Thick Tapping Boss** – has precision machined, full-length threads for a pressure tight connection that resists pull-out.
- **Optional 304L Stainless Steel Straps** – for additional pipe support.
- **Nitrile O-Ring Gasket** – oil resistant seal cemented in a controlled groove to resist blow out at higher pressures.

Rev. 12-06 Shaded area indicates changes

Mueller® Ductile Iron Service Saddles for use on cast iron, ductile iron and steel pipe with I.P. thread tapping boss



Single Strap Design

Double Strap Design

- Tapping boss with I.P. thread.
- Single strap design rated at 125 psig (862 kPa) maximum working pressure
- Double strap design rated at 250 psig (1724 kPa) maximum working pressure
- Ductile iron body coated with Rilsan® Nylon 11 Coating
- Flattened alloy steel zinc plated straps
- Rolled strap threads
- Nitrile O-Ring

Mueller Ductile Iron Service Saddles with Alloy Steel Straps and I.P. threads

Pipe O.D. Range		Type & Size of Pipe		Single Alloy Steel Strap with I.P. Threads						Double Alloy Steel Strap with I.P. Threads							
Inches	mm	Steel	Cast or Ductile Iron	Base Catalog Number	Size of Tap (add to base number)						Base Catalog Number	Size of Tap (add to base number)					
					1/2"	3/4"	1"	1-1/4"	1-1/2"	2"		1/2"	3/4"	1"	1-1/4"	1-1/2"	2"
2.35 - 2.50	59.7 - 63.5	2"	2**	DR 1 A 0235 IP	50	75	100	-	-	-	DR 2 A 0235 IP	50	75	100	-	-	-
2.85 - 2.91	72.4 - 73.9	2-1/2"	2-1/2"	DR 1 A 0285 IP	50	75	100	-	-	-	DR 2 A 0285 IP	50	75	100	-	-	-
3.56 - 4.00	91.0 - 101.0	3-1/2"	3"	DR 1 A 0356 IP	50	75	100	-	-	-	DR 2 A 0356 IP	50	75	100	-	-	-
4.47 - 5.32	114.3 - 122.0	4"	4"	DR 1 A 0447 IP	50	75	100	125	150	200	DR 2 A 0447 IP	50	75	100	125	150	200
6.59 - 7.37	167.4 - 187.2	6"	6"	DR 1 A 0659 IP	50	75	100	125	150	200	DR 2 A 0659 IP	50	75	100	125	150	200
8.54 - 9.79	216.9 - 248.7	8"	8"	DR 1 A 0854 IP	50	75	100	125	150	200	DR 2 A 0854 IP	50	75	100	125	150	200
10.64 - 12.12	270.3 - 307.8	10"	10"	DR 1 A 1064 IP	50	75	100	-	-	-	DR 2 A 1064 IP	50	75	100	125	150	200
12.62 - 14.38	320.5 - 365.3	12"	12"	DR 1 A 1262 IP	50	75	100	-	-	-	DR 2 A 1262 IP	50	75	100	125	150	200
17.40 - 18.80	442.0 - 477.5	-	16"	-	-	-	-	-	-	-	DR 2 A 1740 IP	50	75	100	125	150	200

Mueller Ductile Iron Service Saddles with Stainless Steel Straps and I.P. threads

Pipe O. D. Range		Type & Size of Pipe		Single Stainless Steel Strap with I.P. Threads						Double Stainless Steel Strap with I.P. Threads							
Inches	mm	Steel	Cast or Ductile Iron	Base Catalog Number	Size of Tap (add to base number)						Base Catalog Number	Size of Tap (add to base number)					
					1/2"	3/4"	1"	1-1/4"	1-1/2"	2"		1/2"	3/4"	1"	1-1/4"	1-1/2"	2"
2.35 - 2.50	59.7 - 63.5	2"	2**	DR 1 S 0235 IP	50	75	100	-	-	-	DR 2 S 0235 IP	50	75	100	-	-	-
2.85 - 2.91	72.4 - 73.9	2-1/2"	2-1/2"	DR 1 S 0285 IP	50	75	100	-	-	-	DR 2 S 0285 IP	50	75	100	-	-	-
3.56 - 4.00	91.0 - 101.0	3-1/2"	3"	DR 1 S 0356 IP	50	75	100	-	-	-	DR 2 S 0356 IP	50	75	100	-	-	-
4.47 - 5.32	114.3 - 122.0	4"	4"	DR 1 S 0447 IP	50	75	100	125	150	200	DR 2 S 0447 IP	50	75	100	125	150	200
6.59 - 7.37	167.4 - 187.2	6"	6"	DR 1 S 0659 IP	50	75	100	125	150	200	DR 2 S 0659 IP	50	75	100	125	150	200
8.54 - 9.79	216.9 - 248.7	8"	8"	DR 1 S 0854 IP	50	75	100	125	150	200	DR 2 S 0854 IP	50	75	100	125	150	200
10.64 - 12.12	270.3 - 307.8	10"	10"	DR 1 S 1064 IP	50	75	100	-	-	-	DR 2 S 1064 IP	50	75	100	125	150	200
12.62 - 14.38	320.5 - 365.3	12"	12"	DR 1 S 1262 IP	50	75	100	-	-	-	DR 2 S 1262 IP	50	75	100	125	150	200
17.40 - 18.80	442.0 - 477.5	-	16"	-	-	-	-	-	-	-	DR 2 S 1740 IP	50	75	100	125	150	200

*Important -- carefully check the range of the saddle with the O.D. of the pipe being used.
 † These service saddles are suitable for use on pipe meeting the following standards and specifications:
 -Centrifugallycast pipe, classes 50 - 250 ANSI A21.6; ANSI A21.8 and Federal specifications WW-P-421.
 -Pit cast pipe, classes 50 - 250 ANSI A21.2
 -Ductile iron pipe, class 50 - 56 ANSI A21.51. - Steel pipe, ANSI B36.10