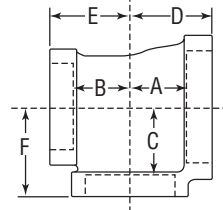


CAST IRON THREADED FITTINGS



Class 125 (Standard)

FIGURE 359
Tee Reducing



Size			A		B		C		D		E		F		Unit Weight						
NPS	DN	NPS	DN	in	mm	in	mm	in	mm	in	mm	in	mm	in	mm	lbs	kg				
1/2	15	1/2	15	1/4	8	1 ¹ / ₁₆	17	1 ¹ / ₁₆	17	1 ³ / ₁₆	22	1 ¹ / ₈	29	1 ¹ / ₈	29	1 ¹ / ₈	29	0.57	0.26		
				3/8	10	1 ¹ / ₁₆	17	1 ¹ / ₁₆	17	3/4	19	1 ¹ / ₈	29	1 ¹ / ₈	29	1 ¹ / ₈	29	0.57	0.26		
				3/4	20	1 ³ / ₁₆	22	1 ³ / ₁₆	22	1 ¹ / ₁₆	17	1 ¹ / ₄	32	1 ¹ / ₄	32	1 ³ / ₁₆	22	0.68	0.31		
				1	25	1	25	1	25	1 ³ / ₁₆	22	1 ⁷ / ₁₆	37	1 ⁷ / ₁₆	37	1 ³ / ₈	35	1.00	0.45		
3/4	20	1/2	15	1/4	8	1 ¹ / ₁₆	17	1 ¹ / ₁₆	17	1 ³ / ₁₆	22	1 ³ / ₁₆	22	1 ¹ / ₈	29	1 ¹ / ₄	32	0.64	0.29		
				3/4	20	1 ³ / ₁₆	22	1 ³ / ₁₆	22	1 ³ / ₁₆	22	1 ⁵ / ₁₆	24	1 ¹ / ₄	32	1 ⁵ / ₁₆	24	0.75	0.34		
		3/4	20	1/4	8	9/16	14	9/16	14	7/8	22	1 ¹ / ₁₆	17	1 ¹ / ₁₆	17	1 ³ / ₁₆	22	0.62	0.28		
				3/8	10	1 ¹ / ₁₆	17	1 ¹ / ₁₆	17	1 ⁵ / ₁₆	24	1 ³ / ₁₆	22	1 ³ / ₁₆	22	1 ¹ / ₄	32	0.75	0.34		
				1/2	15	1 ¹ / ₁₆	17	1 ¹ / ₁₆	17	1 ³ / ₁₆	22	1 ³ / ₁₆	22	1 ³ / ₁₆	22	1 ¹ / ₄	32	0.76	0.34		
1	25	1 ⁵ / ₁₆	24	1 ⁵ / ₁₆	24	1 ³ / ₁₆	22	1 ⁷ / ₁₆	37	1 ⁷ / ₁₆	37	1 ³ / ₈	35	0.99	0.45						
1	25	1/4	8	1	25	1 ⁵ / ₁₆	24	1 ⁵ / ₁₆	24	1 ⁵ / ₁₆	24	1 ¹ / ₂	38	1 ¹ / ₄	32	1 ¹ / ₂	38	1.08	0.49		
				1/2	15	1 ¹ / ₁₆	17	3/4	19	1 ⁵ / ₁₆	24	1 ¹ / ₄	32	1 ³ / ₁₆	22	1 ³ / ₈	35	0.90	0.41		
		1/2	15	3/4	20	1 ³ / ₁₆	22	1 ³ / ₁₆	22	1 ⁵ / ₁₆	24	1 ³ / ₈	35	1 ¹ / ₄	32	1 ⁷ / ₁₆	37	0.91	0.41		
				1	25	1 ⁵ / ₁₆	24	1 ⁵ / ₁₆	24	1 ⁵ / ₁₆	24	1 ¹ / ₂	38	1 ³ / ₈	35	1 ¹ / ₂	38	1.08	0.49		
		3/4	20	1/2	15	1 ¹ / ₁₆	17	1 ¹ / ₁₆	17	1 ⁵ / ₁₆	24	1 ¹ / ₄	32	1 ³ / ₁₆	22	1 ³ / ₈	35	0.89	0.40		
				3/4	20	1 ³ / ₁₆	22	1 ³ / ₁₆	22	1 ⁵ / ₁₆	24	1 ³ / ₈	35	1 ⁵ / ₁₆	24	1 ⁷ / ₁₆	37	1.00	0.45		
		1	25	1	25	1 ⁵ / ₁₆	24	1 ⁵ / ₁₆	24	1 ⁵ / ₁₆	24	1 ¹ / ₂	38	1 ⁷ / ₁₆	37	1 ¹ / ₂	38	1.13	0.51		
						1/4	8	1 ¹ / ₁₆	17	1 ¹ / ₁₆	17	1 ¹ / ₈	29	1 ¹ / ₈	29	1 ¹ / ₄	32	1 ³ / ₈	35	1.01	0.46
						1/2	15	1 ¹ / ₁₆	17	1 ¹ / ₁₆	17	1 ⁵ / ₁₆	24	1 ¹ / ₄	32	1 ¹ / ₄	32	1 ³ / ₈	35	1.01	0.46
						3/4	20	1 ³ / ₁₆	22	1 ³ / ₁₆	22	1 ⁵ / ₁₆	24	1 ³ / ₈	35	1 ³ / ₈	35	1 ⁷ / ₁₆	37	1.11	0.50
1 ¹ / ₄	32					1 ¹ / ₈	29	1 ¹ / ₈	29	1 ⁵ / ₁₆	24	1 ¹¹ / ₁₆	43	1 ¹¹ / ₁₆	43	1 ⁹ / ₁₆	40	1.49	0.68		
1 ¹ / ₂	40	1 ¹ / ₄	32	1 ¹ / ₄	32	1	25	1 ¹³ / ₁₆	47	1 ¹³ / ₁₆	47	1 ⁵ / ₈	41	1.84	0.83						
2	50	1 ⁷ / ₁₆	37	1 ⁷ / ₁₆	37	1	25	2	50	2	50	1 ³ / ₄	44	2.70	1.22						

Note: See page 6 for pressure-temperature ratings.

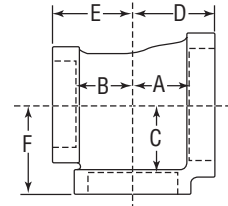
PROJECT INFORMATION		APPROVAL STAMP	
Project:		<input type="checkbox"/> Approved	
Address:		<input type="checkbox"/> Approved as noted	
Contractor:		<input type="checkbox"/> Not approved	
Engineer:		Remarks:	
Submittal Date:			
Notes 1:			
Notes 2:			

CAST IRON THREADED FITTINGS



Class 125 (Standard)

FIGURE 359
Tee Reducing



Size			A		B		C		D		E		F		Unit Weight					
NPS	DN		in	mm	in	mm	in	mm	in	mm	in	mm	in	mm	lbs	kg				
1 1/4	15	1/2	15	1 3/16	22	1 3/16	22	1 1/8	29	1 7/16	37	1 5/16	24	1 5/8	41	1.00	0.45			
		1	25	1 5/16	24	1 5/16	24	1 1/8	29	1 9/16	40	1 3/8	35	1 11/16	43	1.38	0.63			
		1 1/4	32	1 1/8	29	1 1/8	29	1 1/8	29	1 3/4	44	1 9/16	40	1 3/4	44	1.64	0.74			
	20	3/4	20	1 3/16	22	1 3/16	22	1 1/8	29	1 7/16	37	1 5/16	24	1 5/8	41	1.27	0.58			
		1	25	1 5/16	24	1 5/16	24	1 1/8	29	1 9/16	40	1 7/16	37	1 11/16	43	1.43	0.65			
		1 1/4	32	1 1/8	29	1 1/8	29	1 1/8	29	1 3/4	44	1 5/8	41	1 3/4	44	1.73	0.78			
	25	1/2	15	1 1/16	17	1 1/16	17	1 1/8	29	1 5/16	24	1 1/4	32	1 9/16	40	1.27	0.58			
		3/4	20	1 3/16	22	1 3/16	22	1 1/8	29	1 7/16	37	1 3/8	35	1 5/8	41	1.36	0.62			
		1	25	1 5/16	24	1 5/16	24	1 1/8	29	1 9/16	40	1 9/16	40	1 11/16	43	1.53	0.69			
		1 1/4	32	1 1/8	29	1 1/8	29	1 1/8	29	1 3/4	44	1 11/16	43	1 3/4	44	1.79	0.81			
		1 1/2	40	1 1/4	32	1 1/4	32	1 3/16	22	1 7/8	48	1 13/16	47	1 13/16	47	2.07	0.94			
		2	50	1 7/16	37	1 7/16	37	1 3/16	22	2 1/16	52	2	50	1 7/8	48	2.66	1.21			
	32	1/2	15	1 1/16	17	1 1/16	17	1 1/8	29	1 5/16	24	1 5/16	24	1 9/16	40	1.47	0.67			
		3/4	20	1 3/16	22	1 3/16	22	1 1/8	29	1 7/16	37	1 7/16	37	1 5/8	41	1.57	0.71			
		1	25	1 5/16	24	1 5/16	24	1 1/8	29	1 9/16	40	1 9/16	40	1 11/16	43	1.73	0.78			
		1 1/2	40	1 1/4	32	1 1/4	32	1 3/16	22	1 7/8	48	1 7/8	48	1 13/16	47	2.29	1.04			
		2	50	1 7/16	37	1 7/16	37	1 3/16	22	2 1/16	52	2 1/16	52	1 7/8	48	2.81	1.27			
		1 1/2	15	1 1/4	32	1 3/16	22	1 1/8	29	1 1/4	32	1 13/16	47	1 9/16	40	1 7/8	48	1.93	0.88	
	1 1/2			40	1 5/16	24	1 1/4	32	1 5/16	24	1 15/16	49	1 11/16	43	1 15/16	49	2.14	0.97		
	20		3/4	20	1 1/2	40	1 5/16	24	1 1/4	32	1 5/16	24	1 15/16	49	1 3/4	44	1 15/16	49	2.18	0.99
			1/2	15	1 3/16	22	3/4	19	1 1/4	32	1 7/16	37	1 5/16	24	1 11/16	43	1.75	0.79		
			3/4	20	7/8	22	1 3/16	22	1 1/4	32	1 1/2	38	1 3/8	35	1 3/4	44	1.70	0.77		
			1	25	1	25	1 5/16	24	1 1/4	32	1 5/8	41	1 1/2	38	1 13/16	47	1.72	0.78		
			1 1/4	32	1 3/16	22	1 1/8	29	1 1/4	32	1 13/16	47	1 11/16	43	1 7/8	48	2.08	0.94		
1 1/2			40	1 5/16	24	1 1/4	32	1 5/16	24	1 15/16	49	1 13/16	47	1 15/16	49	2.29	1.04			
25	2		50	1 1/2	38	1 7/16	37	1 5/16	24	2 1/8	54	2	50	2	51	2.91	1.32			
	32		1/2	15	1 3/16	22	1 1/16	17	1 1/4	32	1 7/16	37	1 5/16	24	1 11/16	43	1.67	0.76		
			3/4	20	7/8	22	1 3/16	22	1 1/4	32	1 1/2	38	1 7/16	37	1 3/4	44	1.79	0.81		
			1	25	1	25	1 5/16	24	1 1/4	32	1 5/8	41	1 9/16	40	1 13/16	47	1.97	0.89		
			1 1/4	32	1 3/16	22	1 1/8	29	1 1/4	32	1 13/16	47	1 3/4	44	1 7/8	48	2.28	1.03		
			1 1/2	40	1 5/16	24	1 1/4	32	1 5/16	24	1 15/16	49	1 7/8	48	1 15/16	49	2.50	1.13		
2			50	1 1/2	38	1 7/16	37	1 5/16	24	2 1/8	54	2 1/16	52	2	51	3.07	1.39			
40	1 1/2		1/2	15	1 3/16	22	1 3/16	22	1 1/4	32	1 7/16	37	1 7/16	37	1 11/16	43	1.84	0.83		
			3/4	20	7/8	22	7/8	22	1 1/4	32	1 1/2	38	1 1/2	38	1 3/4	44	1.95	0.88		
			1	25	1	25	1	25	1 1/4	32	1 5/8	41	1 5/8	41	1 13/16	47	2.13	0.97		
			1 1/4	32	1 3/16	22	1 3/16	22	1 1/4	32	1 13/16	47	1 13/16	47	1 7/8	48	2.44	1.11		
			2	50	1 1/2	38	1 1/2	38	1 5/16	24	2 1/8	54	2 1/8	54	2	51	3.23	1.46		
			2 1/2	65	1 13/16	47	1 13/16	47	1 5/16	24	2 7/16	62	2 7/16	62	2 3/16	56	4.15	1.88		

Note: See page 6 for pressure-temperature ratings.