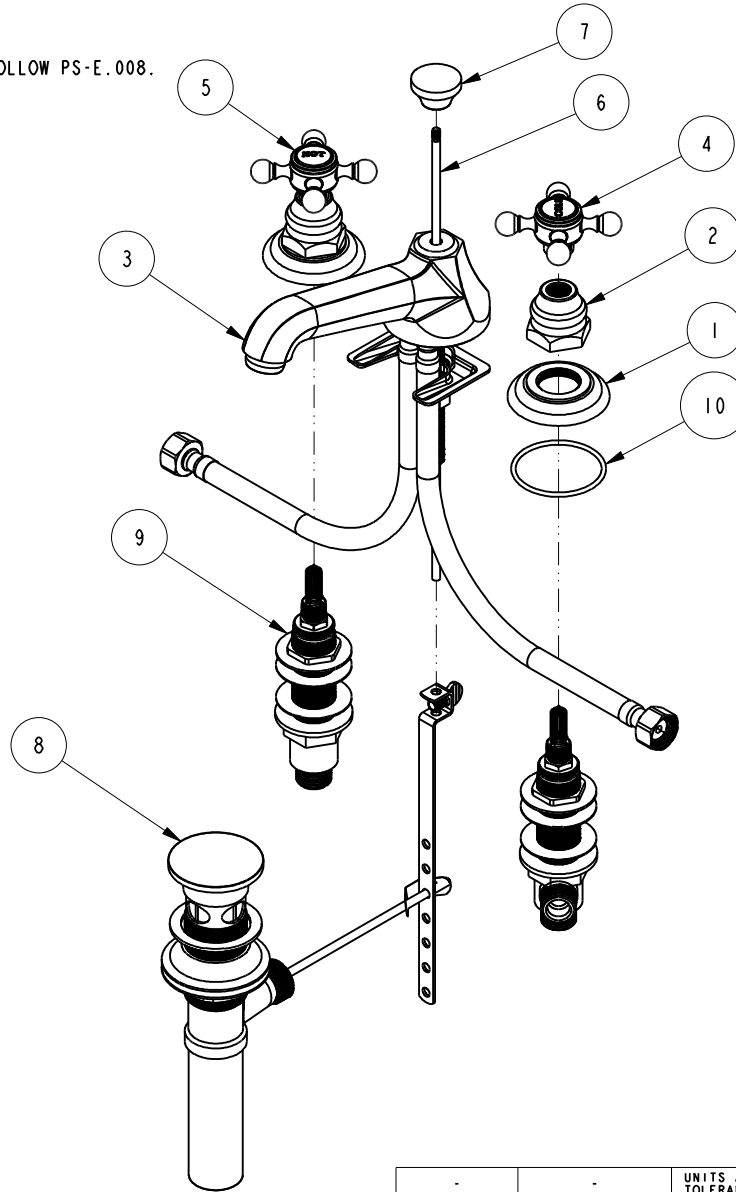
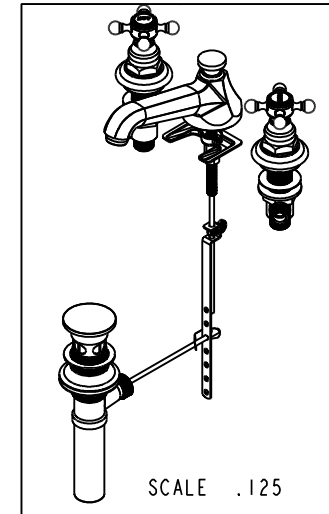


NOTES:
 (N1) I. FIT / FORM / FUNCTION SHALL FOLLOW PS-E.008.



BILL OF MATERIAL (CURRENT LEVEL)

ITEM	PT/ASSY	DESCRIPTION	TYPE	QTY.
1	10048	ESCUTCHEON W/S VALVE	PART	2
2	10523	HEX ESCUTCHEON BONNET	PART	2
3	3-346	ASSY, SPOUT	ASSEMBLY	1
4	2-142	HANDLE ONLY, COLD	ASSEMBLY	1
5	2-141	HANDLE ONLY, HOT	ASSEMBLY	1
6	10288	3/16" POP UP ROD	PART	1
7	10961	SMOOTH POP - UP KNOB	PART	1
8	325	POP UP ASSEMBLY	ASSEMBLY	1
9	1-525.920	W/S VALVE ASM	ASSEMBLY	1
10	91231	O-RING, #2-136, EPDM, 65-75 DURO	PART	2



-	E	EN-3371	08/04/17	J.M
-	D	EN-2334	12/18/12	-
-	C	EN-1616	09/13/10	-
-	B	EO-1015	06/10/08	-
-	A	EO-0818	03/30/07	-
ZONE	REV	DESCRIPTION	DATE	APPROVED

COPYRIGHT 2005 BRASSTECH, INC.
 THESE DRAWINGS AND THE DESIGNS
 DEPICTED HEREIN ARE THE PROPRIETARY
 PROPERTY OF BRASSTECH. ANY USE
 OR REPRODUCTION IS SUBJECT TO
 THE EXPRESS APPROVAL OF BRASSTECH.
 UNAUTHORIZED USE IS STRICTLY
 PROHIBITED. ALL RIGHTS RESERVED.

TESTING	-	-	-
ASSEMBLY	-	-	-
PLATING	-	-	-
POLISHING	-	NEXT ASSY	USED ON
MACHINING	-	APPLICATION	
TOOLING FIXTURE #	REMOVE ALL BURRS AND SHARP EDGES		

UNITS ARE: INCHES [MM]
 TOLERANCES ARE:
 FRACTIONS DECIMALS ANGLES
 ±1/16" .X ±.1 [2,5] ±1°
 .XX ±.06 [1,3]

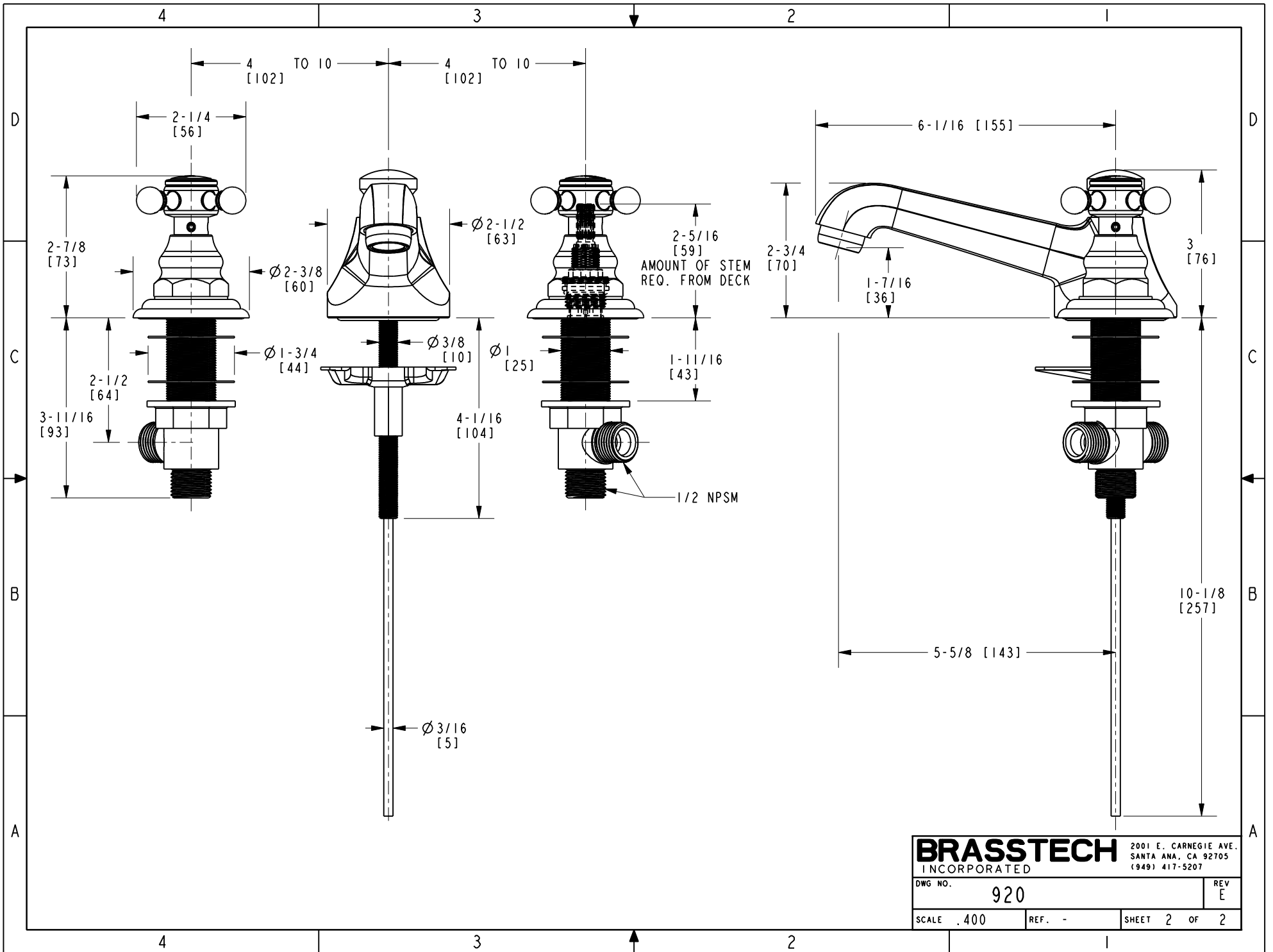
(X.XXX) DENOTES CRITICAL DIMS.
 ALL THREADS ARE CRITICAL

DRAWN	VINAY	08/04/17
CHECKED	RAVINDRA	08/04/17
APPROVED	J.M	08/04/17

BRASSTECH INCORPORATED
 2001 CARNEGIE AVE.
 SANTA ANA, CA 92705
 (949) 417-5207

**TOP ASSY, FAUCET,
 WIDESPREAD**

DWG NO.	920	REV	E
SCALE	.225	REF.	-
SHEET	1	OF	2



BRASSTECH 2001 E. CARNEGIE AVE.
 INCORPORATED SANTA ANA, CA 92705
 (949) 417-5207

DWG NO.	920	REV	E
SCALE	.400	REF.	-
SHEET 2		OF 2	