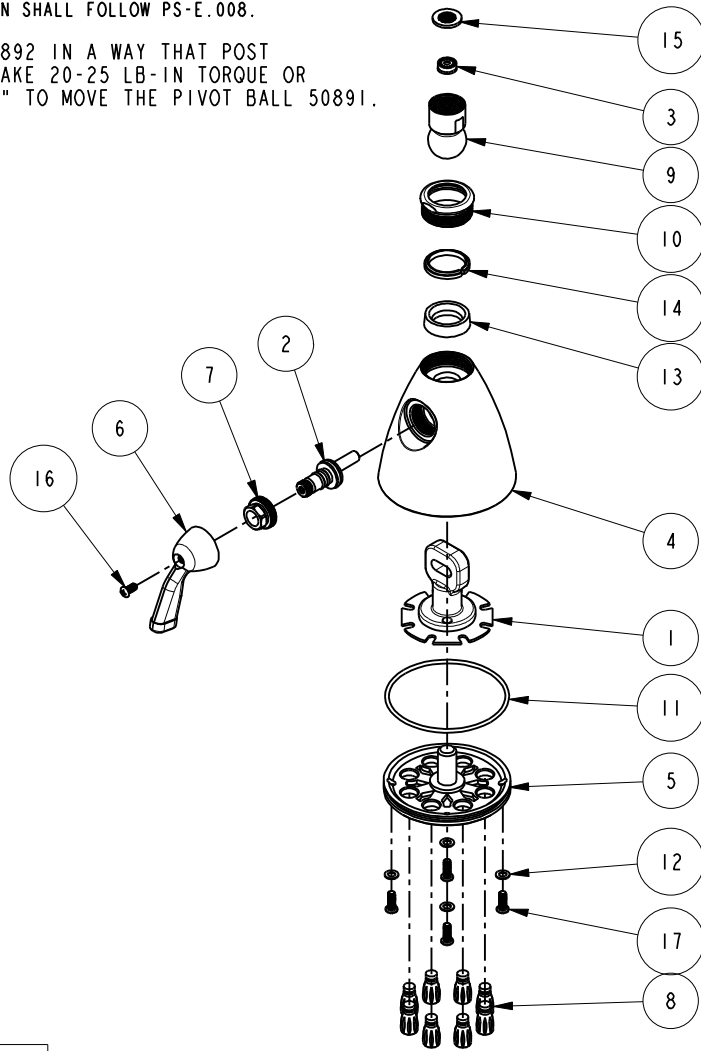


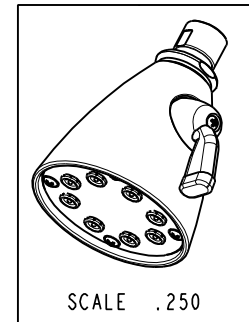
NOTES:

- (N1) 1. FIT / FORM / FUNCTION SHALL FOLLOW PS-E.008.
- (N2) 2. TIGHTEN THE NUT 50892 IN A WAY THAT POST ASSEMBLY IT WILL TAKE 20-25 LB-IN TORQUE OR 2-3 LBS FORCE AT 7" TO MOVE THE PIVOT BALL 50891.



BILL OF MATERIAL (CURRENT LEVEL)

ITEM	PT/ASSY	DESCRIPTION	TYPE	QTY.
1	5-001	SPRAY TIP MTG PLATE	ASSEMBLY	1
2	5-037	STEM ASM	ASSEMBLY	1
3	12833	FLOW REGULATOR, 1.8 GPM MAX	PART	1
4	50156	BODY SHWR HEAD	PART	1
5	50157	FACE PLATE	PART	1
6	50158	HANDLE LEVER	PART	1
7	50159	PACKING NUT	PART	1
8	50163	SPRAY TIP	PART	8
9	50891	PIVOT BALL	PART	1
10	50892	COLLAR NUT	PART	1
11	91074	O-RING, 2.5 X 77MM ID, EPDM, 65-75 DURO	PART	1
12	91147	WSHR, .20 ID X .36 OD X .03 THK, RUBBER	PART	4
13	91152	WSHR, .801 ID X 1.196 OD X .32 THK, CONCAVE PB	PART	1
14	91523	BEARING RING, PLASTIC	PART	1
15	91606	GASKET W/ FILTER SCREEN	PART	1
16	92039	SCRW, 10-24 X 7/16 PHIL OVL HD BRASS	PART	1
17	92040	SCRW, 10-24 X 1/2 PHIL W/.320 DIA ROUND HD BRS	PART	4



-	G	EN-3999	10/17/19	C.G.
-	F	EN-3825	03/11/19	V.V.
-	E	EN-3410	12/28/17	C.G.
-	D	EN-1924	12/02/11	-
-	C	EN-1668C	05/20/11	-
-	B	EO-0518	06/09/05	-
-	A	VENDER CHANGE	06/00	-
-	-	RELEASED	PRE '95	-
ZONE	REV	DESCRIPTION	DATE	APPROVED

COPYRIGHT 2005 BRASSTECH, INC. THESE DRAWINGS AND THE DESIGNS DEPICTED HEREIN ARE THE PROPRIETARY PROPERTY OF BRASSTECH. ANY USE OR REPRODUCTION IS SUBJECT TO THE EXPRESS APPROVAL OF BRASSTECH. UNAUTHORIZED USE IS STRICTLY PROHIBITED. ALL RIGHTS RESERVED.

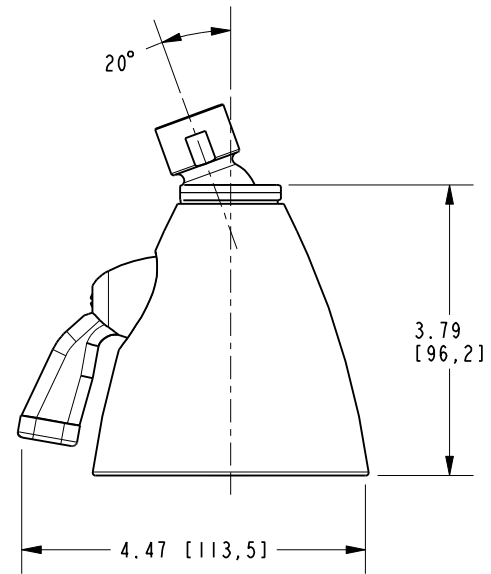
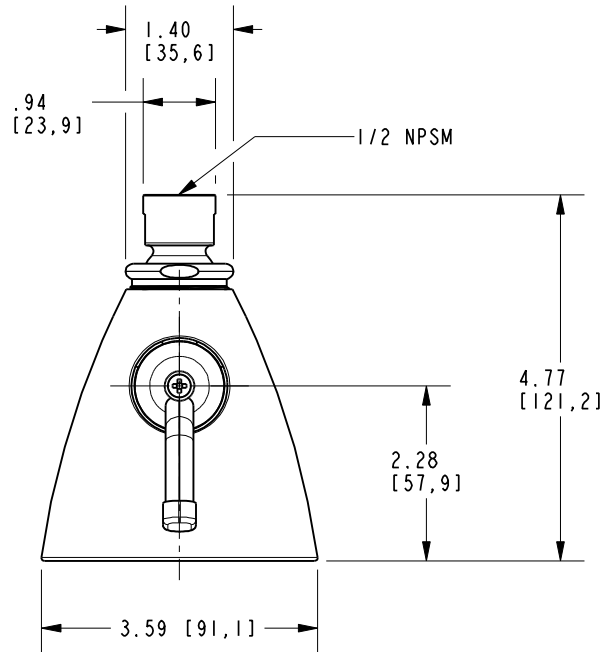
TESTING	-	-	-
ASSEMBLY	-	-	-
PLATING	-	-	-
POLISHING	-	NEXT ASSY	USED ON
MACHINING	-	APPLICATION	
TOOLING FIXTURE #	REMOVE ALL BURRS AND SHARP EDGES		

UNITS ARE: INCHES [MM]		
TOLERANCES ARE:		
FRACTIONS	DECIMALS	ANGLES
±1/16"	.X ±.1 [2.5]	±1°
	.XX ±.06 [1.5]	
(X.XXX) DENOTES CRITICAL DIMS. ALL THREADS ARE CRITICAL		
DRAWN	JINSON	10/17/19
CHECKED	C.G.	10/17/19
APPROVED	C.G.	10/17/19

BRASSTECH		2001 CARNEGIE AVE. SANTA ANA, CA 92705 (949) 417-5207	
INCORPORATED			
LG SHWRHEAD 3-1/2"			
DWG NO.	211	REV	G
SCALE	.200	REF.	-
SHEET	1	OF	2

NOTES:

1. FLOW RATE 2.5 GPM MAX



BRASSTECH		2001 E. CARNEGIE AVE. SANTA ANA, CA 92705 (949) 417-5207	
DWG NO.	211	REV	G
SCALE	.500	REF.	-
		SHEET	2 OF 2