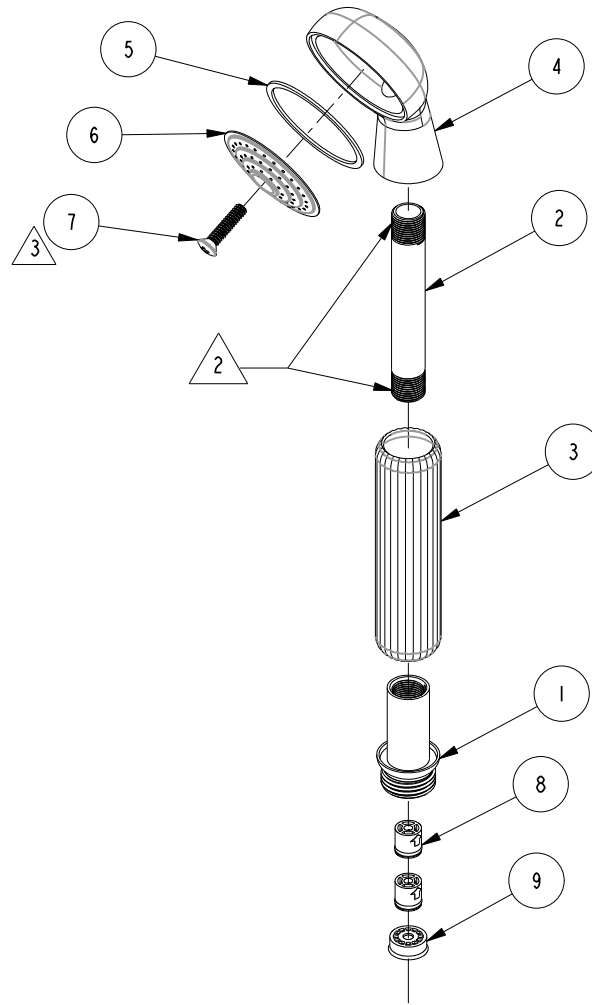


NOTES:

(N1) 1. FIT / FORM / FUNCTION SHALL FOLLOW PS-E.008.

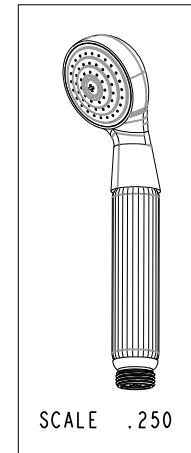
2. APPLY ADHESIVE LOCTITE 680.

3. APPLY TORQUE 4-6 LB-IN.



BILL OF MATERIAL (CURRENT LEVEL)

ITEM	PT/ASSY	DESCRIPTION	TYPE	QTY.
1	50906	ADAPTER HOSE	PART	1
2	50907	NIPPLE FOR HAND SHOWER	PART	1
3	50277	GROOVED HANDLE	PART	1
4	50275	BODY	PART	1
5	91173	WSHR, 1.64 ID X 1.84 OD X .042 THK, FLT, RUBBER	PART	1
6	50276	FACEPLATE (HND SHWR)	PART	1
7	92253	SCRW, 10-24 X .830 PHIL FLT HD BRASS	PART	1
8	5-050	CHECK VALVE, NEOPERL DW10, WHITE	PART	2
9	12832	FLOW REGULATOR, 1.8 GPM MAX	PART	1



TESTING	-	-	-
ASSEMBLY	-	-	-
PLATING	-	-	-
POLISHING	-	NEXT ASSY	USED ON
MACHINING	-	APPLICATION	
TOOLING FIXTURE #		REMOVE ALL BURRS AND SHARP EDGES	

**BRASSTECH** 2001 CARNEGIE AVE.  
INCORPORATED SANTA ANA, CA 92705  
(949) 417-5207

**HAND SHOWER WITH GROOVE**

DWG NO. **280** REV **E**

SCALE .350 REF. - SHEET 1 OF 2

ZONE	REV	DESCRIPTION	DATE	APPROVED
-	E	EN-3918	07/17/19	C.G.
-	D	EN-3410	01/01/18	C.G.
-	C	EN-1668	07/07/11	-
-	B	EO-0869	08/15/07	-

COPYRIGHT 2005 BRASSTECH, INC. THESE DRAWINGS AND THE DESIGNS DEPICTED HEREIN ARE THE PROPRIETARY PROPERTY OF BRASSTECH. ANY USE OR REPRODUCTION IS SUBJECT TO THE EXPRESS APPROVAL OF BRASSTECH. UNAUTHORIZED USE IS STRICTLY PROHIBITED. ALL RIGHTS RESERVED.

