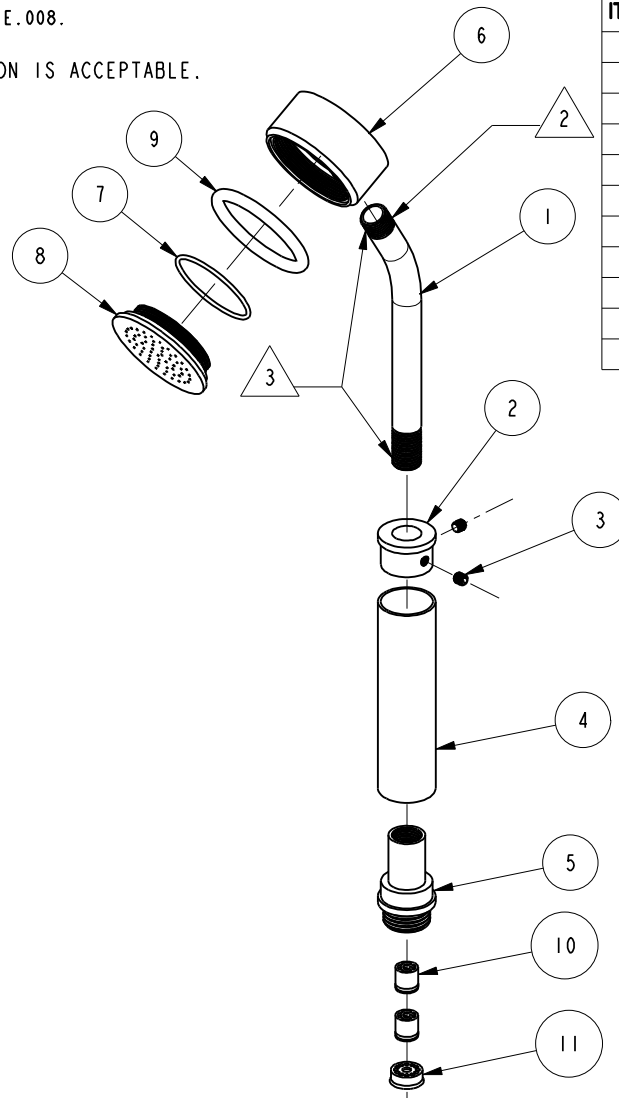


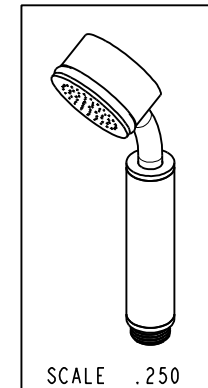
NOTES:

- (N1) 1. FIT / FORM / FUNCTION SHALL FOLLOW PS-E.008.
- 2. ONE EXPOSED THREAD AT THIS LOCATION IS ACCEPTABLE.
- 3. APPLY LOCTITE 680.



BILL OF MATERIAL (CURRENT LEVEL)

| ITEM | PT/ASSY | DESCRIPTION | TYPE | QTY. |
|------|---------|---|------|------|
| 1 | 50914 | TUBE STEM | PART | 1 |
| 2 | 50487 | HANDLE STOP | PART | 1 |
| 3 | 92004 | SCRW, 10-32 X 3/16 SKT HD FLT PT SS | PART | 2 |
| 4 | 50489 | HANDLE SLEEVE | PART | 1 |
| 5 | 50913 | END NUT | PART | 1 |
| 6 | 50485 | BODY | PART | 1 |
| 7 | 91159 | O-RING, #2-029, EPDM, 65-75 DURO, NSF 6 I | PART | 1 |
| 8 | 50488 | FACEPLATE | PART | 1 |
| 9 | 91233 | O-RING, #2-328, EPDM, 65-75 DURO | PART | 1 |
| 10 | 5-050 | CHECK VALVE, NEOPERL DW10, WHITE | PART | 2 |
| 11 | 12832 | FLOW REGULATOR, 1.8 GPM MAX | PART | 1 |



UNITS ARE: INCHES [MM]
 TOLERANCES ARE:
 FRACTIONS DECIMALS ANGLES
 $\pm 1/16"$.X $\pm .1$ [2.5] $\pm 1^\circ$
 .XX $\pm .06$ [1.5]

(X.XXX) DENOTES CRITICAL DIMS.
 ALL THREADS ARE CRITICAL

DRAWN JINSON 01/01/18
 CHECKED C.G. 01/01/18
 APPROVED C.G. 01/01/18

BRASSTECH 2001 CARNEGIE AVE.
 INCORPORATED SANTA ANA, CA 92705
 (949) 417-5207

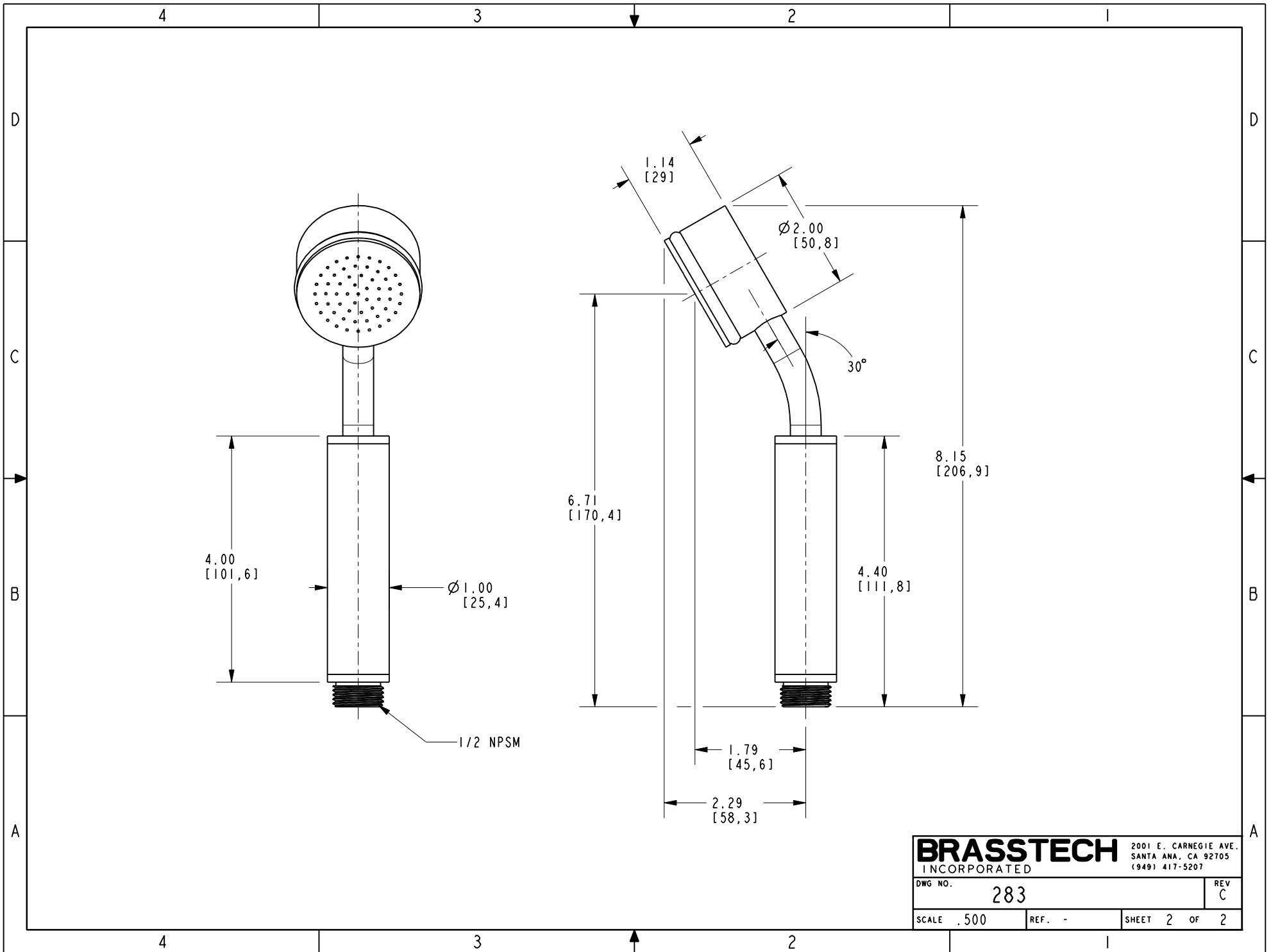
HAND SHOWER

DWG NO. 283 REV C
 SCALE .300 REF. - SHEET 1 OF 2

| ZONE | REV | DESCRIPTION | DATE | APPROVED |
|------|-----|-------------|----------|----------|
| - | C | EN-3410 | 01/01/18 | C.G. |
| - | B | EN-2709 | 02/26/14 | - |
| - | A | EN-1668 | 07/07/11 | - |
| - | - | RELEASED | 12/99 | - |

COPYRIGHT 2005 BRASSTECH, INC.
 THESE DRAWINGS AND THE DESIGNS
 DEPICTED HEREIN ARE THE PROPRIETARY
 PROPERTY OF BRASSTECH. ANY USE
 OR REPRODUCTION IS SUBJECT TO
 THE EXPRESS APPROVAL OF BRASSTECH.
 UNAUTHORIZED USE IS STRICTLY
 PROHIBITED. ALL RIGHTS RESERVED.

| TESTING | ASSEMBLY | PLATING | POLISHING | MACHINING | TOOLING FIXTURE # | APPLICATION |
|---------|----------|---------|-----------|-----------|-------------------|----------------------------------|
| - | - | - | - | - | - | REMOVE ALL BURRS AND SHARP EDGES |



| | | | |
|------------------|--------|-----------------------|--|
| BRASSTECH | | 2001 E. CARNEGIE AVE. | |
| INCORPORATED | | SANTA ANA, CA 92705 | |
| DWG NO. 283 | | REV C | |
| SCALE .500 | REF. - | SHEET 2 OF 2 | |